

Hatteras 34



A *Blue Water Beauty* WITH SPEED TO SPARE



Step aboard the Hatteras-34 and keep an appointment with pleasure. This snappy Sport Cruiser was the first production-built cruiser in the 34-foot class, and it's making a big splash with sportsmen who demand a boat that's easy to handle. She's dry! She's fast! And thanks to her all fiberglass hull, topsides and component parts, maintenance cost is less.

This sleek beauty can scamper through water at speeds expert skiers would love; or cruise smoothly (with twin engines) at speeds of over 35 miles an hour. The spacious uncluttered cockpit gives you room to walk around or to enjoy sociable loafing. And for fishing, there is room for two or more . . . plenty of room for a fighting chair for deep sea angling.

Fiberglass, the strongest material pound for pound available, gives this boat exceptional safety features



and greater off-shore performance . . . allows a new and highly efficient hull design not possible with the standard, less workable materials. Because the hull and superstructure are each molded in one piece, bulky beams and frames are eliminated . . . there is more room inside.

you have an Appointment with Pleasure

Every detail, every option of the Hatteras-34 was designed for your pleasure afloat! Has ample head-room . . . Lounge converts into comfortable upper and lower berths. Dinette converts handily to sleep two. Mattresses are polyfoam.



Floors are covered with easy-to-clean vinyl; windows are weather-proof safety glass.

All of this because the Hatteras-34 is production-built, is com-

petitively priced . . . allowing you to enjoy your "appointment with pleasure," on the most modern 34-footer afloat, for what you'd expect to pay for a lesser boat.



Optional arrangement for deck house under plan A, when dinette is eliminated

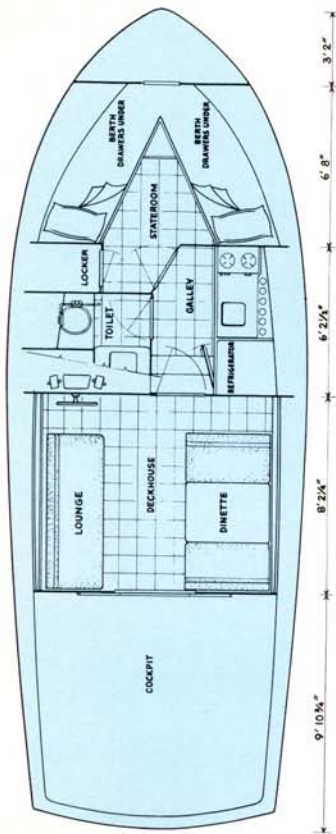
The new Hatteras-34 galley is kitchen-gearred for sea-going meals. So complete in every detail, there's even a full 10 foot electric refrigerator . . . an electric stove . . . two 110-volt outlets, stainless steel sink with hot and cold running water . . . dish and glass racks and space galore in three drawers, storage cabinet, and even beneath steps to deck house.



The Master Stateroom is forward . . . offers both privacy and comfort . . . has two bunks with poly-foam mattresses . . . spacious drawers and large storage space under each bunk . . . also full length locker. The modern decor has distinguished appearance. All available space has been put to a useful purpose.

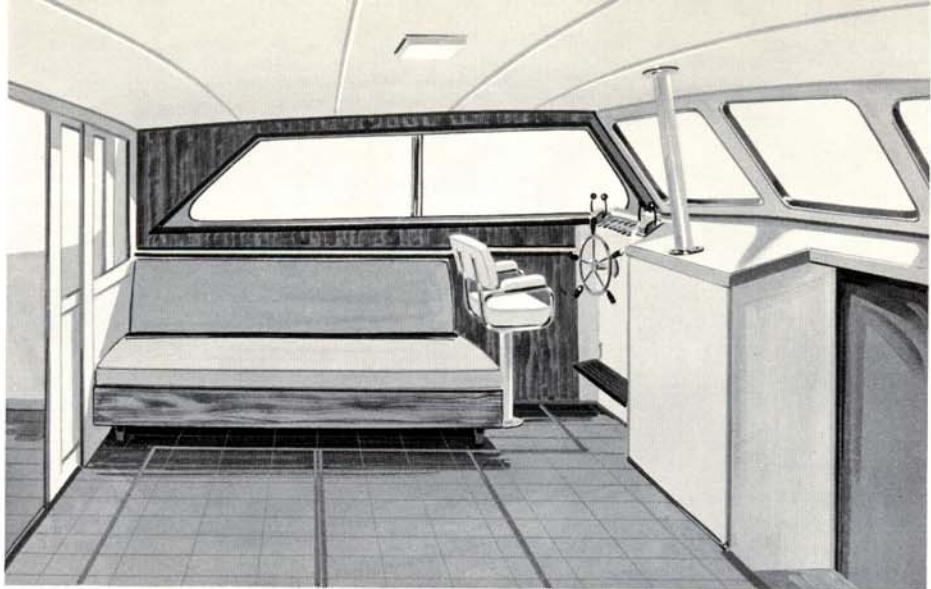
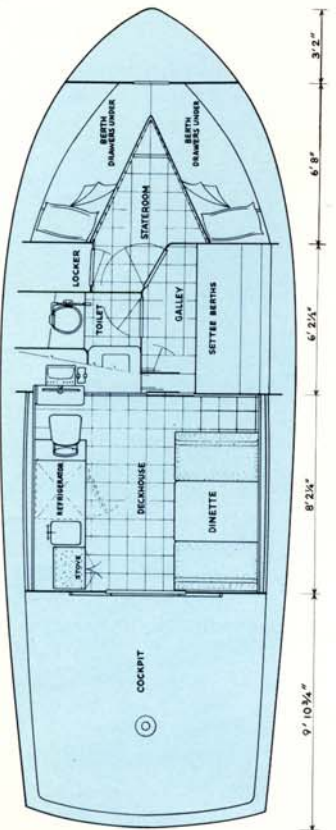
Now available in the head on the Hatteras-34 is a full size shower with hot and cold running water. The washbasin has a storage cabinet beneath. Medicine cabinet with mirror and ample lighting. Two 110-volt outlets . . . Electric toilet optional. Large size hanging locker.



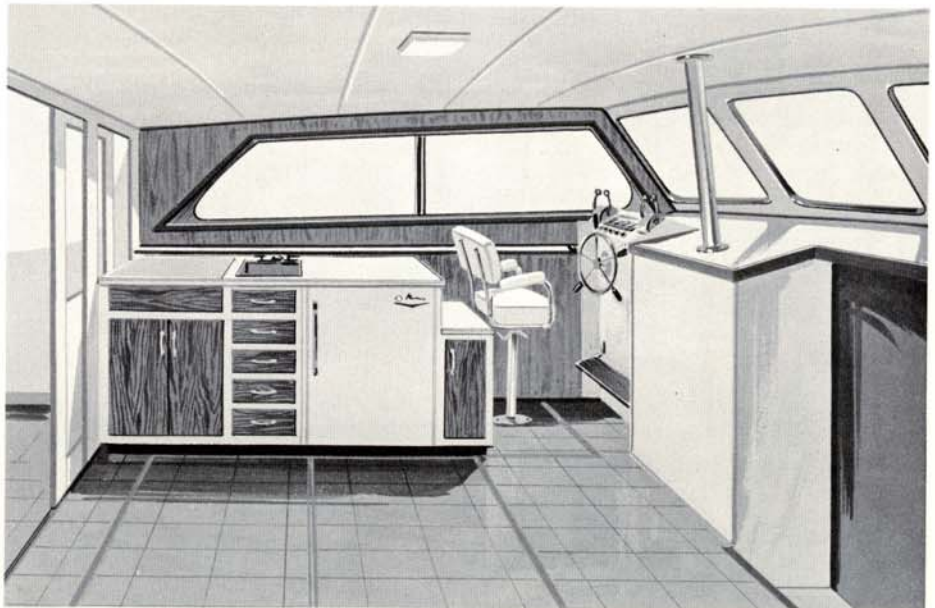


Plan A (Standard) floor plan shows galley amidship. Lower controls (optional) are now in off-center position to port side.

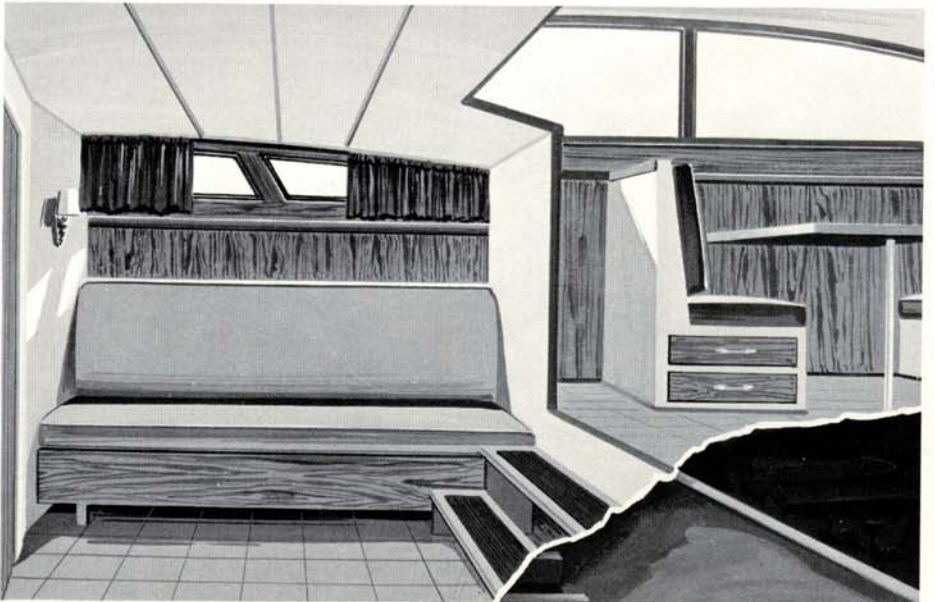
Plan B (optional) shows galley in deck house on port side.



From A plan (Standard) sketch shows new port position of optional lower controls.



From B plan, sketch shows galley moved to deckhouse.



From B plan, sketch shows lounge amidship. Lounge converts to upper and lower berths for sleeping.