

Hatteras

40 DOUBLE CABIN



Your personal invitation to join a very exclusive club.

If you take pleasure in the finer things of life, if for your family the good life is the only life, welcome to an unusual offering from Hatteras.

Unusual not because the 40 Double Cabin is different from our standards and traditions, but because this family cruiser is so typically Hatteras throughout . . . and at the same time, surprisingly affordable.

Here in forty feet is a lot of room, a lot of luxury, a lot of individual privacy. In short, a lot of Hatteras, for a lot of boating enjoyment.

A Word For Those New To Hatteras.

If you already own one of our boats (even if you've simply spent a great deal of time on one), then please feel free to skip the next four paragraphs; you know what is meant by "typically Hatteras." But if your best impressions of our motor yachts or sportfishing machines have come from a distance, then please stay right here: an understanding of the

tradition behind "typically Hatteras" is everything in understanding any one of our boats.

In a sense, Hatteras is a very traditional boatbuilder. Despite a history of innovations, our underlying principles of boatbuilding have not changed since we began in 1959. Willis Slane's original 41-foot all-fiberglass hull yacht, "Knit-Wits," was built around the same principles as this boat: a Hatteras must serve *two* masters — its owner and the open sea. Anything which compromises our abilities to serve either is simply not acceptable, simply not "typically Hatteras."

As a result, we've earned a reputation for making boats and yachts which are considered exceptionally engineered, and perhaps a bit "lavish." Actually we consider neither the sea nor a long-term Hatteras owner to be forgiving. Reliability and comfort are our abiding goals.

So while our models are constantly being refined and improved, while the latest proven technologies in naval archi-



ecture and engineering are forever being integrated into new Hatteras designs, every yacht we make is a remarkably well-made craft. Well-made today, well-made many years from today.

Every yacht we make is "typically Hatteras."

Aboard The 40 Double Cabin.

Once aboard the Hatteras 40 Double Cabin, you'll discover this quality firsthand. A beautiful combination of livability, reliability, and performance. She's designed for the family that loves boating, or anyone who enjoys social pleasures.

The 40 Double Cabin will be equally at home on the lakes, sounds, rivers, and coastal waters of the world. Her Hatteras all-fiberglass hull is well-conceived from stem to stern: bottom lines sharp at the forefoot for a soft entry, running strakes forward for effective lift and flattened chines for added stability. The graceful

flare of the bow helps to provide a dryer ride, while maximizing interior forward space.

And, of course, her hull is typically Hatteras. With full-length fiberglass stringers and athwartship stiffeners to provide peace of mind.

Aboard, feature after feature will capture the fancy of any family boater seeking something not simply newer or different, but something truly better than what is typical of this class.



Here's livability measured by the highest standards. A lot of room. A lot of luxuries. A lot of Hatteras.

We're going to tease you a moment longer. Before we step aboard, take a good long look at the long, low look of this Hatteras. As you can see on this and the previous pages, the profile of this double cabin design is amazingly sleek and low.

A bit rakish through the stem line, her profile is accentuated by sheerline striping, and the sleek and functional dodger board of the aft deck. The overall height of the aft deck and the long aft cabin windows make her lines appear low to the water.

So what are we waiting for?

Here on deck of the 40 Double Cabin is a wealth of space — more than any other boat in her class. The side decks are protected by stainless steel rails, providing ample clearance for easy boarding and movement along the deck.

The bridge itself, just a few steps up from the aft deck, provides plenty of visibility for the skipper. The helm console is complete with all necessary gauges and indicators. And an optional radar arch can be included.



The aft deck is roomy, and features an optional hardtop that ties neatly to the arch. And, when equipped with the optional deck bar including sink, glass and bottle racks, this is the ideal setting for an afternoon of relaxation, or an evening entertaining in the marina. When the evening chill descends, the salon invites you in. From the aft deck, a door and hatch make entering the cabin very, very easy.

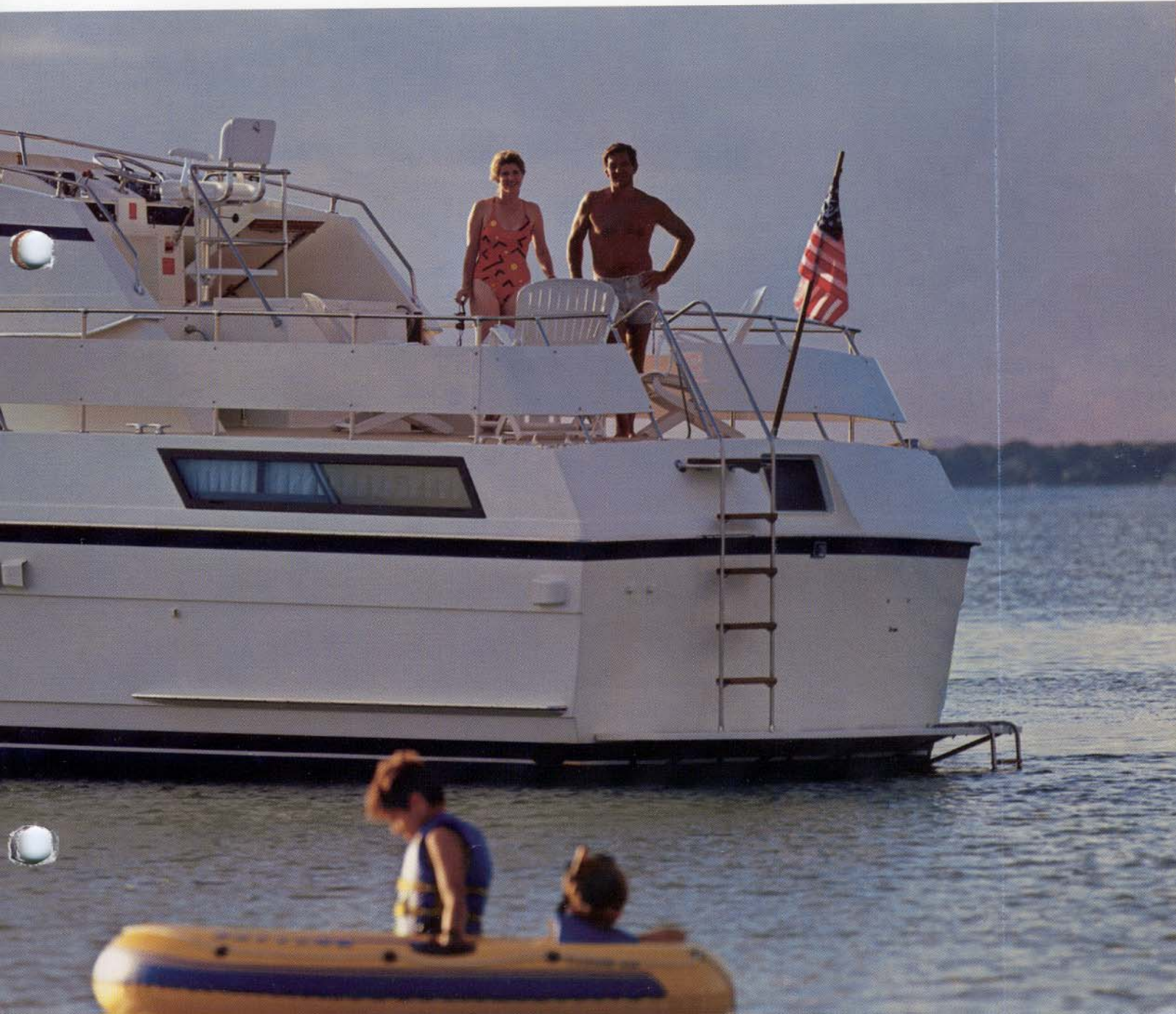
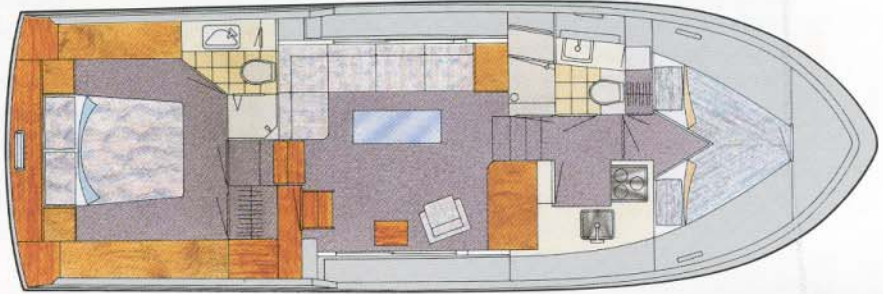
The salon is luxurious: the 40 Double Cabin includes a furnished salon as standard equipment. That includes an L-shaped sofa with built-in sleeper. Includes two Parsons stools set at the adjoining galley counter. Includes the high-low table, and the oh-so-comfortable swivel chair. These are standard furnishings made to complete a home-like setting.

There's also a lot of storage space. For example, the salon's port corner features a storage cabinet with locker that conveniently serves as an end table for the sofa, and as the ideal location for the optional icemaker.

The galley is open to the salon, and clearly superior to anything you may have already seen in this class of boat. Take note of the special skill of the Hatteras design team here: the 40 Double Cabin galley has all the right spaces in all the right places. A lot of work space. A lot of storage room. A lot of cabinetry. There's even room for a microwave if you choose.

Perhaps by now, you've seen much more than you thought possible in a boat this size. But stay with us, because there's much more to come.

The fore and aft staterooms, with all their amenities, await.



Its functional design includes a place for the most important need of all: privacy.

The bow stateroom of the Hatteras 40 Double Cabin makes a surprising statement. Here are the luxuries, the room, the little extras you'd usually find only in some other boat's master stateroom. Here are unusually comfortable accommodations for your guests or children.

With generous 6'6" of berth length, this guest stateroom offers room to move around, and room for plenty of storage. Under the vee berths there are four full-size drawers, and also a full-size hanging locker.

Among the many little extra touches you'll find a full length mirror behind the door, an automatic light in the hanging locker, and attractive bedspreads and pillow shams . . . all standard. An opening hatch provides good light and ventilation.

But perhaps the most surprising extra to the bow stateroom is its own head. Complete with stall shower, exhaust fan, lots of space for linen and toiletry storage, and ground fault protected receptacles, this head greatly adds to the overall sense of your well-deserved privacy aboard.

Now let's move aft to the master stateroom. Suddenly, the 40 Double Cabin seems much larger, for here is a stateroom typical of some of the world's more elegant motor yachts. You'll *know* you're the owner of a Hatteras.

Your stateroom features a tapered queen-size bed, with room enough to move around it. There are home-size drawers here — 11 in all, plus two more in the bedside nightstands. And there's a spacious hanging locker as well.

And be sure to notice the finishing touches on the bulk-



heads. They are not covered in vinyl or carpet as you'd find in other boats in this class; they are made with rare wood veneers, just the same way as we finish the bulkheads in other Hatteras motor yachts.

Finally, the engine room of the 40 Double Cabin is laid out for serviceability and convenience. Even when optional air conditioning equipment is included, the layout remains open and accessible.

Power selection includes a choice of diesel or gas engines. In addition, a matching generator can be specified to provide full electric power for your needs away from the dock.

An automatic Halon fire extinguisher system, complete electrical bonding, and bronze sea strainers and thru-hull fittings are among the many Hatteras differences you'll find aboard the 40 Double Cabin.

But this is a Hatteras, after all. One more boat in our full line, one more reason why Hatteras is considered among the best yacht and boatbuilders in the world. You owe it to your-

self to check out the 40 Double Cabin firsthand.

Your opportunity to join a very exclusive club, your chance to own a Hatteras, is much closer than you may have ever thought possible.

As close now, in fact, as your nearest Hatteras dealer.

Main Photo Below: Enter a world of your own here in the master stateroom, with such comfortable accommodations as a tapered queen-size bed, port and starboard sliding windows, and a lot of cabinet and drawer storage space.

Top Photos from Left: The galley, with its built-in refrigerator/freezer and full range with oven, is open to the salon area and boasts overhead windows for a spacious, airy effect.

Aft, the master head with stall shower is well-designed and roomy.

Bottom Photos from Left: The bow stateroom is outfitted with large vee-berths and drawer and hanging locker space.

The guest head, adjacent to the bow stateroom, includes a stall shower, linen locker, and medicine cabinet.

The master stateroom is a masterpiece of workmanship and design, here revealing its private entrance to the master head.



Hatteras Yachts
2100 Kivett Drive
P.O. Box 2690
High Point, North Carolina 27261 U.S.A.
Telephone: (919) 889-6621

Hatteras Yachts reserves the right to make styling, design, equipment and construction changes without notice. Some items shown may be optional.
Hatteras is a registered trademark of Genmar Industries, Inc. © 1987 Hatteras Yachts, Division Genmar Industries, Inc.

40DC 20 187
Printed in U.S.A.

