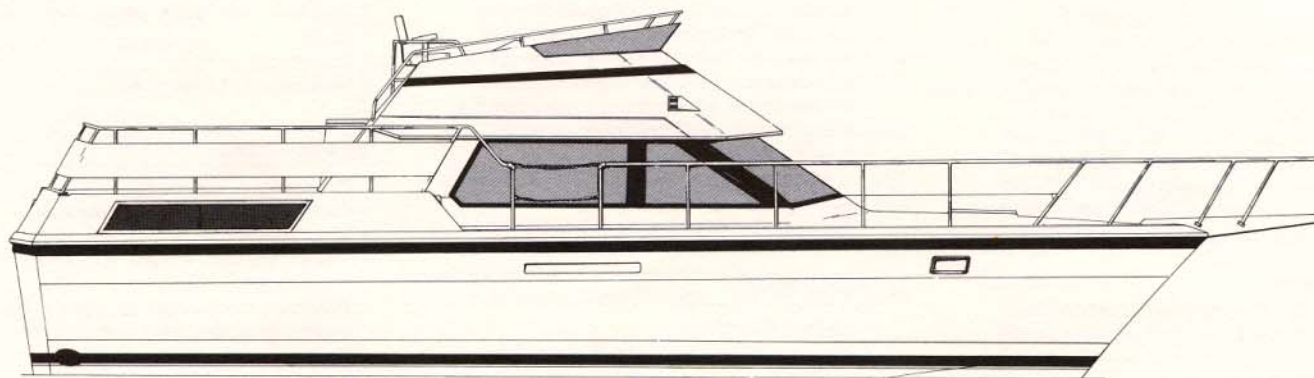


Hatteras

40 DOUBLE CABIN



40 DOUBLE CABIN^(A) Specifications

Length Overall	40'10"	12.44 m	Weight Displacement ^(B)	30,000 Lbs	13,620 kg
Beam	13'7"	4.14 m	Overhead Obstruction Clearance Required To Top of Flying Bridge		
Draft	4'4"	1.32 m	Windshield Handrail	12'9"	3.89 m
Freeboard — Forward	5'2"	1.58 m	To Top of Optional Radar Arch	15'2"	4.62 m
Freeboard — Aft	4'4"	1.32 m	Twin 350 Gasoline Engines 300 SHP		
Headroom Most Areas	6'5"	1.96 m	Twin D.D. 3208TA Diesel Engines 375 SHP		
Freshwater Capacity ^(B)	110 Gals	416 ltr			
Fuel Capacity ^(B)	359 Gals	1,359 ltr			

STANDARD EQUIPMENT

Hardware and Miscellaneous

- All hardware chrome on brass or stainless steel
- Anchor, anchorline, and chocks
- Deck hawse pipe
- Bow and stern chocks and cleats
- Four springline cleats
- Stainless steel deck rail with chains at boarding gates
- Stainless steel flying bridge rails
- Fog bell
- Boat hook
- Zincs on rudders and shafts
- Dual air/electric horn
- Non-skid exterior decks
- Bow and stern staffs with ensign and pennant
- Life ring
- Life jackets
- Nylon mooring lines
- Portable fire extinguishers
- Trim tabs
- Bronze struts and rubber strut bearings
- Bronze rudders
- Propellers
- 1³/₄" stainless steel propeller shafts
- Bottom paint

Engine Compartment and Bilge

- 12 volt enclosed lights
- 12 volt bilge blowers
- Twin diesel freshwater-cooled, or twin gas seawater-cooled main engines with marine gears, exhaust silencers, hour meters, alternators, fuel filters, and seawater strainers
- Fixed fire extinguishing system for engine compartment with automatic and remote manual controls, plus audible and visual discharge signals
- 9Kw gas or 8Kw diesel generator with seawater strainers, freshwater cooling, remote start, hour meter, water lift muffler and sound enclosure (diesel only)
- Pressurized freshwater system with electric water heater
- Water fill hose for engines and generator
- Dockside water connection with pressure reducing valve
- Automatic bilge pumps and one portable, manual bilge pump
- Valves on all underwater through hull fittings with electrical bonding throughout
- U.L. approved fiberglass reinforced fuel tanks
- Sewage holding tank plumbed for dockside discharge with level indicator light in heads
- Fuel tank selector manifold

Electrical Systems

- Two heavy duty 12 volt batteries
- 120 volt automatic battery charger, 40 amp
- Battery paralleling system with switch at control console

- Transformer connected shoreline inlet(s)
- One 120 volt, 30 amp, fused electrical inlet with cord
- One 240 volt, 50 amp, fused electrical inlet with cord
- 12 and 120 volt light fixtures
- 120 volt duplex outlets
- Battery control panel with fusing and isolation switches
- DC distribution panel with magnetic circuit breakers and battery condition meter
- AC switching panel with volt meter, ammeter, and interlock selector breakers
- AC distribution panel with magnetic circuit breakers
- 6-Point systems monitor with visual and audible signals for: (a) engines — oil pressure, coolant temperature, drive oil temperature, exhaust temperature, (b) high bilge water, (c) fire warning in engine compartment, (d) engine compartment fire extinguishing system discharge, (e) AC power loss
- Ground fault protection on AC receptacle and lighting circuits
- Navigation lights

Flying Bridge

- Molded fiberglass
- Bench seat with vinyl-covered polyfoam cushions
- Storage under seat and console
- Stainless steel rails and stanchions
- Tinted acrylic windshield
- Control station with all necessary switches and dimmable lighted instruments
- Compass with dimmable light
- Dual lever clutch and throttle controls
- Hydraulic steering
- Helmsman and companion bench seat
- Recessed electronics box in console with plexiglass weathershield

Salon

- Wood paneling
- Carpeting
- Vinyl headlining
- Draperies with valance boards upholstered to match
- Bound access hatch to engine compartment
- Tinted safety glass
- Sliding side windows
- Windshields with cover
- Color TV with omni-directional antenna
- Cassette tape player with AM/FM stereo receiver
- Stereo speakers
- Storage cabinet, port side
- L-shaped lounge with sleeper
- Occasional chair
- Hi-lo table
- Parsons stools (2)
- 12 and 120 volt light fixtures
- 120 volt duplex outlets

Galley

- High pressure laminate countertops
- Vinyl floorcovering
- Storage cabinets and drawers
- AC/DC refrigerator with freezer
- 240 volt, three-burner range with oven
- Microwave oven
- Stainless steel sink
- 12 and 120 volt light fixtures
- 120 volt duplex outlets

Aft Deck

- Molded fiberglass with non-skid surface
- Dodger boards
- Stainless steel flying bridge ladder with teak steps
- Door/hatch to salon
- Walkways to forward deck

Bow Stateroom

- Carpeting
- Padded vinyl covering on hullside
- Vinyl headlining
- Vee berths with storage and drawers underneath
- Polyfoam mattresses, spreads, pillows, pillow shams, mattress pads and sheets^(C)
- Rope storage locker
- Hanging locker
- Frosted ventilating portlights
- Screened overhead hatch
- 12 and 120 volt light fixtures
- 120 volt duplex outlets
- Full-length mirror

Heads (Two)

- Vinyl floorcovering
- Vinyl headlining
- High pressure laminate or vinyl-covered bulkheads
- One piece molded marble lavatory and countertop
- Storage cabinet with mirror
- Storage cabinet under counter
- Stall shower with door and automatic sump pump
- Linen locker (bow head)
- Towel bar
- Retractable clothesline
- Electric toilet
- Exhaust blower
- 12 and 120 volt light fixture
- 120 volt duplex outlet
- Ventilating portlight with draperies (window in aft head)

Master Stateroom

- Wood paneling
- Carpeting
- Queen berth
- Polyfoam mattress, spread, pillows, pillow shams, mattress pads, and sheets^(C)

- Hanging locker with doors and automatic light
- Nightstand with drawers
- Dressers port and starboard with 9 drawers
- Draperies with valance boards upholstered to match
- Large portlight in transom
- Sliding side windows
- Stereo speakers with volume control
- 12 and 120 volt light fixtures
- 120 volt duplex outlet
- Full-length mirror

OPTIONAL EQUIPMENT

Base Options

- Controls, Salon^{(D)(E)} \$6,580
- Air Conditioning with Reverse-Cycle Heat^(E) 9,385
- Electric Heater^(E) 1,635
- Ice Maker in Salon Cabinet^(F) 1,040
- Wet Bar with Ice Chest, Aft Deck 1,610
- Swim Platform with Ladders and Gate 4,635
- Radar Arch 6,055
- Hardtop and Arch 9,825
- Closed Cooling System — Gasoline Engines 1,525
- New Bern, NC Delivery^(G) 7,640
- Cradle, Heavy Duty 2,995
- Water Delivery Kit^(H) 1,125

Mechanical and Miscellaneous Equipment

- Pulpit, with Stainless Steel Chute and Roller 5,410
- Windlass:
 - Model AA 2,460
 - Model AACW^(I) 4,310
- Anchor, with Chocks, Extra 250
- Dunnage Box, Fiberglass 1,390
- Oil Changing System (Diesel) 755
- Fuel Filter/Water Separator (Diesel Generator) 480
- Wash Down, Freshwater, Midship 495
- Wash Down, Seawater, One Outlet 1,330
- Spare Propellers, Gas^(J) 1,840
- Spare Propellers, CAT 3208TA^(J) 1,840
- Spare Prop Shaft — 1 Piece^(J) 1,240
- Sea Ladder with Storage Brackets 1,025

Electronics, Gauges and Instruments^(K)

- VHF/FM Radiotelephones:
 - Raytheon 77 2,650
 - Icom 100 2,130
- SSB Radiotelephones:
 - Stephens Sea 322 6,930
- Hailer/Intercom, Raytheon 410 2,700
- Depthfinders:
 - Datamarine, 3000 Digital 1,900
- Speed/Distance:
 - Datamarine 3200 Digital 1,870
- Loran: Furuno LC-90 2,370
- Radar: Raytheon R-41 8,090
- Autopilot:
 - Robertson AP200DL — Single 9,180
 - Hand-held Remote Station (each) 1,020
- Rudder Angle Indicator, VDO 780
- Glendinning Engine Synchronizer Single Station, Diesel 2,220
- Compass Compensation, One^(L) 275
- Compass Compensation, Two^(L) 370

Canvas

- Bimini Top, Folding with Boot 1,735
- Flying Bridge Enclosure, 4 Sides 2,705
- Flying Bridge Enclosure, 3 Sides 2,130
- Flying Bridge Cover 1,025
- Flying Bridge Instrument Cover 200
- Flying Bridge Helmseat Cover (each) 150
- Searchlight Cover, Canvas Front 95
- Depthfinder Cover 75

Electrical and Appliances

- Telephone/CATV Inlet^(M) 615
- Telephone Outlet, Add'l., (each) 270
- TV Outlet, Add'l., (each) 375
- Receptacle, Weatherproof, 120V 290
- Searchlight, Hand-held, 6" 265
- Searchlight, One-Mile Remote, 10" 2,645
- Docking Lights, Transom (pair) 1,495
- Docking Lights, Bow (pair) 1,555
- Docking Light Switches, Add'l., (each) 320
- Garbage Disposal^(E) 545

Decor and Furnishings

- Carpeting, Non-Standard Area —
 - Head (each) 180
 - Galley (each) 285
- Headboard, Upholstered (each)
 - Queen Berth, Non-Quilted 420
 - Queen Berth, Quilted 485
- Sheets, Add'l. Set, Single Berth^(C) 75
- Sheets, Add'l. Set, Queen Berth^(C) 85
- Mattress Pad, Add'l., (each) 80
- Pillow, Add'l., Dacron Filled 35

Paint^(E)

- Boot Top, Optional Color 205
- Feature Stripe, Optional Color 355
- Feature Stripe, Double Colors 735
- Transom Lettering: Name and Port 350

NOTES TO SPECIFICATIONS AND EQUIPMENT

(A) Right is reserved to make changes at any time, without notice, in prices, materials, specifications and equipment. Orders are accepted subject to prices prevailing at time of shipment. In order to show equipment size and location, line drawing may include some optional items.

(B) Weight shown is estimate of model's maximum weight displacement with largest engines available, average optional equipment aboard at time of delivery and fuel, holding and freshwater tanks filled. Capacities of tanks are estimated to be total capacity of all tanks normally furnished in this model. Usable capacities will vary depending upon conditions.

(C) One set of sheets includes: one bottom sheet, one top sheet, pillowcase(s). Colors on request.

(D) Visibility is limited from salon controls and varies depending on operating circumstances and conditions. Use caution and refer to Owner's Manual instructions.

(E) These prices apply only if order is placed prior to boat going into production.

(F) In lieu of salon forward port storage cabinet.

(G) Fuel additional.

(H) Includes 2 qts. A.T. fluid, 1 case oil, oil spout, assortment of screws, bulbs and fuses, deck mop and brush, bucket, hose, nozzle, 3 fenders, 1 set filters, belts, impellers and solenoids for main engines, 1 set of filters and impellers for generator.

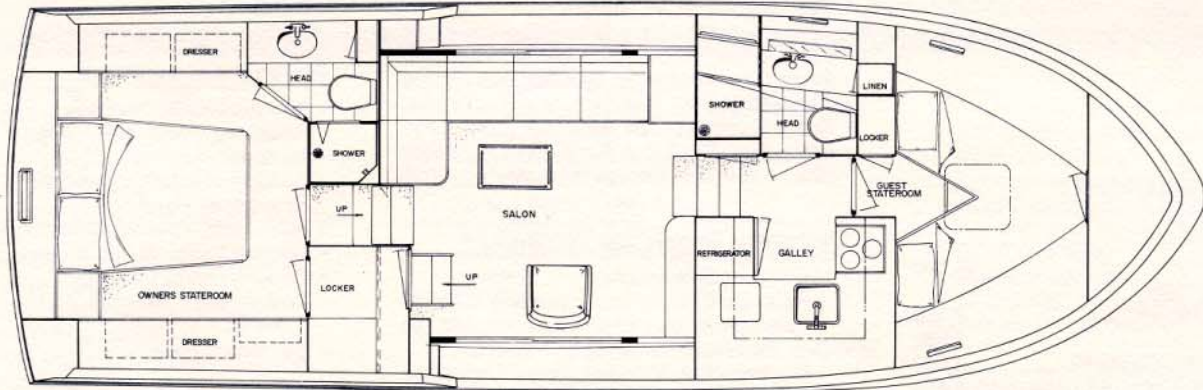
(I) This model is for use with chain and includes 300 ft. of 1/4" Acculoy chain.

(J) Storage location and installation not included.

(K) Prices are for surface-mount only. Custom work costs extra.

(L) Available only with New Bern delivery.

(M) Includes exterior inlet for telephone and cable TV with one telephone outlet and one TV outlet.



Hatteras Limited Warranty

1. THERE ARE NO EXPRESS WARRANTIES ON PRODUCTS MANUFACTURED BY HATTERAS YACHTS, EXCEPT THAT The Company will, through its selling Dealer, replace or repair, at the Company's option, any part (except as hereinafter provided) which is proven to its satisfaction to have been defective at the time of delivery to the first owner, and which defect is discovered within six months from the date of delivery to the first owner, if the part is returned, transportation prepaid, within thirty days after the defect is discovered, to the Dealer or to such other point of manufacture as the Company may designate.
2. This warranty shall not apply to:
 - (a) The cost of removal or reinstallation of part, or disassembly or reassembly of the unit of which it is a component.
 - (b) Varnishes, gelcoats, paints, fabrics, chromium plated and stainless steel finishes because of the varying effect resulting from different climatic and use conditions.
 - (c) Products not of the Company's manufacture. Any warranty provided by the manufacturer will be passed on to the owner if possible.
 - (d) The installation of any equipment by a Dealer or other installer.
 - (e) Racing boats or engines.
 - (f) Speeds, fuel consumption and other performance characteristics because they are estimated and not guaranteed.
 - (g) Conditions resulting from misuse, abuse, negligence, alteration or lack of performance of normal maintenance.
 - (h) Others than the first owner.
 - (i) Boats that are used in commercial or military activities.
3. THE DURATION OF ANY IMPLIED WARRANTY OR MERCHANTABILITY OR FITNESS FOR A PARTICULAR PURPOSE OR OTHERWISE SHALL BE LIMITED TO AND COINCIDENT WITH THE DURATION OF THIS EXPRESS WARRANTY. The replacement or repair of defective parts as stated in this warranty shall be the sole remedy of the purchaser and the sole liability of the dealer and the company under this warranty and any implied warranties. THE COMPANY OR ITS DEALER SHALL NOT BE LIABLE UNDER ANY CIRCUMSTANCES FOR LOSS OF TIME, INCONVENIENCE, LOSS OF USE, OR FOR ANY OTHER INCIDENTAL, CONSEQUENTIAL OR INDIRECT DAMAGES.
 - (a) Some states do not allow limitations on how long an implied warranty lasts or on the exclusion of incidental or consequential damages, so the above limitation on the duration of implied warranties and the above exclusion of incidental and consequential damages may not apply to you.
4. THIS WARRANTY IS EXPRESSLY IN LIEU OF ANY NON-CONTRACTUAL LIABILITIES, INCLUDING PRODUCT LIABILITIES BASED UPON NEGLIGENCE OR STRICT LIABILITY.
5. THE DEALER IS NOT THE AGENT OF HATTERAS YACHTS. The Company does not authorize the Dealer, or any other person, to assume for the Company any liability in connection herewith or any liability or expense incurred in the repairing of its products other than those expressly authorized herein. THE DEALER MAY NOT EXTEND, OR IN ANY WAY CHANGE OR AMEND, THIS EXPRESS WARRANTY.
6. The Company reserves the right to improve its products through changes in design or material without being obligated to incorporate such changes in products of prior manufacture.
7. You may secure performance of warranty obligations hereunder by:
 - (a) Oral or written communication with the Hatteras Dealer from which you purchased the boat, making an appointment to have the Dealer examine your Hatteras boat.
 - (b) Delivering your Hatteras boat to the selling Hatteras Dealer for his examination.
 - (c) In certain cases the Dealer is authorized to complete Hatteras Limited Warranty obligations unilaterally, and in others he must receive authorization from the Hatteras Service Department. The Dealer is obliged to follow whichever course is appropriate.
 - (d) Upon completion of Hatteras Limited Warranty obligations, the Dealer will notify you of the availability of your Hatteras boat for your pickup.
 - (e) Major mechanical components, such as engines, generator sets, electronics, appliances, and air conditioning, for example, are warranted by the manufacturer of the component. They have authorized service dealers in most major boating markets. Your Hatteras Dealer will identify such service dealers upon request.
8. Any other communications necessary in connection with this warranty should be sent to the following address:

HATTERAS YACHTS
Attention: Director of Service
2100 Kivett Drive
P. O. Box 2690
High Point, North Carolina 27261
9. THIS WARRANTY GIVES YOU SPECIFIC LEGAL RIGHTS, AND YOU MAY ALSO HAVE OTHER RIGHTS WHICH VARY FROM STATE TO STATE.

Hatteras

Hatteras Yachts

High Point, North Carolina 27261 U.S.A.

Hatteras Yachts is a registered trademark of Genmar® Industries, Inc.

© 1988 Hatteras Yachts, Division Genmar® Industries, Inc.

BG40DC20888