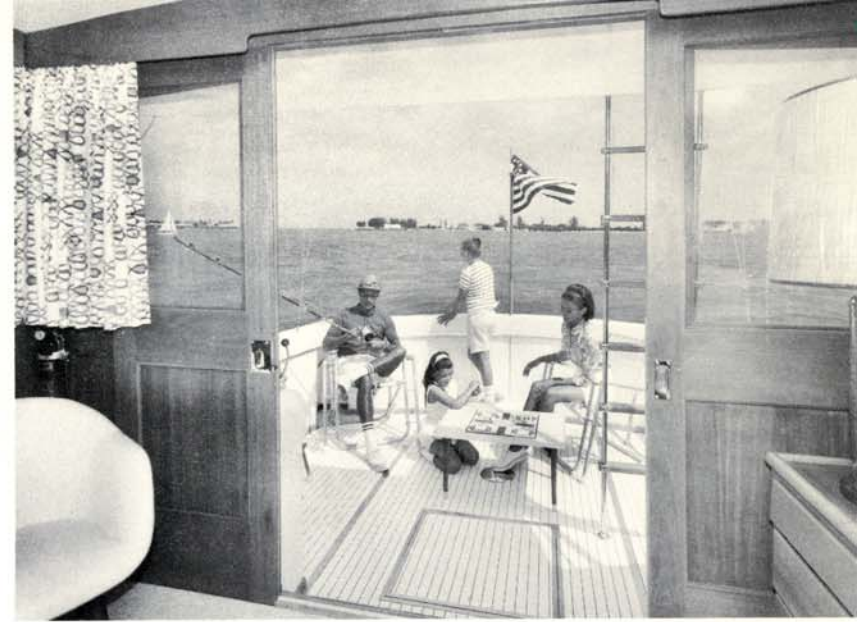




NEW FIBERGLASS 41-FOOT HATTERAS CONVERTIBLE



There is ample space for installing fighting chair or deck lounge chairs in the large, roomy cockpit.



Spaciousness is so apparent on this new Hatteras-41 Convertible that people just have to measure it to make sure their eyes are not deceiving them. In this deck lounge the height is 6'-6"; the width from cabin-side to cabin-side is 10' 10" and from the windshield to the sliding door bulkhead is 14' 2". Vinyl covered deck with interior finish of Philippine Mahogany. The curved sectional lounge easily converts to a full-size double bed. This room has complete privacy when the drapes are drawn and the sliding doors are closed. This pilot house converts to a state-room, or a living room.



The (optional) bar with ice-maker and stereo tape-player make this lounge convenient for relaxation and entertaining. Four 110-volt outlets enable you to use your television, lamps and other appliances. Two 110-volt Bullet Lamps and three 12-volt Bullet Lamps.

Reverse cycle air conditioning (optional) can be installed to cool or heat the entire boat.





The bow stateroom has two spacious bunks with polyfoam mattresses, wash basin, and heads; a large hanging locker, drawers and storage space beneath each bunk, as well as rope locker. Port lights and hatch are screened. Vinyl floor covering. Four 110-volt outlets. Two 12-volt light fixtures, opening ventilating hatch and skylight.

Master stateroom has entrance from galley and a private entrance to a large, complete head. There is a full length, large hanging locker, five large storage drawers beneath the full-size bunks with polyfoam mattresses. Two 110-volt outlets. Two 12-volt light fixtures; opening-ventilating hatch with skylight and screen.



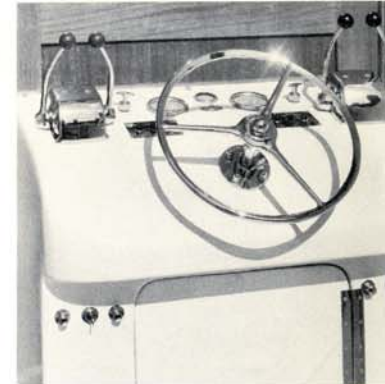
Large, complete head has an entrance from the galley and a private entrance to the stateroom. The stand-up man-size shower is supplied with pressure hot and cold water. Ample storage cabinet below the lavatory and a vanity counter. Over the lavatory is a medicine cabinet, and linen locker. Vinyl floor covering.

Efficient, roomy galley has three-burner electric stove with oven, ten cu. ft. refrigerator with freezer, ample dish lockers, glass rack. There is plenty of storage space and drawers, stainless steel sink with pressure hot and cold water; two 110-volt outlets for appliances. Opening ventilating and skylight hatch. Also, in a convenient place, is a new electrical control board for the ship's entire electrical system. Two 12-volt lamps and 110-volt fluorescent light.



The standard fly bridge of the 41-Convertible has a complete command station. The seats are fitted with vinyl covered polyfoam mattresses and back cushions for the comfort of those who like to ride with the skipper.

Dual lower controls are standard . . . your choice of either pilot house controls or cockpit controls for the avid fisherman.



This new 41-Convertible has more room for cruising luxury than many larger boats. It carries 300 gallons of fuel and 150 gallons of water. In the reinforced fiberglass Hatteras there are no bulky ribs and beams, so there is more usable interior space. It is a seaworthy yacht with greater safety and stability. Your maintenance worries are reduced to the minimum.



See specification sheet for list of standard and optional equipment.



This Hatteras-41 Convertible has been designed for boating enthusiasts who want a convertible cruising yacht. It can be converted to a highly maneuverable sportfisherman combined with the luxurious yacht facilities.

Low cost maintenance is assured by the one-piece laminated fiberglass hull and fiberglass superstructure.

Water tanks and fuel tanks are also laminated fiberglass. The floors are covered with easy-to-clean vinyl.

The sleek Hatteras hull has proved to be extremely seaworthy with speed and stability even in the roughest off-shore waters. Yawing and pounding are virtually eliminated. The fiberglass Hatteras provides more of everything except maintenance.

HATTERAS YACHT COMPANY
High Point, North Carolina

