

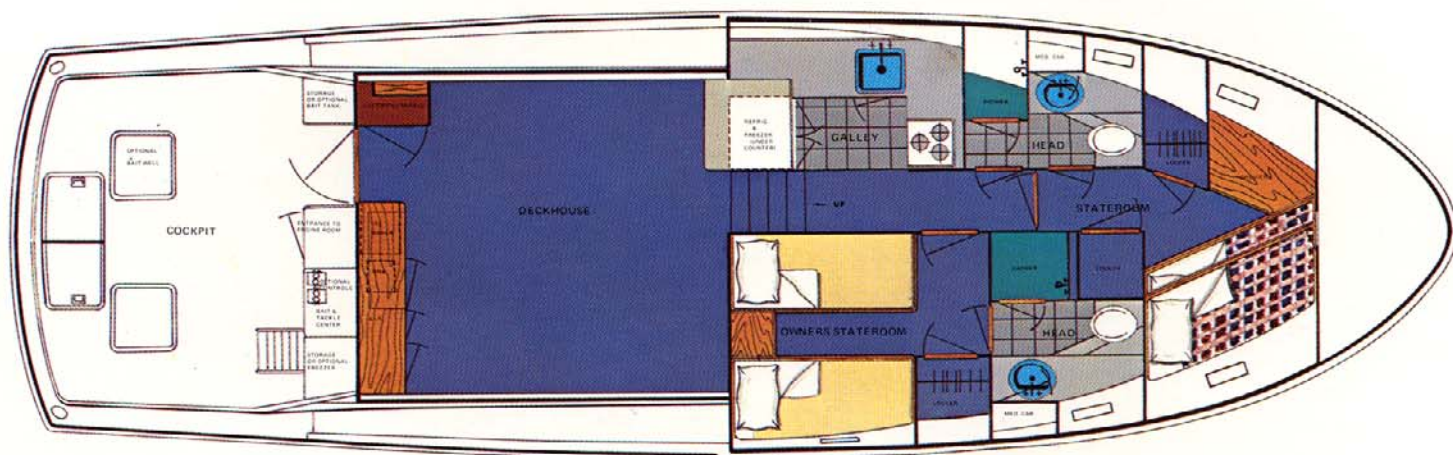
AMF

Hatteras

52 Convertible

The Hatteras

Standard Galley Down Arrangement



The Hatteras 52 Convertible is a 52' fiberglass sport fisherman powered by twin G.M. Detroit Diesel 8V-92T1's with options of 550 and 650 s.h.p. The design is by Jack Hargrave.

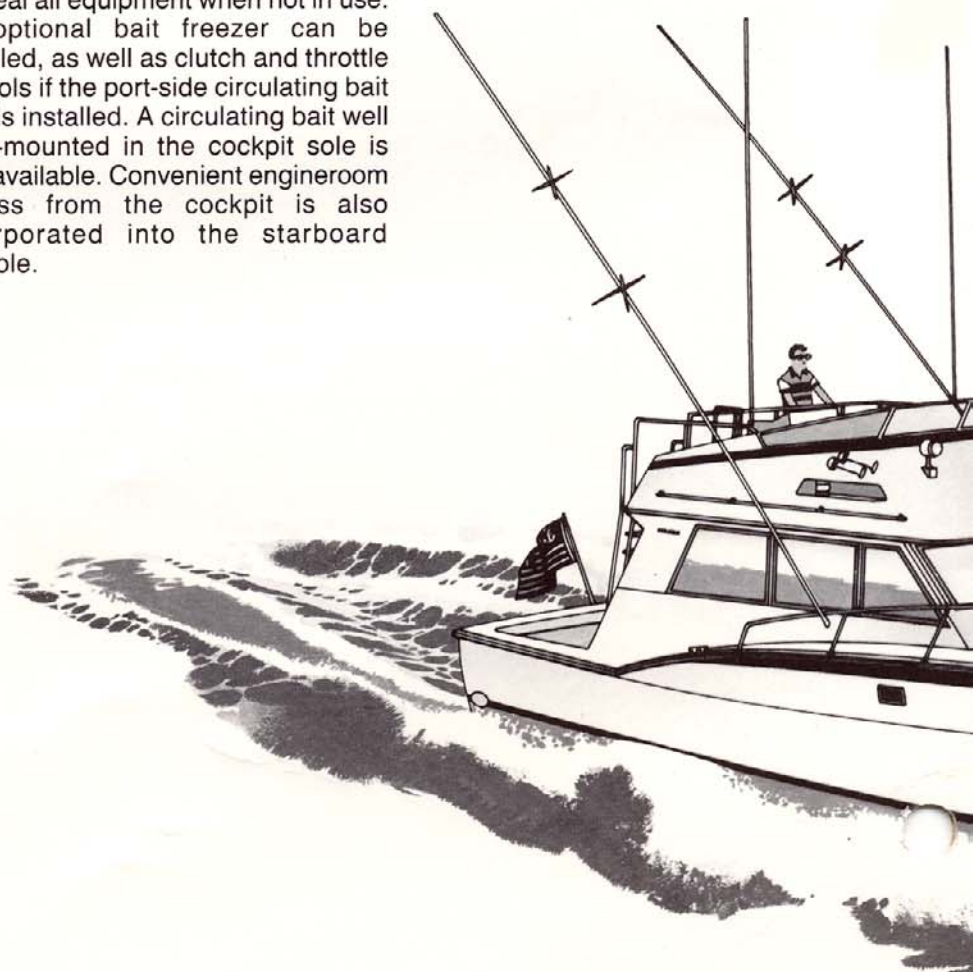
The 52's performance-engineered, modified-vee hull features cored fiberglass construction for maximum strength. Its double-chined design provides quick lift and stability in open water, plus maximum interior space for the Hatteras-designed accommodations and systems.

The 16'4" beam results in a fishing platform measuring 12' by 12'9" offering over 153 sq. ft. of non-skid, all-fiberglass cockpit area that includes a standard 30" transom gate with a large, flush-deck fish box available.

The 52 convertible also features one of Hatteras' latest design accomplishments: standard, molded-in bait and tackle console and storage areas offering a wealth of options designed to suit the needs of the tournament sport fisherman.

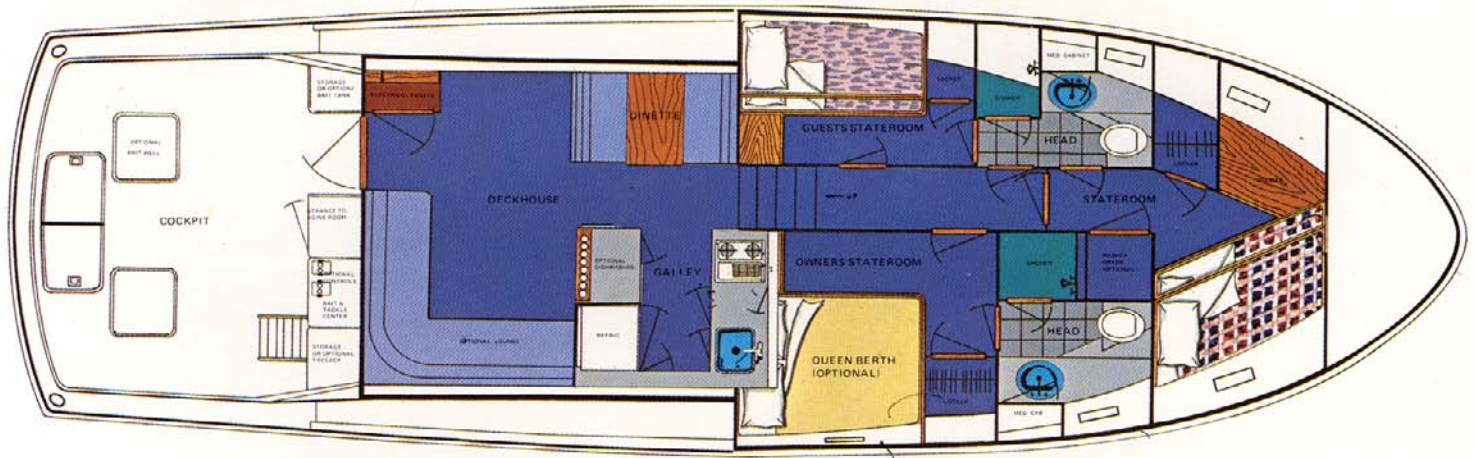
The port console offers two storage areas accessible through a front door and hinged top lid. Optional clutch and throttle controls fit in the top storage area and are concealed by the lid when not in use. Or, this area can house a stand-up, circulating bait tank.

The starboard console features a wet sink, bait-cutting area and tackle storage compartments. Hinged lids conceal all equipment when not in use. An optional bait freezer can be installed, as well as clutch and throttle controls if the port-side circulating bait tank is installed. A circulating bait well flush-mounted in the cockpit sole is also available. Convenient engine room access from the cockpit is also incorporated into the starboard console.



52 Convertible

Optional Salon Galley Arrangement



The cockpit includes a teak and stainless steel ladder to the flying bridge with helm station and instrumentation positioned to provide maximum visibility. Standard equipment includes helm seat, storage compartments and built-in L-shaped seating forward of the control console. A forward-ranking, tinted windshield is standard.

The Hatteras 52 offers two interior layouts: the galley-down arrangement featuring a below-decks galley, two staterooms and a large salon. The

deckhouse-galley arrangement features salon, complete galley and three staterooms below. Both stateroom arrangements feature two complete heads with stall showers.

The salon features built-in AM/FM stereo cassette player, reverse-cycle heating and air conditioning, sliding side windows of tinted safety glass and carpeting throughout.

The deckhouse-galley features standard microwave/convection oven, Jenn-Air range and 14-cubic-foot refrigerator/freezer with icemaker. A compact under-counter dishwasher is optionally available. The deckhouse galley arrangement also includes a convenient dinette that seats four and

converts to a double berth.

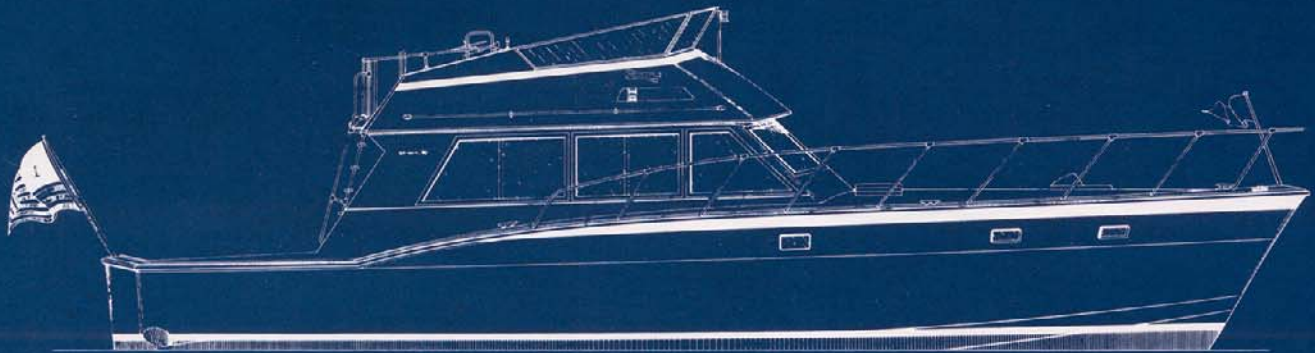
Below decks, the master stateroom offers twin berths or optional queen berth, hanging locker, built-in storage cabinets and access to a private head with stall shower.

The bow stateroom offers upper and lower berths, built-in dresser and hanging locker and private access to a complete head with stall shower. The companionway features a locker sized for installation of an optional washer/dryer.

The third guest stateroom features upper and lower berths with built-in dresser and hanging locker. All staterooms feature separate thermostat controls for the air-conditioning and heating systems.

Other standard features include 32V DC power and 120/240V transformer-connected shorelines, automatic battery charger, hot and cold pressurized fresh water system, CO₂ fire extinguishing system in the engine room with automatic and manual discharge, and the Hatteras Systems Monitor with audible and visual warning for engine water temperature, oil pressure, drive oil pressure, exhaust temperature, AC power loss, discharge of the engine room fire extinguishing system.





HATTERAS 52 CONVERTIBLE

PRELIMINARY SPECIFICATIONS

Length Overall	52'0"	15.85 m
Beam	16'4"	4.99 m
Draft	4'6"	1.37 m
Freeboard Forward	6'9"	2.06 m
Freeboard Aft	3'5"	1.04 m
Headroom Most Areas	6'6"	1.98 m
Fresh Water Capacity	185 gals	700 ltr
Fuel Capacity	1,065 gals	4,030 ltr
Weight Displacement	56,000 lbs	25,400 kg
Height Above Waterline to Top of Flying Bridge Windshield	15'10"	4.83 m

AMF

Hatteras Yachts

High Point, North Carolina 27261 U.S.A.

52C 5 184
Printed in U.S.A.

AMF Hatteras Yachts reserves the right to make styling design, equipment and construction changes without notice. Also, prices are subject to changes without notice. Some items shown may be optional. Hatteras is a registered trademark of AMF Incorporated © 1984 AMF Incorporated