


# Hatteras

52 CONVERTIBLE



The Hatteras 52 Convertible:  
**One of our greatest working  
convertibles is now one of our best  
looking convertibles.**



**C**oming from the heart of the Hatteras fleet, the 52 Convertible has always been one of our most generous boats.

This broad-beamed, generously-equipped machine has been able to do a lot more in 52 feet than competitive models can manage in 54 or 55 feet. Its grand proportions — topside and below — have made it a favorite among the sportfishing fleet. And its functional, strictly-business cockpit has helped to make the 52 the most envied boat in this size range.

That's why we're proud to reintroduce this classic fishing machine as one of our most attractive convertibles. As generous as ever in cockpit, flybridge, and interior accommodations, and now about as fresh and new as any boat can be.

Best of all, this pizzazz is for real. The 52C is a well-balanced, performance-engineered fishing machine. Designed by Jack Hargrave, its modified-vee hull provides stability and poise in a variety of open-water conditions, with all the power you need to get out and back in a big hurry.

On the bridge, ergonomics come to the fore. Control and visibility result from a well-placed helm station and instrumentation. The standard equipment up top includes helm and companion seats, storage compartments with a plex-covered area for electronics, a built-in L-shaped seating section forward of the control console, and an aft-raking tinted windshield.



*The cockpit on the 52C is superb. Measuring 12' by 12' 9" — totalling 153 square feet of work space — this area has been arranged to accommodate the personal needs of even the most esoteric fish hunter. In addition to a standard 30"-wide transom gate, the non-skid fiberglass cockpit features a wealth of storage areas — space for a circulating bait tank or storage in the port console, and a starboard console with a wet sink, a molded-in bait-and-tackle console, bait cutting area, optional clutch and throttle controls, and additional tackle storage compartments.*

*There's also room enough here for an optional bait freezer and, in the sole, an optional flush mount circulating baitwell or fish box. With all this built-in convenience, Hatteras has still found space for a wide entry hatch directly to the engine room, where near-standup headroom provides unexpected walkspace and access to all engine-room equipment.*

*Not surprisingly, this workable layout has made the Hatteras 52C a favorite among knowledgeable captains. With its fresh new look inside and out, it's likely to become a favorite of yours as well.*







**T**he Hatteras 52 is offered to you with a choice of two interior layouts. A lower galley standard arrangement features a generous salon, two grand staterooms, and a convenient dinette. The deckhouse galley optional arrangement provides topside food preparation and dining off the salon, and the space for three staterooms below.

Whichever arrangement you prefer, both layouts include two luxuriously complete heads with stall showers.

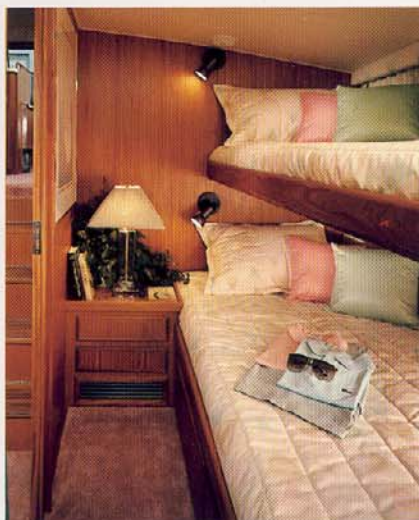
The interior presentation of the 52 exemplifies the way we build all of our sportfishing machines. Here, traditional craftsmanship and modern comforts join together to make life aboard a pleasurable experience for owner and guests. Our attention to detail — even the most minute — will become apparent to you with each new season.

For example, the extra touches in the salon include screened sliding side windows made of tinted safety glass, and a host of built-ins: icemaker, an AM/FM stereo with cassette player and a color TV.

Food preparation and clean-up are a breeze aboard the 52. The deckhouse galley layout comes equipped with a standard microwave/convection oven, a two-burner cooktop and a 16-cubic foot refrigerator/freezer with built-in icemaker. There's plenty of work and storage space here — in fact, enough to include an optional compact under-counter dishwasher if you wish.

The deckhouse galley plan also includes a convenient dinette with a welcome view of the outside world.

Throughout, the Hatteras 52 features our multiple-zone heating and air conditioning system for comfort year-round, with separate thermostat controls above and in each stateroom below.



*Your guests will feel at home here in the optional third stateroom, which includes a nightstand with two drawers, storage under the lower berth and a hanging locker.*



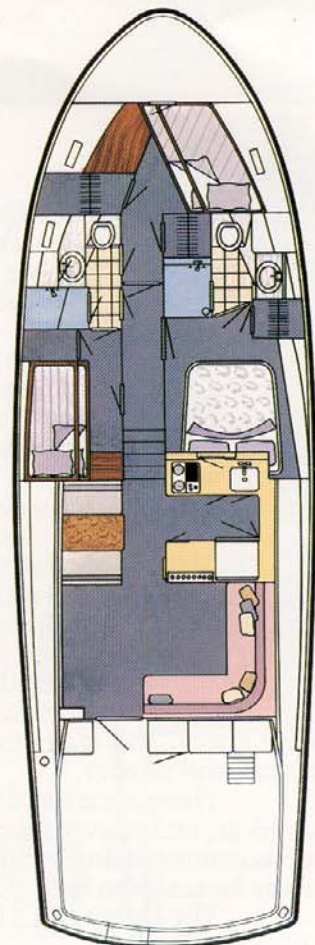
*In the standard floor plan, the guest head has its own private access. In the deckhouse galley layout, it's accessible from both guest staterooms.*

*Upper Left: You'll enjoy gathering with friends in the spacious deckhouse salon. A comfortable, relaxed setting offering a great view from the large windows.*

*Lower Left: The deckhouse galley with a microwave/convection oven, two-burner cooktop, plenty of storage, full-size refrigerator and space for an optional dishwasher.*

*Lower Right: The deckhouse galley layout also features a dinette. Comfortable seating for four, yet intimate enough for two.*

*The optional deckhouse galley floor plan includes three staterooms and topside galley.*





**A**s any seasoned fish hunter knows, there's a lot more to a fishing trip than simply fishing. Because we know you spend a good deal of time out of the chair as well as in it, we set out to make the interior accommodations on the 52 as comfortable as its cockpit is functional. And not simply comfortable for you, but for your guests as well.

For example, the master stateroom is available with a standard walk-around tapered queen berth or optional twin berths. Either arrangement is designed to allow you to move about easily in the stateroom. Hanging lockers, built-in nightstands and a wealth of drawer storage provide plenty of room to stow your personal gear.

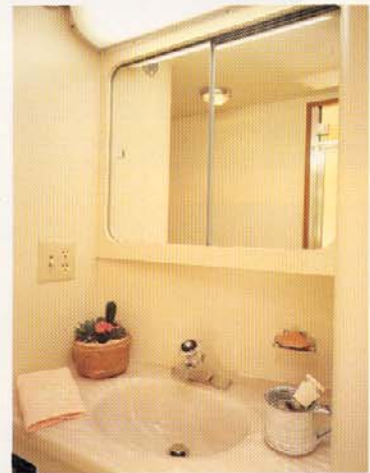
For privacy's sake, separate access to the master head, with its stall shower, sink, and linen closet, has been included.

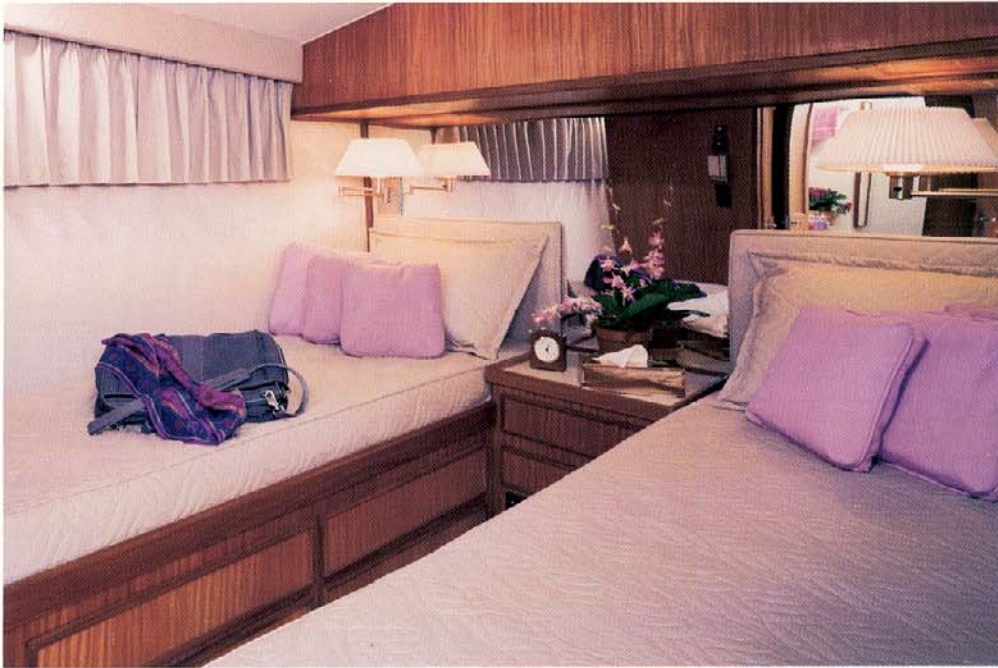
The bow stateroom features upper and lower twin berths and access to a complete head with stall shower. A hanging locker, a built-in dresser and a companionway door help to preserve the sense of privacy. The companionway also includes a locker designed to accommodate a standard washer/dryer unit.

If you select the deckhouse galley arrangement, the third guest stateroom below offers upper and lower berths with built-in dresser and hanging locker storage space. This stateroom has been planned to also provide direct access to the head and shower.

There are a lot of boats larger than the 52 you might consider to suit your all-around convertible needs. But none are more efficient in their use of space, more accommodating in their onboard comforts, more functional to your needs or more beautiful in their overall design than this proven winner.

The Hatteras 52 is indeed one of our most generous. And it looks all new . . . again.





Far Left:  
The stately master stateroom offers a walk-around queen bed, hanging locker, and private access to the master head with shower.

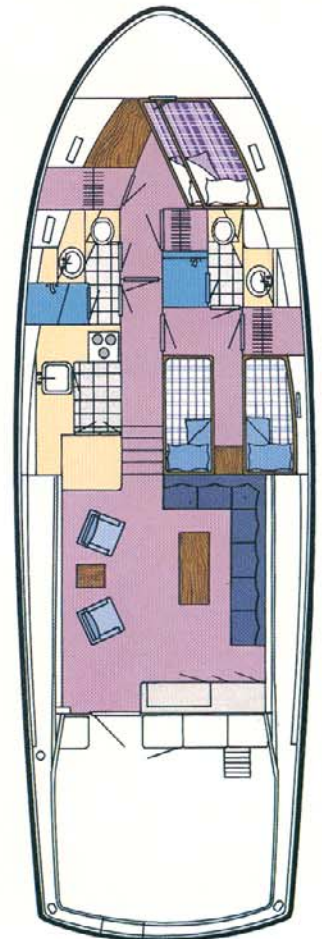
Left:  
The master stateroom with optional twin berths.



To say the standard salon is big is an understatement. It takes up almost one-third of the boat. And features impressive furnishings.



Bow stateroom for either floor plan features a built-in dresser, storage drawers under the lower berth, and a hanging locker.



The standard floor plan features a grand salon topside, and two staterooms, each with its own head, below.

Hatteras Yachts  
2100 Kivett Drive  
P.O. Box 2690  
High Point, North Carolina 27261 U.S.A.  
Telephone: (919) 889-6621

Hatteras Yachts reserves the right to make styling, design, equipment and construction changes without notice. Some items shown may be optional.  
Hatteras is a registered trademark of Genmar Industries, Inc. © 1987 Hatteras Yachts, Division Genmar Industries, Inc.

52C 20 887  
Printed in U.S.A.

