



AMF

Hatteras

58 Triple Cabin



For every yachtsman who takes pride in being his own captain, the most distinctive feature of this yacht is the wheelhouse. The enclosed bridge is his own domain where he can steer his course in privacy either during the day or when night cruising.

Here is complete, precise control at a finger's tip. Complete command station with a chart deck measuring 42.5 sq. ft. which gives him plenty of space to work on.

The windshield has 27 sq. ft. of window area for maximum visibility; and an added 6.9 sq. ft. of viewing from the port and starboard windows. In the aft bulkhead is a sliding, screened window giving him 11.8 sq. ft. for rear viewing. Drawers for storage beneath the cushioned seat on the aft bulkhead.

The entrance door to the wheelhouse from the aft deck has a window 3.8 sq. ft.

The aft deck, with extended hardtop, is large. It is a fine place for lounging, sight-seeing and entertaining. Total area is 185 sq. ft. It is protected with wing doors on the side decks and extended wind shields with sliding glass windows, starboard and port. (Note cover illustration.) With an optional plastic covering around the stern, as shown in the illustration, you can use this aft deck as an additional room for many occasions.

The flybridge has a complete control station. It is spacious and has cushioned seating arrangement for the skipper's companions. There are safety rails around the sides. (Again, note the illustration on the front cover.)



The main salon (three steps down from the bridge deck) is a lovely and spacious living room with exotic wood paneling. The floor area is 10 ft. x 12 ft., carpeted. There are sliding windows both port and starboard which are screened. There is plenty of room for the furniture arrangement of your choice. All furniture is optional. Shown in the illustration is a convertible lounge and a Hi-Lo table that serves as a coffee table. It can be raised to seat six or eight persons for dining.

The top of the forward bulkhead has approximately 11 sq. ft., both port and starboard, where you may place your television and other accessories. Lockers at the top of the bulkhead have approximately 15 cu. ft. of storage space. There are 110 Volt Duplex outlets, recessed lighting, a stereo tape player with speakers. Also, access hatches to the engines; and under the removable steps to the galley there is access to the engine room. Headroom in the salon is 6 ft. 5 in.



This entertainment center with sink, icemaker and bottle storage is standard in the salon and optional on the aft deck.



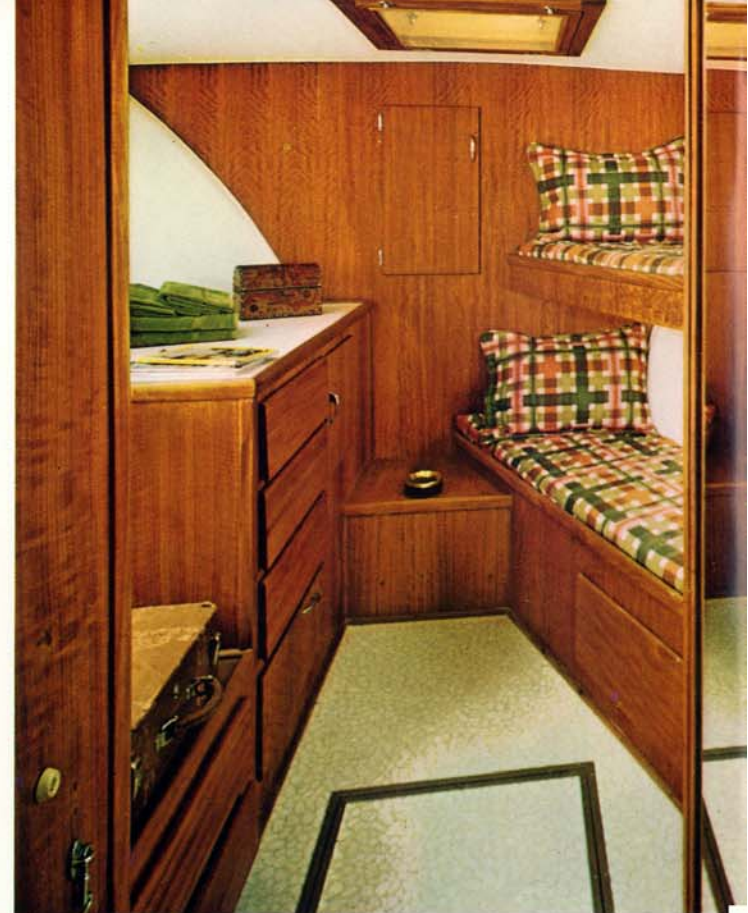
The apartment-size galley is fully equipped for preparing snacks or complete meals. The overhead height is 6 ft. 3 in. Counter tops are high pressure laminate. It has vinyl flooring. There are 110 Volt outlets for accessories; 15 cu. ft. refrigerator-freezer; a 4-burner, 220 Volt stove with oven. Exhaust blower. In the counter top is a recessed garbage container. The

stainless steel double sink has a disposal unit; and a fluorescent light above it. There is an electric blender. Storage space in the lockers for dishes and for food is almost 20 cu. ft. Hot and cold water pressure system, not only for the galley but for the heads as well. This galley is just three steps down from the salon.





The dinette, located on the starboard side of the galley area, has a laminated table top with built-in seats for four with vinyl covered polyfoam cushions and backs. The recessed area for screened portlight has counter service for appliances or knick-knacks. 110 Volt Duplex outlets. There is a drawer for storage in the base of one seat. It has an overhead light.



Crew's quarters are in the bow stateroom shown above which is entered through a door from the galley. This stateroom has upper and lower 6 ft. 6 in. bunks. Vinyl floor. There is a drawer with considerable storage space beneath the lower bunk and additional space in the drawers in the built-in dresser opposite the bunks. There is a screened overhead hatch as well as portlights both port and starboard. 110 Volt Duplex outlets for electrical accessories. The top of the built-in dresser provides space for a television or personal articles. There is a light over each bunk. A hanging locker. A full length mirror.

There is a door to the private head. This head has a shower with curtain. There is a medicine cabinet with storage (light over mirror), vanity with vitreous china lavatory, electric toilet. Exhaust blower.



The completeness of the equipment in this yacht for home living is shown in the illustrations at the left; stove with oven, dishwasher, and conveniently located in a recessed area in the companionway is an optional clothes washer and dryer.



The master stateroom is at the aft end of the companionway which is four steps down from the salon. It is spacious, with a large double bed 6 ft. 4 in. with polyfoam mattress (optional). (Standard arrangement has two single beds with bunk light over each and built-in dresser between them.) Built-in night tables on each side of the bed. Each night table has two drawers with storage space and a locker beneath the drawers. Drawers for storage are under the bed on either side. There are screened portlights on port and starboard and in the transom. An overhead hatch is screened. This stateroom has a private entrance door and a private door to the master head. The floor is carpeted. There are 110 Volt Duplex outlets for accessories. There is a large hanging locker and wardrobe locker. Stereo speaker.



Master head has private entrance from stateroom. Built-in vanity has a 6 sq. ft. high pressure laminate top with a vitreous china lavatory. Storage space in vanity is 2 cu. ft. Above vanity is a mirrored medicine cabinet with fluorescent light. It has a stall shower with seat. 110 Volt Duplex outlets for accessories. Exhaust blower. Screened portlight. Electric toilet.

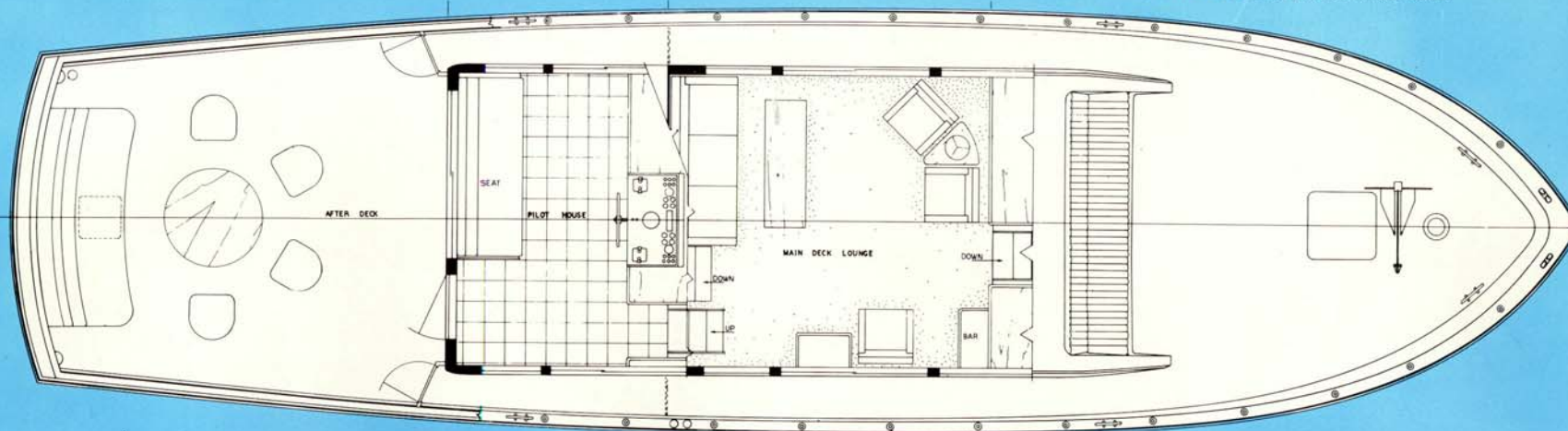
The guest head is directly across the companionway from the guest stateroom. It has a private stall shower with seat. The vanity has a vitreous china lavatory with storage space in the base of it. There is a medicine cabinet with mirror. There is a light over the mirror. An exhaust blower. 110 Volt Duplex outlets. The toilet is electric.



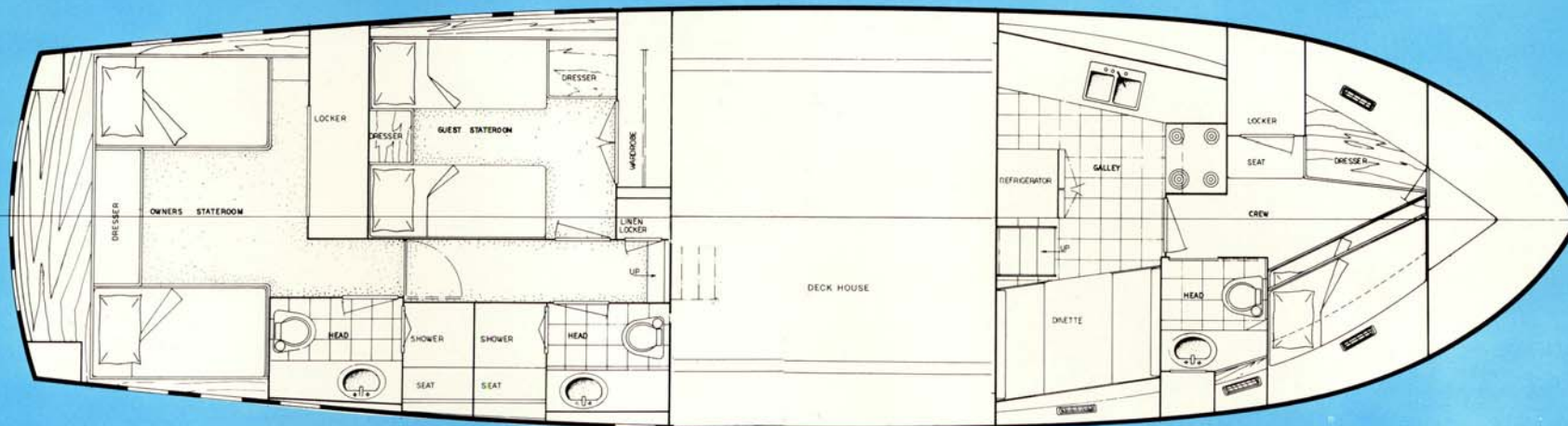
The guest stateroom shown above is on the port side of the companionway at the bottom of the steps leading down from the salon. It has fore-and-aft bunks 6 ft. 6 in., with polyfoam mattresses. A built-in night stand between the bunks with four drawers. There are two drawers under each bunk for storage. In the forward right corner is another built-in cabinet. There is a hanging locker. A full length mirror. Stereo speaker. Individual bunk lights.

(Some items optional)

Hatteras Yachts, High Point, N.C. reserves the right to make styling, design and construction changes without notice. Also, prices are subject to change without notice.



These floor plans show the functional arrangement of this 58 Triple Cabin that provides the facilities you would want for comfortable living afloat.



AMF | HATTERAS YACHTS High Point, North Carolina 27261 U.S.A.