

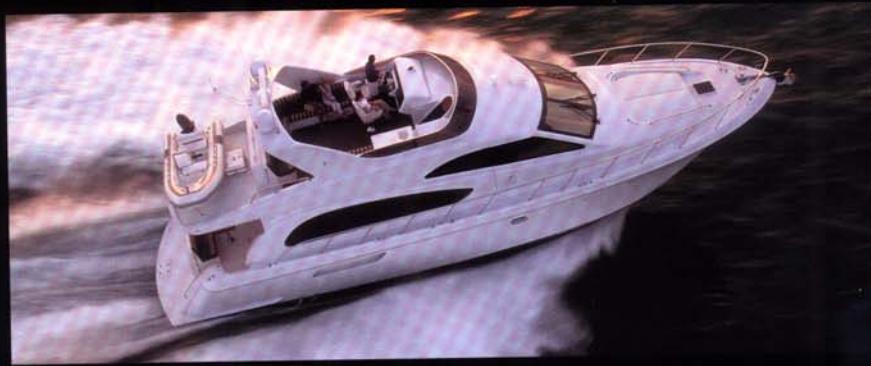
THE HATTERAS 6300







Like all the Hatteras' before her, the 6300 was created using the same rigid devotion to quality and durability that every Hatteras has been built with since the first one was



launched over 40 years ago. The exterior design of the 6300 is a drastic departure from the classic lines of her predecessors. Expansive arcs and sweeping curves of her profile give the impression that the 6300 is in motion even when she's standing still. Bold while not being overdone, these simple elegant lines will keep her design fresh and contemporary for years to come.









TO US, SPACE WASN'T A LUXURY.
IT WAS A NECESSITY.

Step into the salon of the 6300 and step into another world – an expansive world of space, light and luxury. With the ambiance of an expertly built custom home, the spacious salon opens to the galley and beyond to the pilothouse in a sweeping vista of roomy elegance and rich wood. The flawless architectural woodwork of the 6300 features a genuine Makore wood veneer coated with a high gloss polyurethane finish for a rich, lustrous look and feel. You also have the choice of creating your interior in a real cherry or maple wood veneer – all complementing the expert craftsmanship of the flush-fit cabinetry and reveals in the joinery. The 1 1/2" hand-crafted solid wood bullnose moldings and 1" wood blinds attest to the level of detail for which Hatteras is renowned. The fluted wood cornice moldings are not only visually stunning, but expertly functional as well. The air conditioning is vented through linear slots in the fluted moldings, creating a comfortable airflow through the entire length of the salon and galley. When you are ready to relax, sink into the plush depths of the standard custom built sectional – beautiful and functional with additional storage under its removable cushions – and enjoy the complete entertainment center and surround sound system. Create your own mood – airy and open or dimmed and intimate – with an abundance of recessed adjustable lighting incorporated into the beautifully designed custom headliner and low-level strip lighting. In every detail, we strived for the ultimate in quality craftsmanship and luxurious amenities to make this spacious salon an elegant place to enjoy.





THE GALLEY WAS DESIGNED SO THAT EVEN A CHEF COULD CALL IT HOME.

Your eyes sweep from the salon forward to the galley of the 6300 without interruption – they are stunningly combined into one spacious entertainment area. Hatteras used the same exquisite flush fit wood cabinetry found in the salon throughout the galley for added visual appeal. By cleverly sinking the galley 8", it remains an elegant extension of the salon while countertops are hidden from salon view. Underneath its stylish good looks, it is truly a working galley with standard dual Sub Zero™ under-counter refrigerator/freezers, dishwasher, garbage disposal and four burner cooktop. The microwave/convection oven is wonderfully concealed behind wood cabinet doors – out of the way and out of sight when not in use. Amtico™ flooring gives the rich look of real teak and holly but is much more durable and makes cleanup effortless. The solid surface countertop made of Avonite™ provides ample space for meal preparation; countertop backsplashes protect the wood. Plenty of storage and a very open design will make even the most discerning chef confident that cooking for a party of twelve is as easy as cooking a dinner for two.





OUR VISION WAS TO GIVE YOU A BETTER ONE.

Unparalleled visibility and panoramic views greet you as you step up from the galley into the pilothouse. Sit in the electric helm chair and steer the 6300 in comfort with frameless windows providing a sweeping vista in front of you. There is no need to go to the bridge when docking this yacht – a 25" hydraulic bow thruster and Sturdy single lever electronic controls make maneuvering a breeze. Place your hands on the tilt-adjustable steering column and you instantly feel connected to the yacht. For almost effortless control, Hatteras created a semi-wraparound console to starboard that houses the impressive standard electronics package. All switches, engine readout displays and Hatteras Systems Monitor are well placed for increased readability and convenience. The rest of the pilothouse is finished the way you would expect a Hatteras to be with rich woods, Amtico™ flooring and padded console panels. A solid surface tabletop and L-shaped lounge provide ample room for dining or riding. There is also a chart flat area with storage below. The impressive standards and evolutionary design of the pilothouse and helm station create an immensely open and inviting place from which to enjoy your journeys.

THE MASTER STATEROOM





You are greeted by spacious elegance as you enter the master stateroom through the impressive arched double doors. This stateroom runs the entire width of the 18'3" beam and, with 7'1" of headroom, resembles a luxurious suite. Architectural style wood cabinetry with bowed fronts adds to the sumptuous look of the room and cleverly provides additional storage. Padded panel wallcoverings and headliner, oversized portlights, plush throw pillows and workable Roman shades complement the design. The queen-sized berth features a custom designed headboard and a cedar lined storage compartment accessed via gas-assisted cylinders underneath. Two rich wood dressers and twin nightstands provide a lavish 21 drawers; a five-foot wide cedar lined hanging locker offers even more storage. An exquisite concave entertainment center houses the standard 20" TV/VCR and entertainment system with CD player.

THE GUEST STATEROOMS



The staterooms of the 6300 are equipped to provide spacious comfort and privacy. Every stateroom features its own climate control, allowing you to keep individual settings. The bow stateroom has an adjoining private head, as well as a queen sized berth with cedar-lined storage underneath. An abundance of storage is provided by the cedar-lined hanging locker and overhead storage cabinets, both port and starboard. A 13" TV/VCR combo system and stereo speakers provide guests with a well-appointed place to relax. To the starboard side of the bow is the twin berth stateroom and directly across the companionway is the second guest head.



Hatteras' meticulous craftsmanship and design ingenuity follow through into the three heads of the 6300. Beautiful wood covers the bowed style cabinetry, which not only makes for a stunning detail but is also functional, allowing for more storage space. Additional storage is integrated into the mirrored cabinet above each sink. Solid surface countertops with backsplashes protect the woodwork and wallcoverings from moisture. The thoughtful use of full Plexi-mirrors and large portlights in every head continues the airy and spacious feeling that flows through the entire yacht. Each of the guest heads is outfitted with a shower, while the master stateroom gets a unique tub and shower combination. For added durability, every head features the same Amtico flooring used in the galley and pilothouse to resist moisture and make clean-up effortless. Not surprisingly, Hatteras designed every space to maximize functionality and showcase its beautiful detail work.

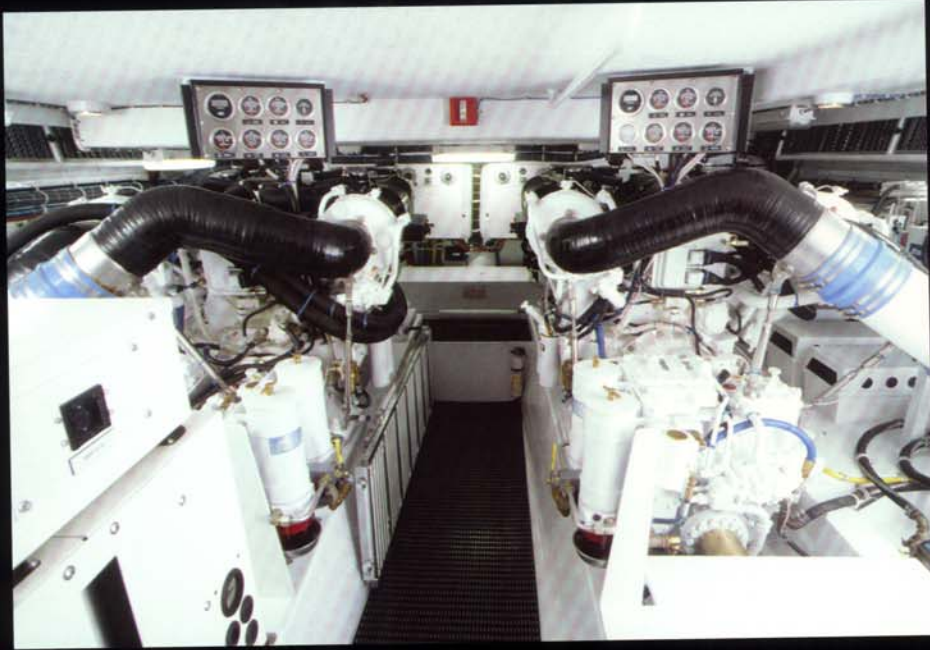


P E R F O R M A N C E

From the beginning, we engineered the new 6300 to surpass the long-acclaimed Hatteras standards for motor yacht performance. Incorporating a revolutionary hull design, the 6300 effortlessly reaches a top-end speed in excess of 30 knots. Tremendous propulsion efficiency is achieved by utilizing deep gear ratios that drive seven blade propellers. This allows for optimum performance while increasing fuel efficiency and cruise speed that is constantly maintained under variable conditions, all in a vessel that's less load sensitive. As you bully the 6300 through the largest breakers, the ride is nothing but smooth and elegant with lower vertical accelerations, increased horizontal thrust and minimum vibrations. Due to its power hydraulic steering and instantaneous clutch response, maneuverability and handling is tight and responsive. Even in the tightest slip spaces, you'll find the dockside handling extremely satisfying.







Access the engine room through the hatch on the aft deck.

When making your way down the ladder you enter a vast

lazarette that is also available

as crew quarters. Storage

space abounds in this well lit



area. Forward through an aluminum watertight door,

the engine room has an amazing 5'7" of headroom. Ease of

accessibility to all systems was our first priority. Wiring is

neatly routed and protected from chaffing while the dual

fuel filters, oil change system, gensets and engine gauge

panels are all clearly visible from centerline or the

engine room entrance. Maintenance is a snap with all

components clearly labeled and ample room to work.



THE FLYBRIDGE

Ascend the stainless ladder from the pilothouse and enter the flybridge through a plexiglass door. Like the rest of the 6300 the flybridge is amazingly spacious – twice as large as most yachts of this size. Piloting is effortless from the upper helm with a tilt steering wheel, single-lever electronic controls, line-of-sight gauges and the bow thruster control at your fingertips. Entertaining from the upper deck is easy too – make cocktails and light snacks at the built-in wet bar and refrigerator/icemaker with solid surface countertop and serve your guests as they lounge in the roomy L-shaped seating area. When you want to venture ashore, lowering the dinghy is incredibly simple via a standard, fully hydraulic davit that is cleverly concealed from view behind the bench seat.



THE AFT DECK



Access from the salon to the aft deck is through a three-paneled stainless steel door. The deck is the perfect place to dine *al fresco* with molded-in seating and handsome solid surface table. Abundant lighting was incorporated to create warm and dramatic moods when entertaining on the deck. Descending to the swim platform, you'll notice we paid close attention to those who love the water. We used unique pop-up cleats that hide away for protection when not in use. Note the hot/cold shower, fully retractable swim ladder and an optional access door through the transom for storage. By keeping with versatile and open exterior spaces, we created alternate places to entertain a large or small group of people, while still affording you some private space when you need it.





110 NORTH GLENBURNIE ROAD NEW BERN, NC 28560
252.633.3101 WWW.HATTERASYACHTS.COM