

HATTERAS CUSTOM SERIES 107 RAISED PILOTHOUSE MOTOR YACHT

Specifications

Builder Hatteras Yachts
Client European Client
Completion Date Second Quarter 1991
Configuration Hatteras 107 Raised Pilothouse Motor Yacht
Material Fiberglass Hull and Superstructure

Length Overall 106'9"
Beam 23'10"
Draft 6'6" (est.)
Fuel Capacity 6,966 gals.
Engines Two (2) MTU 12V-396 TE94 diesel engines
2,142 SHP each

The Hatteras 107 Raised Pilothouse Motor Yacht was christened in Second Quarter 1991. This vessel is currently serving its European owner in the Mediterranean Sea.

The custom arrangement includes a full-width master suite located amidships and privately accessed by a dedicated stairwell, two guest suites aft accessed from a private, stand-alone circular stairway, and crew's quarters for six located forward and accessed from a galley stairway. The main deck level features a spacious salon, aft deck entertainment area, formal dining area separate yet open to the salon, private owner's sitting room and complete galley forward. Above is the raised pilothouse with access to the flying bridge, both with complete control stations.

The exceptional master suite of this custom Hatteras features full-beam width, a king berth, crafted-in lounge seating port and starboard, complete entertainment center, master head with his-and-her amenities, and is accessed from the salon by a private stairway.

Also accessed from the salon via a separate, private stairway are two guest suites, each with private head. Below, the stairway opens to a large foyer that accesses the staterooms, is large enough to hold a couch (for an additional sleeping area) and provides direct access to a head. Above, this unique stairway is placed amidships at the aft end of the salon and is incorporated into a half-round exterior wall made of heavily formed clear acrylic and including port and starboard clear acrylic doors to the aft deck lounge area. This arrangement is not only functional, but creates a magnificent salon vista through a completely clear wall aft.

The main-deck salon — featuring extensive use of genuine leather wall coverings — incorporates independent conversation areas port and starboard, plus an open, formal dining area forward that includes a unique island cabinet creating a functional design element that subtly separates the salon from the dining area. The absence of intermediate bulkheads between the forward salon/dining area bulkhead and the aft salon bulkhead — coupled with the visual openness extending even further aft by this aft bulkhead being clear acrylic — delivers a singular, spacious salon attractively designed to accommodate gala entertaining or casual relaxation. A day head is also conveniently located on the salon level.

Forward, the main deck also features a separate and private owner's sitting room, and a complete galley. A stairwell just forward of the galley opens to a foyer below accessing the forward crew's quarters complete with crew galley and lounge, private captain's suite with head, and two crew staterooms, each with private head.

Housing two MTU 12V-396 TE94 diesel engines with electronic controls, the engine room is air-conditioned and conveniently accessed. Additional equipment includes two 50 Kw generators, one 24 Kw generator, two 800 GPD watermakers, 56 hp bow thruster and Naiad 301 stabilizers.

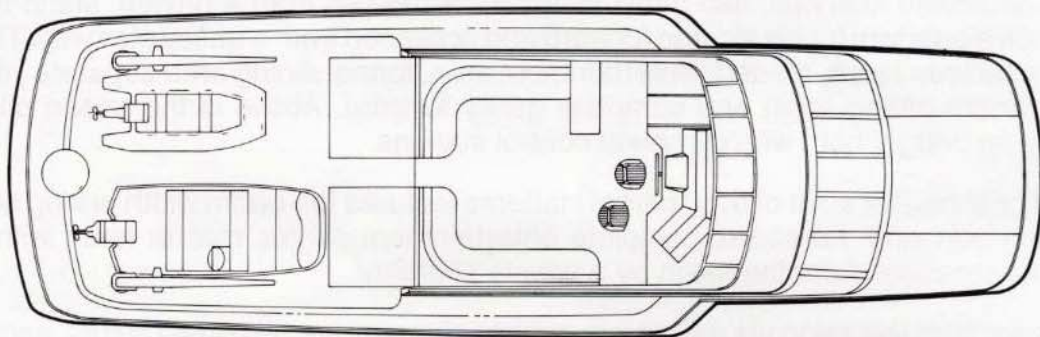
In addition to ample lounges for guests and a circular bar with seating, the flying bridge features a complete control station with console designed to accommodate the most sophisticated operations and electronics equipment. It also offers convenient access to the after boat deck.

Schnupsi

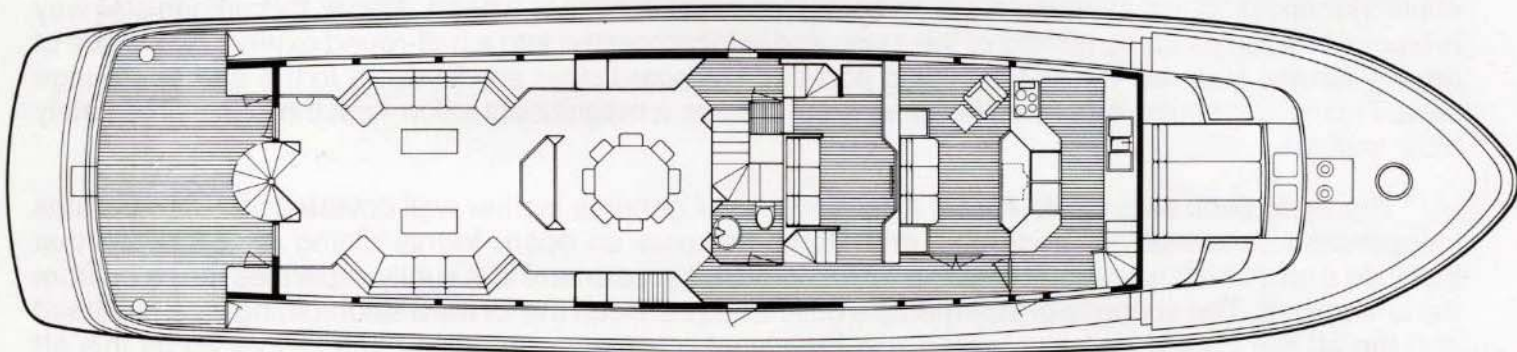
HATTERAS CUSTOM SERIES 107 MOTOR YACHT



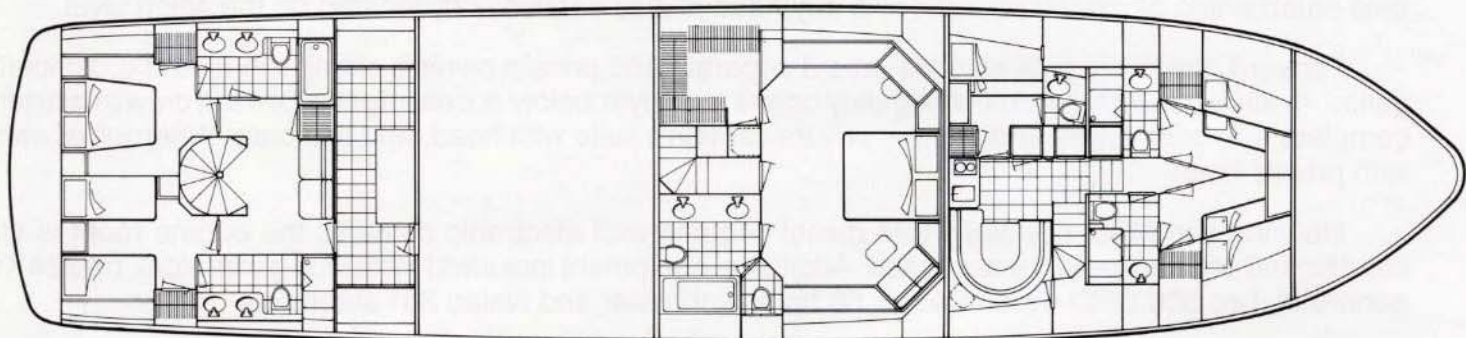
PROFILE



BRIDGE DECK



UPPER LEVEL PLAN



LOWER LEVEL PLAN

Hatteras Yachts
High Point, North Carolina
27261 U.S.A.

Hatteras is a registered trademark of Genmar® Industries, Inc.
©1992 Hatteras Yachts, Division Genmar® Industries, Inc.
107MY 5M 1092