

The new 31 foot fiberglass **Hatteras** Cruiser



This new fiberglass Hatteras 31' Cruiser is a fan



ily boat with many extras



(It even has a deep cockpit to make it safer for children)

The needs of the family were catered to by luxury-yacht designer J. B. Hargrave when he planned this new Hatteras 31 foot cruiser.

It has a deep cockpit to make it safer for children. And the cockpit has a built-in step to the cat walk on both port and starboard.



These photos show the advantages of the roomy deep cockpit.



This shows the spacious roomy cockpit, the control station and the all-around view for the helmsman. The companion seat is optional.



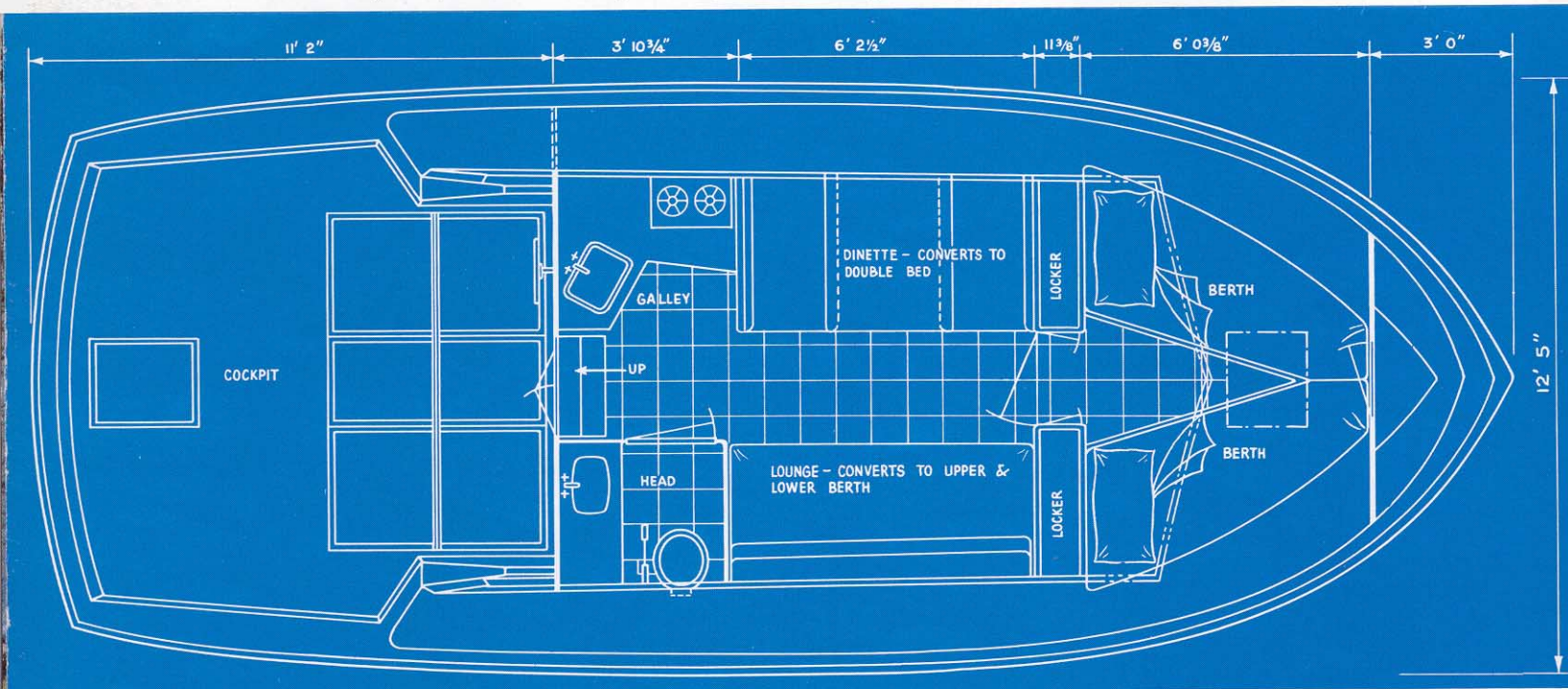


The deckhouse has a convertible lounge opposite the dinette. Head room is 6'3". Screened sliding windows. (Note opened door that closes to provide privacy between bow stateroom and deckhouse.)



The lounge converts to an upper and lower berth. There is 15 cu. ft. of storage space in the 2 drawers in the base of the lounge and in drawers in the dinette seats.

This floor plan (includes some optionals) shows exactly what you get for comfortable living.

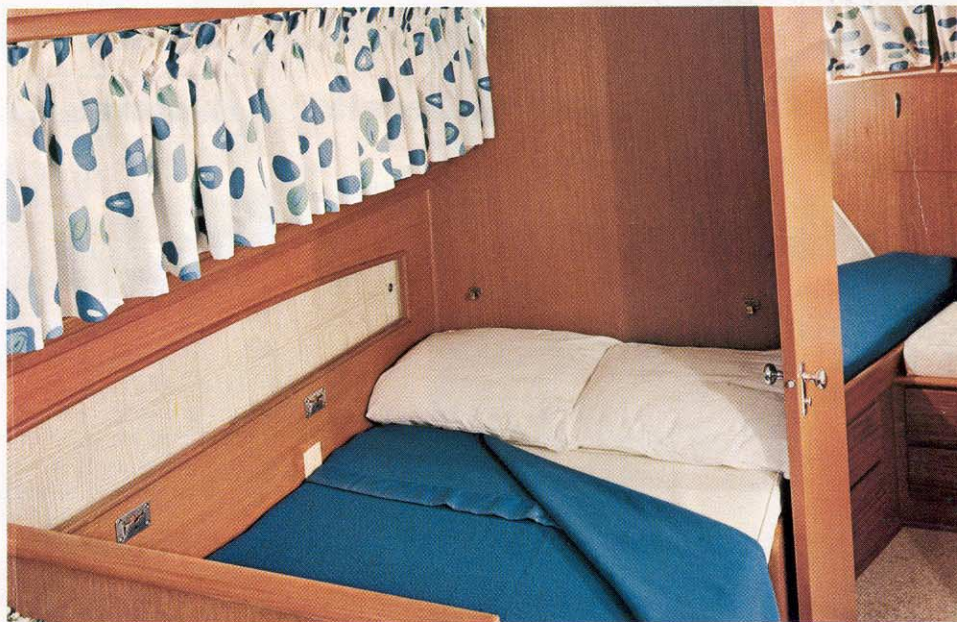


SOME EQUIPMENT OPTIONAL

SPECIFICATIONS SUBJECT TO CHANGE WITHOUT NOTICE



Four persons can be comfortably seated in the dinette which is just arm's length away from the galley. There is $6\frac{1}{2}$ cu. ft. of storage space outboard with sliding panels.



Shown above is the way the dinette converts to sleep two.

The galley has a 2-burner alcohol stove (electric optional), ice refrigerator (electric optional). Counter top is Micarta. Stainless steel sink with hot and cold water pressure system. Galley, as well as deckhouse, has vinyl covered floor. (Air conditioning optional)



It's nice to have a fiberglass **Hatteras** 31' Cruiser Outside your door

***Hatteras
Yacht
Company***

HIGH POINT, NORTH CAROLINA

