



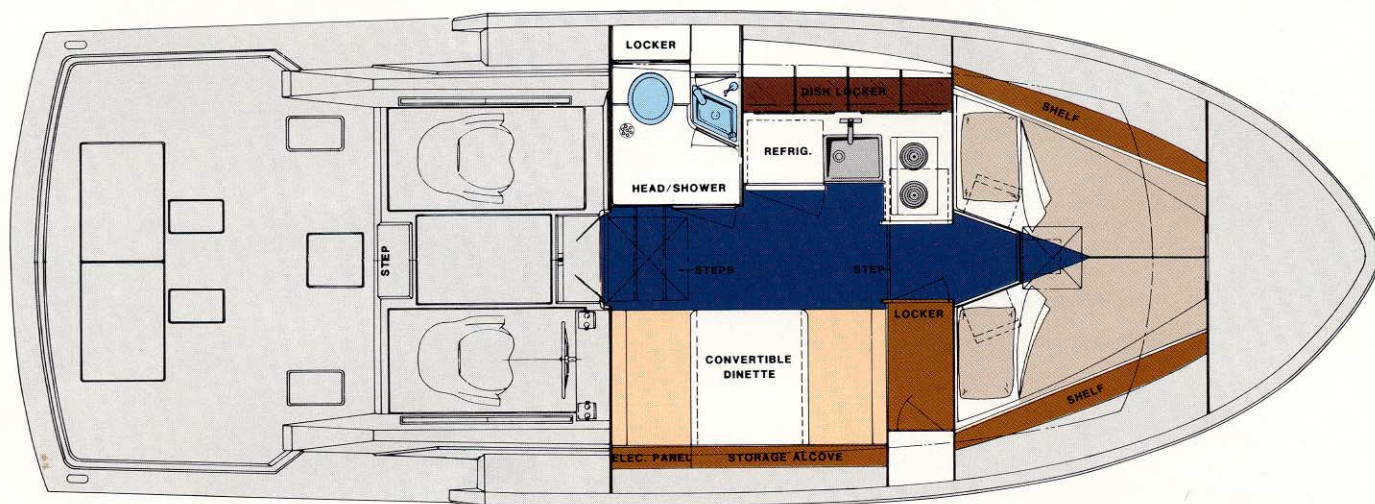
AMF
Hatteras

32 Sport Fisherman

32 Flybridge Sport Fisherman

Spirited. Rugged. Only H

The 32 Sport Fisherman



The Hatteras 32 Sport Fisherman and 32 Flybridge Sport Fisherman. Both rugged. Both compact. Both performance oriented. And both from Hatteras.

Whether you opt for the openness of the 32 Sport Fisherman with its expansive cockpit and control deck area, or for the 32 Flybridge Sport Fisherman and its spacious flying bridge with room for your family or fishing party, these are two blue water fishing machines designed to give you all the performance and reliability that are the Hatteras tradition.

PERFORMANCE ORIENTED. Performance is the hallmark of the Hatteras 32 Sport Fisherman and 32 Flybridge Sport Fisherman. Their all-new hull design and choice of two proven power packages provide the stable, hard-charging performance you expect from a Hatteras sport fishing machine.

The Jim Wynne designed hull offers an exceptionally deep, sharp entry with a flared bow for dryness. Its constant deadrise, modified-vee after body is flattened at the chine for extra stability, has lifting strakes forward to get you up quickly, propeller pockets aft for lower drive shaft angle and moderate keel for good tracking ability.

And power? Twin 340 Mercruiser gasoline engines deliver 600 horsepower of get-up-and-go. Or if you prefer diesel, twin 3208T Caterpillars also offer an impressive 600 horsepower to take you fast to the fishing grounds.

That's 30 mph plus, and a stable fishing platform to boot.

COMPACT. The Hatteras 32s. Maximum fishability. No wasted space. Their 12' beam offers a spacious, self-bailing

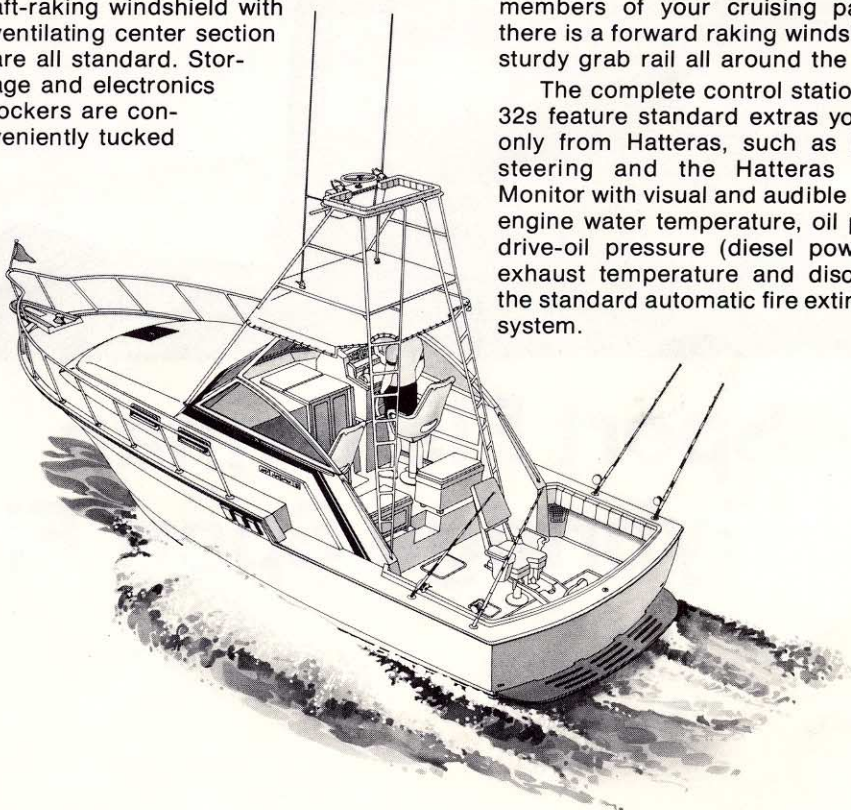
cockpit that is large enough to swing a big fighting chair, while the stepped-down sheer provides low freeboard aft. The non-skid, all-fiberglass cockpit sole provides solid, secure footing. And an optional fish box slips into a large lazarette hatch, out of your way.

Open to the cockpit in the 32 Sport Fisherman, the separate control deck area offers a complete control station to starboard. An adjustable helm seat, companion seat to port and aft-raking windshield with ventilating center section are all standard. Storage and electronics lockers are conveniently tucked

inside the wings alongside the helm and companion seats, while an optional tackle box and cooler/dunnage box can be installed aft of the seats, secure and convenient without getting in the way.

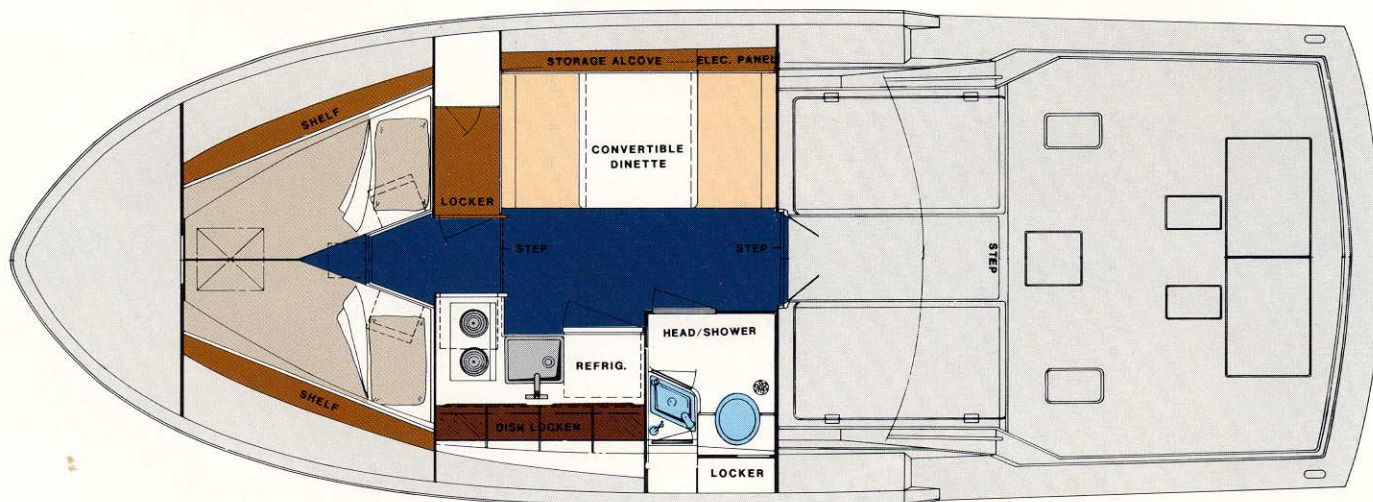
The 32 Flybridge Sport Fisherman's spacious flying bridge puts you on top of all the fishing action. It offers a complete console control station placed for maximum visibility all around the boat, plus a standard helm seat. Athwartships seating forward of the console welcomes members of your cruising party, and there is a forward raking windshield and sturdy grab rail all around the bridge.

The complete control station of both 32s feature standard extras you expect only from Hatteras, such as hydraulic steering and the Hatteras Systems Monitor with visual and audible alarm for engine water temperature, oil pressure, drive-oil pressure (diesel power only), exhaust temperature and discharge of the standard automatic fire extinguishing system.



Hatteras Could Build Them.

The 32 Flybridge Sport Fisherman



Below, both models offer maximum livability in a fully-carpeted cabin with generous amounts of hand-crafted natural woods. To port is a stand-up head with curtained shower, electric toilet, linen locker and medicine cabinet. And also standard is the pressurized hot and cold water system.

The galley beats anything in its class with good counter space, storage drawers, two large lockers (with one sized for a microwave oven), four dish /utensil storage units with hinged plexiglass covers, and AC/DC refrigerator and two burner stove — all standard. To starboard is a wide, convertible dinette with storage and under-seat space for the optional air conditioning unit. Outboard of the dinette is a storage alcove with sliding plexiglass doors housing panels for the 12V DC and 120V 30 amp AC electrical systems complete with magnetic circuit breakers and ground fault protected receptacles. AC power is supplied by transformer-connected shoreline or optional 4 kw generator.

The forward vee-berth area is open to the galley/dinette for spaciousness, yet separated by the galley divider and hanging locker. Six drawers under the berths and shelves port and starboard provide storage space.

RUGGED. Solid, no-compromise construction has been the Hatteras standard ever since we pioneered the design and production of fiberglass sport fishing machines. And the Hatteras 32s are no exception. Their fiberglass hulls are designed to handle those blue water conditions you expect when hunting for the big ones.

Above the fiberglass hull's upper

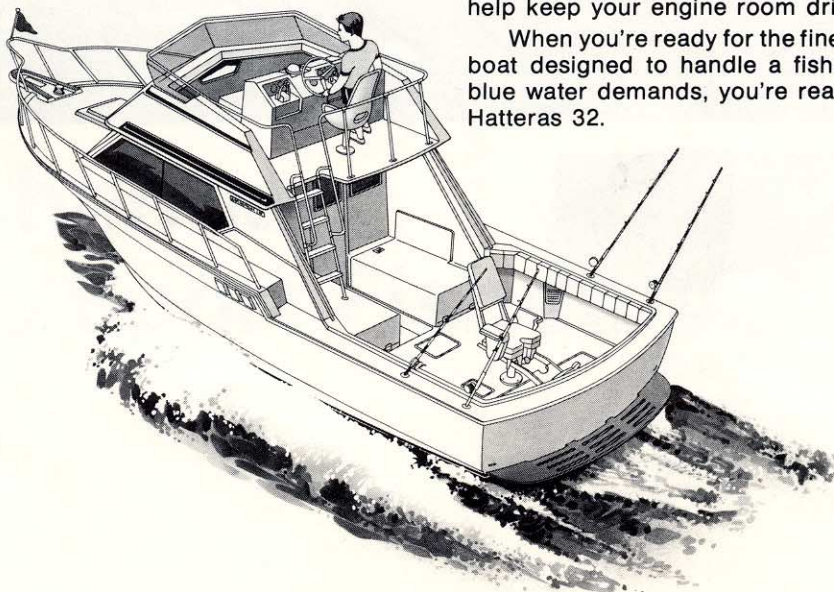
chine the hull is constructed of rigid fiberglass with a thick balsa core for reduced weight and maximum stiffness. Below the waterline the hull is solid fiberglass. Fiberglass longitudinal stringers and strategically placed athwartship stiffeners filled with high density polyurethane foam provide extra-tough strength and load distribution. Bolted to the stringers, the Hatteras custom aluminum engine mounts provide a solid bed for the 32's power packages. And that's just the beginning.

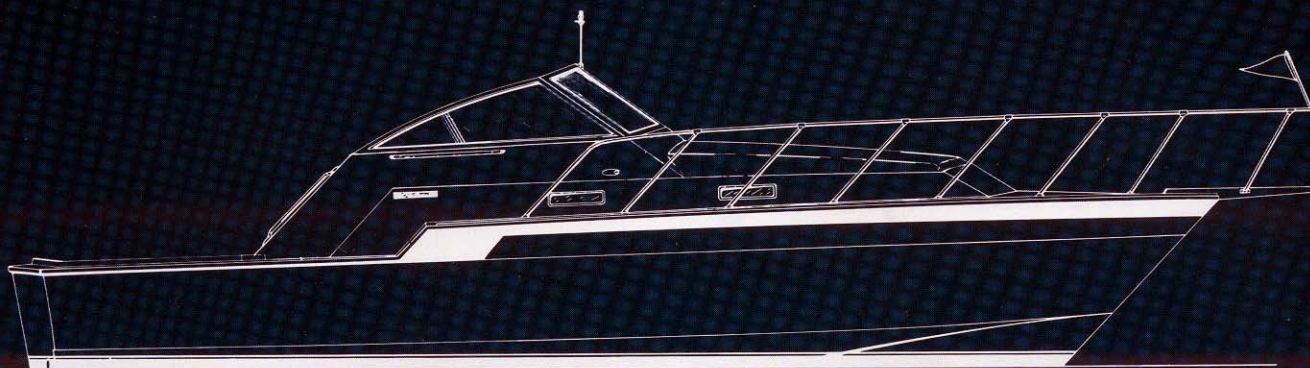
Our unique hull to superstructure bonding system features a cap joint that

is secured with stainless steel fasteners and laminated with fiberglass for a permanent fit. Our fiberglass U.L. approved tanks, bedded in closed-cell polyurethane foam, reduce condensation and maximize space usage compared to metal tanks. The state-of-the-art electrical system features color-coded and individually numbered wiring to electrical panels built and secured to U.L. approved standards, while all bulkhead pass-throughs are designed to minimize chafing of wire harnesses.

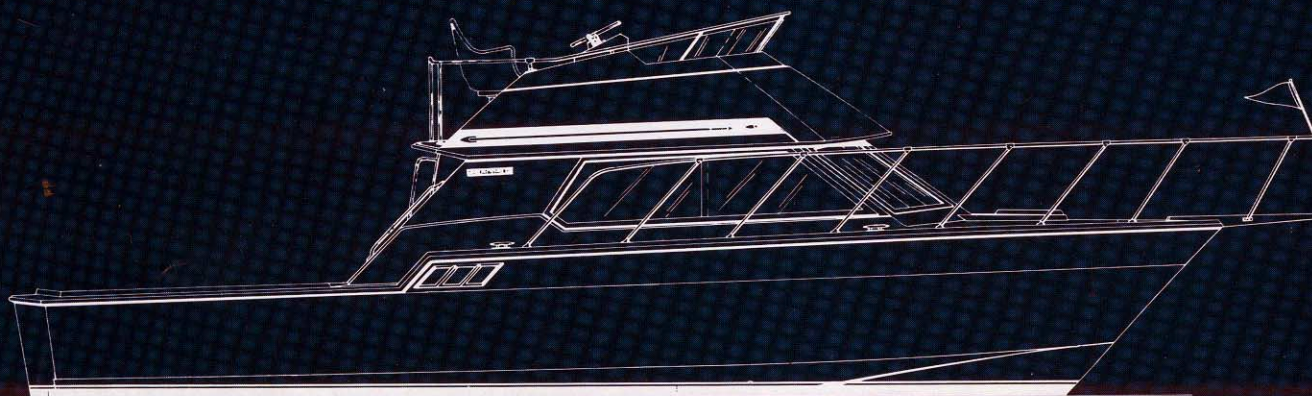
Other standard features include bottom paint, a freshwater cooling system protected by sea strainers, sea valves on all underwater through-hull fittings, 1½" stainless steel prop shafts, two banks of heavy-duty marine batteries with paralleling system plus additional air intakes located under the cockpit coaming to help keep your engine room drier.

When you're ready for the finest, for a boat designed to handle a fisherman's blue water demands, you're ready for a Hatteras 32.





32 SPORT FISHERMAN



32 FLYBRIDGE SPORT FISHERMAN

PRELIMINARY SPECIFICATIONS

Engines: Twin Caterpillar 3208T Diesel Engines or Twin Mercruiser 340 Gasoline Engines			
Length Overall	32'8"	9.60 m
Beam	12'0"	3.66 m
Draft	2'0"61 m
Freeboard Forward	4'10"	1.47 m
Freeboard Aft	2'6"76 m
Headroom Most Areas	6'4"	1.93 m
Fresh Water Capacity	50 gals	190 ltr
Fuel Capacity	265 gals	1,000 ltr

AMF

Hatteras Yachts

High Point, North Carolina 27261 U.S.A.

32SF/FBSF 7.5 982
Printed in U.S.A.

AMF Hatteras Yachts reserves the right to make styling, design, equipment and construction changes without notice. Also, prices are subject to changes without notice. Some items shown may be optional. Hatteras is a registered trademark of AMF Incorporated. © 1982 AMF Incorporated