

**The new fiberglass Hatteras 34 Convertible**





# The new fiberglass Hatteras 34 Convertible





# le is designed to please husband and wife

The convertible cruiser is actually two boats in one, a boat for the wife and a boat for the husband. For the wife, its spacious deckhouse and uncluttered cockpit provide room for activities. With accommodations for 4, it can sleep 6 with optional upper and lower bunks. It is easy to clean, has ample storage space, and an efficient, well-equipped galley.

For the husband, with addition of fighting chair and other optional fishing gear, it con-

verts into a blue-water sportfisherman. It cruises at 22-25 miles per hour and is highly maneuverable.

This is a comfortable boat. Fiberglass permits a hull shape which virtually eliminates pounding, yawing and broaching. Tests prove reinforced fiberglass is the strongest material available for marine construction. The Navy has used it since 1947, and now has more than 1200 fiberglass boats in service.







Deckhouse, looking forward, showing the optional curved sectional in lieu of the standard dinette. Bar and ice-maker are optional. In standard arrangement, this location is occupied by inside controls.

Mealmaking is fun with an efficient, well-equipped galley. Includes 3-burner electric stove with oven. Full 10 cu. ft. electric refrigerator. Hot and cold running water. Ample storage room for food, dishes, glasses. 110 volt outlets for appliances.



## Boatkeeping is easier than housekeeping







Looking aft in deckhouse. The Hatteras has more interior space because of its molded fiberglass construction. There are no seams, ribs or frames. *All* the interior is usable. With large windows, well-lighted deckhouse becomes a cheerful family center.

Bow stateroom bunks have polyfoam mattresses and cushion. 110 volt outlet. Storage drawers, cabinets, hanging locker. Cabinet work is hand-finished Philippine mahogany, with fine detailing by High Point, N.C. furniture craftsmen.



## ping on this new fiberglass Hatteras



Vinyl floors, plastic surfaces, and wipe-clean fabrics make boatkeeping easier on the fiberglass Hatteras 34' Convertible.

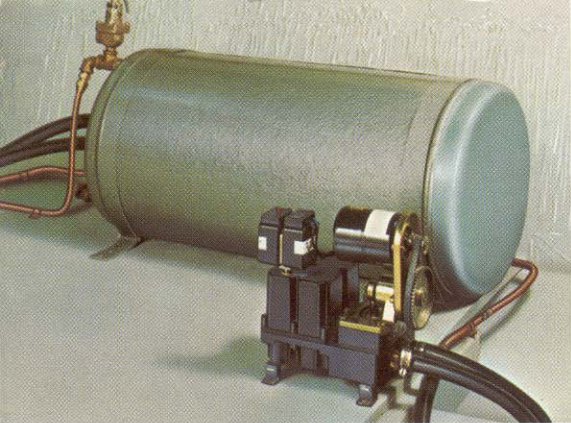
The Hatteras is also easier to maintain than wood boats because of its one-piece molded laminated fiberglass hull and its one-piece fiberglass superstructure. There are no seams or joints. There are no loose fastenings; no rust, dry rot, marine borers, caulking or sanding, either.

And you don't *have* to paint for protection. You *can* paint for appearance, if you want.

The head has two storage cabinets, medicine cabinet with mirror, lavatory and full-size shower. Screened portlight. 110-volt outlet.





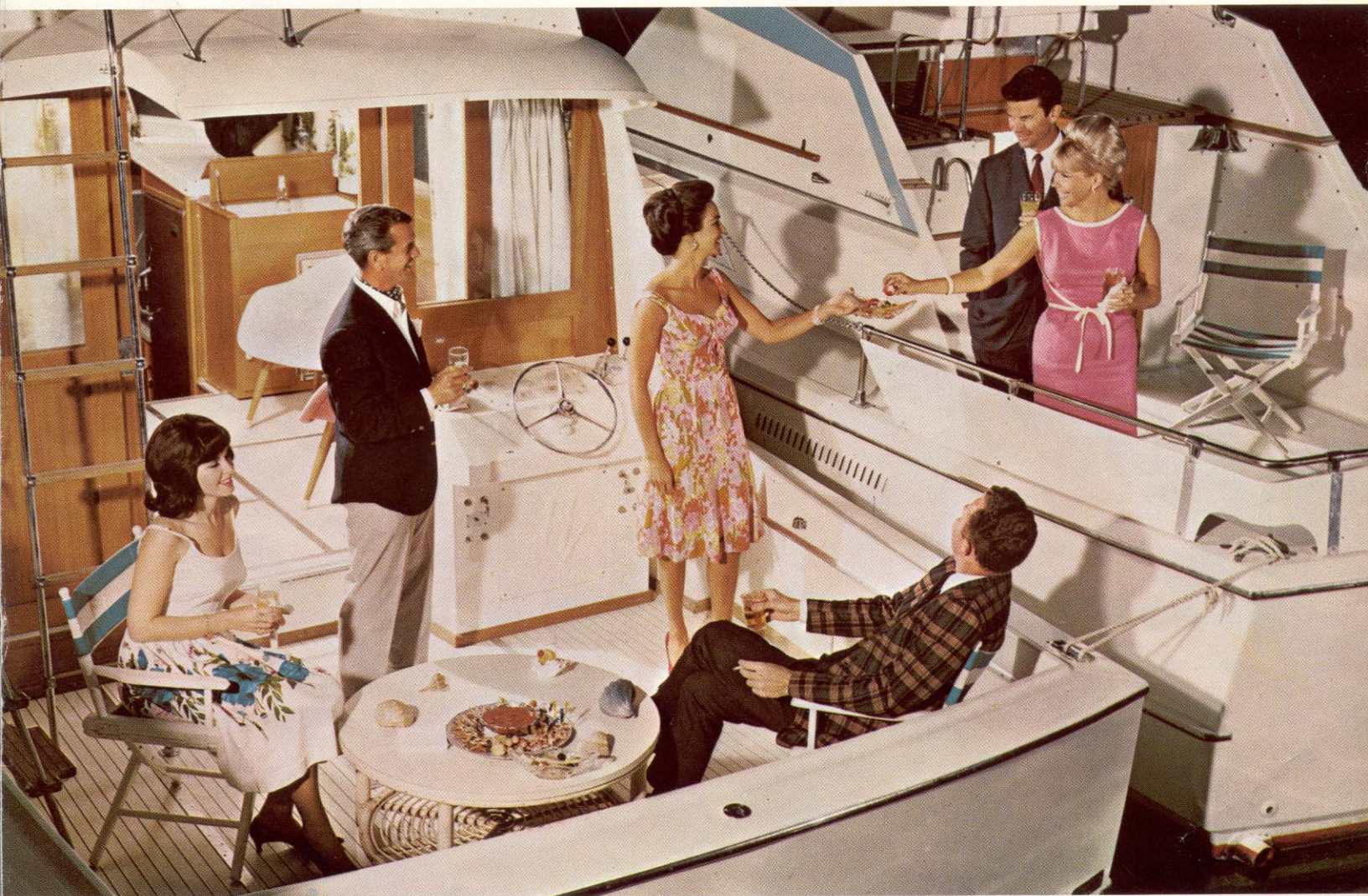


Hot water tank and pressure pump assure adequate hot water for modern living afloat—dishwashing, showers, shaving, etc.

The last word in yacht safety and electronics—the Hatteras Master Electric Panel. Provides central control and protection of both 12-volt system and 110-volt A.C. Instruments indicate voltage input from shore line or generator, current being used, condition of battery. Includes circuit breakers and master switches to protect all circuits.



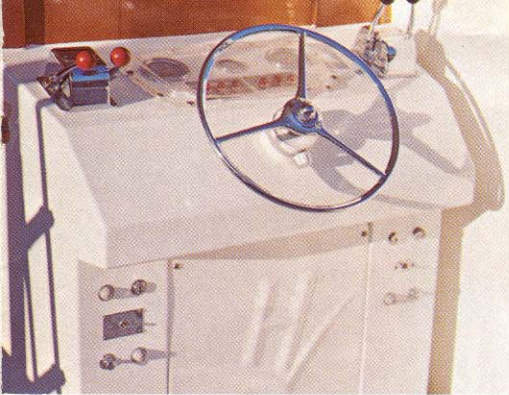
## Just a few of the construction features that m



It's always a party when boats tie-up together. Note the roominess of the Hatteras 34' Convertible's big cockpit. It's great for entertaining—and it's great for fishing, too, with the addition of fighting chair, gin pole, etc. The cockpit

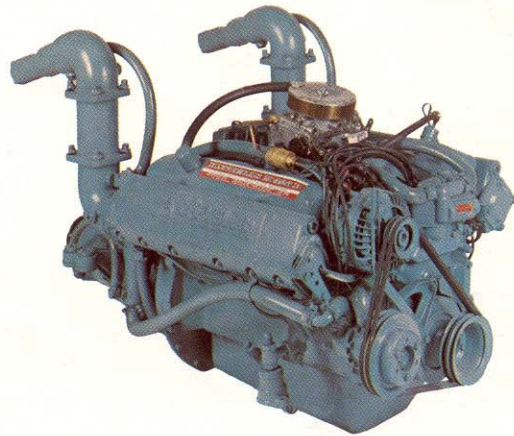
controls are an option for the fisherman, and are in lieu of inside deckhouse controls. The Hatteras 34' Convertible is, at the same time, a boat for the woman and a boat for the man.





The Hatteras 34' Convertible has both an outside, flybridge control station and an inside deckhouse control station (standard). Each has Morse controls, complete control panel with gauges and switches for twin-engine operation. Fuel gauges are standard. Lower control tachometers have hour meter. Picture shows optional cockpit controls.

Blower to keep enclosed engine area free of fumes is standard equipment on all Hatteras boats.



Standard power for the 34' Convertible is provided by twin 290 H.P. gasoline engines. There is also an option of twin G. M. 4-53N Turbo Diesel Engines.

## Make Owners so proud of their Hatteras Yachts

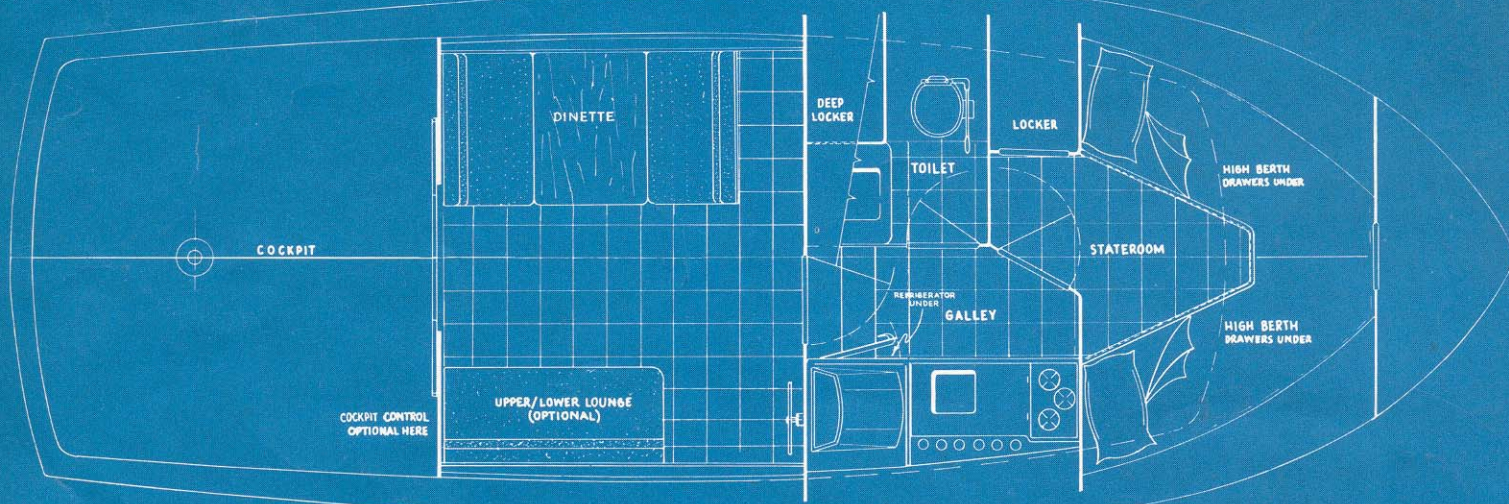
The Hatteras was originally created by *boat owners*—sportsmen and industrialists—who wanted a better boat than they could find in the market, and who decided to build the kind of boat they would like for themselves.

The designer, J. B. Hargrave, was demanding too . . . Hargrave's business is designing yachts costing \$250,000

and up, and he is not one to compromise.

The Hatteras is constructed to the fiberglass standards set by Gibbs & Cox, marine architects and engineers, who designed the superliner S.S. *United States*.

Naturally, the Hatteras includes many fine features not found on other boats. And most of these are *standard*.



*Specifications subject to change without notice.*



***Hatteras  
Yacht  
Company***

*HIGH POINT, NORTH CAROLINA*

