



AMF
Hatteras

36 Convertible
36 Sport Fisherman

The New Hatteras 36 Sport Fish

New From The Keel Up To Give

These great new boats from Hatteras are designed to provide the avid gamefisherman and the experienced cruising family with new boating enjoyment in the 36 foot class. Here is the continuation of the classic styling and superior seacraftsmanship that have earned Hatteras the reputation as the mark of the great sea boats. Here also is fresh design and new technology that ensure your enjoyment of boating today and for years to come.

To begin with, we worked in close collaboration with noted naval architect Jim Wynne to provide a unique hull shape. Of constant deadrise, modified-vee design, it features a deep, wave-slicing forefoot, a shallow full-length keel for open water tracking, and longitudinal strakes for quick lift. A good balance of speed and efficiency is provided by twin 300 shaft horsepower gas or diesel engines, with added punch available from twin 390 diesels.

The result is a 36 footer with exceptional stability, dryness and agile handling.

HATTERAS 36 SPORT FISHERMAN

If the exhilaration of a rugged, open style fishing boat with comfortable interior amenities is your interest, the new 36 Sport Fisherman is right down your alley. The 110 square feet of cockpit is laid out with the died-in-the-wool fisherman in mind: thigh-high coamings all around, fiberglass sole set just above the waterline and completed with non-skid finish for sure footing. There's a wide transom gate as well as air intakes under the coamings to help keep the engine room drier.

An all-fiberglass upper cockpit offers an elevated, semi-enclosed platform for the fully-instrumented control station with standard helm seat. A large, wrap-around ventilating windshield protects from wind and spray.

Features abound, like: 120 VAC and 12 VDC electrical systems, generator with soundshield, pressure hot and cold water systems, automatic battery charger and an

automatic engine room fire extinguishing system. There's even the Hatteras Systems Monitor which provides visual and audible warning for high engine coolant temperature, low engine oil pressure (diesel models only), high exhaust and drive oil temperature and discharge of the engine room automatic fire control system.

In short, you get a Hatteras. A boat that won't skimp on a boat's necessities. Add the electronics of your choice, your fishing gear and the 36 is ready for action.

Below, generous interior accommodations include a private stateroom that sleeps two, complete galley, convertible dinette, plus head with stall shower.

The bow stateroom is enclosed for privacy and features vee berths with storage under, a hanging locker and additional locker space.

The galley includes a two-burner stove with drawer storage below, space for installation of a microwave oven, a spacious galley counter with stainless steel sink and a combination AC/DC refrigerator/freezer located for convenient access from the cockpit as well as the galley. To starboard, the convertible dinette offers drawers in the dinette platform, plus additional storage under the dinette seats and outboard in an alcove locker.

The complete head has an electric toilet, sink, linen locker and separate, stand-up stall shower.

Convenient engine room access is also a feature of the new 36 Sport Fisherman. A large centerline hatch in the upper cockpit sole is hinged forward to provide easy entry between the engines.

HATTERAS 36 CONVERTIBLE

Imagine the durable seacraftsmanship of the 36's hull combined with the advantages of a Hatteras Convertible design: giant cockpit, comfortable salon, full galley and your choice of one or two staterooms. Whether you're interests are in a fisherman's full-fledged big game hunter or a reliable family boat for offshore fishing and cruising,

you'll probably find what you need in the 36 Convertible.

Like the 36 Sport Fisherman there's a cockpit so big it can even handle a fighting chair. Its non-skidded fiberglass sole is set low to the water to provide easy boarding through the 30" wide transom gate.

If you and your fishing party need a spacious fly bridge, the 36's is the largest of any in this size boat. With an aft helm for good visibility all around — including down into the cockpit — there's room forward for a comfortable bench seat as well as cavernous storage. The entire bridge is ringed with a sturdy stainless steel handrail for added security underway.

Stepping inside through the teak, sliding door you enter a world of quiet, comfortable luxury. Standard features include carpeting, draperies, natural wood panelling and tinted safety glass windows. On the forward lower level is a galley complete with range, oven, refrigerator/freezer and loads of cabinet storage.

Also below is the bow stateroom with wide vee berths having storage underneath, a lighted hanging locker, an overhead ventilating hatch and carpeting throughout. The nearby head has an electric toilet, sink with large counter area, a stand-up stall shower with seat, exhaust blower, medicine cabinet and linen locker.

An optional floor plan provides a second stateroom below and a galley in the salon.

The additional carpeted stateroom in the deckhouse galley layout features upper and lower berths with storage under the lower berth, a built-in dresser with drawers, a lighted hanging locker with drawers below and a ventilating portlight with drapery.

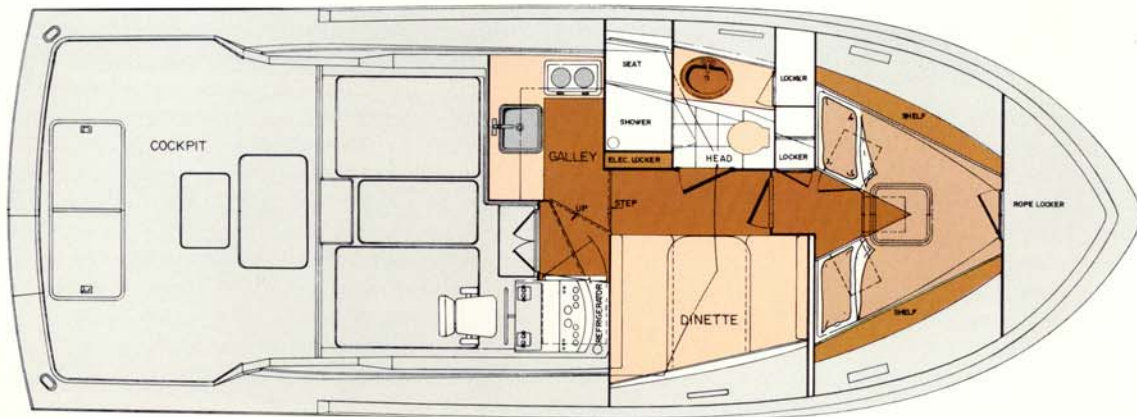
And like the 36 Sport Fisherman, an abundance of standard features and thoughtful design assure you of years of enjoyable boating.

For the full story on the great new 36 Sport Fisherman and 36 Convertible step aboard. Your Hatteras dealer can start you into a new world of boating enjoyment.

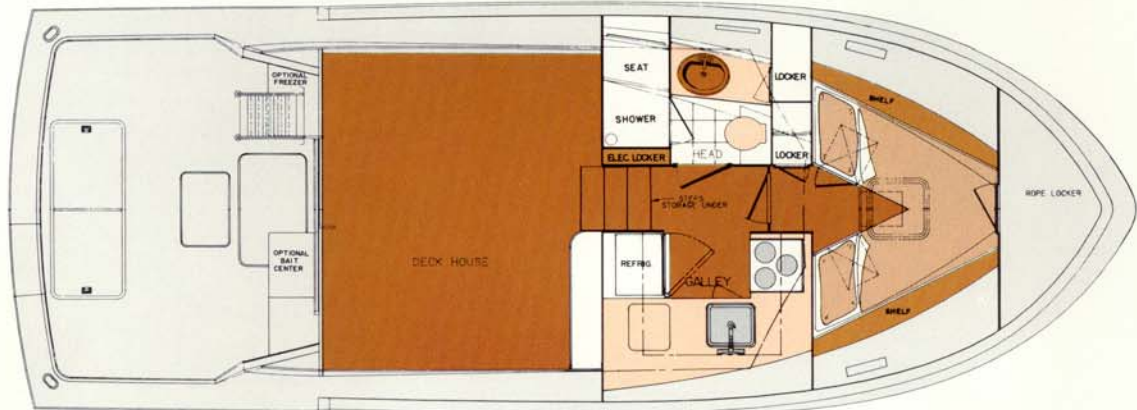
sherman And 36 Convertible

Give You New Boating Enjoyment

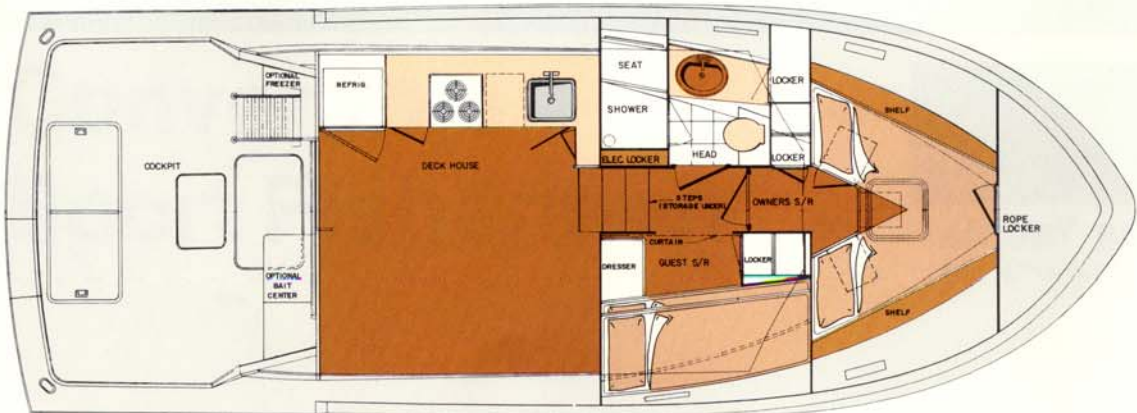
Thirty-Six Sport Fisherman



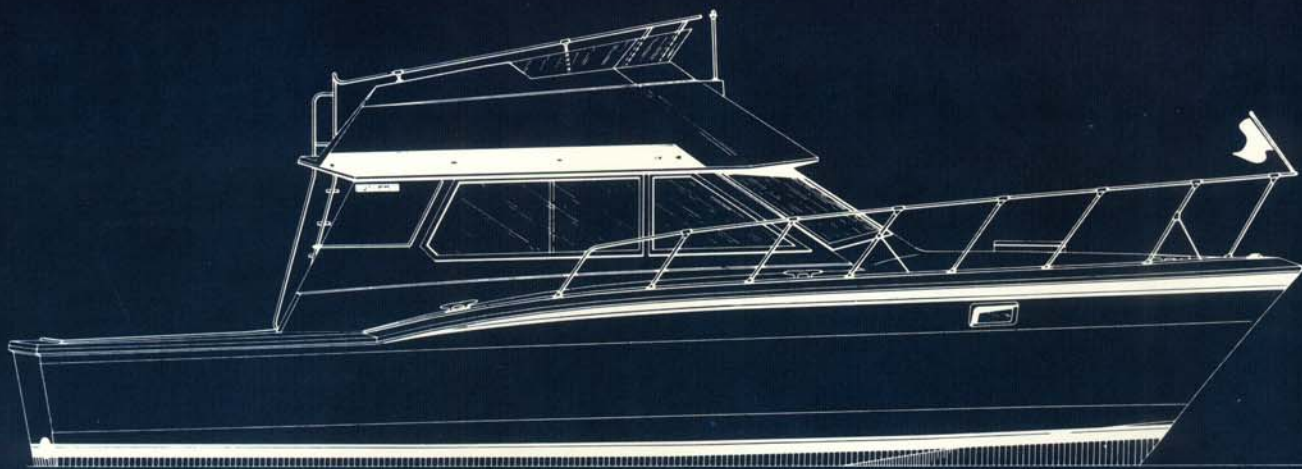
Thirty-Six Convertible



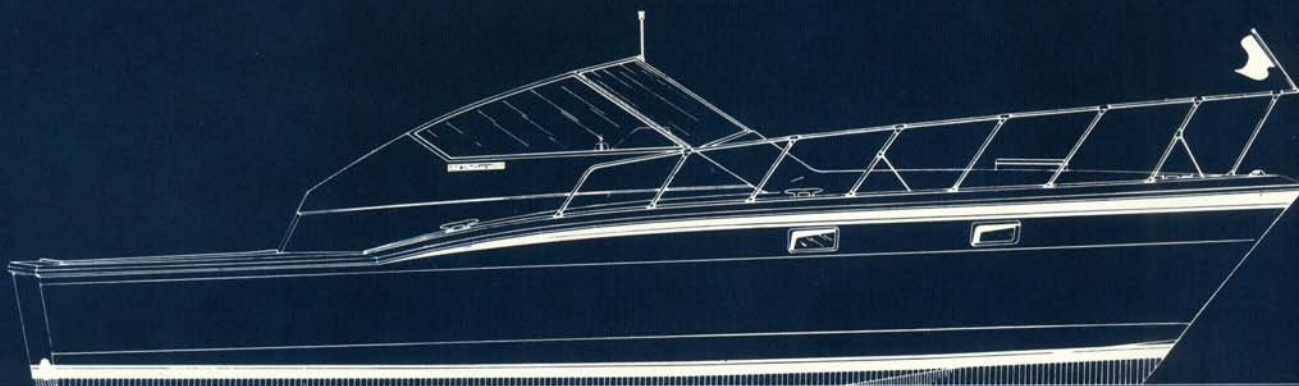
LOWER GALLEY ARRANGEMENT



DECKHOUSE GALLEY ARRANGEMENT



Thirty-Six Convertible



Thirty-Six Sport Fisherman

PRELIMINARY SPECIFICATIONS

Length Overall	36' 6"	11.13 m
Beam	13' 7"	4.14 m
Draft	3' 9"	1.14 m
Freeboard Forward	5' 7"	1.70 m
Freeboard Aft	3' 4"	1.02 m
Headroom Most Areas	6' 5"	2.00 m
Fresh Water Capacity	124 gals	510 ltr
Fuel Capacity	350 gals	1,325 ltr
Weight Displacement (<i>Convertible</i>)	29,000 lbs	13,150 kg
Weight Displacement (<i>Sport Fisherman</i>)	27,000 lbs	12,250 kg
Overhead Obstruction		
Clearance Required (<i>Convertible</i>)	12' 6"	3.81 m
Overhead Obstruction		
Clearance Required (<i>Sport Fisherman</i>)	9' 3"	2.82 m

AMF

Hatteras Yachts

High Point, North Carolina 27261 U.S.A.

36C/SF 7.5 183
Printed in U.S.A.

AMF Hatteras Yachts reserves the right to make styling, design, equipment and construction changes without notice. Also, prices are subject to changes without notice. Some items shown may be optional. Hatteras is a registered trademark of AMF Incorporated. © 1983 AMF Incorporated