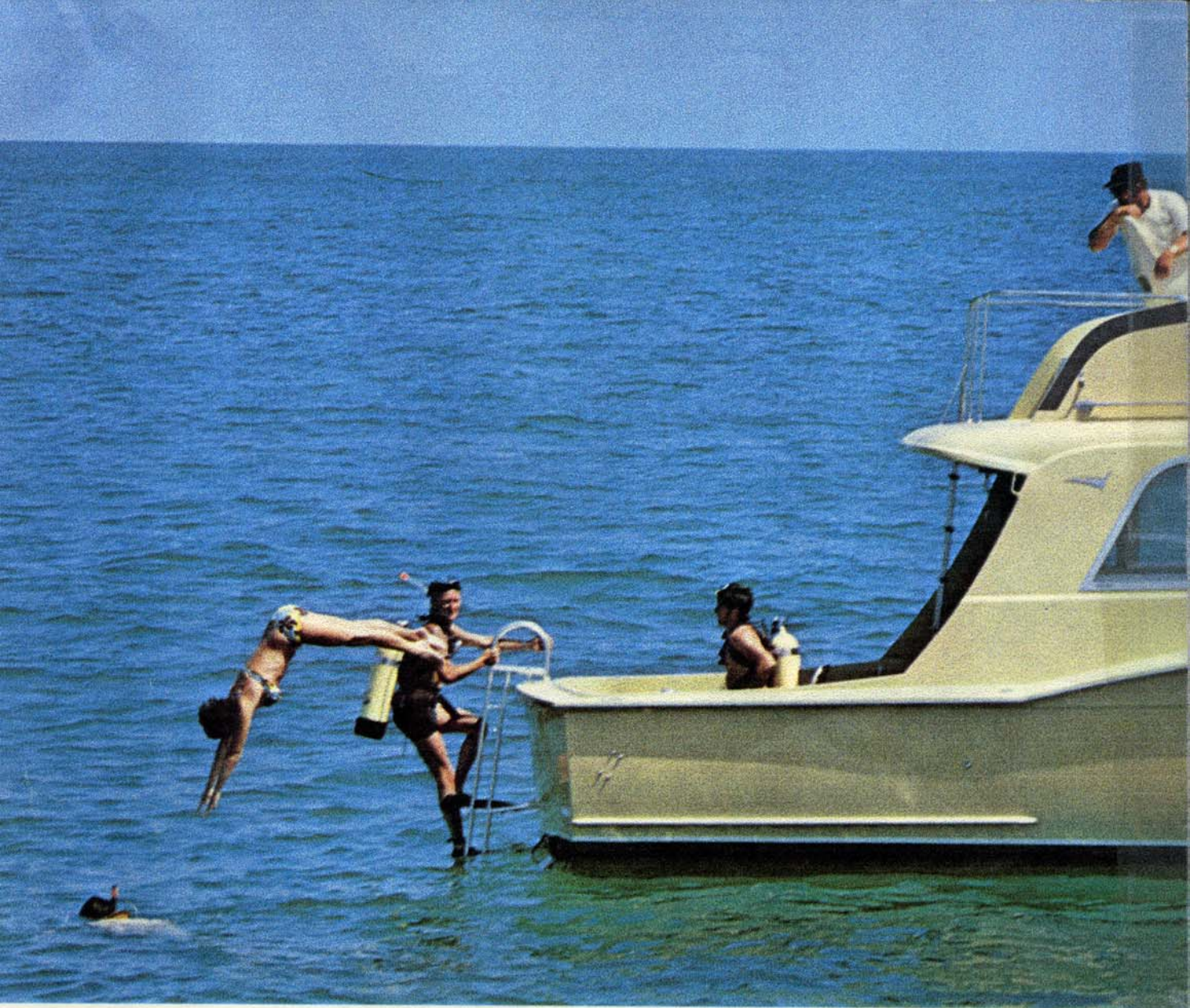


The fiberglass Hatteras 36 Convertible





You can have a lot of with a fiberglass Hat

Happiness is being out on the water together, with your family or with friends, no matter what the boat.

But happiness is really multiplied with this new Hatteras 36 ft. Convertible. Because this boat was designed primarily to please both wife and husband at the same time.

For her it's a delightful cruising boat with many extra comforts, including a spacious deckhouse salon. For him installation of his fishing gear in the well proportioned cockpit makes it a fine deepsea sport fisherman.

Happiness is a real good galley

Galley equipment includes a three-burner electric stove with oven and rotisserie, exhaust blower; a 10 cu. ft. electric refrigerator with a freezer unit.

Plus:

Stainless steel sink with hot and cold pressure water; vinyl flooring; 110-volt fluorescent light; storage lockers, including one with a damp chaser; dish locker; glass rack.

You'll find many of the comforts of home aboard.

She sleeps four with curved sectional lounge in the deckhouse.

She can sleep six with addition of

optional lounge that converts to upper and lower berths. There are two Vee berths with polyfoam mattresses in the bow stateroom.

And there's plenty of storage space in lockers and drawers. Duplex 110-volt outlets are convenient throughout the yacht for electrical appliances.

Happiness is a stall shower

Yes, it's unusual on a 36 footer. A hot and cold water shower in a man-size stall with door.

There is also a medicine cabinet with a mirror; linen locker; vitreous



f fun and happiness Hatteras 36 Convertible

china lavatory; and waterproof vinyl fabric on bulkheads.

You won't find the Captain lonely at his flying bridge controls. This station has a large seating area cushioned with vinyl covered polyfoam.

The flying bridge and deckhouse controls are fully instrumented.

Happiness is more room

The Hatteras fiberglass construction requires a minimum of beams and ribs. This provides more usable interior space—for people and for storage.

This is a dry, comfortable boat. It handles easily at all speeds and in

rough seas. The molded fiberglass hull shape reduces pounding, yawing and broaching.

And fiberglass makes it a safer boat.

The one-piece Hatteras molded hull of resilient fiberglass takes the shock of heavy seas better than most boats built of traditional materials.

Happiness is easy maintenance

A nice thing about the Hatteras is its maintenance: it's easy and economical. There are no hull seams or joints in the one-piece fiberglass hull.

There's no sanding or caulking,

no worries about marine borers.

You never have to repaint for protection. You can repaint for appearance, if you wish.

Happiness is higher resale value

Hatteras does not plan obsolescence by making yearly models. This, plus fine design and durability, protects your investment.

North American Rockwell product

Hatteras is part of North American Rockwell. This means that every Hatteras is backed by a strength and technological capability unequaled in the marine industry.



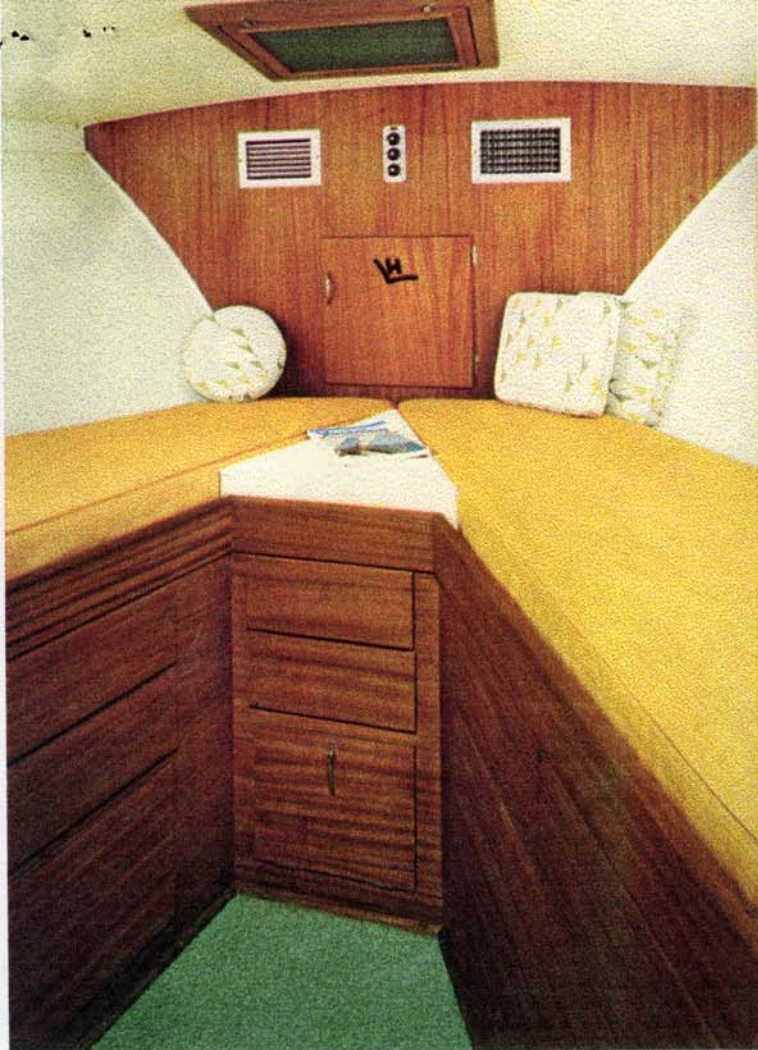
The deck house is spacious with plenty of light. The port and starboard windows are sliding screened type. The windshield is large providing excellent visibility for both general viewing and for a skipper at the lower controls in the forward starboard corner of the salon. The total window area in the salon is 82 sq. ft. Headroom averages 6'3" throughout the yacht; the beam width from window to window is 8 ft. and from the aft bulkhead to the windshield is 11'9". In aft port corner is a hanging locker with 8½ cu. ft. storage space. A drawer beneath has 1¼ cu. ft. storage.

The curved sectional lounge converts to a full double bed (as shown below). The optional Hi-Lo table shown above serves as a coffee table or can be raised to make a full dining table. For additional seating and sleeping purposes there is available an additional lounge that converts to upper and lower berths. There are 110-volt outlets for accessories. This spacious well-lighted deck salon becomes a cheerful family center.

Above at the right, behind the chair, can be seen the wheel of the interior control station. (See back page of folder for closeup view of this unit.)

Shown below is the optional entertainment center that has an ice maker with bottle and glass storage for convenient serving.





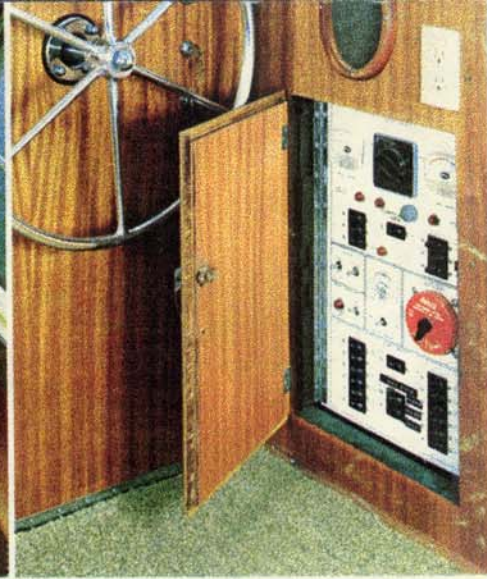
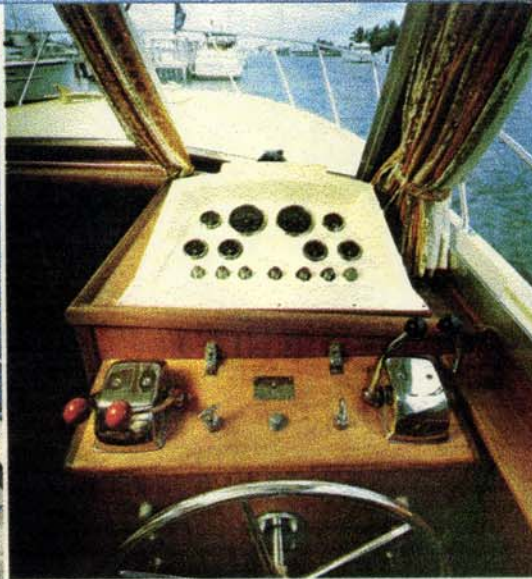
The bow stateroom has two 6 ft. bunks with polyfoam mattresses and cushions. A rope locker forward has over 44 cu. ft. of storage space. There are two drawers beneath each bunk and 2 drawers in the "Vee" area where the 2 bunks meet forward. These drawers have over 5 cu. ft. of storage space. Also, the lockers beneath the drawers under the bunks provide an additional 14½ cu. ft. of storage space. There is an overhead screened hatch and port light on each side. There is a duplex electrical outlet for accessories. There is also a light over each bunk. Shown in the forward bulkhead are the air conditioning outlets which are optional.



Meal-making is fun in the efficient, well equipped galley. The electric stove has 3 burners and oven with overhead exhaust blower. There is also a 110-volt duplex outlet for appliances. The stainless steel sink is provided with hot and cold water pressure system. The electric refrigerator is a 10 cu. ft. unit. In the bulkhead behind the counter is storage space of 3½ cu. ft. which includes the glass rack. The 3-door locker above the counter has 5½ cu. ft. of storage space with one section damp proofed to keep salt, sugar and crackers fresh. Beneath the sink is 8¾ cu. ft. of storage space with 1 shelf. Also, there is 1 drawer beneath the stove. There is storage space in the steps up to the deckhouse.



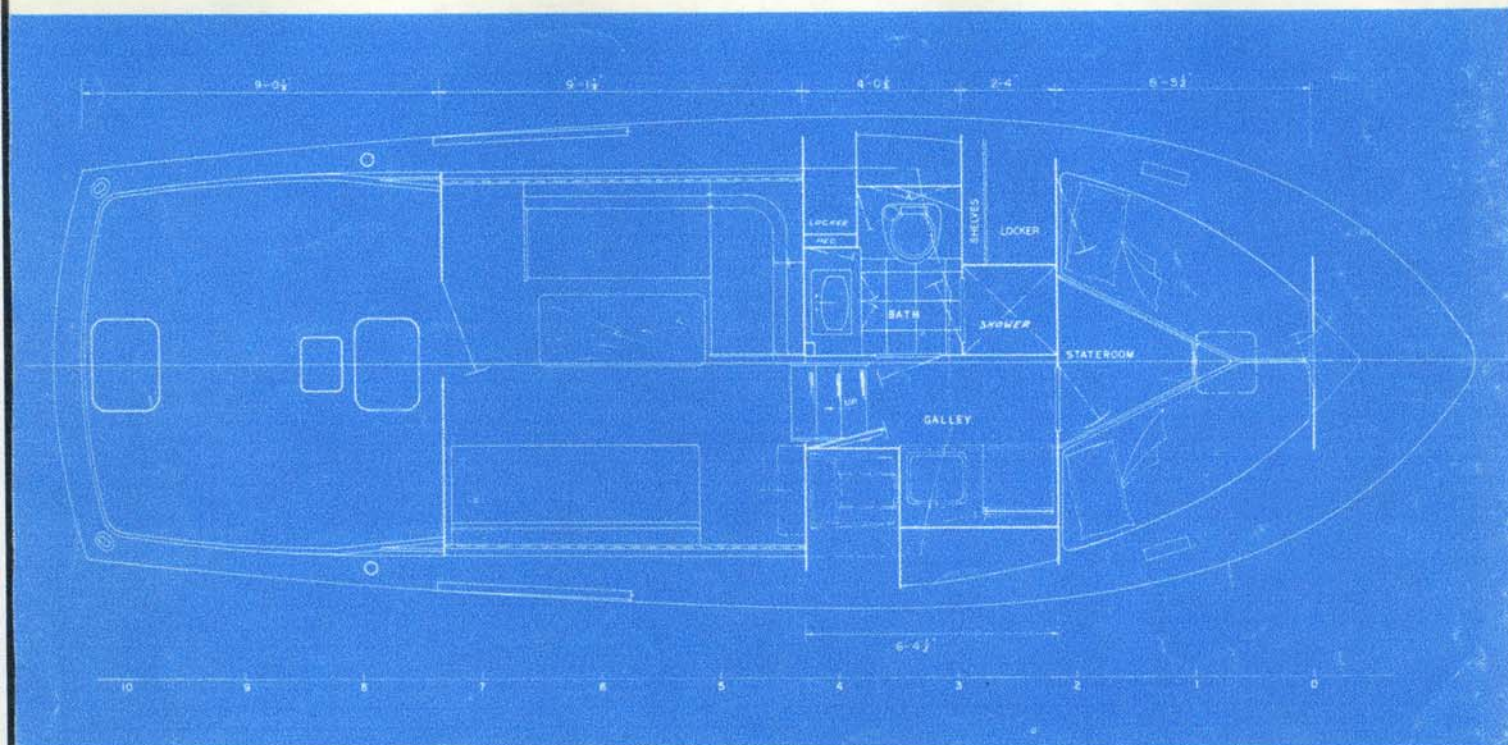
The head is a bathroom. There is a vanity with lavatory, 12-volt light, 110-volt duplex outlet for accessories. Electric toilet. Medicine cabinet with mirror. Full size stand-up shower. There is 11½ cu. ft. of storage space in vanity base, one drawer and an outboard locker. There is access to a hanging locker which is also accessible from the bow stateroom. This locker has more than 25 cu. ft. of storage space.



This closeup view of the bridge shows the seating arrangement. This is a complete control station with dual controls and all necessary gauges.

The control station in the deckhouse has all necessary instruments and switches. The full view windshield is equipped with a windshield wiper.

Hatteras Master Electric Panel provides central control and protection for both 12-volt and 110-volt. All circuits have circuit breakers and master switches. Switches for generator and battery charger circuit. Indicator for battery condition.



(Some items optional)

Hatteras Yacht Division, North American Rockwell, High Point, N.C. reserves the right to make styling, design and construction changes without notice. Also, prices are subject to change without notice.



Hatteras Yacht Division
North American Rockwell