



AMF

Hatteras

**38 Flying Bridge
Double Cabin**



This new 38-foot Flying Bridge Double Cabin Hatteras gives you a more versatile yacht and more luxurious accommodations than most yachts of greater length.

The Salon has more roominess than you would imagine. Sliding, screened windows on both port and starboard sides and the large 3-panel windshield the full width of the yacht provide advantageous viewing as well as supplying light and atmosphere. Beam width, window to window, is 9 ft. 6 in.; and from aft bulkhead to base of windshield is 14 ft. 7 in. with 6 ft. 4 in. headroom, creating a feeling of spaciousness. The control station in the salon is optional. There's storage in the port side paneling. A master electrical panel is conveniently placed in the aft bulkhead beneath steps down from aft deck. Optional entertainment center has ice maker and storage. 110-volt outlets for accessories. AM-FM stereo radio and tape player is optional. Recessed overhead lighting. Salon windows are tinted glass. You may choose your own decor from a selection of draperies and carpeting. Furniture of your choice is optional.

Galley is just 3 steps down, but convenient to salon so the hostess can be near her guests yet not having the effect of dining in the kitchen. Three-burner electric stove with overhead oven. Exhaust blower. Two-door 14.6 cu. ft. refrigerator and freezer. Spacious counters with high pressure laminated top. Stainless steel sink, hot and cold pressure water. Glass racks and storage lockers (approximately 16 cu. ft.). One locker has damp chaser. Overhead windshield provides light during daytime, fluorescent light for nighttime. 110-volt duplex outlets for appliances.





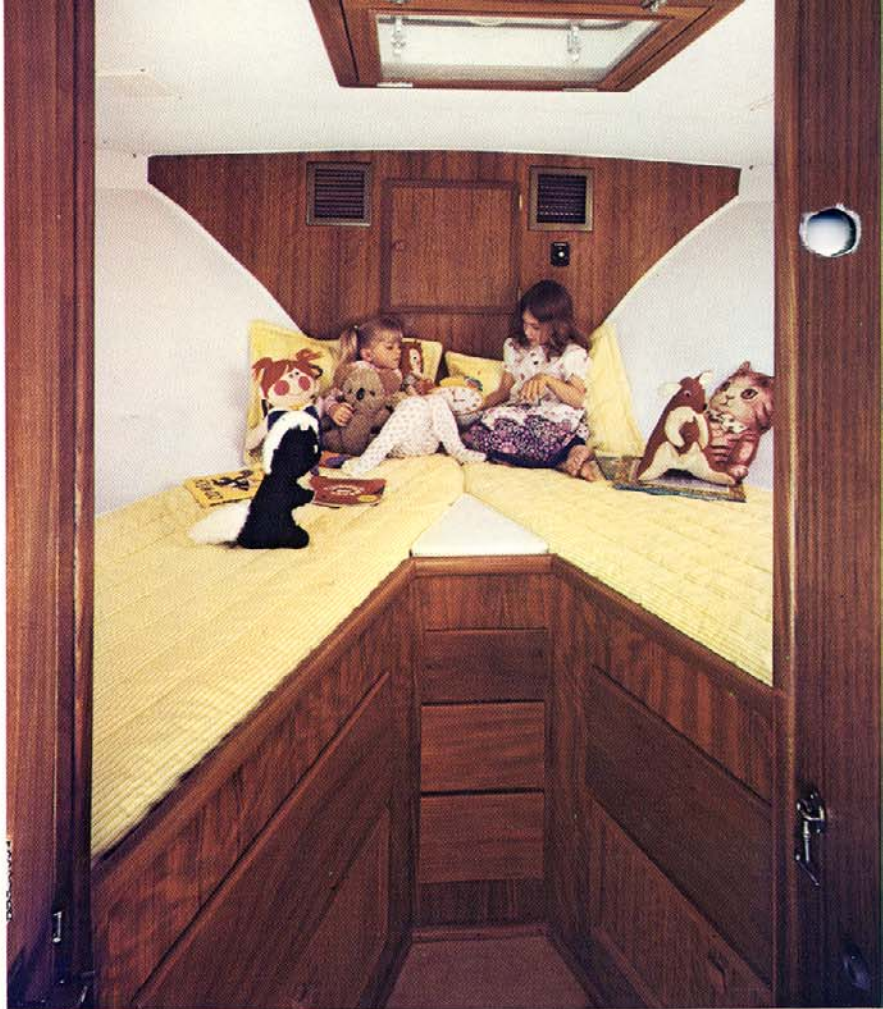
The Master's aft stateroom has two fore-and-aft berths—each 6 ft. 4 in. with comfortable foam mattresses. Wall-to-wall carpeting. Head room is 6 ft. 4 in. Two duplex 110-volt outlets. Bullet lights over the head of each berth. Recessed ceiling light. Screened overhead hatch. Hanging locker has 14½ cu. ft. of storage.

Screened portlights—two each, port, starboard and in transom above dresser. Built-in dresser has eight drawers (5½ cu. ft. storage). Above each berth are recessed bookcase shelves for handy storage. There are two lockers in companionway from salon—each with approximately 10 cu. ft. storage space.



Water head has private entrance. There is a stall shower with door and overhead light. Medicine cabinet with mirror. Fluorescent light. 110-volt duplex outlet. Exhaust blower. Electric toilet. Vinyl flooring. Vanity is 51 in. x 17½ in., vitreous china lavatory. Storage space beneath. Screened portlight.

Bow stateroom has two V-berths with comfortable foam mattresses. Screened overhead hatch and a screened portlight above both berths provide good ventilation. Rope locker provides generous storage area in addition to anchor gear. Three drawers in V-space between berths; drawers beneath berths as well as locker space provide approximately 18 cu. ft. storage. Hanging locker has 43 cu. ft. storage space. There is a 110-volt duplex outlet. Overhead dome light and light over head of each berth. Hullsides above berths are padded and vinyl covered for comfortable sleeping and easy maintenance.



Bow head has vanity with vitreous china lavatory and generous storage space beneath counter. Medicine cabinet with mirror and fluorescent light. 110-volt duplex outlet. Other features include; shower, exhaust blower, screened portlight and electric toilet. Vinyl flooring and waterproof vinyl fabric covered bulkheads for easy maintenance.

Photograph on right provides an excellent view of the yacht showing the spaciousness of the deck areas, the large flying bridge with control console and all necessary instruments and switches, and including lighted Constellation compass, dual lever controls and hydraulic steering. Cushioned seating along the bridge sides provides plenty of room for captain's companions who like to ride where the visibility is extensive. The skipper can navigate with confidence from this vantage point. An optional bimini top with side curtains can be used for foul weather protection.



This close-up view of the aft deck illustrates its spaciousness and advantages for entertaining . . . while underway . . . or at dockside. High pressure laminate dodgers and teak rails surround the deck for safety and low maintenance with rail gates port and starboard.

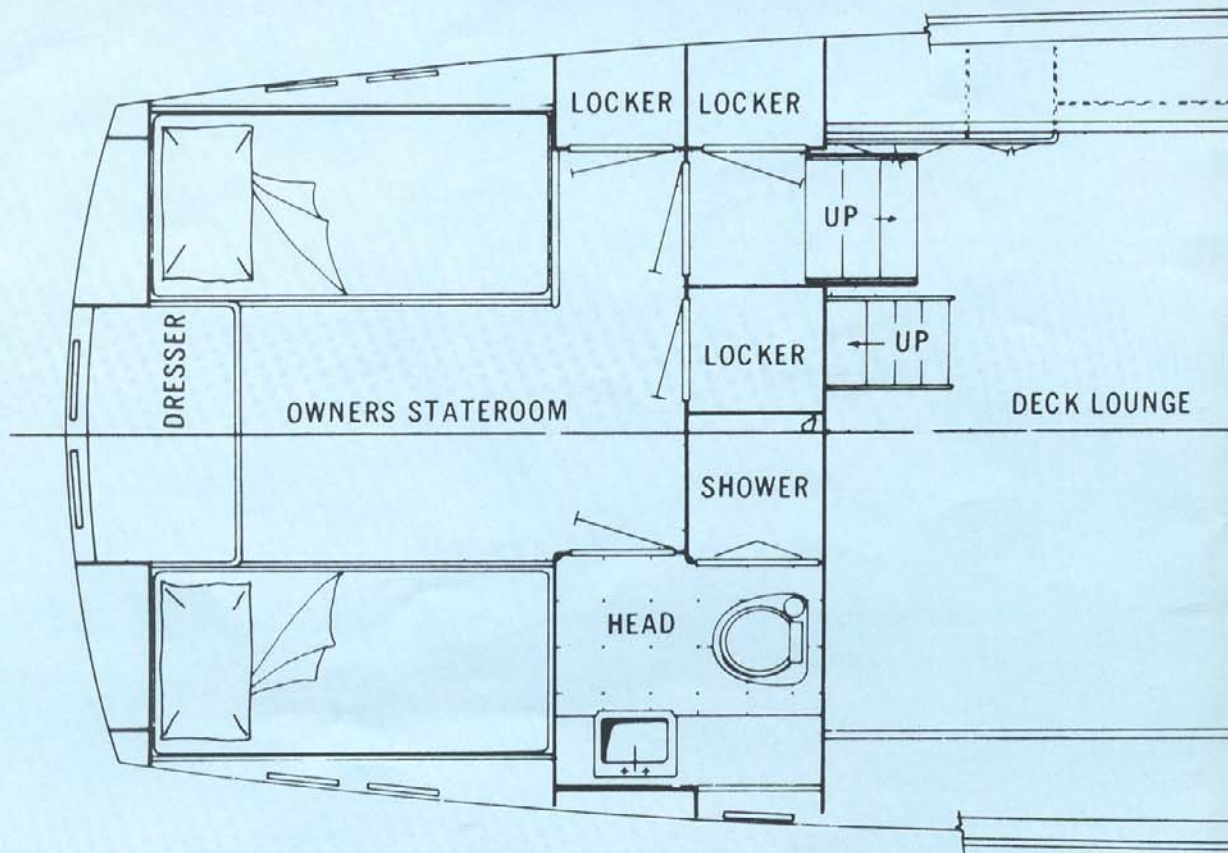


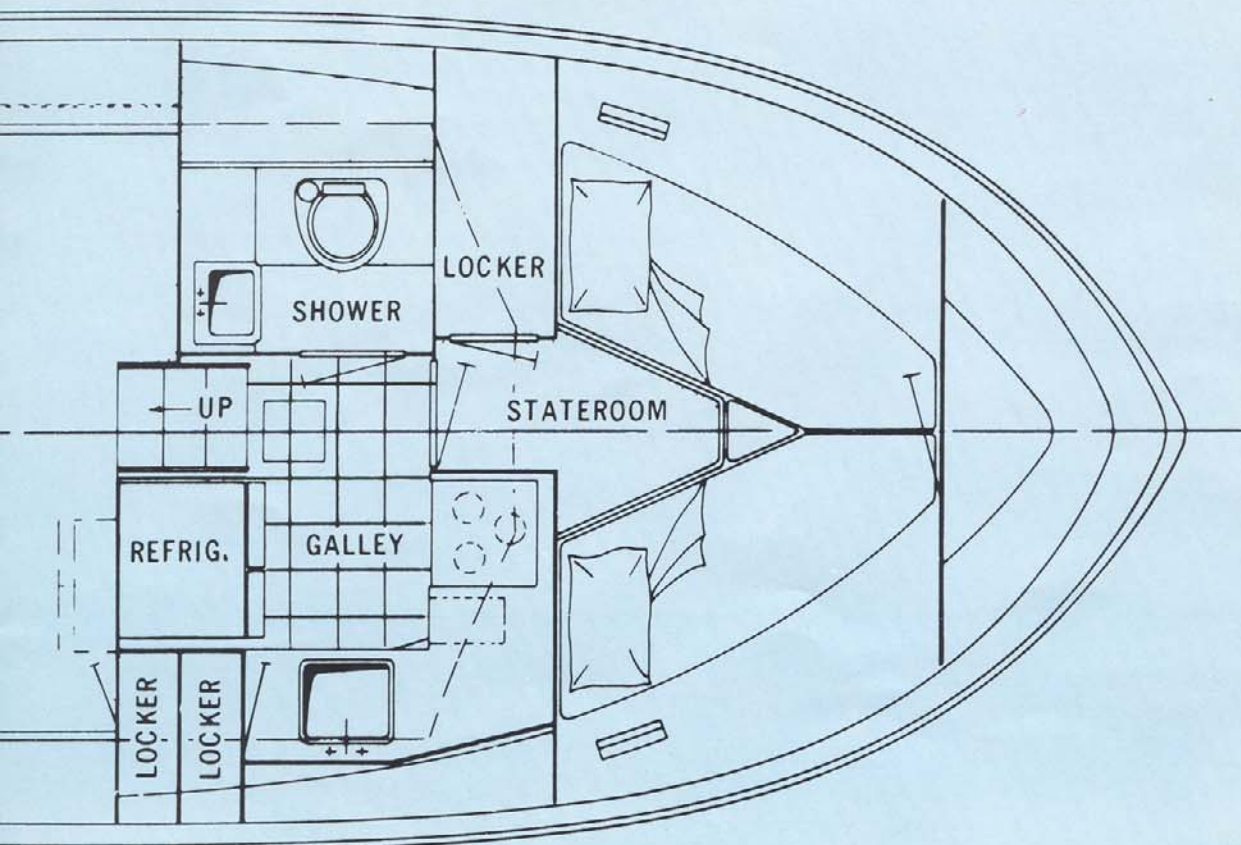
Convenience and safety is afforded by the optional teak wood platform and stainless steel ladder, ideal for swimming, scuba diving and dinghy handling.





Hatteras was the first large production-built power boat of reinforced fiberglass. Since it was first introduced in 1960, Hatteras has set the industry standard for fiberglass construction and performance. The new 38 Flying Bridge Double Cabin typifies Hatteras leadership in yacht design, engineering and reinforced fiberglass construction resulting in an easy riding hull that reduced pounding, yawing and broaching. Knowing yachtsmen have learned to rely upon Hatteras.





The above photograph gives you another close-up view of this new 38 Flying Bridge Double Cabin that provides you with more comfort, versatility and accommodations than many 40 foot and larger models. And with a Hatteras you have a protected boating investment.

There are three main reasons why a Hatteras maintains its value.

One: Hatteras does not make yearly models. The design is classic; there's no planned obsolescence.

Two: Fine engineering in hull design, mechanical systems, extra fuel and water capacity.

Three: Spacious interiors—more usable space—warmth of natural wood.



AMF Hatteras Yachts, High Point, North Carolina reserves the right to make styling, design, equipment and construction changes without notice. Also, prices are subject to change without notice. Some items shown may be optional.

3813 601 10
Printed in U.S.A.