
There's a new
way to join
a very
exclusive club:

The Family Plan.

Hatteras

Now that very same exclusive club offers you the benefits of a family plan. Its new design features and layouts offer your family even more of the joys of the Hatteras lifestyle.

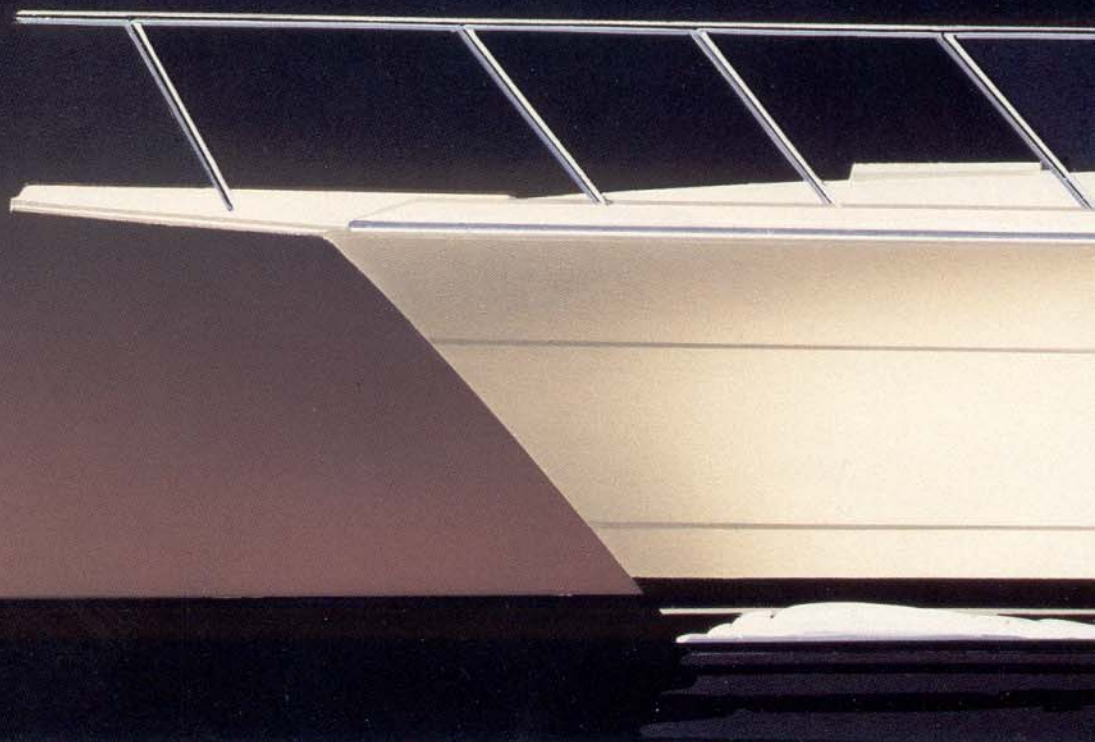
For starters, a new, alternate floor plan offers one advantage after another for your family. There's a full-height entry door to the salon; a redesigned, roomier bow state-room and head; an open

galley and, for sit-down meals, a comfortable dinette. And there's even an extra locker in the aft companionway for a compact washer/dryer.



New for 1990 is the redesigned flybridge, with a forward helm station. Behind the swept-back windscreen are weather-shielded electronics boxes, and three comfortable bench seats so the family can be where the fun is.

Today's Hatteras 40DC has standard features that include a fiberglass bow pulpit, swim platform and ladder, and a whisper-quiet, multi-zoned air conditioning and reverse-cycle heating system throughout.



Hatteras' best-selling double cabin cruiser now includes a choice of two great layouts.

When we introduced the Hatteras 40 Double Cabin about four years ago, we suggested you consider it your invitation to join a very exclusive club.

And when you look at all the space, comforts and quality that Hatteras offers, you realize why so many people joined!







And because this 40DC is still every inch a Hatteras, you'll find typical Hatteras touches everywhere you look, such as the dry bar with room for optional ice maker. This salon is fully furnished, including an L-shaped sleeper sofa, built-in TV, AM/FM cassette stereo, and dinette. The galley is thoughtfully organized, and includes a microwave/convection oven, a cooktop range, and an AC/DC refrigerator/freezer. The complete decor package includes not only window treatments but bed coverings and linens as well. And there are two spacious heads with vacuum-flush toilets, molded sinks/countertops, full-sized stall shower, and mirrored vanity with storage.

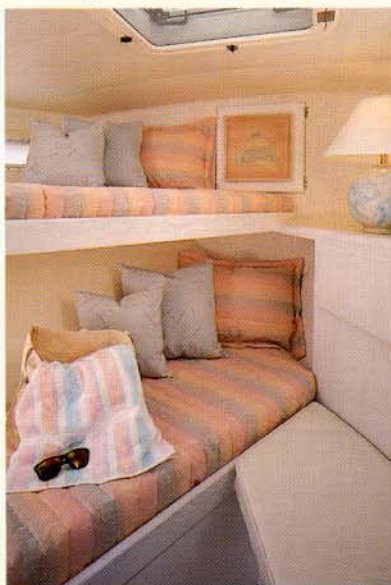




Hatteras believes that, for many people, *choice* is the biggest luxury of all. So, in addition to the alternate floor plan, you can also choose an open aft deck or sun shade; bow

stateroom with two single berths or a double berth; a traditional mid-toned afromosia wood finish or optional light-finished natural wood interiors; a selection of interior decor schemes; and the choice of gasoline or Caterpillar 3208TA 375 SHP diesel engines.

However, whatever *you* choose, there are some things the hands at Hatteras *insist* on choosing for you. They include: An all-gel-coat prefinish, then a polyurethane painted exterior for a superior finish. Freshwater-cooled main engines and generator. A 12VDC, 120/240

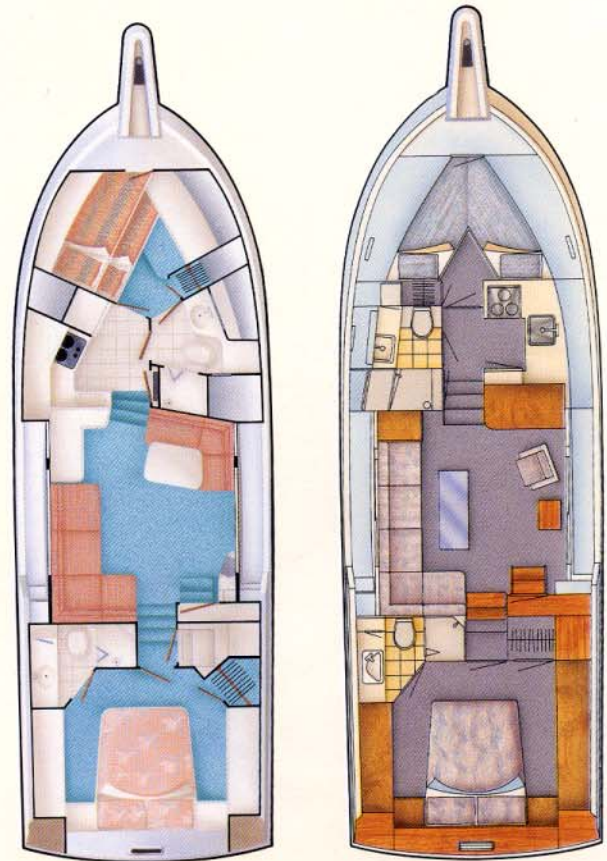


VAC electrical system. A 40-amp battery charger and transformer-connected shorelines. The Hatteras Systems Monitor which watches over vital boat functions with visual and audible signals. Engine room automatic fire-extinguishing system. And complete

electrical bonding system and bottom paint.

When all is said and done, the Hatteras 40 Double Cabin offers you more reasons than ever to be a Hatteras owner.

Because your family deserves the very best that our family can offer.



ALTERNATE ARRANGEMENT

STANDARD ARRANGEMENT

SPECIFICATIONS:

Length	40' 10"	12.44 m
Beam	13' 7"	4.14 m
Draft	4' 6"	1.37 m
Fuel Capacity	359 gal.	1,359 ltr.
Water Capacity	110 gal.	416 ltr.

Detailed specifications are available in the Hatteras 40DC buyers guide.

Hatteras

Hatteras Yachts
2100 Kivett Drive
P.O. Box 2690

High Point, North Carolina 27261 U.S.A.
Telephone: (919) 889-6621