

The new fiberglass Hatteras 41 Twin Cabin





The new fiberglass Hatteras 41 Twin Cabin pr

Designed for seagoing families who also cherish their comfort, the 41 ft. Hatteras Twin Cabin Cruiser has more usable space than 45 ft. wood boats. With a 16'10" by 10'6" main salon, a forward cabin, and a large aft stateroom it sleeps 6 with complete privacy.

It has well-appointed dining, abundant storage. Its fiberglass hull design offers superior riding qualities. It is a boat that does not pound, roll, yaw or pitch when running. Yet it cruises f



Provides spacious comfort for off-shore cruising

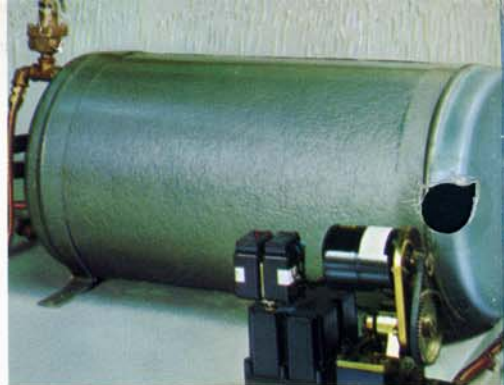
pace of entertainment and
room.
n gives it exceptional sea-
pleasure to handle. It does
broach. It is dry, smooth-
ster than average.

The Hatteras has been proved one of the safest
boats being built today. The one-piece seamless
fiberglass hull and one-piece superstructure have a
resilient quality that takes shocks and jolts better
than other materials.

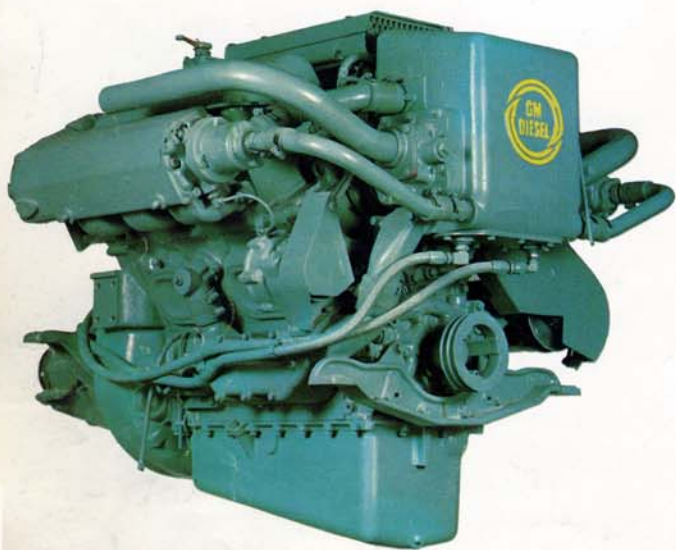
This can truly be a home afloat.



Hatteras Master Electric Panel. The last word in yacht safety and electronics. Central control and protection for both 12 volt system and 110-volt A.C. Voltage input from shore line or from generator can be read at a glance—also current being used. Battery condition is indicated. All circuits are protected by circuit breakers and master switches.



Hot water tank and pressure pump assure adequate hot water for modern living afloat—dishwashing, showers, shaving, etc.



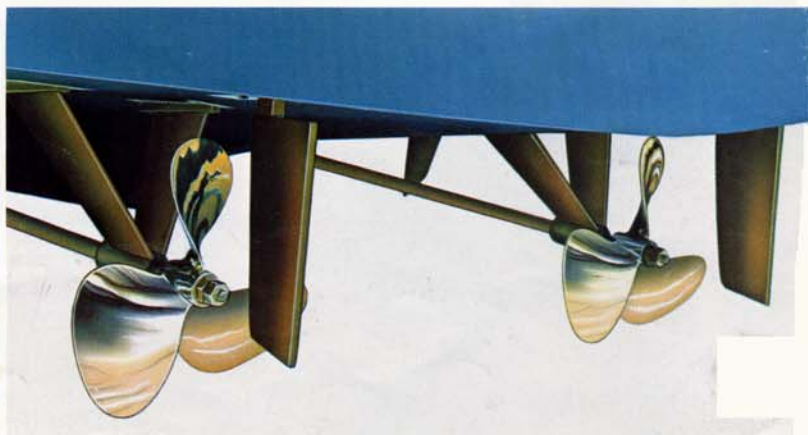
The Hatteras 41' Twin Cabin offers Diesel and gasoline power options. Diesel engine options are twin General Motors 6V—53N Diesel engines and twin General Motors 8V—53N Diesel engines.



The gasoline engine option is twin 290 H.P. engines. Because of the Hatteras fiberglass construction and lack of frames, there is extra space around the engines to make them easily accessible.



A standard on all Hatteras boats—sea valves are installed on all through-hull underwater fittings. All underwater fittings are mechanically bonded to a common ground to help prevent electrolytic erosion of metals.



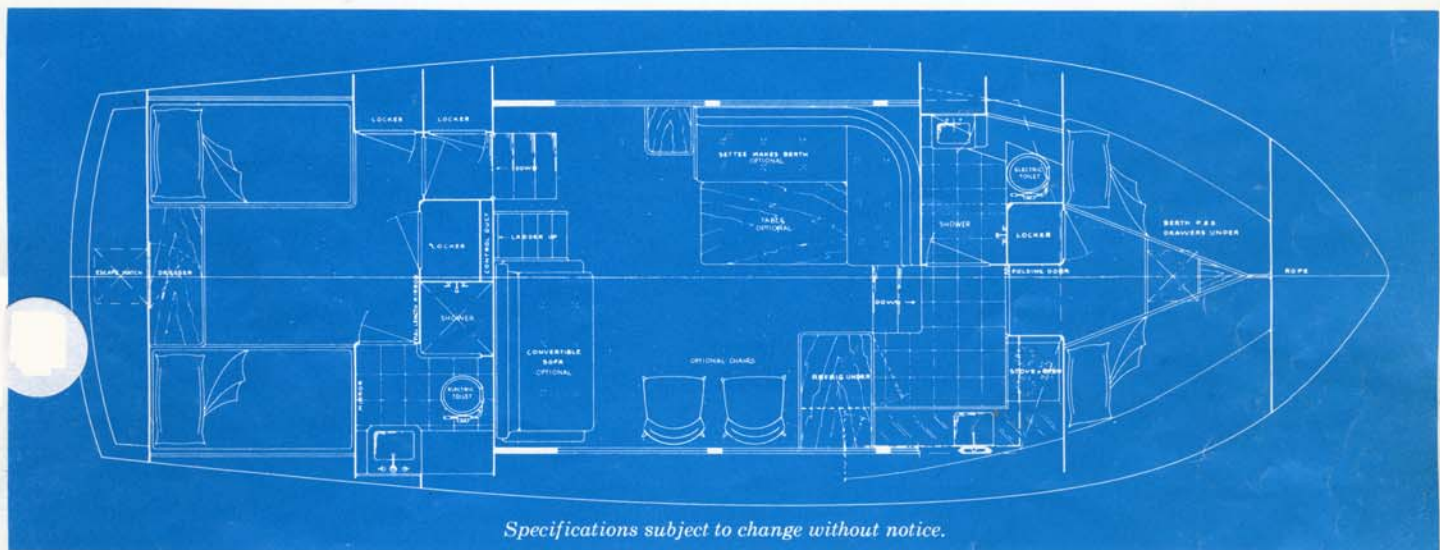
V-struts and intermediate struts keep Hatteras propeller shafts securely in alignment for maximum performance at high speeds and even in heavy seas. Underwater fittings are heavy-duty manganese bronze.



The big aft deck is ideal for an outdoor snack or a party. In the new Hatteras 41' Twin Cabin Cruiser, an improved version of the very popular Double Cabin model, the aft deck has been given additional weather protection with an extended hard top and improved wind-shield design.



Control station on Bridge deck includes instrument panel and switch panel; Morse controls; positive, fool-proof hydraulic steering; 5 in. Constellation compass; and large fiberglass chart deck with room for radio. Also adjustable dual helmsman seats, foot rest, and storage space.



Specifications subject to change without notice.

Plan shows spaciousness of the Hatteras 41' Twin Cabin. In addition to its comfort, the Hatteras is one of the easiest boats to maintain—because of its one-piece fiberglass hull and one-piece

fiberglass superstructure. There are no seams, no joints, no rust, no dry rot to worry about. Caulking and sanding are eliminated. Paint for appearance, if you wish—but you never have to paint for protection. Result—more time on the water, less in the yard.



Optional is a deluxe entertainment center, complete with sink bar, ice-maker, sea-going bottle cabinet. Hatteras fiberglass spaciousness makes possible room for extra niceties.

The stereo sound record player is standard equipment on the Hatteras 41' Twin Cabin. Note storage room for record albums. Another new Hatteras touch is a built-in seat on the forward deck for cruising lovers of air and sunshine.



Optional ice-maker in main salon supplies ice cubes to replenish cold drinks. Other Hatteras factory-installed optionals are air conditioning with reverse cycle heating, fresh-water cooling for gasoline engines, boarding ladder, rattan and molded lounge chairs.



For more luxurious living afloat

Uncrowded, luxurious living is exemplified in the aft stateroom (above) and the bow stateroom (below).

The spacious aft cabin has wall-to-wall carpeting, three hanging lockers—one with a full-length mirror on the door, a ten-drawer dresser with a wide mirror above it, and oversize beds. The aft stateroom head has a shower with hot and cold water.

The bow cabin also has hanging locker, drawers, storage cabinets. Both staterooms have polyfoam mattresses and cushions, 110-volt outlets, plenty of lights.

Panelling is beautiful Philippine mahogany, fashioned by master craftsmen from High Point, N.C., noted as a fine furniture center.





Spacious bow head has screened portlight behind curtain—2 storage cabinets below lavatory and counter, plus additional linen storage. Medicine cabinet, behind mirror, in turn swings open to a large locker. Two 110-volt outlets. Waterproof decorator wall covering; vinyl floor covering; shower. (Optional linen locker.)



The aft stateroom head is equipped with a vitreous china lavatory and hot and cold pressure water; a 6-in.-size stall shower with curtain; large linen locker; medicine chest with mirror; storage space in vanity (has micarta top); bulkhead light and 110-volt outlets; screened portlight; towel bar and paper holder; decorator wall covering.



The efficient, roomy galley has a 3-burner electric stove with oven (exhaust blower over stove); a 10 cu. ft. refrigerator with freezer; dish lockers and glass rack. The stainless steel sink has hot and cold running water. Covered refuse container. Plenty of cabinets, five drawers. Four 110-volt outlets for appliances.



Just a step up from the galley, for easy servicing of meals, with the table placed in front of the comfortable lounge sofa.

The lounge sofa in the 16'10" by 10'6" main salon affords ample seating for dining and entertaining. Optional sofa opens easily to become a comfortable bed at night. The salon has wall-to-wall carpeting, sound-deadening vinyl overhead, and beautiful Philippine mahogany panelling. 86 sq. ft. of window area. Large sliding windows are screened.



**Hatteras
Yacht
Company**

HIGH POINT, NORTH CAROLINA

