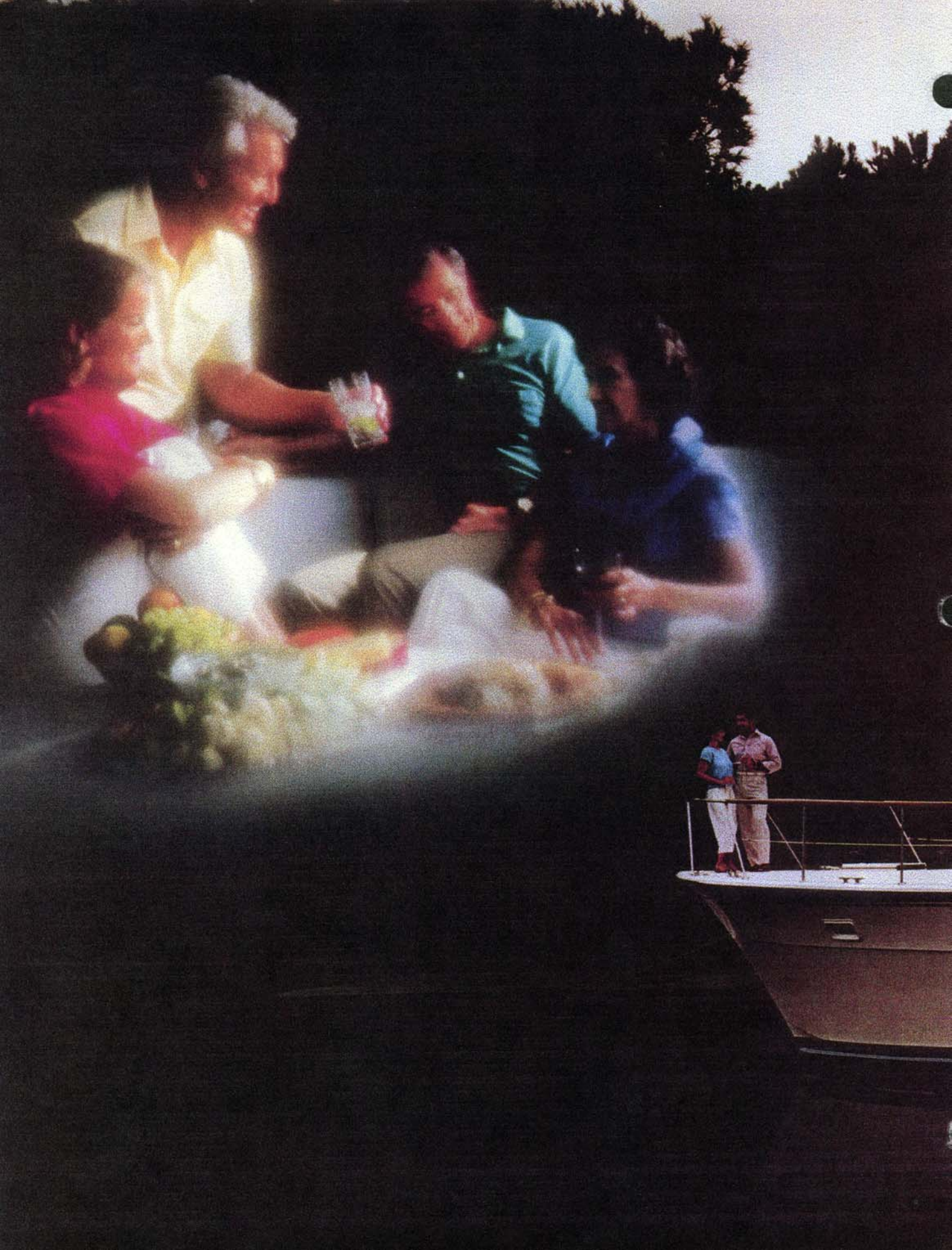




AMF

Hatteras

43 Motor Yacht



The Hatteras 43 Motor Yacht: It's new, it's true to the yachting experience.

If you've been yearning for the luxury, accommodations, and comfort of a true flush-deck motor yacht, your Hatteras 43 has arrived.

For here is truly an honest motor yacht that affords you the pleasure that comes from having your family and friends aboard in a satisfying environment that makes one statement and one statement only: *quality of life comes first; nothing else comes close.*

A quarter of a century of experience has combined to make

the Hatteras 43 precisely your kind of motor yacht.

Built on a genuine Hatteras Hargrave yacht hull, it's designed to be bold and strong, true to the cruising experience...with a modified-vee hull for stability, and a deep keel to keep it on track.

A welcome member of the Hatteras fleet, well conceived and complete in every regard, the Hatteras 43 Motor Yacht encompasses the kind of engineering excellence that makes it truly a Hatteras through and through.



The Hatteras 43 Motor Yacht. It says a lot about you. It says a lot about Hatteras.

One of the most striking things you'll notice about the Hatteras 43 Motor Yacht is all the ways we've made it right—from the start.

You can tell it's a Hatteras yacht by the beautiful and functional design of the deck. A massive flying bridge, with L-shaped seating, compares with those on much larger yachts. The single-level main deck is well-proportioned and generous. And leave it to Hatteras to give you full stand-up headroom to the living areas below.

For entertaining as well as solitary leisure, the aft deck is available with an all-fiberglass wet bar, as well as a combination ice-maker and refrigerator. For those who cruise in climes which require special protection from the elements, a lightweight optional hardtop and wing doors are available. Add an aluminum radar arch and you've got a remarkable yacht. Even for Hatteras.

You can tell it's a Hatteras yacht by the intelligent floor plan. Hatteras believes you deserve—and expect—a no-nonsense approach to design. Starting at the bow stateroom, plenty of drawer space and private access to the forward head, complete with a stall shower. The salon? For your cruising and entertaining comfort, it's especially roomy and enhanced by the effect of the large main cabin windshield. Natural wood panelling, luxurious carpeting, AM/FM stereo with tape deck...excellence is standard equipment in this Hatteras.

You'll find the room you require for your kind of furniture grouping. You have the option of a convertible dinette, and a built-in L-shaped lounge.

If you prefer a lower control station instead of a lounge, that, too, is available.

(One convenience is the location of the optional air conditioning. It's designed into the overhead, to allow you more room and flexibility in quiet, efficient comfort.)

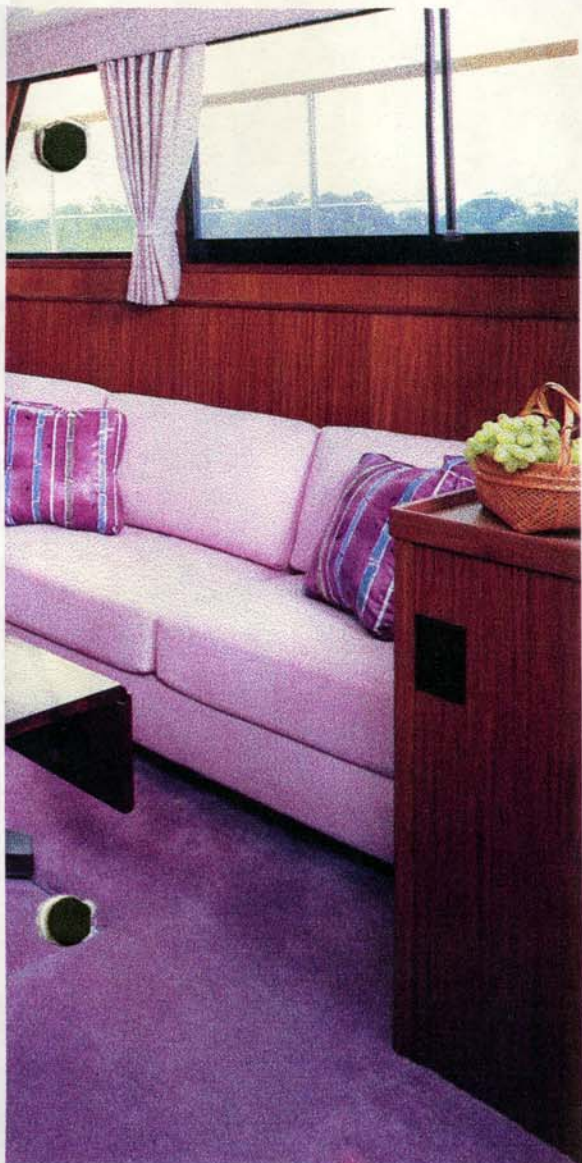
Even the galley shows the kind of perfectionistic consideration you want in a yacht. It feels open and spacious, because it's designed just two short steps down, for a better visual relationship with the salon. (After all, why should anybody be left out of good conversation?)



FLYING BRIDGE is constructed of molded fiberglass and includes ample storage under the control console, L-shaped lounge with storage, stainless steel rails and stanchions, and a control station with all the necessary switches and dimmable lighted instruments for operating efficiency and simplicity.

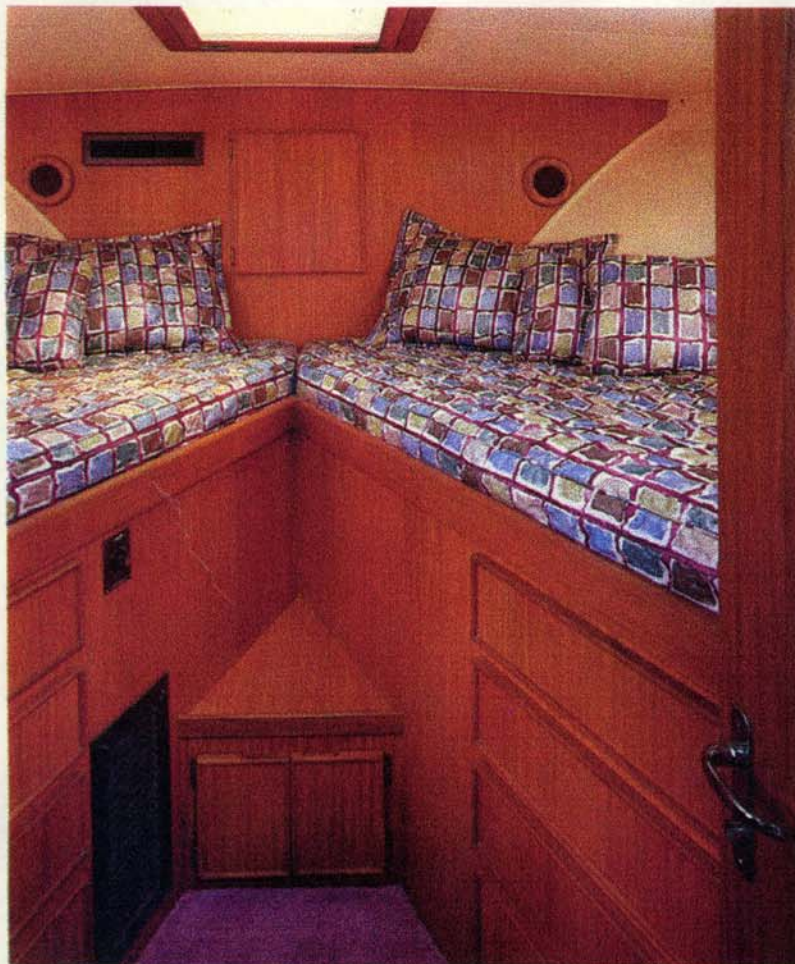
SALON (above, left) features tinted-glass sliding side windows, sofa, and AM/FM stereo with tape deck. It's naturally lit and spacious, fit for grand entertaining or low-key relaxing. Steps leading to open galley (right) allow for good conversation.



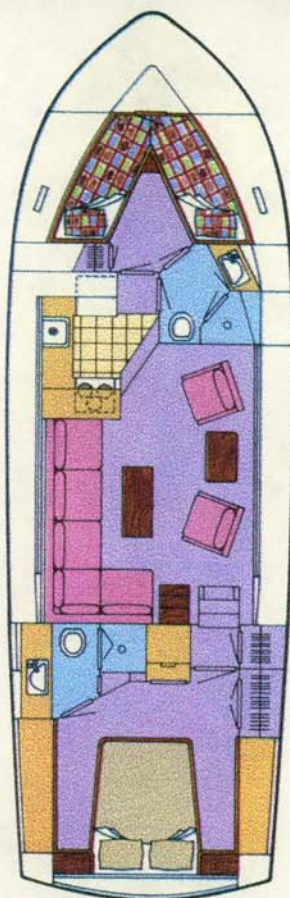


The GALLEY turns any cook into a chef. It is well lit and open to the salon. Equipped with high pressure laminate countertops and vinyl flooring for easy cleaning, 120 v refrigerator with freezer, 3-burner 120 v electric stove with oven and rotisserie, stainless steel sink, exhaust blower, glass rack, and storage lockers. This is all the galley you could ever want.

AFT DECK is constructed of molded fiberglass with non-skid surface, teak handrails with stainless steel stanchions, boarding gates port and starboard, walkways to the forward deck, steps to the flying bridge, and a door to the salon. Flexibility and convenience in comfort—that's the theme of the aft deck.

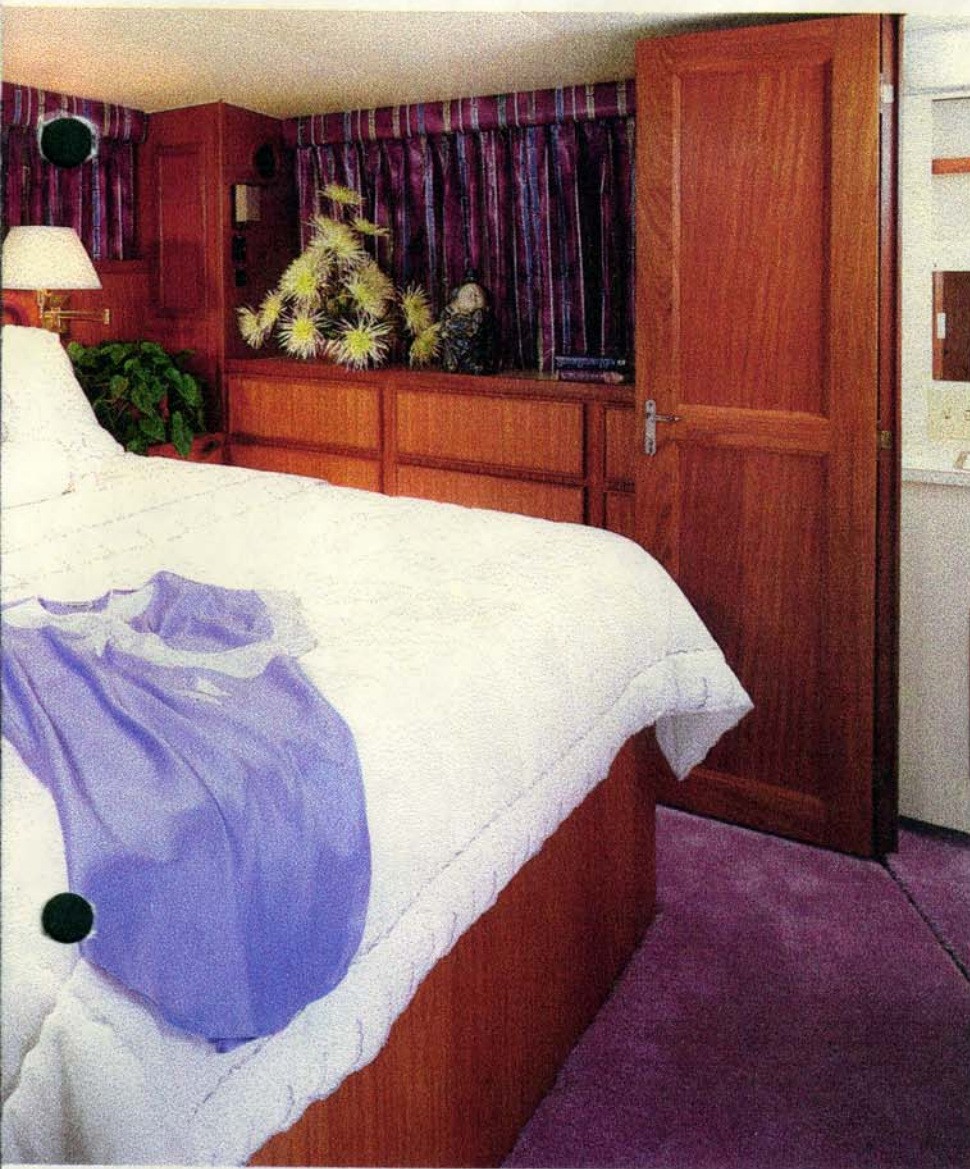


BOW STATEROOM is completely carpeted, and comes with two vee berths and more storage than you would think possible: drawers under the berths, a full hanging locker and a rope storage locker. Full-length mirror and polyfoam mattresses are also standard equipment.



Floor plan with standard queen berth and bunk cover in master stateroom. Twin berths also available.





The master stateroom gives new meaning to such tired clichés as “beautiful” or “roomy.” Everything you hoped for in a yacht, we designed into this one. For instance, a place for an optional washer/dryer. The Hatteras 43 Motor Yacht has second-home liveability, with a myriad of live-aboard amenities. You’re demanding, and so are we.

You can tell it's a Hatteras by its unchallenged seaworthiness. On the oceans of the world, nothing says capability like Hatteras, and as the owner of a Hatteras yacht you have the assurance that you've got command of the seas, not vice versa. From the generator (6.5 kw gas or 8 kw diesel), to the electrical systems (AC and DC), to the durable, gelcoat-protecting polyurethane finish, to the automatic engine room fire extinguishing system, to the Hatteras Systems Monitor with visual and audible signals—nobody does it like Hatteras.

Of course, something more is yours to enjoy in this Hatteras, as well. The rewarding *feeling* that comes from knowing that you're truly a Hatteras yacht owner; that your return-on-investment will be sound; that your pleasure won't be compromised; and that your own experience will be unique.

The Hatteras 43 Motor Yacht. From the world's most renowned yacht builder to you.

It makes anything else...something less.



MASTER STATEROOM, with standard queen size bed. The only way to describe it is luxury nonpareil. Carpeting, valance boards with draperies, full-length mirror and paneled bulkheads are just the beginning. The dressers are both port and starboard, plus there is a huge hanging locker with shelves—all the living and storage space to accommodate your every living need.

MASTER HEAD includes stand-up stall shower, impressively large linen lockers, easy-to-clean vinyl surfaces, medicine cabinet with mirrors, and electric toilet, all designed with your convenience in mind.

GUEST HEAD also has a stand-up stall shower, linen lockers, and electric toilet. We treat your guests to the same uncompromising luxury with which we treat you.



AMF

Hatteras Yachts

High Point, North Carolina 27261 U.S.A.