

AMF

Hatteras

46 Convertible



THE POWERHOUSE SPORTFISHERMAN



The Hatteras 46 Convertible is one tough boat to beat. In more ways than one.

We've designed this sportsfisherman to take on a new high performance power package for more speed at sea, and a new layout for more livability in port. The 46 Convertible is a true Powerhouse combination.

With the optional high performance twin G.M. 8V-92TI power package, rated at 1300 H.P., you can run through the water at cruising speeds above 25 knots.

To retain the ruggedness and still offer a high performance package yielding 44% more power, we specially engineered the new 46C's hull structure to support the stress you get at higher speeds. So, if you need to outrun a storm or want to beat the pack back to the dock, you can push up the throttle without pushing your luck.

Recognizing the sportsfisherman's need for living

flexibility, we also designed a new layout that offers practical, but luxurious choices. The standard two stateroom layout features a lower galley arrangement that's open to the salon while the deckhouse galley arrangement provides an expansive salon-galley area. Plus a third stateroom.

And while you're out there fishing, the 46 Convertible is designed to make life a lot easier, too. Its cockpit is large enough to swing a big fighting chair and has a sole of durable fiberglass with an optional double-hatched fish box set in. Its transom gate is almost a full yard wide to make it easy to pull those big ones aboard. There's a handy bait and tackle center with top-loading freezer available. And air intakes are positioned under the coaming to keep the engine room drier.

The 46 Convertible. More speed at sea. More living flexibility in port.



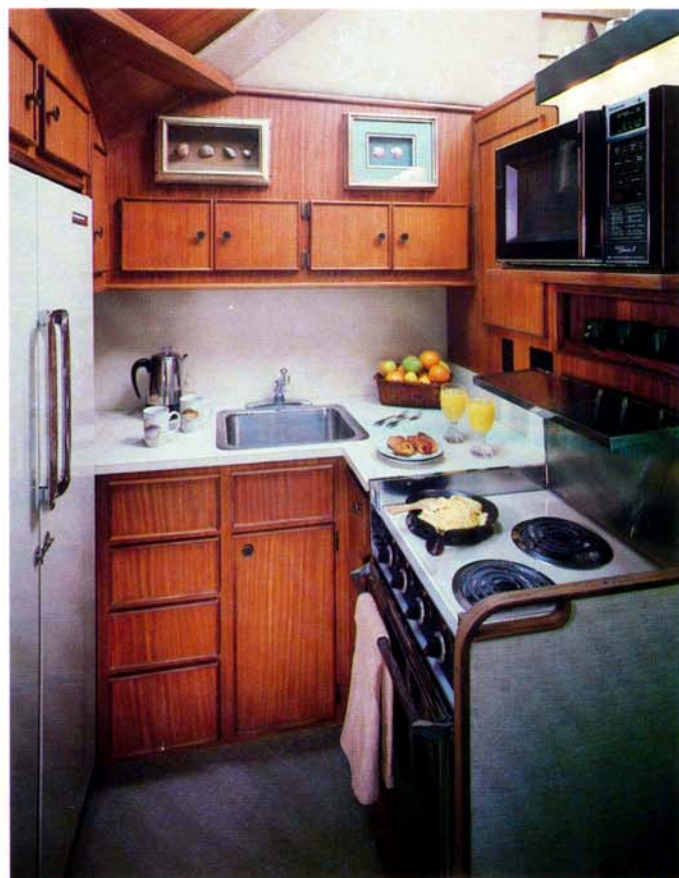


Wide, bright and handsome salon (looking forward). Entertainment center with ice maker, wet bar and storage is standard.



Salon looking aft. Reflects seating convenience created by the optional U-shaped lounge. Carpeting and draperies add to the comfort. AM/FM stereo receiver with tape player and electric panels are conveniently located adjacent to the sliding door to the cockpit.

Convenient U-shaped galley, 3 burner range with oven, stainless steel sink and upright side-by-side refrigerator/freezer unit. Ample storage space for extended provisioning in beautifully crafted wood cabinetry.



Living flexibility that combines luxury with practical choice.

Whether it's the standard two stateroom, lower galley arrangement or the optional deckhouse galley arrangement with three staterooms, both layouts really lay all those Hatteras luxuries on.

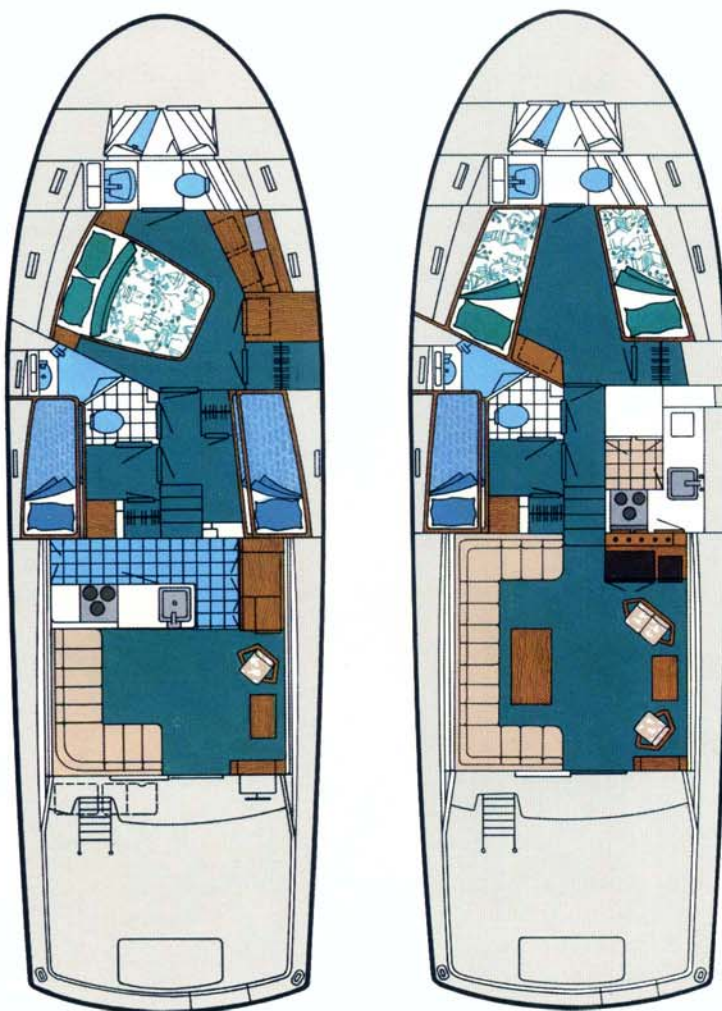
Each layout offers you a forward master stateroom with a choice of a walk-around queen bed or twin berths, plus a port guest stateroom with upper and lower berths. Each stateroom has a private head complete with stall shower.

The spacious salon has a built-in entertainment center with automatic icemaker, wet bar and ample

bottle and glass storage.

An optional built-in U-shaped lounge provides comfortable seating in the salon. There's a standard AM/FM stereo receiver with tape player and air conditioning and heating throughout. To truly personalize your 46, choose from a broad selection of plush carpeting, fashionable draperies, and a host of seating and decorating selections.

Your Hatteras dealer will be pleased to provide additional details about the features and equipment of the Hatteras 46 Convertible—the powerhouse sportsfisherman.



Top Left

Optional queen berth, Master stateroom. Doorway to private head is seen to right. Four opening portlights and a sizable deck hatch give the Master stateroom an open, airy quality with excellent ventilation.

Top Right

Dresser and ample drawer storage in Queen berth stateroom. To right is full hanging locker.

Center Left

The guest stateroom accommodates two in upper and lower berths and provides a hanging locker, built-in nightstand and under berth storage. There is private access to a lavatory with shower.

Center

Port side guest head with shower has private access from guest stateroom as well as from the companionway.

Center Right

Starboard side guest stateroom is available when you select the optional deckhouse galley arrangement. Upper and lower berths, hanging locker, drawer storage, and full length mirror complete this commodious guest area.

Lower Left

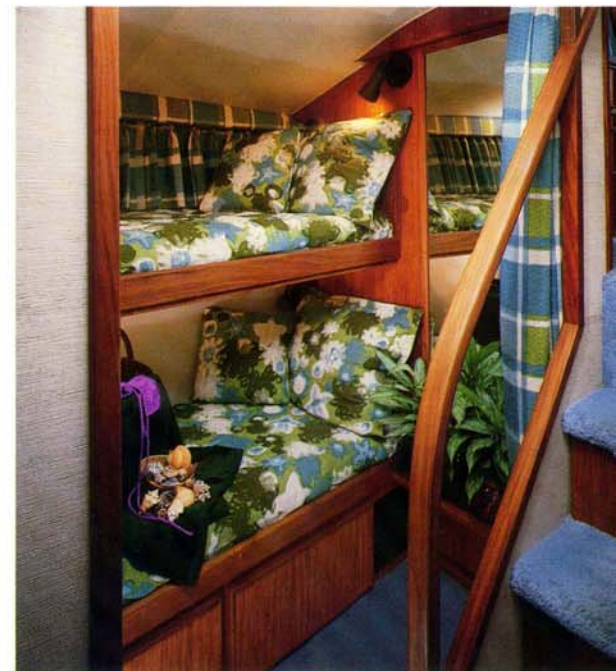
Standard twin berth master stateroom. View aft shows built-in dresser, hanging locker, drawer storage, and companionway.

Lower Right

Master head, showing AC electrical outlet, AC and DC lighting, linen and toiletries storage. Stall shower is to right of sink.

The deckhouse galley is built into the forward corner of the salon. It includes range and oven, refrigerator, large freezer, stainless steel sink, and good undercounter storage. A built-in L-shaped lounge is standard in the optional deckhouse galley plan.







AMF

Hatteras Yachts

High Point, North Carolina 27261 U.S.A.

46C 7.5 0882
Printed in U.S.A.

AMF Hatteras Yachts reserves the right to make styling, design, equipment and construction changes without notice. Also, prices are subject to change without notice. Some items shown may be optional. Hatteras is a registered trademark of AMF Incorporated. © 1982 AMF Incorporated