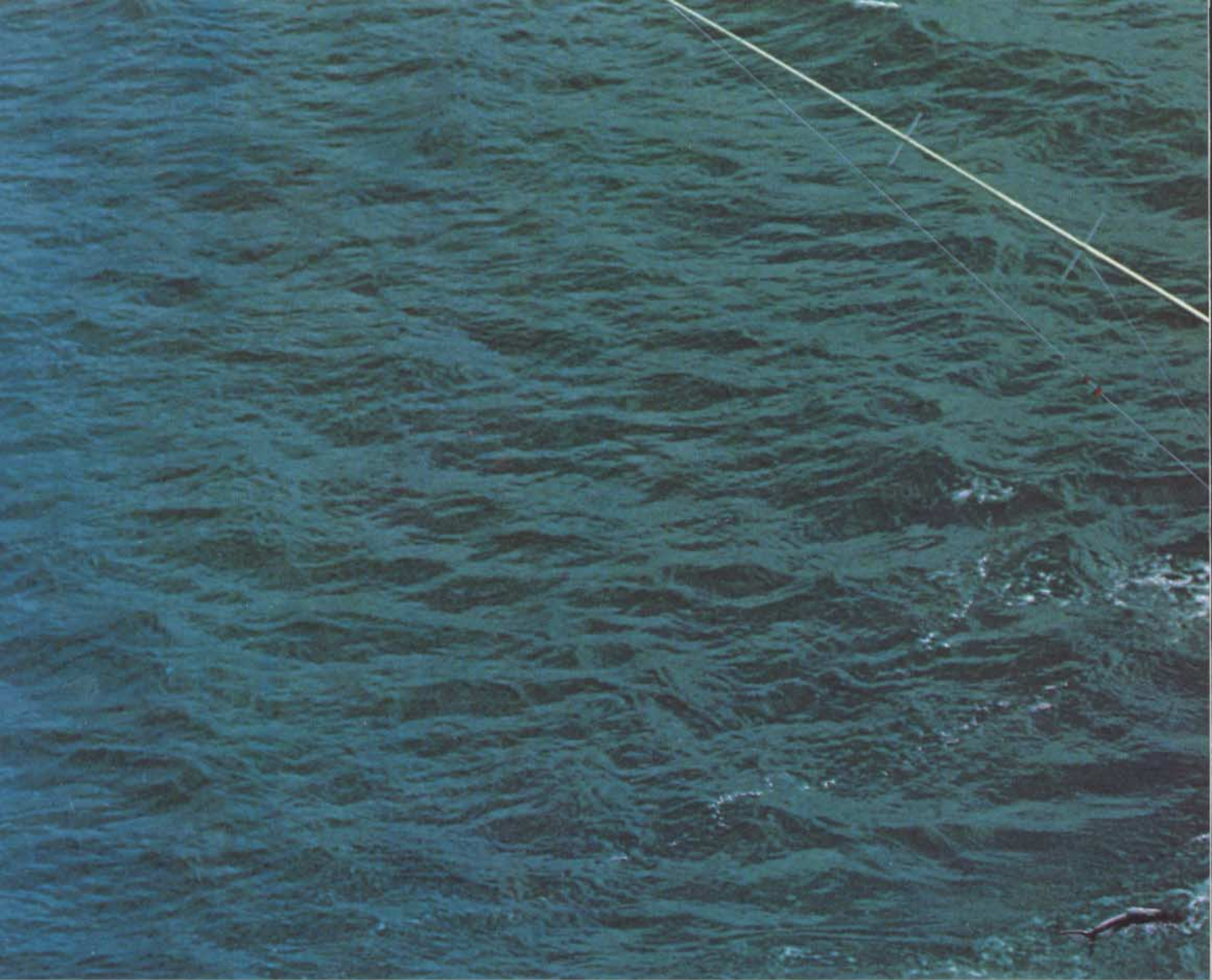


AMF

Hatteras

46 Convertible



One day aboard one of the world's

Strong statement. But we think that much of our new Hatteras 46 Convertible. We think you will, too. But until you can board the 46 for a day of fishing, read what you have to look forward to:

Welcome aboard.

The first thing you'll see is the spacious cockpit—it's 12' 7" wide by 10' 1" So there's plenty of room for

a fighting chair and two fishing chairs. And, of course, the cockpit is self-bailing and has storage beneath the sole. As with all the decks, the sole is non-skid fiberglass. Transom gate? Standard. You'll really appreciate it once you've wired that big marlin. All you have to do is open the gate, back her down—slide in your fish. (Comes in handy for boarding, swimming, scuba diving and dinghy handling.)

"She's beautiful at sea!"

Just wait till you take her out. You'll see why Hatteras owners keep telling us, "She's beautiful at sea!" And she is. We know that for sure because we tested the 46 (and every other Hatteras hull design) in the tricky waters off Cape Hatteras,



will prove she's great fishing machines.

"...Graveyard of the Atlantic!"
Let's go up to the flying
bridge. It's one of the
largest in her class.

Up on the bridge.

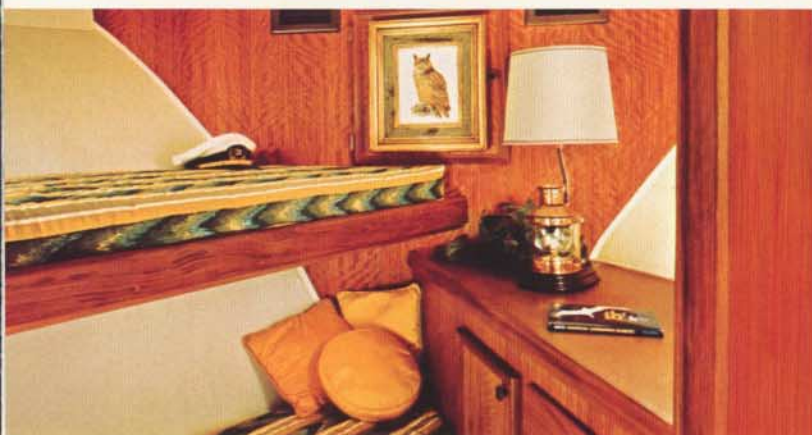
You'll have a good look at
what's going on down in the
cockpit. And there's plenty
of seating (vinyl-covered
polyfoam) for guests.

Go ahead, take the helm.

You've got all the per-
formance you'll need in any
tournament. All you'll need
to get back to home port,
too—you can be 30 miles out
and get back in a hurry.
Choose your engines from
several twin diesel installa-
tions selected to complement
the 46's proven hull design.
It helps fight pounding,
yawing and broaching.

Trim tabs (standard) are
tucked in under the hull out
of the way of lines. And
when you're through
fishing...

There is nothing to say that a
great fishing machine can't
also be a luxury yacht, and
the Hatteras 46 is. Turn the
page and see for yourself.



The master stateroom has twin berths with polyfoam mattresses and storage beneath. There is additional storage in the hanging locker, plus a full-length mirror, carpeting and an overhead hatch with screen.

The bow stateroom has upper and lower polyfoam berths. There is storage beneath, in the bulkhead opposite and in the hanging locker. Notice the paneled bulkheads—hand finished by the proud craftsmen of North Carolina, the furniture capital. The bow stateroom also features a screened overhead hatch and rich carpeting.

There are two heads on board. The master head has a stall shower with door. Both the master and guest heads (above) have vitreous china lavatories, exhaust blowers, 120-volt duplex electrical outlets, electric toilets, paneled bulkheads and laminated counter tops. The guest head with shower is off the companionway near the bow stateroom.



The main salon (shown looking fore and aft) proves that a fishing yacht can be luxurious. Draperies and carpeting are standard and available in a wide variety of pleasing colors and practical materials. There is an entertainment center with ice maker, wet bar and storage. The salon features sliding glass tinted windows with screens. The entire yacht has

air conditioning and heating —standard. Furthermore, most areas of the 46 feature individually controlled speakers for the AM/FM stereo radio.

There are two layouts available. Shown here is the galley below with a 3-burner electric range with oven and rotisserie and a 120-volt, 16.5-cubic-foot refrigerator with freezer, laminated counter tops and exhaust blower.



Allison Tuna



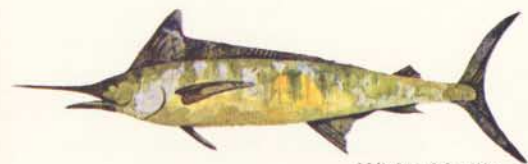
Blackfin Tuna



Bluefin Tuna



Sailfish



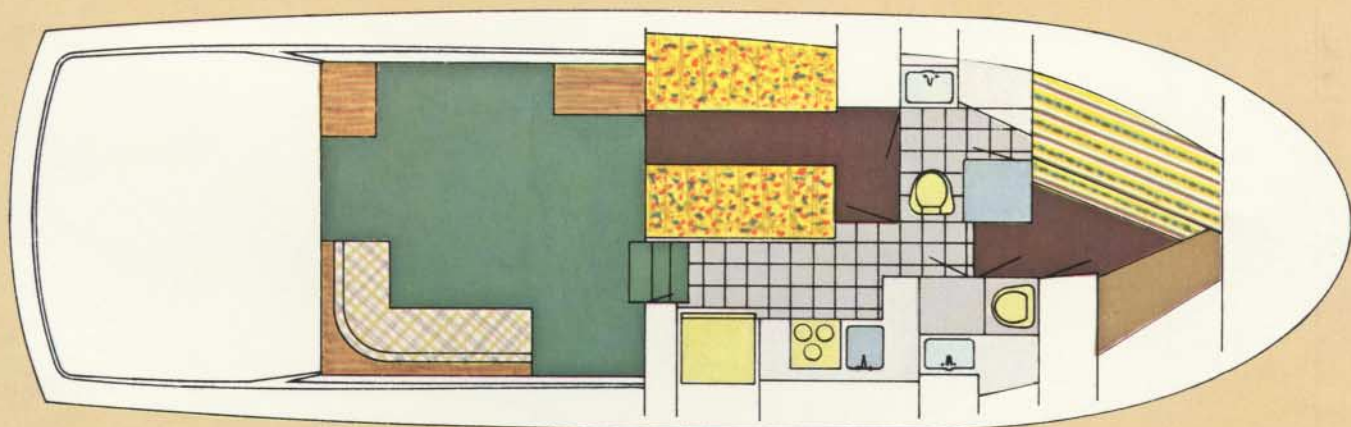
White Marlin



Blue Marlin

An optional floor plan has the galley in the deckhouse (shown in two views above). It's fully equipped with a 3-burner electric range with oven and rotisserie, 120-volt, 13-cubic-foot refrigerator/freezer, laminated counter tops, drawer and cabinet storage. Of course the salon/galley is handsomely finished in paneling to match the deckhouse styling.

The optional floor plan with deckhouse galley allows for an additional berth below. There's a large hanging locker and plenty of drawer storage under the berth. The bulkheads are hand finished in natural wood paneling. Carpeting and draperies are standard here as they are throughout.



The flying bridge is all molded fiberglass and offers an unobstructed view all the way around. There is full instrumentation, a helmsman seat and additional cushioned seating for guests. The windshield has a sturdy stainless steel hand rail integrated with the safety rail.

The 46 Convertible is available with optional cockpit controls in lieu of deckhouse controls. There is also an optional fishing center with tackle storage, freezer, sink and cutting board.

Like all Hatteras models, the 46 Convertible is built with patience, pride and craftsmanship. We've

designed-in the qualities you expect and demand in a fine yacht: seaworthiness, safety, style and comfort. We haven't forgotten about value either. Each model is designed with equipment that not only increases your boating satisfaction but helps each Hatteras yacht hold its traditionally high resale value.

We'd like you to experience the pleasure of owning a Hatteras.



AMF
Hatteras