



AMF
Hatteras

48 Motor Yacht
48 Cockpit Motor Yacht

Designed By You To Fit The Life You Love

What's your boating pleasure?

Whether you love the excitement of planing hull performance or the relaxed pace of semi-displacement cruising; motor yacht styling or a functional cockpit for fishing, diving or dinghy handling, the versatile new Hatteras Forty Eight Motor Yacht and Cockpit Motor Yacht let *you* make the choices and design a yacht which perfectly suits the cruising life as you love to live it.

For the Hatteras Forty Eights, naval architect Jack Hargrave has developed a unique new hull form with rounded sections forward

and hard chines aft. If you select twin GM 6-71N diesels, you'll get fuel-efficient cruising at ten to twelve knots, a range of over 500 miles, and excellent handling at sea. If you choose optional GM 6V-92TA diesels, you'll get efficient low-speed operation as well as planing hull performance with a cruising speed of around eighteen knots.

The Forty-Eights offer you a spacious, covered aft deck for entertaining and outdoor living. Standard wing doors and optional enclosures allow you to transform the aft deck into a year-

round center for relaxed living.

The Motor Yacht version of the Forty Eight offers a luxurious aft owner's suite with private head, a comfortable bow stateroom and head, and a third stateroom and head amidships. The Cockpit Motor Yacht offers the same guest quarters in the bow, an equally accommodating owner's suite aft, and the advantages of a generous five-foot cockpit with transom gate.

And of course the Forty Eights come standard with the most important asset of all — meticulous attention to detail by the experts at America's most experienced power yacht builder, and the Hatteras heritage of quality through and through.



The Hatteras Forty Eights



Livability Is The Key

The functional layout of the Forty Eights, above decks and below, has been carefully designed to make maximum use of space and incorporate all the amenities which will make your life aboard a pleasure.

The standard Forty Eight Motor Yacht features a roomy main salon, an apartment-size galley with dinette, three staterooms, a large aft deck and flybridge, and a walk-in engine room. The standard Cockpit Motor Yacht provides the same salon, galley

and flybridge arrangement with two staterooms and the added utility of a handy cockpit.

In either version, the spacious foredeck offers plenty of room for an optional bow pulpit, windlass and deck boxes. Full walk-around side-decks make line handling a breeze. A swim platform can be added to either version, along with a swim ladder. For entertaining, the aft deck can be equipped with a wetbar which includes an icemaker, sink and plenty of storage for bottles and glasses.

The main salon — accessible from the aft deck by a full-height companionway — is positioned amidships to take full advantage of the Forty Eights' fifteen foot beam. Full paneling in rich, natural woods gives the salon an air of simple elegance and can be decorated to match your lifestyle and discriminating tastes. And we've gone to extra lengths to provide voluminous storage — enclosed cabinets

The Forty Eights' main salon (right) offers an abundance of space for comfortable living and can be equipped with an inside control station if you desire. The covered aft deck (below) is a complete center for casual relaxation.



in both port and starboard side-walls and separate built-in cabinetry to use as you choose for television placement or your personal library.

You may even equip the main salon with an inside control station to allow you to take your Hatteras through the nastiest weather in snug comfort.



Separate Worlds Of Private Elegance

Accommodations aboard the Forty Eights are arranged to provide privacy and sumptuous surroundings for everyone aboard.

The full-width owner's suite aft is an oasis of quiet which includes a tapered queen-size double bed. In the Cockpit version, twin berths are an available option. The owner's suite features a large hanging locker, twin nightstands and two dressers with six storage drawers each. The suite's private head features a separate stall shower.

For your guests, the Forty-Eight Motor Yacht provides an aft stateroom with crisscross berths, a large hanging locker, ample drawer storage, and a separate

guest head with shower.

The bow stateroom provides yet a third private area with over/under bunks, a hanging locker, four-drawer dresser, and its own private head, also with shower.

In either of the Forty Eights, you can add an additional two-berth stateroom in place of the standard dinette.





The owner's stateroom (below) and head (left) of the Forty Eights create a snug retreat aft with all the comforts of home. The bow stateroom and head (far left) provide an equally pleasant area for your guests. The motor yacht version offers a third stateroom with crisscross berths, and a third head.



All The Necessities And Lots Of Luxuries

The Forty Eights' galley, forward of the main salon and open to it for easy communication with guests, is bright and airy and equipped for easy preparation of even the most elaborate meals.

Standard equipment includes a large side-by-side refrigerator/freezer, double stainless-steel sinks, 240 volt, three-burner range with oven, and lots of storage and counter space. Room also has been provided for installation of

an optional microwave oven.

Directly opposite the galley for easy serving is an equally cheerful dinette which includes more storage and can be converted into sleeping accommodations for extra guests.

Recessed into the companionway bulkhead aft of the main salon is the Forty Eights' standard AM/FM stereo receiver with tape player. Below the stereo is a large locker for extra storage or the installation

The Forty Eights' galley and dinette (below) are light, open areas providing plenty of space for meal preparation and dining. There is room for an optional laundry center in the aft companionway (below, right), and an AM/FM stereo receiver with tape player is standard. The engine room (below, far right) has over five-and-a-half-feet of headroom for easy access to the engines and their associated equipment.



of an optional washer/dryer.

From the flybridge of either of the Forty Eights, you will be in effortless command of a world of your own. The flybridge features a complete high-visibility control station and helmseat and room for a broad range of electronics. There is also a standard systems monitor, designed and built by Hatteras, which maintains constant watch over such vital functions as engine oil pressure and

coolant temperature, A.C. power loss, and discharge of the engine room fire extinguisher system.

The standard arch provides an ideal mount for a radar scanner of your choice.

The flybridge also includes comfortable lounge seating for guests and valuable storage areas.

Access to the Forty Eights' engine room is by way of hinged steps between the galley and dinette.

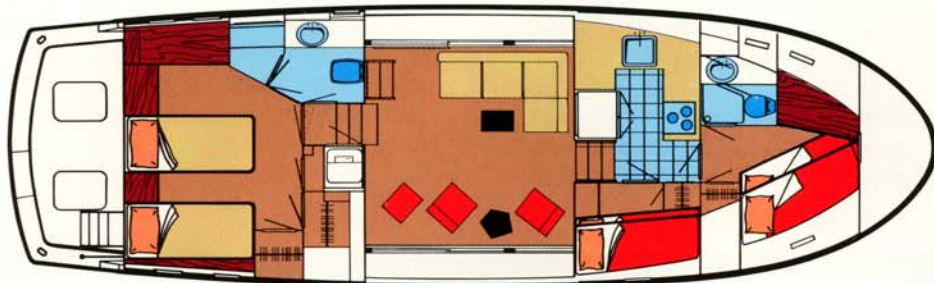
As a cruising yachtsman, you will appreciate the engine room's five-and-a-half feet of headroom which assures easy, all-around access to the engines, the twin banks of heavy-duty batteries with automatic charger, and the standard 15 kw generator. The Forty Eights' electrical system includes transformer-connected 120/240 volt shorelines and automatic ground fault protection on appropriate circuits.

Forty Eight Motor Yacht—Standard Arrangement



It's All Here For You.

Forty Eight Cockpit Motor Yacht — Optional Twin Berths in Master Stateroom



The Hatteras Forty Eights offer you the features and amenities you demand in a cruising yacht designed and built to enjoy.

Whether you want planing hull performance or semi-displacement cruising speed; motor yacht styling or the versatility of a generous cockpit; two, three, or even

A Cockpit Adds Increased Versatility

The Cockpit version of the Forty Eights offers even more convenient access to the water or low docks for easier dinghy or line handling, a large transom gate, high cloamings and a nonskid fiberglass sole. From the cockpit, wide steps lead up to the covered aft deck which is over ten feet long.

In the Cockpit version, your owner's suite aft is a completely private world which includes its own head with separate stall shower. The head is also readily accessible from the companionway and salon. Forward is a bow stateroom with private head, and a third stateroom can be added in place of the dinette.



four staterooms — it's all here awaiting your pleasure.

And all these features are offered with the extra measure of built-in quality you expect from Hatteras. The one-piece hull is laid up entirely by hand. All exterior fiberglass surfaces are fully protected not only with gelcoat but also with a coat of incredibly tough, durable polyurethane paint which stands up to the corrosive marine environment better — and longer — than gelcoat alone. That means you'll spend less time on maintenance and more time having fun. Deck

hardware is all stainless-steel and is thru-bolted to permanently installed backing plates. Bronze sea valves protect all underwater thru-hull fittings. Props are individually inspected for proper pitch and balance. All wiring is color-coded and numbered to help identify its function, secured at least every eighteen inches, and protected from chafe on all bulkhead pass-thrus.

And like all Hatteras yachts, the Forty Eight you design will be backed by a strong warranty and supported by the largest,

best-trained network of dealer service personnel in the industry.

When it comes right down to it, can you really be satisfied with anything else?





Hatteras Yachts

High Point, North Carolina 27261 U.S.A.

48 MY/CMY 15 0982
Printed in U.S.A.

AMF Hatteras Yachts reserves the right to make styling, design, equipment and construction changes without notice. Also, prices are subject to change without notice. Some items shown may be optional. Hatteras is a registered trademark of AMF, Incorporated. © 1981 AMF, Incorporated.