

New Hatteras 48 Yacht Fisherman





This Hatteras 48 Yacht Fisherman just didn't happen. It was designed for experienced boating people who want the best of two boating worlds; spaciousness, privacy and up-to-date comfort for living aboard; plus a large cockpit and flying bridge for fishing. The standard floor plan provides the comfort and privacy of two staterooms. The alternate floor plan has an additional private stateroom in place of the vanity area in the master stateroom. With the addition of an optional sofa bed in the deckhouse, you can sleep eight people in four separate areas.

Galley is open to the salon so the hostess can be near her guests, but located at the same time, on the lower level to avoid the effect of "dining in the kitchen." Galley equipment includes 4-burner electric stove with overhead oven and rotisserie; 16.5 cu. ft. electric refrigerator-freezer; stainless steel sink with hot and cold running water and a soap dispensing scouring brush; glass racks; garbage container; exhaust blower; 110-volt outlets and nearly 24 cu. ft. of storage space. One locker has a damp chaser. Counter tops are high pressure laminate for durability and easy cleaning. In the day-time the overhead daylight is available from the windshield in the forward area of the salon. A fluorescent light for night-time.





The main salon is spacious and has sliding windows with screens on both port and starboard sides. The forward bulkhead has a 3-panel windshield the full width of the yacht. These tinted glass windows provide advantageous viewing as well as supplying light and atmosphere. The width in the main salon is 12'8", window to window, and is 12'2" from the aft bulkhead to the galley steps. The salon includes an optional entertainment center with bar and ice maker; AM-FM stereo radio and tape player and speakers. There is 15½ cu. ft. of storage space in convenient sliding door enclosed shelves. Recessed overhead lighting. You may select your own decor from a variety of fabrics and carpeting. Furniture of your choice is optional.

Master head is accessible to the stateroom and the companionway. It has vinyl flooring, a stall shower with door, electric toilet. Bulkheads are covered with waterproof vinyl fabric and counter tops are high pressure laminate.





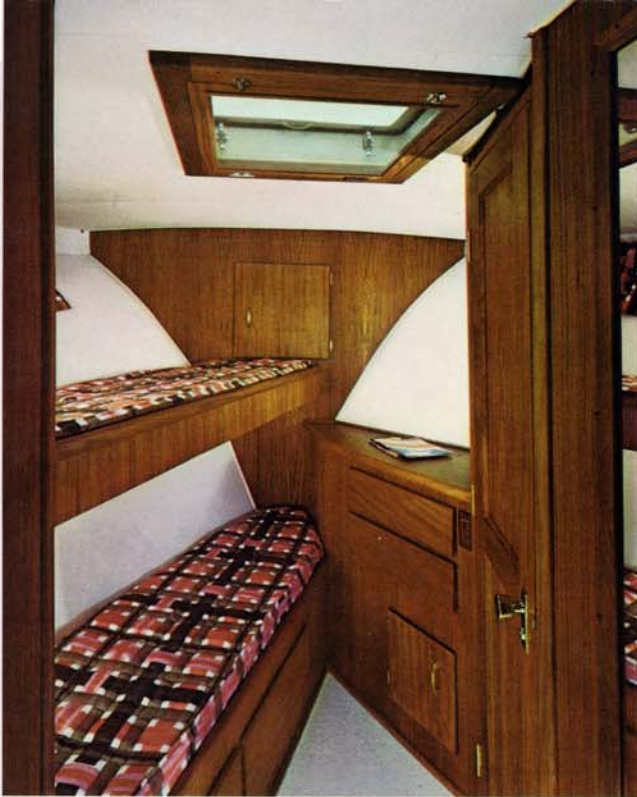
View of owner's stateroom from dressing, vanity area (shown at left in smaller photograph). There are two 6'5" x 40" wide fore-and-aft berths. Daylight and ventilation are provided by two screened portlights, port and starboard; and in the aft bulkhead above the mirror over the built-in dresser is a large sliding, screened window shown with draperies closed to provide privacy when needed. Wall-to-wall carpeting. Recessed ceiling lights; 110-volt outlets. Private entrance from companionway. Also, private entrance to master head.

The master stateroom in the standard plan has spacious dressing area with a built-in vanity and a large full-length locker with folding doors. The light in the locker turns on as you open the door.

In the alternate floor plan on the back page of this brochure this area is used for the guest stateroom.



Forward head is complete with stall shower and door. Vanity has pressure laminated top and a vitreous lavatory; electric toilet; ample storage space; 110-volt duplex outlet. Medicine cabinet with mirror. Exhaust blower. Screened portlight. Vinyl flooring.



The bow stateroom has upper, and lower 6'6" bunks; built-in chest of drawers; 15½ cu. ft. hanging locker. There are two large drawers beneath lower bunk. The spacious rope locker provides additional storage space. Carpeted floor. Draperies on the two ventilating screened portlights. An overhead screened hatch; 110-volt duplex outlet; 12-volt and 110-volt lights. Entrance from galley has door for privacy.



The flying bridge is spacious with the complete control station well located for viewing aft into the cockpit. Adjustable helmman seat. Large seating area forward of control station is cushioned with vinyl covered polyfoam. Wonderful for captain's companions and sun-lovers. Stainless steel safety rails. Windshield. Teak and stainless steel ladder.

The extended hard top and wing doors provide protection for the aft deck. A plastic enclosure is available to form another all-weather lounging and entertainment area.



Versatile cockpit is great for sun-lovers and swimmers. Transom gate provides entrance from the optional swim platform . . . perfect for scuba diving and dinghy handling also. Note the sliding glass, screened window in aft bulkhead of master stateroom.

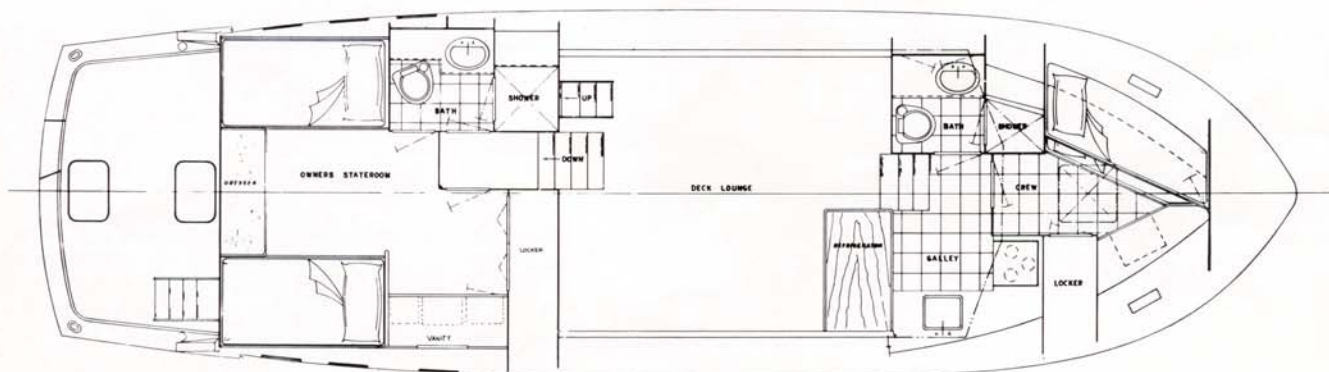


A fighting chair or two portable fishing chairs fit easily into this cockpit. Note ladder from bridge to cockpit and steps from aft deck to cockpit.



Two Boats in One

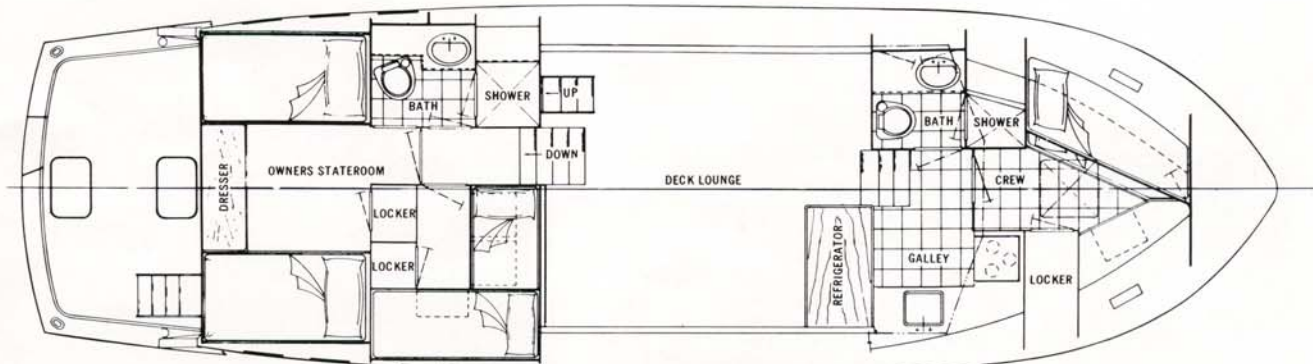
The Hatteras 48 Yacht Fisherman was designed to fill a dual roll; provide spacious living and entertaining accommodations and a convenient cockpit for family water activities; fishing, swimming and scuba diving. The standard floor plan accommodates 3 couples in privacy with the alternate floor plan providing 3 private staterooms. The Hatteras 48 Yacht Fisherman is prob-



STANDARD PLAN



ably the most versatile yacht in her length class ever designed. The pages of this brochure will show you why. This boat has the same sea-ability and strength of other Hatteras yachts. That means reinforced fiberglass construction with an easy-riding Hatteras hull that reduces pounding, yawing and broaching.



ALTERNATE PLAN



Hatteras Yachts, High Point, N.C. reserves the right to make styling, design and construction changes without notice. Also, prices are subject to change without notice.

HATTERAS YACHTS
HIGH POINT, N.C.