



AMF
Hatteras

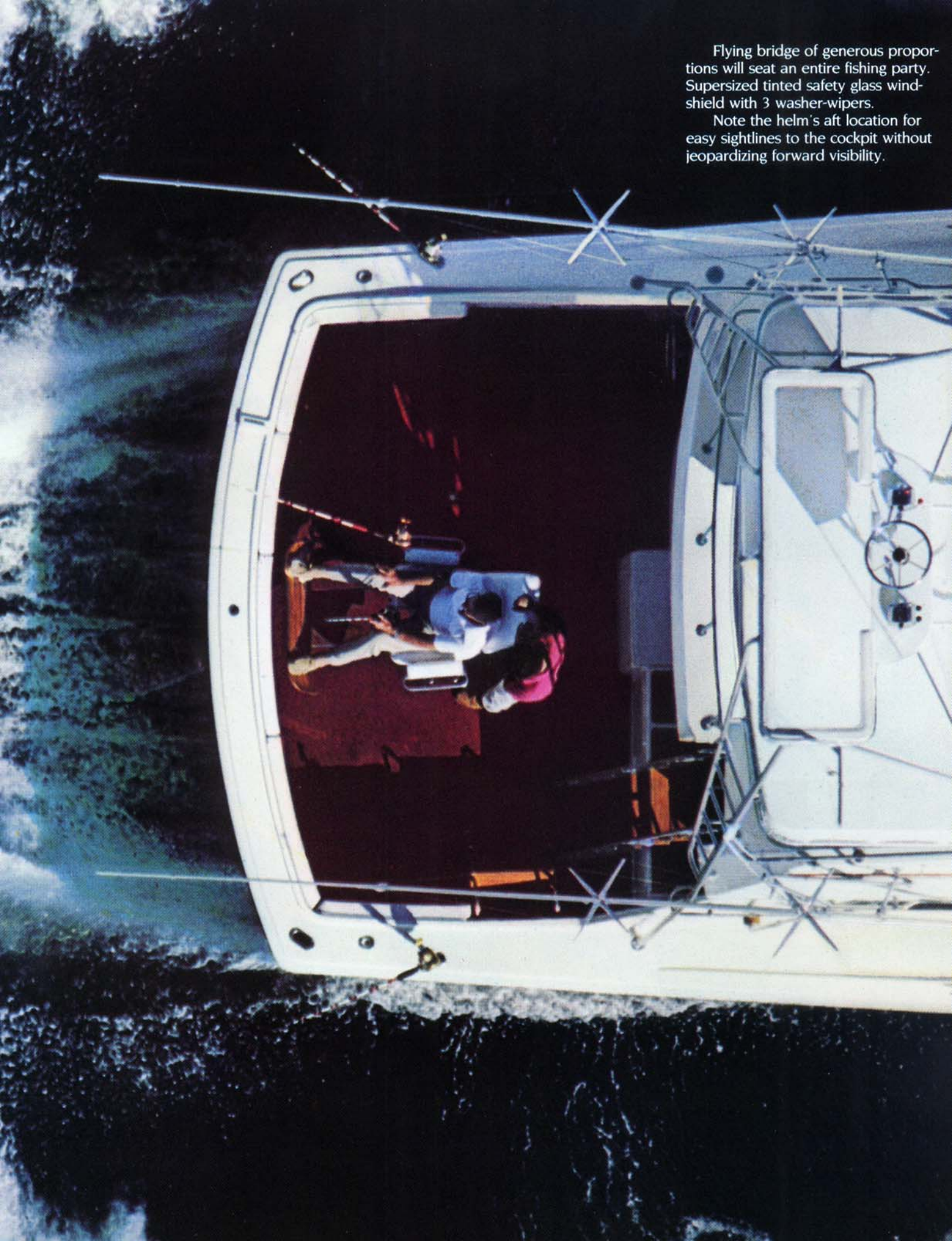
50 Convertible

THE WIDE BEAM HATTERAS 50

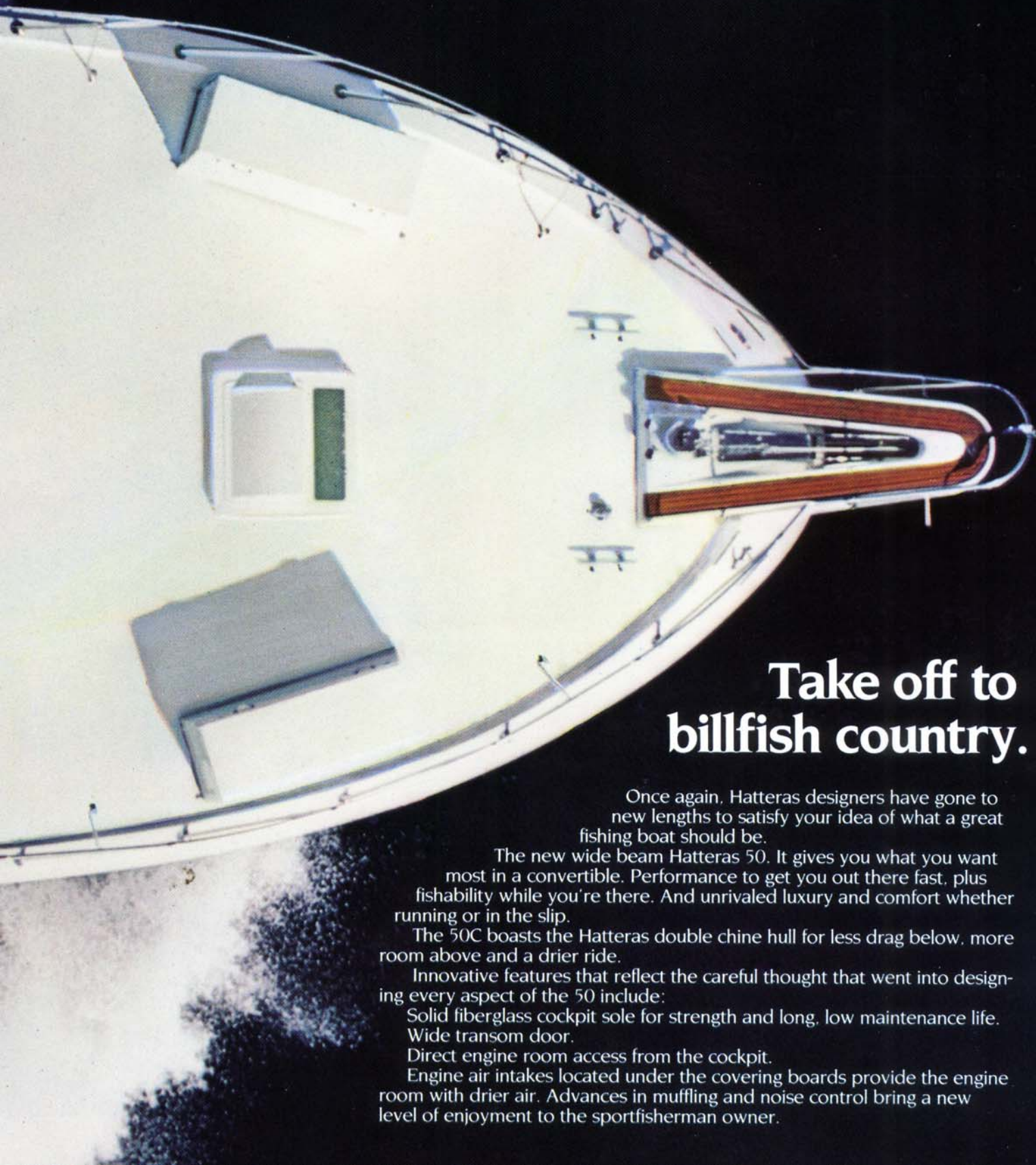


Flying bridge of generous proportions will seat an entire fishing party. Supersized tinted safety glass windshield with 3 washer-wipers.

Note the helm's aft location for easy sightlines to the cockpit without jeopardizing forward visibility.







Take off to billfish country.

Once again, Hatteras designers have gone to new lengths to satisfy your idea of what a great fishing boat should be.

The new wide beam Hatteras 50. It gives you what you want most in a convertible. Performance to get you out there fast, plus fishability while you're there. And unrivaled luxury and comfort whether running or in the slip.

The 50C boasts the Hatteras double chine hull for less drag below, more room above and a drier ride.

Innovative features that reflect the careful thought that went into designing every aspect of the 50 include:

Solid fiberglass cockpit sole for strength and long, low maintenance life.

Wide transom door.

Direct engine room access from the cockpit.

Engine air intakes located under the covering boards provide the engine room with drier air. Advances in muffling and noise control bring a new level of enjoyment to the sportfisherman owner.

Fishing adventure, with dockside luxury part of the reward.

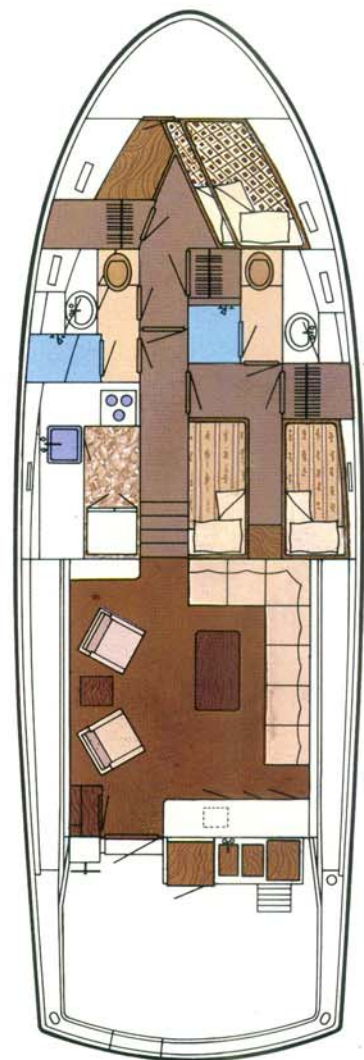
Anyone who invests in a great fishing boat of Hatteras magnitude deserves not merely accommodations, but a luxurious retreat. After a thorough review of the 50C, **Motor Boating and Sailing** magazine concluded "Outside she maybe king of bluewater, but inside she is the pampering queen."

Hatteras has always believed that. And the wide beam 50's generous proportions immediately identify her as the epitome of dockside luxury.

A comfortable salon. Two staterooms, each with private head. An optional salon galley configuration makes possible an additional two-berth stateroom. And throughout, heating and air conditioning that delivers whisper quiet comfort.

Uncommon luxury? Yes. But isn't that what you've come to expect from Hatteras?





STANDARD FLOOR PLAN.
Includes two staterooms, each with its own head, and galley below.

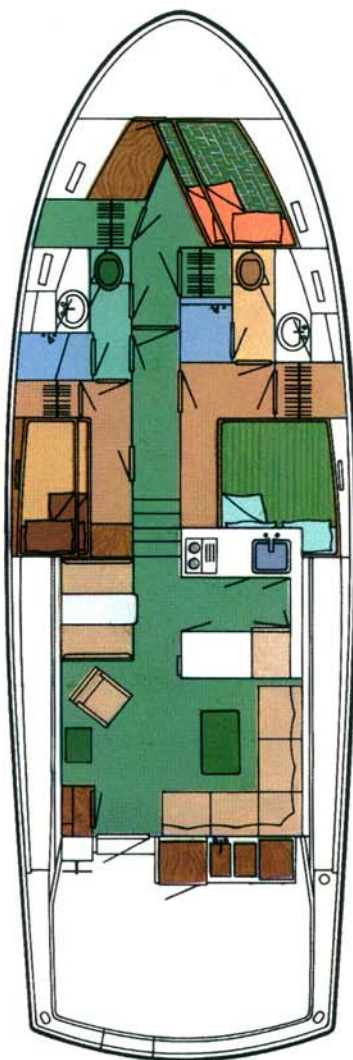


Main Salon of standard lower galley floor plan. Rich, warm tones of real wood paneling set a relaxing mood. To port, there's a chart table with storage drawer below.

Efficient Galley offers a complement of work-saving appliances. Plus generous storage and counter space.

Salon Bar of standard lower galley plan. Includes ice maker, recessed serving top, and storage below.

Optional Salon Galley opens up space for a third stateroom below. Galley (immediate left) features 2-burner range that vents cooking odors down and out. Combination microwave/convection air oven. And full-sized refrigerator/freezer. This space-saving layout creates a cozy dinette area (lower left page), elevated slightly for unobstructed sight-seeing.



OPTIONAL FLOOR PLAN

Includes three staterooms and deckhouse galley.



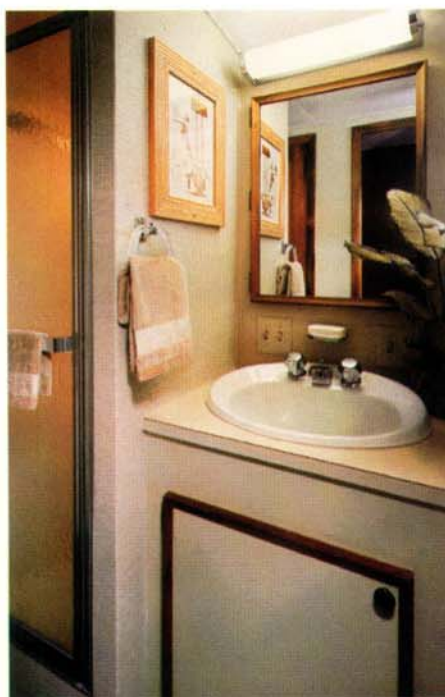
Master Stateroom, a quiet retreat. Your choice of side-by-side berths or (as shown in above floorplan) a queen-sized bed.

Bow Stateroom's Head with shower stall and door. Easy-care bulkheads are covered in attractive vinyl fabric.

Bow Stateroom offers hanging lockers, storage drawers under the wide lower berth, ventilating portlights, opening overhead hatch and access to the rope locker. One hanging locker will accommodate the optional washer/dryer.

Master Stateroom Head has stall shower, spacious cabinets and ventilating portlight.

Guest Stateroom (with optional salon galley configuration only). Berths with storage under lower berth, hanging locker and nightstand with 3 drawers.





More than just a good night's sleep, it's a sound investment.

Accommodating luxury is standard equipment on the Hatteras wide beam 50. For you and your guests.

Amenities abound. But don't think creature comfort is all there is to a Hatteras.

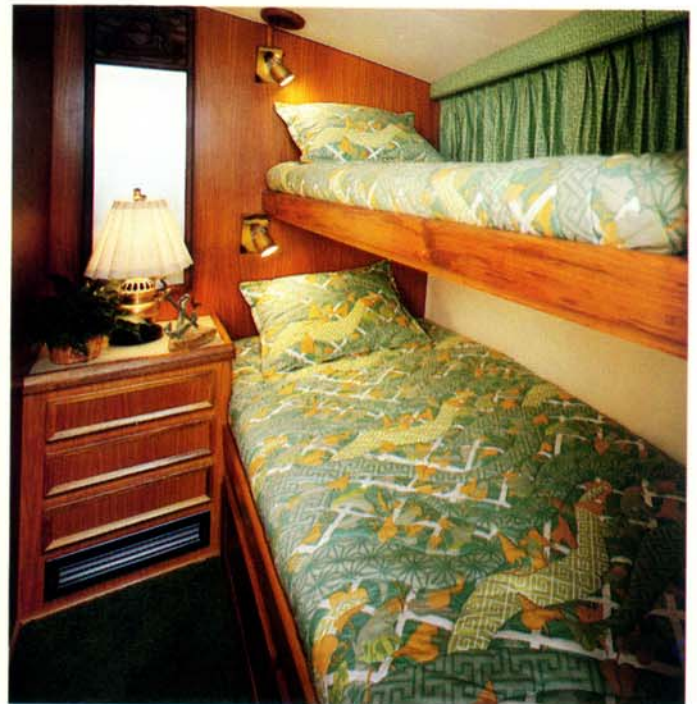
Craftsmanship is a most important part of any Hatteras yacht. Workmanship that refuses to settle for second best.

Without it, a convertible would be just a sport fisherman.

Hatteras designers and craftsmen apply exceptional skills to quality materials. The result is a great sea boat. And it's evident everywhere you look—from the fiberglass hull to the host of carefully engineered systems and components.

So after you've examined the 50's fishing potential, take a careful look at its investment potential. Because it's a Hatteras, it's one investment that won't keep you awake nights.

And after you've looked at our Hatteras 50, there's really only one logical conclusion—make it yours. Your Hatteras dealer is the place to begin.





AMF

Hatteras Yachts

High Point, North Carolina 27261 U.S.A.

50CV 15 0581
Printed in U.S.A.

AMF Hatteras Yachts reserves the right to make styling, design, equipment and construction changes without notice. Also, prices are subject to change without notice. Some items shown may be optional. Hatteras is a registered trademark of AMF, Incorporated. © 1980 AMF, Incorporated