

**The fiberglass Hatteras 50 foot Motor Yacht
and the New 50 foot Yachtfisherman**





More usable int



Interior space provides more comfort afloat

This 50 Ft. Motor Yacht or the Yachtfisherman are for yachtsmen who want the luxury of a custom-built boat, but who do not want to spend the money, time and effort to have a yacht built.

This 50 footer designed by Jack Hargrave, custom-boat architect, incorporates many features found only in custom-built 80 foot yachts. Today, you evaluate life afloat by the same standards you apply to living

ashore. You want comfortable, well appointed space for entertaining and dining, sleeping areas with privacy, and abundant storage.

You will find all of these elements for luxurious living on either of these 50 foot yachts.

Actually, you will find few yachts today (and then only *custom-built* boats at that), that combine so many *luxurious* details with so many *practical* features.



- ▲ The bow head has an electric toilet; a vitreous china lavatory; a medicine cabinet with mirror; shower and sump pump. There is ample storage space. Vinyl tile floor covering. Curtains on the screened port light; an exhaust blower; 110-volt outlets.



- ▲ The bow stateroom has upper and lower bunks, and sleeps fore-and-aft. It has a built-in chest of drawers; a large hanging locker. Rope locker provides additional storage space, also. Vinyl tile floor covering; Vicrtex wall covering; draperies on screened port lights, and an overhead screened hatch. 110-volt duplex outlet; 12-volt and 110-volt lights.

This view of the master stateroom shows the extremely large walk-in locker with louvered folding doors that automatically turns on a light in the locker when opened, ▼ and turns off when closed.



- ▲ The master stateroom head has private entrance. It has an electric toilet; vitreous china lavatory; 110-volt duplex outlet; 12-volt and 110-volt lights. A medicine cabinet with mirror; and storage space in the vanity and in the bulkhead back of it. The screened port light is also curtained; vinyl tile floor covering. The walls are Micarta covered. There is an exhaust blower. Adjoining shower has a built-in seat and a sump pump.

◀ The galley is equipped with a 220-volt 4-burner electric stove with oven. Hood over stove has an exhaust blower and light. There is a dishwasher and a disposal unit; stainless steel double sink with hot and cold water pressure system. The 14 cu. ft. refrigerator has a freezer. Parkwood counter top. There is ample storage space in the counter drawers and storage cabinets. The screened sliding windows are curtained. 110-volt duplex outlets; 110-volt and 12-volt light fixtures. Vinyl floor covering.



▲ Opposite the galley is a dinette that seats 4. It can be converted to a bed to sleep 2. The table has a Parkwood top. There are drawers beneath the seats, as well as storage area in the outward bulkhead. The sliding screened windows are curtained.

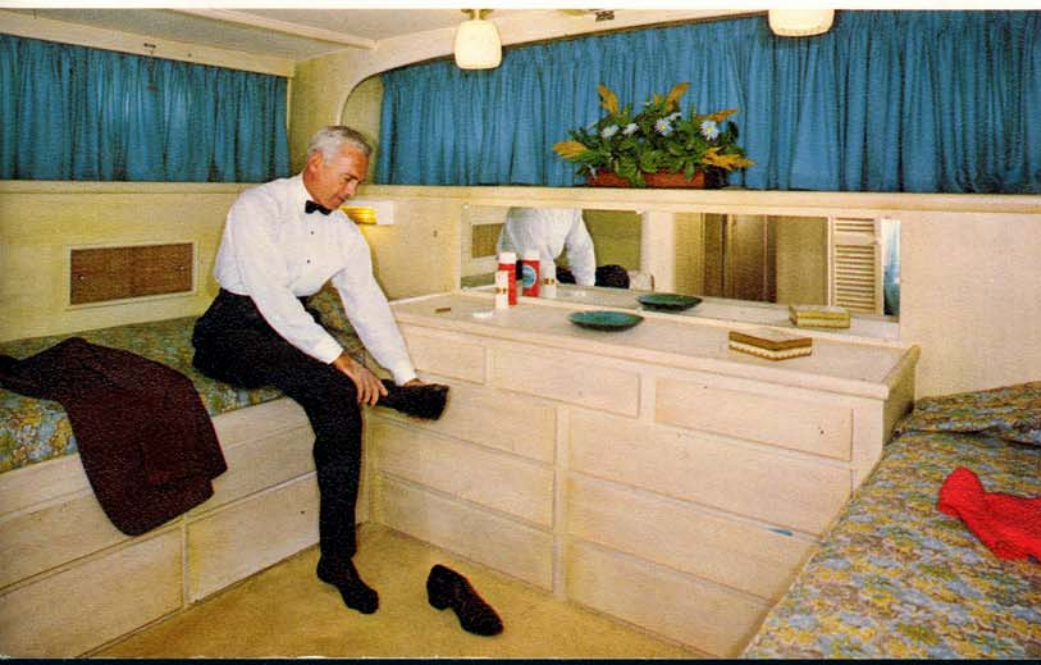
The guest stateroom head is spacious and has an electric toilet; vitreous china lavatory; exhaust blower; 110-volt duplex outlet; 110-volt and 12-volt lights. Micarta wall covering; vinyl tile floor covering; medicine cabinet with mirror; linen locker; curtains. Adjoining shower has built-in seat and sump pump.



◀ This view, looking aft in the main salon, shows the spaciousness of the salon which is larger than on many custom-built boats much larger than this 50 footer. The optional sofa bed converts to sleep 2. There are two side entry doors with overhead electric lights and the door to the aft deck also has an overhead light. There are 4 duplex 110-volt outlets for accessories; 4 decorator valance lights. The floor is Acrilan carpeted. The windows are tinted safety glass. Headroom is 6'4 1/2". Standard equipment includes the bar with ice-maker and sink; a stereo sound system with record and tape player that is piped throughout the boat; draperies; and a complete control station with a helmsman's seat. The windshield wipers are air operated.



▲ The guest stateroom has fore-and-aft twin beds with polyfoam mattresses; a built-in chest of drawers; hanging locker and curtained port lights. There is also storage area in the outward bulkhead. Hanging locker has automatic light. A full length mirror. Decorator ceiling light and bed lights. Acrilan carpeting; Vicrtex wall covering with Mahogany trim.



◀ The master stateroom in the Motor Yacht has twin beds with drawers underneath and 7" polyfoam mattresses. A large 9-drawer, built-in dresser and mirror. There is storage in both port and starboard bulkheads. Decorator lights and duplex 110-volt outlets for accessories. Screened port lights are curtained. There is also a screened overhead escape hatch.

In the Yachtfisherman, the master stateroom (not shown) has a double bed with drawers underneath and 7" polyfoam mattress; bedside chest with drawers; recessed dresser and a large hanging locker. Acrilan carpeting. Private entrance to the head which is the same as in the 50 Ft. Motor Yacht. The aft window serves as an escape hatch.

Completeness in equipment and detail gives this

Complete is the word most often used by purchasers in describing this Hatteras. (Just about the only things missing are electronic gear and furniture. And they're not included because we felt you'd rather select your own.)

The overall length is 50'3" with a 15'7" beam and a 4' draft. Fuel capacity is 581 gallons. Fresh water capacity 262 gallons. It is equipped with a 12KW Onan diesel generator in a soundproof case. The walk-in engine rooms aft of the galley are on either side, of the companionway with soundproof bulkheads. Each engine room has blower as well as direct air ventilation. There is plenty of space in which to service your engines.

The boat is equipped with a stereo sound system both record and tape which is piped throughout the boat and each pair of

speakers has an off-switch for control.

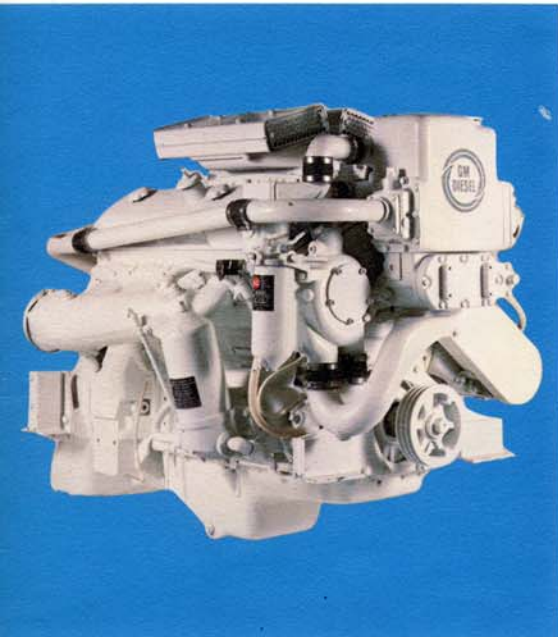
The spaciousness of this boat is due to fiberglass construction. Beams, ribs and frames are eliminated. The result is that there is more usable space in this 50 footer than in many 55 footers.

Much of this extra space is used for storage. There is 31 ft. of space in lockers and drawers throughout the boat.

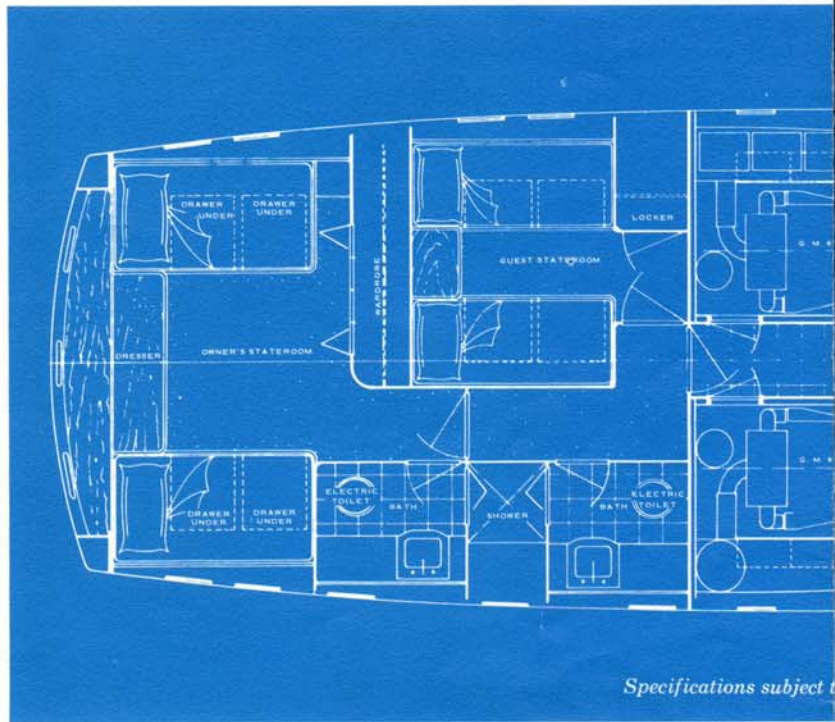
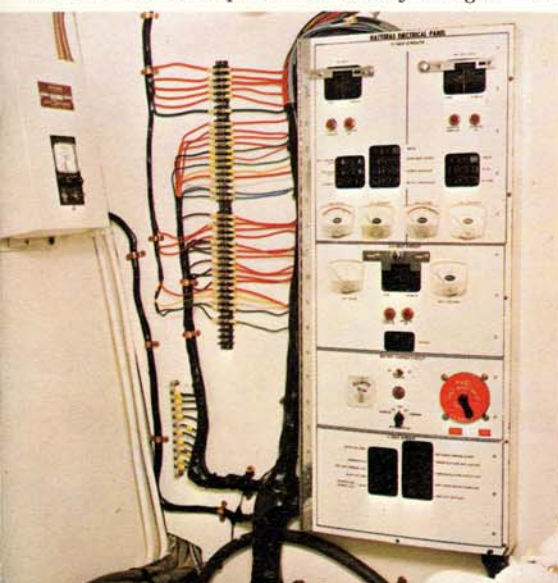
You can sleep ten with ease; 2 aft in the master stateroom; 2 in the guest stateroom; 2 in the bow; 2 in the dinette (fore-and-aft bunks); 2 in the salon on the optional sofa.

Interestingly, many of the owners of this Hatteras 50 employ a crew. They explain that they have simply not found it necessary. Certainly this is testimony to the Hargrave design that had ease of operation as an objective.

The Hatteras 50 is powered with twin GM 8V-71N engines. Each is installed in a spacious, soundproof engine room.

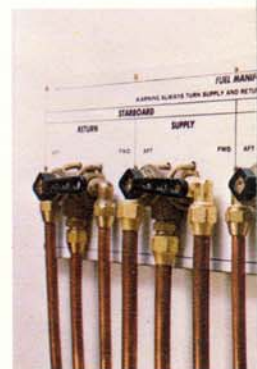
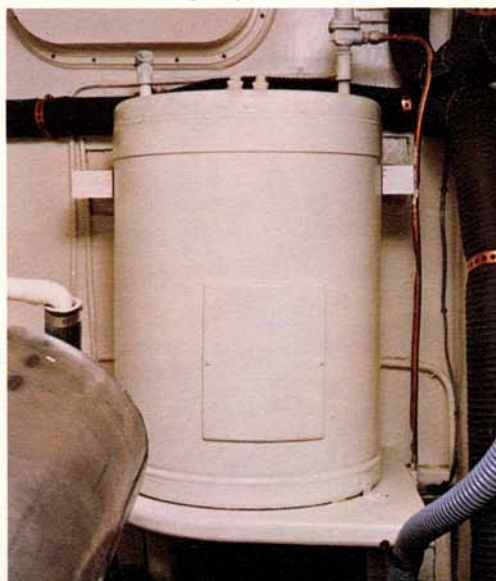


The master electrical panel shown below, provides central control and protection of the 12-volt; 110-volt; and the 220-volt A.C., all circuit breaker fused. At left is the 40-amp Sentron battery charger.



Specifications subject to change without notice.

The large hot water tank, combined with a pressure pump, assures adequate hot water for the galley and for the heads.



In the starboard engine room, the fuel lines are folded so that you can service both the two fuel tanks for the port engine.

50 footer customized luxury

uction.
you get
t craft.
7½ cu.

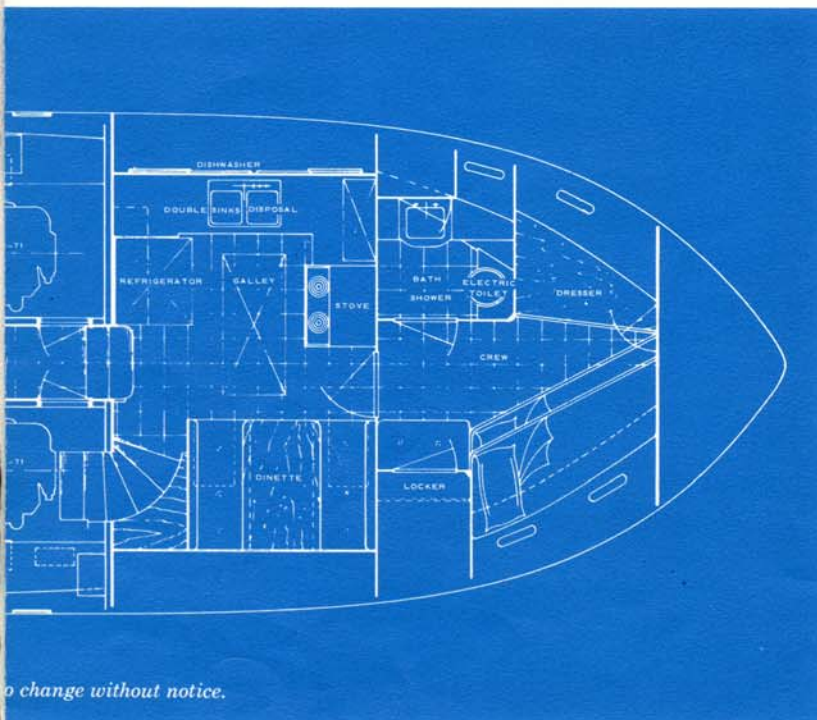
erroom;
(all in
ped.
do not
ound it
design

On the Cover are illustrated the 50 Ft. Flybridge Motor Yacht, and the 50 Ft. Yachtfisherman. (The fly bridge is optional on the 50 Ft. Motor Yacht.)

This photograph of the boats shows not only the spaciousness of the fly bridge, but the large aft deck on the motor yacht with the optional rattan chairs and table. Note the long aft extension of the fly bridge that provides a roof over the aft deck.

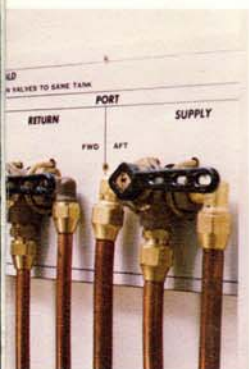
The Yachtfisherman is actually a 50 Ft. Motor Yacht with the fishing cockpit on the stern. There is room on the aft deck to place a fighting chair.

The illustration at the right shows an air conditioning unit in a cabinet adjacent to the control station in the salon, in which you can install a ship-to-shore radio. TV optional. ▶



to change without notice.

In the main salon, the cabinet housing the record player and a tape player for the stereo sound system, also contains an air conditioning outlet. ▼



the room is a fuel mani-
utilize the fuel from
either the starboard



In this view of the galley is shown the 14 cu. ft. electric refrigerator with the freezer compartment, as well as the row of storage cabinets above the refrigerator. ▼



The bar in the salon has a sink with running water, accessible by raising the top; an ice-maker and a storage compartment for bottles. ▼



***Hatteras
Yacht
Company***

HIGH POINT, NORTH CAROLINA

