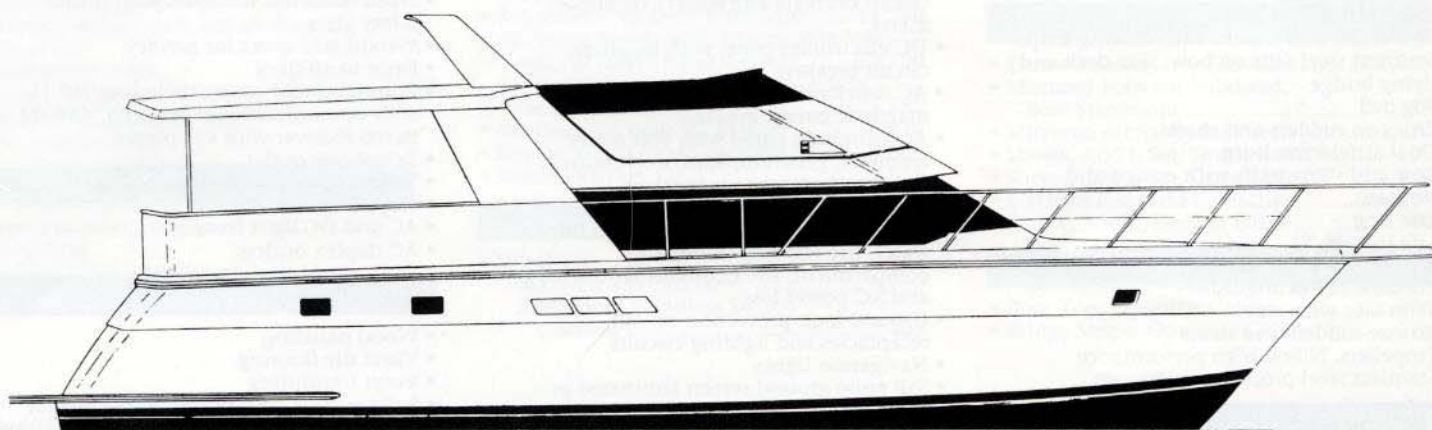


Hatteras

52 SPORT DECK MOTOR YACHT



Model Year 1998

Effective August 1, 1997
through July 31, 1998

52 SPORT DECK MOTOR YACHT^(A) Specifications

Length Overall ^(B)	52'2"	15.90 m
Beam	16'0"	4.88 m
Draft ^(C)	5'2"	1.58 m
Freeboard Forward ^(C)	6'11"	2.11 m
Freeboard Aft ^(C)	5'11"	1.80 m
Headroom Most Areas	6'6"	1.98 m
Freshwater Capacity ^(C)	187 Gals	708 ltr
Fuel Capacity ^(C)	914 Gals	3,460 ltr

Holding Capacity ^(C)	100 Gals	379 ltr
Weight Displacement ^(C)	66,000 Lbs	29,900 kg
Height Above Waterline to		
• Top of Flying Bridge ^(C)	14'2"	4.32 m
• Top of Arch ^(C)	16'9"	5.11 m
Twin D.D. 8V-92TA DDEC Diesel Engines	760 BHP	
CAT 3406E Diesel Engines	800 BHP	

STANDARD EQUIPMENT^(A)

Exterior Finish

- Isophthalic gelcoat, interior layer, black
- Isophthalic gelcoat, exterior layer, white
- Blister-resistant Vinyl Ester resin in hull skin coat
- Topsides and superstructure, polyurethane coating
- Polymer/copper based anti-fouling bottom paint
- Boot stripe, polyurethane coating
- Decks, non-skid surface, polyurethane paint with polymeric beads

Hardware and Miscellaneous

- All hardware chrome on brass or stainless steel
- Swim platform with reboarding ladder
- Fiberglass pulpit with stainless steel anchor chute and roller
- Anchor, anchor line and deck hawse pipe
- Two stern cleats
- Four springline cleats
- Bow cleats and chocks with chafing strips
- Stainless steel rails on bow, side-deck and flying bridge
- Fog bell
- Zincs on rudders and shafts
- Dual air/electric horn
- Bow and stern staffs with ensign and pennant
- Life ring
- Life jackets (8)
- Nylon mooring lines (4)
- Portable fire extinguishers
- Trim tabs with zincs
- Bronze rudders and struts
- Propellers, Nibral high performance
- Stainless steel propeller shafts

Engine Compartment and Bilge

- DC enclosed lights
- DC bilge blowers
- Twin diesel, freshwater-cooled main engines with marine gears, neutral interlocks, hour meters, alternators, fuel filters, seawater strainers and exhaust silencers
- 20kW freshwater-cooled diesel generator^(D) with seawater strainer, remote start, hour meter, water lift muffler and sound enclosure
- Fixed fire extinguishing system for engine compartment with automatic and remote manual controls, plus audible and visual discharge signals
- Pressurized freshwater system with 20-gallon electric water heater
- Water fill hose for engines and generator
- Dockside water connection with pressure-reducing valve
- Automatic, electric bilge pumps
- Ball-valves on all underwater through hull fittings with electrical bonding throughout
- U.L. approved fiberglass reinforced fuel tanks
- Sewage holding tank plumbed for dockside discharge, with level indicator light in head
- Fuel filter/water separator, generator

- Duplex fuel filters/water separators with bypass manifold, engines
- Fuel priming pumps, engines
- Fuel tank selector manifold with gauges at instrument panel

Electrical Systems

- Two 24 volt banks of heavy duty, 12 volt marine batteries
- 240 volt automatic battery charger, 60 Hz
- Battery paralleling system with switch at control console
- Transformer connected shoreline inlets
- Air conditioning with reverse-cycle heating
- Two 240 volt, 50 amp, fused electrical inlets with cords, one each port and starboard
- AC and DC light fixtures
- AC duplex outlets
- Battery control panel with fusing and isolation switches
- DC distribution panel with magnetic circuit breakers and battery condition meter
- DC electronics panel with magnetic circuit breakers
- AC distribution panel with thermal/magnetic circuit breakers
- AC switching panel with volt meter, ammeter, generator start/stop controls and interlock selector breakers
- Systems monitor with visual and audible signals for engine and gears, high bilge water, fire warning in engine compartment, fire extinguisher discharge, and AC power loss
- Ground fault protection on AC receptacles and lighting circuits
- Navigation lights
- SSB radio ground screen laminated in cabin top
- Telephone/CATV inlet

Flying Bridge

- Molded fiberglass
- Bench seat with vinyl-covered polyfoam cushions
- L-shaped lounge with vinyl-covered polyfoam cushions and storage below
- Stainless steel grab rails and stanchions
- Tinted acrylic windshield
- Control station with all necessary switches and dimmable lighted instruments
- Engine synchronization control
- Two recessed electronics boxes in console with plexiglass weathershields
- Compass with dimmable light
- Fuel level gauge
- Dual lever clutch and throttle controls (electronic on DDEC)
- Hydraulic steering
- Helmseat and companion seats, both adjustable
- Sliding hatch and door to aft deck
- DC receptacle

Aft Deck

- Molded fiberglass
- Wing doors

- Hardtop with radar arch
- Steps to flying bridge
- Fiberglass storage console
- Door to deckhouse
- Overhead light
- Door to sport deck

Sport Deck

- Molded fiberglass with non-skid sole
- Freshwater wash down outlet with hose connection
- Door to aft deck

Deckhouse — Salon

- Wood paneling
- Carpeting
- Vinyl headlining
- U-shaped lounge with storage
- Coffee table
- Upholstered chair
- Lambrequins with blinds and upholstered valance boards
- Fixed frameless windows with tinted safety glass
- Windshield cover for privacy
- Door to aft deck
- Entertainment center including 20" TV with omni-directional antenna, AM/FM stereo receiver with CD player
- Telephone outlet
- Solid surface countertops
- Steps to galley/dinette
- AC and DC light fixtures
- AC duplex outlets

Galley/Dinette

- Wood paneling
- Vinyl tile flooring
- Vinyl headlining
- Solid surface countertops with integral sink and storage cabinets made of finished wood
- Water level gauge
- AC refrigerator/freezer
- AC two-burner cooktop
- Dishwasher
- Microwave/convection oven
- Dinette, with storage drawers, converts to berth
- Storage outboard of dinette
- Washer/dryer
- AC and DC light fixtures
- AC duplex outlets
- Engine compartment access thru hinged companionway stairs

Master Stateroom

- Wood paneling
- Carpeting
- Vinyl headlining
- Ventilating portlight with screen
- Large portlight in aft bulkhead
- Lambrequins with pleated shades and upholstered valance boards
- Tapered queen berth with upholstered headboard and storage drawers underneath
- Polyfoam mattress, spread, pillows, pillow shams, mattress pad and sheets^(E)
- Nightstands with storage compartments and high pressure laminate countertops

- Cedar-lined wardrobes with doors and automatic lights
- Full-length mirror
- Dresser with drawers
- Private access to head
- AM/FM stereo receiver with CD player
- 13" color TV with MATV outlet
- AC and DC light fixtures
- AC duplex outlets

Aft Guest Stateroom

- Wood paneling and vinyl wallcovering
- Carpeting
- Padded vinyl covering on hullside
- Vinyl headlining
- Upper and lower berths with storage under lower berth
- Polyfoam mattresses, spreads, pillows, pillow shams, mattress pads, and sheets^(B)
- Ventilating portlight with screen
- Hanging locker with door, light, and drawers below
- AC and DC light fixtures
- AC duplex outlet
- Full-length mirror
- Stereo speakers with volume control

Master Head and Guest Heads

- Vinyl tile flooring
- Vinyl headlining
- Base cabinet with storage
- Solid surface countertop with integral sink
- Vinyl wallcovering
- Stall shower with sliding door and automatic sump pump
- Storage cabinet with mirror doors
- Towel bar
- Freshwater toilet
- Recirculating fan
- AC and DC light fixtures
- AC duplex outlet

Bow Guest Stateroom

- Wood paneling and vinyl wallcovering
- Carpeting
- Padded vinyl covering on hullside
- Vinyl headlining

- Tapered queen berth with upholstered headboard and storage drawers underneath
- Polyfoam mattress, spread, pillows, pillow shams, mattress pad, and sheets^(B)
- Rope storage locker
- Hanging locker with door and automatic light, starboard
- Locker, port
- Built-in dressers, port and starboard
- Screened overhead hatch with privacy cover
- Nightstands, port and starboard
- AC and DC light fixtures
- AC duplex outlets
- Stereo speakers with volume control
- Full-length mirror
- Private access to head

Decor Packages

- Black Sea
- Red Sea
- Mediterranean Sea
- Caribbean Sea

OPTIONAL EQUIPMENT^(A)

Base Options

- Guest Stateroom in lieu of Standard Dinette^{(F)(G)} P.O.R.
- L-Shaped Dinette, Salon^{(F)(H)} P.O.R.
- Single Stateroom Aft^(I) N/C
- Centerline Berth, Master Stateroom^(I) N/C
- Permanent Aft Deck Enclosure^(F) 14,290
- Aft Wing Boards with Sliding Windows and Aft Curtain Enclosure^(F) 12,100
- Air Conditioning with Reverse-Cycle Heat — Aft Deck^(F) 5,750
- Aft Deck Bar with Ice Maker^(F) 2,240
- Engine Room Detail Package^{(F)(I)} 2,880
- Water Delivery Kit 1,955

Mechanical and Miscellaneous Equipment

- Windlass:
Maxwell VWC-2200^(I) 8,750
Additional Windlass Switch
Control 405

- Anchor, with Chocks, Extra 930
- Davit, Low-Profile, 1000 Lb, 110 Volt 16,930
- Cradle, Aluminum; on Hardtop for Dinghy^(K) P.O.R.
- Sea Ladder with Storage Brackets 1,455
- Oil Changing System 1,495
- Wash Down, Freshwater, Foredeck 825
- Wash Down, Seawater, One Outlet 825
- Portable Halon Fire Extinguisher, Add'l. (each) 955
- Prop Puller/Pusher 950

Canvas

- Bimini Top, Folding with Boot 3,635
- Flying Bridge Enclosure, 4 Sides 5,060
- Flying Bridge Cover 1,625
- Flying Bridge Instrument Cover 285
- Flying Bridge Helmseat Cover (each) .. 220
- Flying Bridge Lounge Cover 1,310
- Aft Deck Enclosure 3,690

Electrical and Appliances^(B)

- VCR, Salon^(L) 745
- Ice Maker, Salon 1,350
- 13" TV, Bow Stateroom 1,780
- Garbage Disposal 755
- Telephone Outlet, Add'l., (each) 390
- TV Outlet, Add'l., (each) 510
- Receptacle, Weatherproof, 120V 425
- European Conversion Package, 220v/50Hz P.O.R.
- Retractable Shore Cord, 240v/50a, Single (Starboard only) 4,240
- Searchlight, Remote-Controlled 3,495

Decor and Furnishing

- Throw Pillows 2,365
- Mirrored Forward Bulkhead, Bow Stateroom 1,375
- Mirrored Aft Salon Bulkhead 1,420
- Sheets, Add'l. Set, Single Berth^(L) 105
- Sheets, Add'l. Set, Queen Berth^(L) 140
- Mattress Pad, Add'l., (each) 115
- Pillow, Add'l., Dacron Filled 40

Paint^(B)

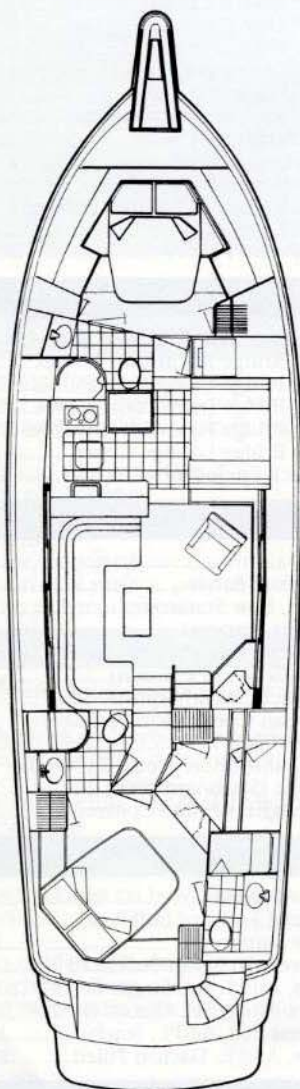
- Boot Top, Optional Color 405
- Bridge Stripe, Optional Color 710

NOTES TO SPECIFICATIONS AND EQUIPMENT

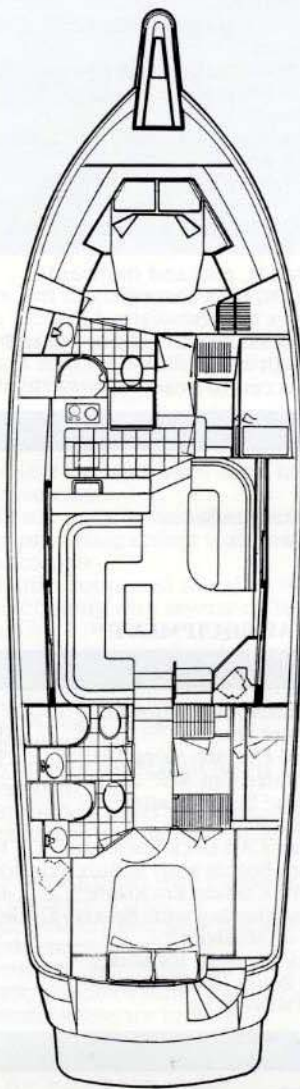
- (A) Right is reserved to make changes at any time, without notice, in prices, material, specifications and equipment. Orders are accepted subject to prices prevailing at time of shipment. Orders requesting any material and/or equipment which differs from that selected by Hatteras as standard or optional for this model will be considered a custom change and will require additional charges. Prices shown for many options may apply only if ordered prior to start of production. Once production begins, orders for such options may require additional charges due to non-standard installation requirements and/or lead times. In order to show equipment size and location, line drawing may include some optional items. Specifications, standard equipment and optional equipment effective with boats sold at August 1, 1997, through July 31, 1998, Hatteras Base Prices.
- (B) Length overall does not include the swim platform or bow pulpit.
- (C) Weight, draft, freeboard and height are based on an estimate of model's

- displacement with largest engines available. Weight is estimated with fuel, holding and freshwater tanks half filled. Draft and freeboard are estimated with all tanks filled. Heights are estimated with all tanks empty. Actual figures will vary depending on production tolerances, equipment, supplies and stores on board, as well as operational and sea conditions. Capacities of tanks are estimated to be total capacity of all tanks normally furnished in this model. Usable capacities will vary depending upon conditions.
- (D) Generator is not intended to supply power for all standard and optional accessories simultaneously. Load must be limited to generator output rating.
- (E) One set of sheets includes: one bottom sheet, one top sheet, pillowcase(s).
- (F) Option must be ordered prior to start of production. Price shown reflects cost of scheduled installation requirements. A late request for this option will require an additional charge.
- (G) The forward guest stateroom option includes a "combo" washer/dryer unit

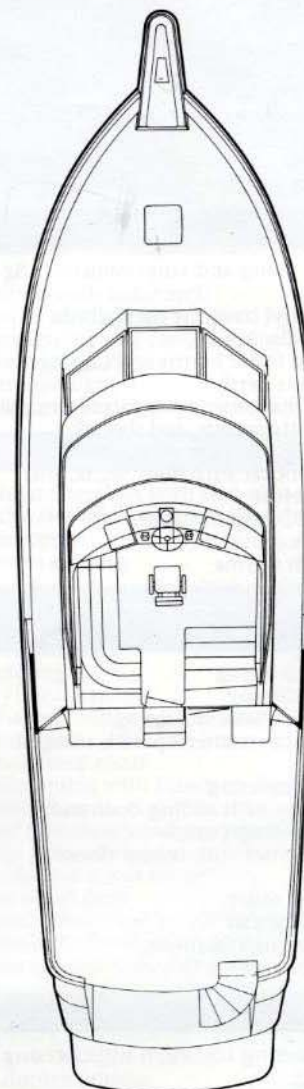
- located below the hanging lockers and opens into the companionway.
- (H) Available only with optional forward guest stateroom.
- (I) Option specifics: cosmetic layer of fiberglass mat, painted white Awlgrip; dripless shaft and rudder seals; painted rudder shelf and white wire trays. In lieu of standard: Aeroquip fuel and steering lines; external high-speed sea water strainers on engines; and fluorescent lighting.
- (J) This model for use with chain and includes 300 ft. of 1/4" Acculoy chain.
- (K) Hardtop not designed to support additional weight without use of Hatteras-engineered support beams in their proper locations. Contact Hatteras Yachts for instructions prior to installation of any equipment on hardtop.
- (L) Depending upon component(s) selected, cabinet may require modification; however, modification may not accommodate all components offered.



STANDARD ARRANGEMENT



OPTIONAL ARRANGEMENT



BRIDGE

HATTERAS LIMITED WARRANTY

Hatteras Yachts warrants that this yacht is free from defects in material and workmanship at the time the yacht is delivered to the first retail purchaser. If a defect in material or workmanship in the hull structure is discovered within five (5) years, or in a non-structure component (manufactured by Hatteras) within one (1) year ("the applicable Warranty Periods") after the date the yacht is delivered, Hatteras will repair or replace, at its sole option, any part of the yacht found to be defective in materials or workmanship during the applicable Warranty Period. Your sole and exclusive remedy is the repair or replacement of items covered by this warranty.

Any remaining portion of the applicable Warranty Periods are transferable to a subsequent owner providing the yacht is listed for sale and sold through an authorized Hatteras dealership, and proper application for transfer is made to Hatteras Yachts.

You must contact an authorized Hatteras dealership within the applicant's warranty period to obtain warranty service. The Hatteras dealer will carry out the warranty procedures on your behalf. All warranty work will be performed at an authorized dealership, at the Hatteras factory, or at another repair facility that Hatteras selects. You are responsible for the expense associated with transporting the yacht to and from the repair facility.

An action for breach of warranty shall be barred unless it is commenced within four (4) years from the date the cause of action accrues. An action for breach of any duty or obligation to repair or replace shall be barred unless it is commenced within one year from the date the cause of action accrues, regardless of the time remaining in the Warranty Period.

This warranty DOES NOT COVER:

1. Any yacht, equipment, or component that has been subjected to or affected by any unauthorized alteration or modification.
2. Engines, transmissions, controls, propellers, batteries, appliances, other equipment, accessories, or components which are not manufactured by Hatteras, whether or not warranted by other manufacturers.
3. Gelcoats, paints, varnishes, or other finishes (including blistering, cracking, crazing or discoloration), fabrics, canvas, stainless steel, or any plated finishes.
4. Any yacht which has been misused, used in a negligent manner, used for racing, used for rental, charter, military or other commercial purposes, used without normal maintenance, operated contrary to any instructions furnished by Hatteras, or operated in violation of any Federal, State, Coast Guard or other governmental agency laws, rules or regulations.
5. Weight, draft, speed, fuel consumption or any estimated performance characteristic.
6. Loss of time, inconvenience, rental charges, travel expense, loss of use, dockage fees, towing and storage charges, loss of or damages to personal property, or other remedies not specifically allowed.

Hatteras®
The World's Premier Yacht Builder

Hatteras Yachts
110 N. Glenburnie
New Bern, NC 28560
(919) 633-3101
Fax (919) 633-2046
e-mail: mkt@hyachts.com