

The fiberglass Hatteras 53 Convertible







When you take the helm of this Hatteras 53 Convertible and head out to the open sea you'll thrill to its smooth powerful, easy behavior in any weather.

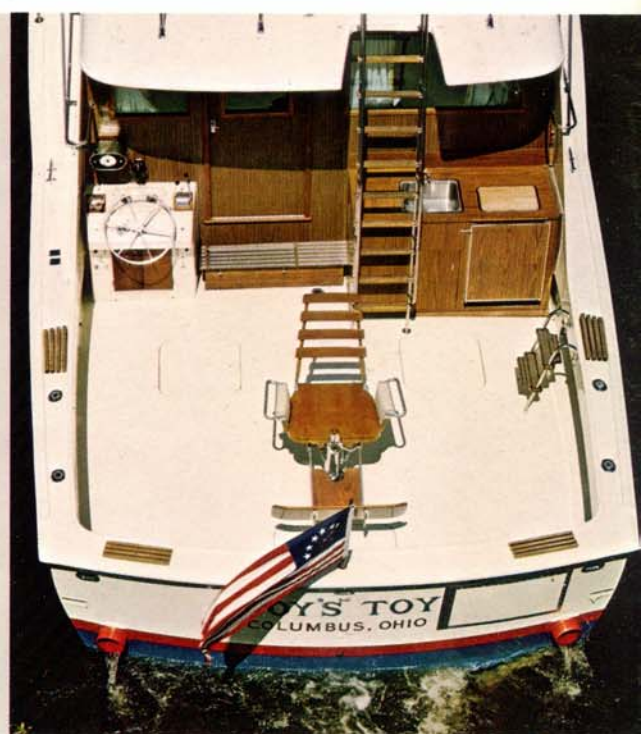
The 53 Convertible is currently the largest of the Hatteras Convertibles. Beam is a full 16 feet. This new 53 is probably the finest production built sport fishing boat. Already available feed-back from owners proclaim its virtues. This yacht is extremely seaworthy and can take heavy seas very well. Owners report excellent performance in severe rough water conditions. Twin diesel engines each to 500 HP, fit into the spacious engine room.



The large bridge has the helm stationed far enough aft so that the fishing captain can look directly down into the cockpit—can observe the angler's activity with ease.

It has a complete command station and also comfortable seats so the skipper can have some sun-loving companions.

The cockpit is 13 ft. 3 in. wide by 11 ft. 2 in. Shown in the photograph is the lower control station and the optional refrigerated bait and tackle box. There's room for two sailfish chairs in addition to the fighting chair. There's room for working in the cockpit. Also, note on the starboard side of the transom is an optional gate so that you can float a big fish into the cockpit.





Looking forward in the Salon-Galley shows the luxurious appearance of this spacious deckhouse with the galley units concealed in easy access cabinets. Another example of Hatteras' continuing refinement.



Alternate arrangement

◀ For those who prefer the galley below in place of the guest stateroom, you have a combination dinette and galley. There's an electric stove with oven, stainless steel sink and ample storage space; also, a 15.9 cu. ft. electric refrigerator with freezer.

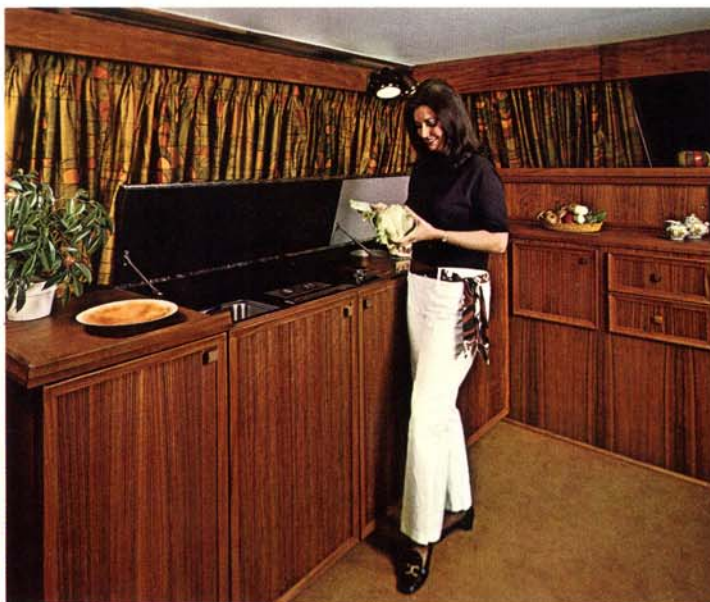
With the galley below, the deckhouse is extremely large—11 ft. 8 in. from window to window (port to starboard) and 18 ft. from aft bulkhead to center of windshield. There's over 100 sq. ft. of window area for all-around viewing and light. On the sides are sliding windows with screens. ▶

Salon-Galley attractively combined for convenience

There are two floor plan arrangements for this 53. The *standard* plan features a galley in the deckhouse which is popular with women as it gives them a chance to be a part of the party when they have to prepare meals or a snack for entertainment. All galley units are enclosed in cabinets. In this way, the deckhouse has a more

attractive appearance. The interior woodwork is a beautifully grained African veneer. Carpeted throughout except heads and bow stateroom. Completely air conditioned. Headroom in most areas is 6 ft. 7 in. With the galley in the deckhouse you have three staterooms, each with a private head and shower.

On the starboard forward side are a matching freezer, and refrigerator (110 volt), each 6.6 cu. ft. The top of the cabinet provides ideal space (54 x 28 inches) for decorative accessories.



The cabinet enclosing the galley is 39 inches high. The first section contains an ice maker accessible by a door in the front. The next sections contain two stainless steel sinks with hot and cold water. There's a garbage disposal unit; and also a Nu-tone food center. Storage space beneath the sinks is 12.9 cu. ft. The forward section of the cabinet houses the electric stove with oven. Each section has a top that raises and a door in front. The top of the forward section (6 ft. x 32 in.) provides working counter. It can be used for appliances or for decorative accessories. There is 11 cu. ft. of storage space in a locker and two drawers. Also a recessed garbage container. 110 volt duplex outlets are in convenient locations.

This entertainment center houses an air conditioning unit, bottle storage and two drawers for storage. The stereo tape player is connected to speakers throughout the yacht.





◀ **The guest stateroom** has upper and lower fore-and-aft 6 ft. 5 in. bunks with comfortable foam mattresses. There is 21 cu. ft. of space in the hanging locker; a built-in stand with four drawers and two drawers beneath the lower bunk.

Screened portlight; an overhead screened hatch for ventilation; a bed light over each bunk; and two 110 volt outlets are standard. Carpeted floor. Stereo speaker. Full length mirror.

The guest head has a private entrance to the stateroom and an entrance from the companionway so that it can serve as a powder room for the deckhouse. It has an electric toilet; a stall shower; 3 cu. ft. of storage space in the vanity and medicine cabinet; a vitreous lavatory; two 110 volt outlets; screened portlight.



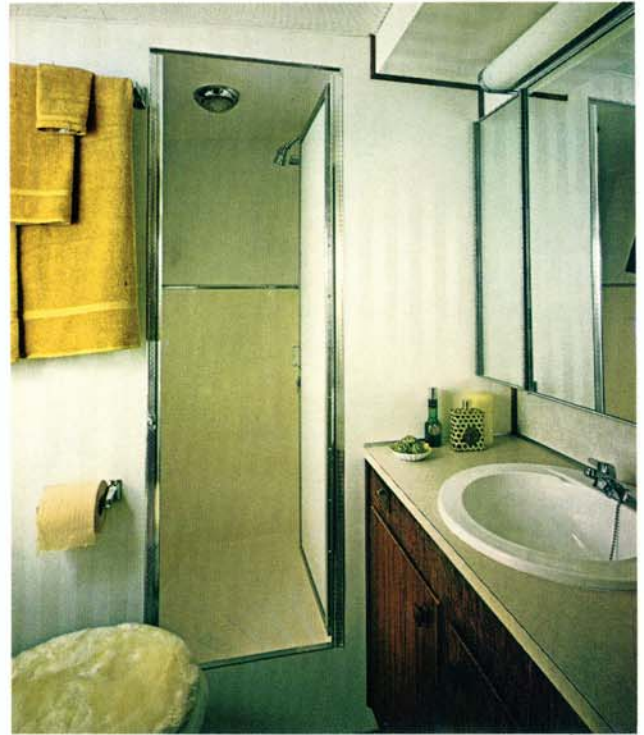
Three private staterooms

The master stateroom has two fore-and-aft 6 ft. 5 in. bunks with comfortable foam mattresses. There is 39.4 cu. ft. of storage space in a hanging locker and eight drawers.

A screened portlight and an overhead screened hatch provide natural light and ventilation. There are also two bunk lights, and two 110 volt outlets. Carpeted floor; stereo speakers.

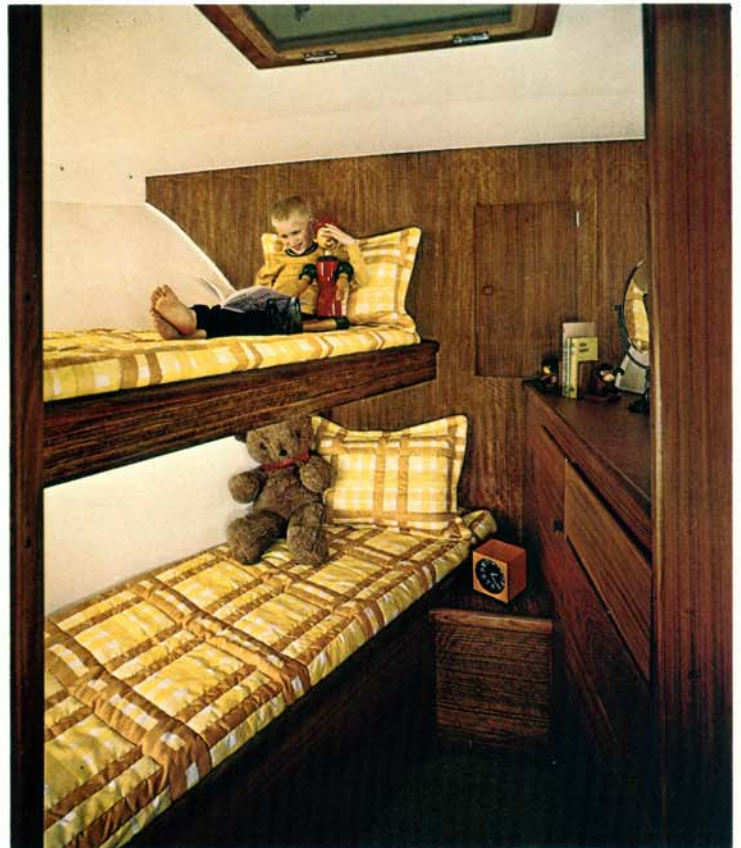
A full-length mirror is on the door to the head.

The master head has 7 cu. ft. of storage space, including linen locker and medicine chest; vitreous lavatory; electric toilet. Man-size shower room with dome light; hot and cold water pressure system; two 110 volt outlets; screened portlight.



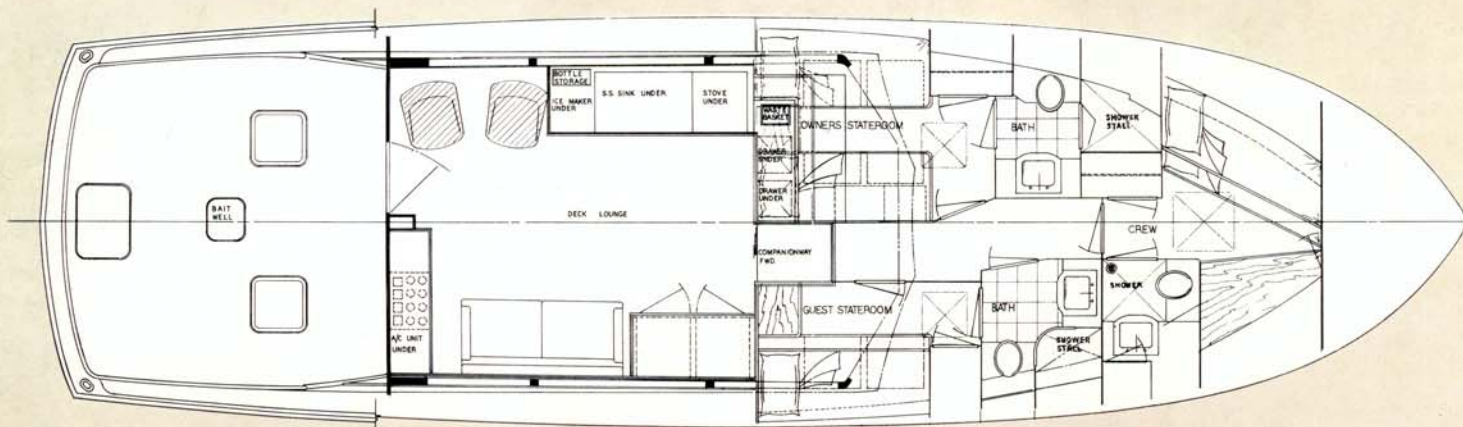
The bow stateroom has two 6 ft. 5 in. fore-and-aft bunks. There are portlights and an overhead ventilating screened hatch; two 110 volt outlets; a hanging locker; 3-drawer chest and drawers under the bunk. With rope locker there's 174.2 cu. ft. of storage space.

The bow head (below) has an electric toilet; vanity with vitreous lavatory; screened portlight. There is 5¾ cu. ft. of storage space. Has shower with curtain.



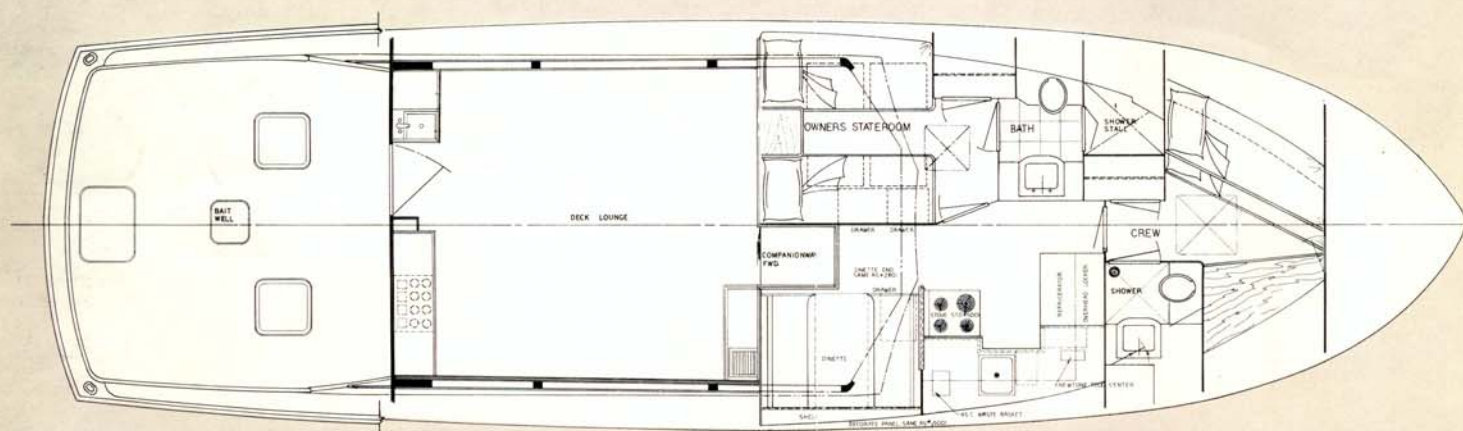
Hatteras 53 Convertible alternate arrangements

(Some items optional)



STANDARD PLAN

(Some items optional)



ALTERNATE PLAN

This 53 fiberglass Hatteras Convertible is a yacht that will please the sportsman and his wife.

It combines all the living conveniences and comfort desired for family cruising and for entertaining.

When converted to a Sportfisherman with the addi-

tion of outriggers, fighting chair and the optional bait and tackle box with freezer, it becomes a real tournament fishing machine.

Complete is the word most often used by owners of this 53 Hatteras.

Hatteras Yacht Division, North American Rockwell, High Point, North Carolina reserves the right to make styling, design and construction changes without notice. Also, prices are subject to change without notice.



Hatteras Yacht Division
North American Rockwell