



AMF
Hatteras

53 Motor Yacht



Completeness in equipment and detail gives this fiber

Complete is the word most often used by purchasers in describing this Hatteras. (Just about the only things missing are electronic gear and furniture. And they're not included because we felt you'd rather select your own.)

The overall length is 53'1" with a 15'10" beam and a 4' draft. Fuel capacity is 550 gallons. Fresh water capacity 250 gallons. It is equipped with a 15KW Onan diesel generator in a soundproof case. The walk-in engine rooms aft of the galley are on either side of the companionway with insulated bulkheads.

The boat is equipped with a stereo tape sound system, which is piped throughout the boat and each pair of speakers has an off-switch for control.

The spaciousness of this boat is due to fiberglass construction, beams, ribs and frames are eliminated. The result is that you get more usable space in this 53 footer.

Much of this extra space is used for storage. There is 329½ cu. ft. of space in lockers and drawers throughout the boat.

You can sleep ten with ease; 2 aft in the master state-



erglass Hatteras 53 Motor Yacht customized luxury

room; 2 in the guest stateroom; 2 in the bow; 2 in the dinette (all in fore-and-aft bunks); 2 in the salon on the optional sofa bed.

Interestingly, many of the owners of this Hatteras 53 do not employ a crew. They explain that they have simply not found it necessary. Certainly this is testimony to the design that had ease of operation as an objective.

The 53 Motor Yacht is for yachtsmen who want the luxury of a custom-built boat, but who do not want to spend money, time and effort to have a yacht built.

Designed by Jack Hargrave, it incorporates many features found only in custom-built 80 foot yachts. Today, you evaluate life afloat by the same standards you apply to living ashore. You want comfortable, well appointed space for entertaining and dining, sleeping areas with privacy, and abundant storage.

You will find all of these elements for luxurious living on this 53 foot yacht.

Actually, you will find few yachts today that combine so many luxurious details with so many practical features.



This view, looking out from the cabin, is larger than the motor yacht's interior. The sofa bed converts into a bed; the 110-volt outlets are built into the glass. Headroom is 6'6". The sink; a toilet; and the wipers are air conditioned.

(At left) In the motor yacht system, also called the motor yacht system, also called the motor yacht system.

(At far left) The motor yacht system, also called the motor yacht system, also called the motor yacht system.

(At right) A large built-in motor yacht system, also called the motor yacht system, also called the motor yacht system.



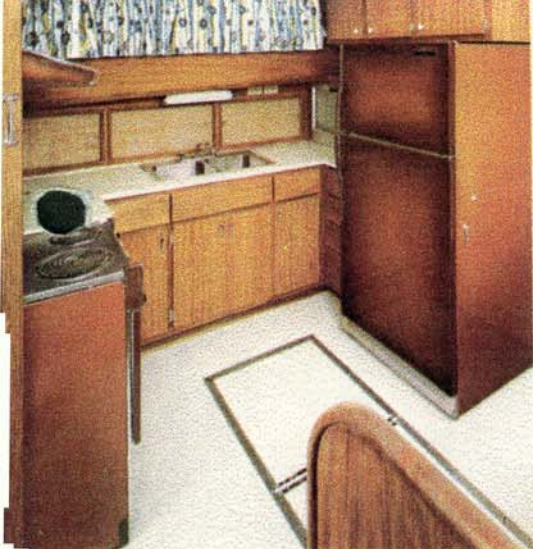
Looking aft in the main salon, shows the spaciousness of the salon which on many longer custom-built boats constructed of wood. The optional ports to sleep 2. There are two side entry doors with overhead electric door to the aft deck also has an overhead light. There are 4 duplex outlets for accessories. The floor is carpeted. The windows are tinted safety glass. The height is 6'4 1/2". Standard equipment includes the bar with ice-maker, tape player with a stereo sound system piped throughout the boat; a complete control station with a helmsman's seat. The windshield is operated.

In the main salon, the cabinet housing the tape player for the stereo sound system contains an air condition outlet.

The bar in the salon has a sink with running water, accessible by a side door; an ice-maker and a storage compartment for bottles.

View of the spacious aft deck showing the extended hardtop and the helm seat and optional chair and table. A fine place for relaxing and entertaining.

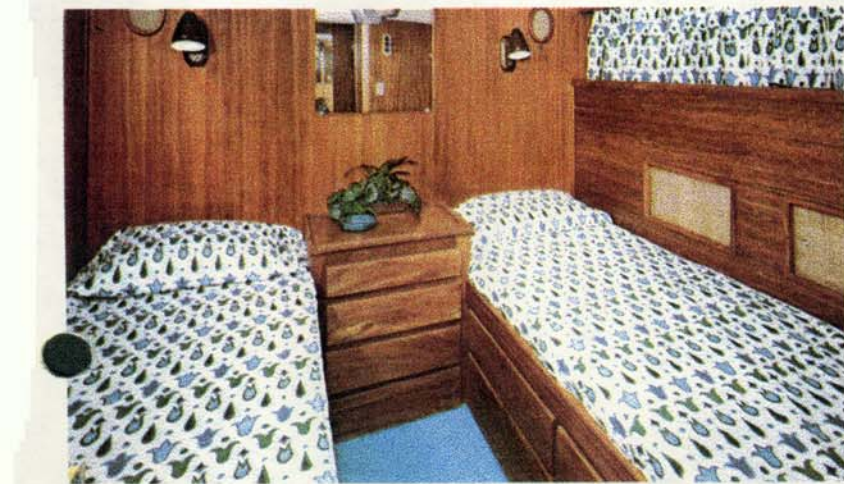




The galley is equipped with a 220-volt 4-burner electric stove with oven. Hood over stove has an exhaust blower and light. There is a dishwasher and a disposal unit; stainless steel double sink with hot and cold water pressure system. The 19 cu. ft. refrigerator has a freezer. High pressure laminate counter top. There is ample storage space in the counter drawers and storage cabinets. The screened sliding windows are draperied. 110-volt duplex outlets; 110-volt and 32-volt light fixtures. Vinyl floor covering.



(Above) opposite the galley is a dinette that seats 4. It can be converted to a bed to sleep 2. The table has a high pressure laminate top. There are drawers beneath the seats, as well as storage area in the outward bulkhead. The sliding screened windows are draperied.



(At left) The guest stateroom has fore-and-aft twin beds with polyfoam mattresses; a built-in chest of drawers; hanging locker and draperied port lights. There is also storage area in the outward bulkhead. Hanging locker has automatic light. A full length mirror. Decorator light and bed lights.

The master stateroom has twin beds with drawers underneath and 7" polyfoam mattresses. A large 9-drawer, built-in dresser and mirror. There is storage in both port and starboard bulkheads. Decorator lights and duplex 110-volt outlets for accessories. Screened port lights are draperied. There is also a screened overhead escape hatch. At right is a view of the master stateroom showing the extremely large walk-in locker with louvered folding doors that automatically turns on a light in the locker when opened, and turns off when closed.





Optional flying bridge is a complete control station with dual controls. It has comfortable seats for companions to the skipper and has a helmsman's chair.



Control station in salon has all necessary instruments and switches, aircraft type chart lights, Constellation compass with lights, dual lever controls with hydraulic steering and adjustable helmsman's seat. The windshield and side windows afford all-around viewing. There are 3 windshield wipers and 3 windshield washers.

The bow stateroom has upper and lower bunks, and sleeps fore-and-aft. It has a built-in chest of drawers; a large hanging locker. And the spacious rope locker provides additional storage

space. Vinyl tile floor covering; draperies on the two screened port lights, and an overhead screened hatch. 110-volt duplex outlet; 32-volt and 110-volt lights.

The bow head has an electric toilet; a vitreous china lavatory; a medicine cabinet with mirror; and shower. There is ample storage space. Vinyl tile floor covering. Draperies on the screened port light; an exhaust blower; 110-volt outlets.



Private heads for the three staterooms

The guest stateroom head is spacious and has an electric toilet; vitreous china lavatory; exhaust blower; 110-volt duplex outlet; 110-volt and 32-volt lights. High pressure laminate wall covering; vinyl tile floor covering; medicine cabinet with mirror; linen locker; curtains. Adjoining shower has built-in seat.

The master stateroom head has private entrance. It has an electric toilet; vitreous china lavatory; 110-volt duplex outlet; 32-volt and 110-volt lights. A medicine cabinet with mirror; and storage space in the vanity and in the bulkhead back of it. The screened port light is also draperied; vinyl tile floor covering. The walls are high pressure laminate covered. There is an exhaust blower. Adjoining shower has a built-in seat.



