





The Art of What's Possible

What do you want most from your next convertible?

Exhilarating speed?

A 4'2" draft?

A soft ride in a head sea?

Bulletproof construction?

World-class quality and engineering?

How about all the above?

INTRODUCING THE HATTERAS 54 CONVERTIBLE

She's equally adept at fishing the Canyon in towering seas or cruising the islands in shoulder-deep water. Designed for exceptional versatility and intuitive control under any condition.

She does so many things well in fact, that the Hatteras 54 is the new mid-size convertible benchmark.





REDEFINING THE SPORTFISHING CONVERTIBLE

Her flowing lines hint at Hatteras' redefinition of the luxury performance convertible. You can tell at a glance that there's something different about this Hatteras. The rake and curvature of the sheer. The high chines and fine entry forward. The refined deckhouse styling absent hard corners and edges and the low-drag flybridge.

But the 54's beautiful new looks also herald a hull design that is truly revolutionary – designed specifically to deliver a smooth ride while operating at high speeds. The convexity in the hull shape helps make this hull immensely strong. The slight outward curvature (viewed from keel to chine) reduces impact accelerations and contributes to an incredibly smooth head-sea ride.

Traditional Hatteras double chines are incorporated into the hull design to provide the Hatteras dry ride. A slight twist in the hull bottom – better defined as a variation of deadrise with length – provides flatter sections in the aftermost portion of the hull. These sections reduce resistance, improve handling at low speeds and increase transverse stability while planing.

While there's nothing at all meager about the Hatteras 54, there is one thing that's decidedly minimalist – her draft. Draft is minimized by the use of propeller pockets. These radiused prop pockets are carefully shaped to improve waterflow

to the propellers, reducing vibration levels (while also reducing prop tip clearances), reducing shaft angles and improving propulsive efficiency. Amazingly, you get a solid boat that draws only 4' 2" of water. Imagine the new angling and cruising possibilities that will open up for you.

Hatteras mates powerful diesels to deep reduction gears that turn huge seven-bladed propellers in shallow tunnels. The sheer volume of water moved by these propellers, in a very real sense, gives the boat better "traction" in a seaway. And the engines' slow-speed responsiveness while dockside or working a fish has to be experienced to be believed.

Knowledge gained from fighting and winning hundreds of tournaments these 40-plus years has produced a comprehensively equipped cockpit and spacious bridge designed to delight the most exacting crew. From the cockpit deck height above the waterline to the sightlines from the bridge helm station, every detail has been painstakingly worked into Hatteras' grand plan.

Experience the pure joy of owning the very best in its class – the Hatteras 54. From her design, engineering, comfort and open-ocean performance, to Hatteras' responsive after-sales service network and traditionally strong resale values, it doesn't get any better than this.

WE'VE TAKEN BOATBUILDING TO A HIGHER LEVEL

The look may be all new, but below the surface, she's all Hatteras.

Besides the shape of the hull and the propulsion drivetrain, the construction materials and methods used to build the Hatteras 54 are key to its success as an offshore tournament sportfisherman. The best hull shape in the world is of little use if the bottom structure can't take the abuse of continuous impact with tons of irregularly shaped saltwater.

The bottom is solid fiberglass to provide excellent impact resistance while eliminating the potential for core separation in this crucial area. A network of interlocking vacuum-bagged composite bulkheads and foam-cored fiberglass stringers support the bottom and serve as a foundation for the machinery, decks and superstructure.

The hull sides, decks and superstructure are cored with high-density Divinycell structural foam, creating a stiff, durable and lightweight structure. From the bow pulpit to the cockpit liner, the Hatteras 54's deck-superstructure is built of a single fiberglass part, eliminating secondary bonds and joints that could work loose over time. The cockpit's washboards are also made of a single fiberglass part, in effect creating a toe space all around the cockpit for added passenger and angler safety.

Hatteras has an extensive in-house manufacturing capability, ensuring that the highest possible level of quality control can be maintained during the construction process. This includes the yacht's custom-made water and holding tanks and the fiberglass fuel tanks (U.L. approved – unique to Hatteras) that are contoured to fit the hull and stringers, maximizing capacity and centering weight as low in the hull as possible to increase stability. Besides lasting indefinitely – essentially for the life of the yacht – these tanks actually contribute to the hull's structural integrity and impact resistance.





BUILT FOR DEDICATED ANGLERS

The 54 is designed for serious sportfishing. The cockpit boasts 149 square feet of open space where every element and dimension has a purpose. Fishing amenities include a bait and tackle center with sink, cutting board and tackle drawers; a double-wide bait freezer; storage console; four rod holders; a removable, full sized (80-inch) in-deck fish box with macerator and an amply proportioned transom door.

This cockpit also features awesome storage. Note the cleverly designed chill box under the steps. An insulated storage bin is located below the flybridge ladder. In addition, storage lockers with hinged doors are located below the port and starboard cockpit coamings. They conceal the shore power and water hook-ups to prevent injury in rough seas as well as providing a clean look. Other standard features include full-length toe kicks with foot pedal access to the cabinets and seawater and freshwater washdowns.

Sidedecks lead forward, with excellent nonskid providing a sure grip underfoot. All topside hardware is chrome-on-brass or polished 316L stainless steel. Ground tackle includes a fiberglass anchor pulpit with stainless steel chute and a Fortress anchor. Accessible from the bow deck is an anchor locker, which accepts the standard anchor should you elect to omit the pulpit. Cleats and chocks are tapped into aluminum backing plates encapsulated in fiberglass. Long-lasting anodized aluminum safety railings provide security topside, and powder-coated aluminum side rails offer a secure handhold.

Access to the spacious (150 sq. feet) flybridge is gained from a ladder on the outboard port side of the cockpit. This one-piece molded bridge will delight the seasoned captain for its ergonomic layout and sheer space. The helm station with its pod console takes center stage. The ergonomically positioned steering wheel (with power steering) and single-lever electronic engine controls, fitted with mechanical backups and trolling valve switches, are comfortably operated seated or standing. There is plenty of room for a comprehensive suite of electronics on the angled flats.

Guest seating is provided by two benches with removable cushions. Additional storage space is located underneath both seats. An insulated drink box is conveniently located forward to port.

Whether it's open or fitted with a hardtop, the flybridge offers a rich mix of fresh air, a breathtaking view and quiet surroundings to enjoy with family and friends.



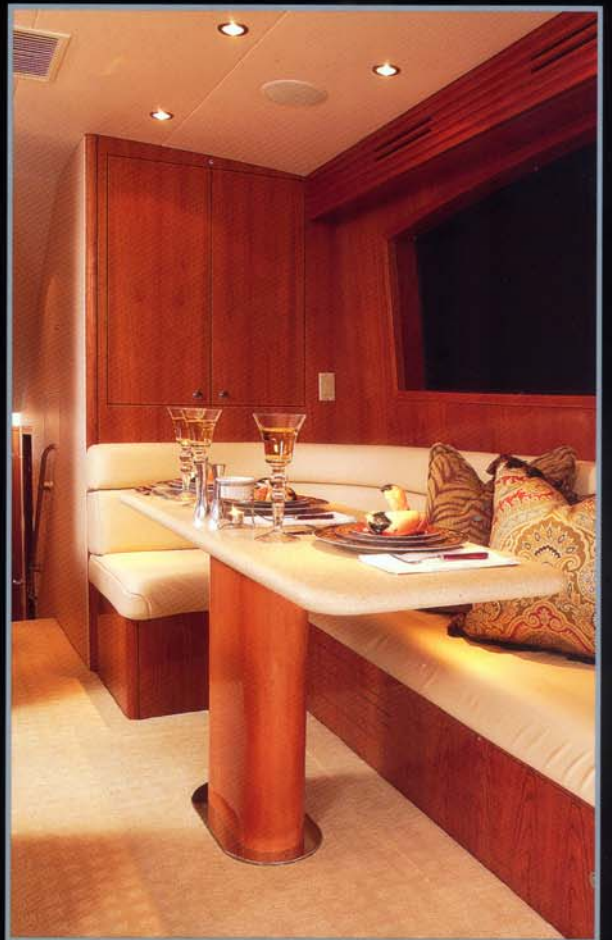














THE SALON AND GALLEY

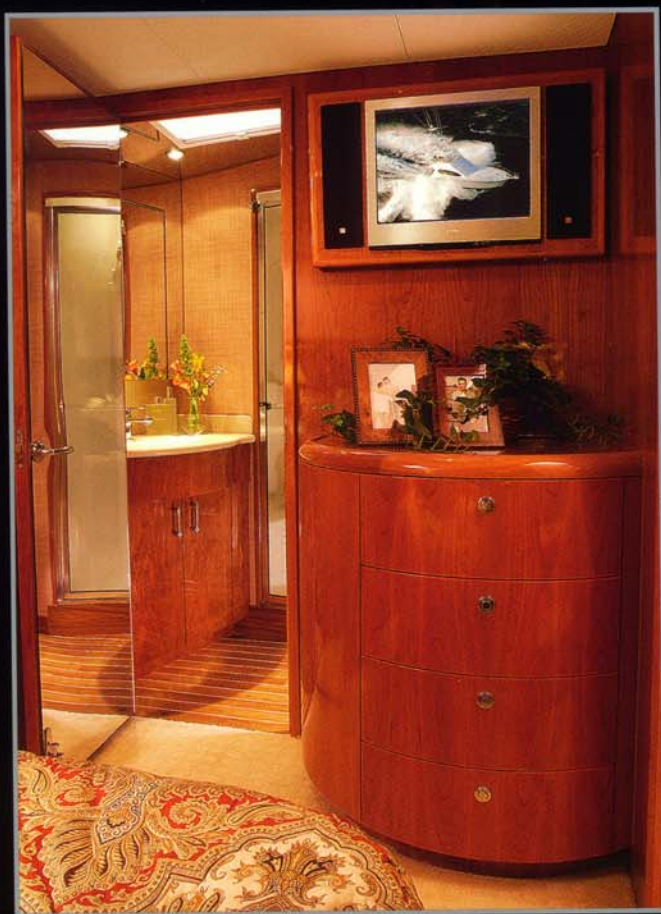
While the cockpit holds the promise of adventure and excitement, the 54's luxurious interior offers elegant comfort and relaxation. Her 195-square-foot salon features genuine wood interiors, a custom L-shaped sofa and entertainment center. Attention to detail is evident everywhere. Air conditioning is routed through slotted wood cornices – both port and starboard – extending the length of the salon and galley. One-inch wood blinds complement this rich wood interior.

Designed with your lifestyle in mind, the complete entertainment system includes a television and AM/FM "surround sound" stereo receiver with DVD/CD player. Relax, dim the adjustable lights and enjoy a movie or music at the end of the day.

The fully equipped galley offers genuine wood cabinets, four-burner cooktop, garbage disposal, icemaker and Sub-Zero freezer and refrigerator drawer units. The microwave/convection oven is cleverly concealed by the cabinet door – continuing the expanse of rich wood from salon to galley without interruption. This handsome galley is also practical – the Amitco vinyl strip flooring provides the appeal of real teak but is almost effortless to maintain. Galley storage is awesome with six (6) exceptionally deep drawers. The chart flat area provides room for two of the deep drawers and are cleverly designed into the aft galley backsplash. Convenient, eye-level bulkhead access to this area offers even more storage opportunities within easy reach of the galley and dinette. Opposite and close at hand is an L-shaped dinette with more storage room below the seat.

THE MASTER STATEROOM

The elegant master stateroom features a queen berth with cedar-lined storage underneath, air conditioning disbursement through fluted wood valances for uniform comfort and a concealed pocket access door for privacy. Bowed front wood nightstands and dresser enhance the rich architectural look while providing additional storage. The entertainment center includes an LCD screen TV and AM/FM stereo receiver and CD/DVD player. The private master head includes a stall shower with seat, solid surface countertops and easy-care Amtico vinyl strip flooring. Once again, ample storage is provided by a bowed front wood cabinet, separate linen storage and a mirrored cabinet.





THE GUEST STATEROOMS

The bow stateroom also contains a queen berth with cedar-lined storage underneath, full-length mirror, cedar-lined hanging locker and port and starboard nightstands. Port and starboard overhead lockers – a Hatteras exclusive – provide additional storage. The head – with private access from the bow stateroom – includes a stall shower with seat, integral sink and ample storage.

Note the creatively designed side-by-side berths in the guest stateroom. Additional features here include a double cedar-lined hanging locker, bowed front nightstand with drawers, and full-length mirror. Like the master suite, the guest stateroom also features a full-width bulkhead mirror. The head – shared with the bow stateroom – is conveniently located forward with private access.











110 North Glenburnie Road, New Bern, NC 28560 Phone: 252.633.3101 Fax: 252.634.4813
www.hatterasyachts.com

October 2002