



**AMF**  
**Hatteras**

**55 Convertible**



THE HATTERAS 55 CONVERTIBLE

# THE GUTS TO GET YOU OUT; TO SEE YOU THROUGH; AND

Come aboard the Hatteras® 55 and see how thoroughly we've anticipated the needs of the offshore hunter.

The 55 presents you with outstanding performance and spacious, comfortable accommodations. Its double life springs from its double chined hull. This design provides a broad beam of 17'6" for improved trolling speed stability and more interior space. But it still provides reduced wetted surface for minimal drag on plane.

The extra beam also makes possible a flying bridge of huge proportions. Seating accommodates the helmsman, plus six more on the comfortable built-in lounges. And all are protected from wind and spray by

the high, tinted safety glass windshield, complete with wipers and washers.

The 55 Convertible's business end provides total readiness for big game fishing action. Spacious, all-fiber-glass cockpit. Non-skid footing even when floating that trophy-taker through the transom door.

In the 55, you can go directly from cockpit to engine room—thanks to a direct access door in the cockpit. And, to help keep the engine room free from spray and hullside wash, engine air is drawn from intakes located under the cockpit's coaming.

There's much more to the 55. And all of it adds up to a great tournament machine.

*"Above decks, she's all business—a marlin's mortal enemy, a boat built to stand among the tournament's finest." Boating Magazine*

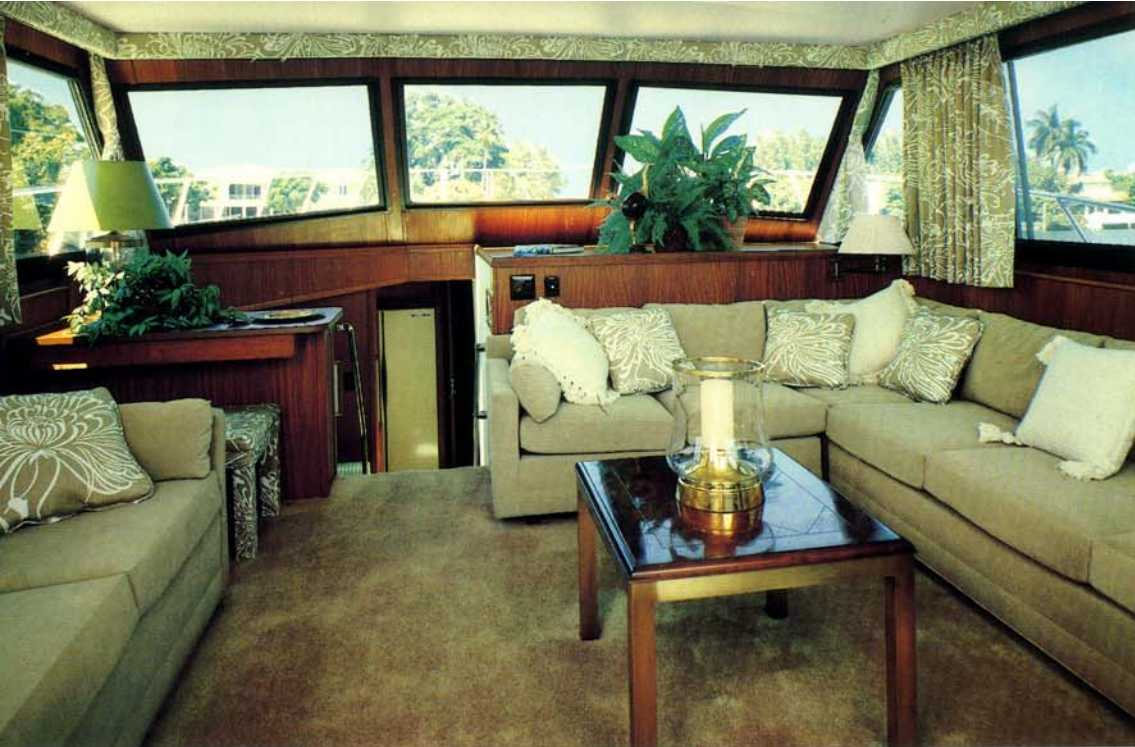




# THE STAYING POWER CLASS, CLASS, CLASS.







Salon of generous proportions seems to say, "Welcome to our home" instead of just "Welcome aboard." Fabrics and furnishings? Virtually unlimited.

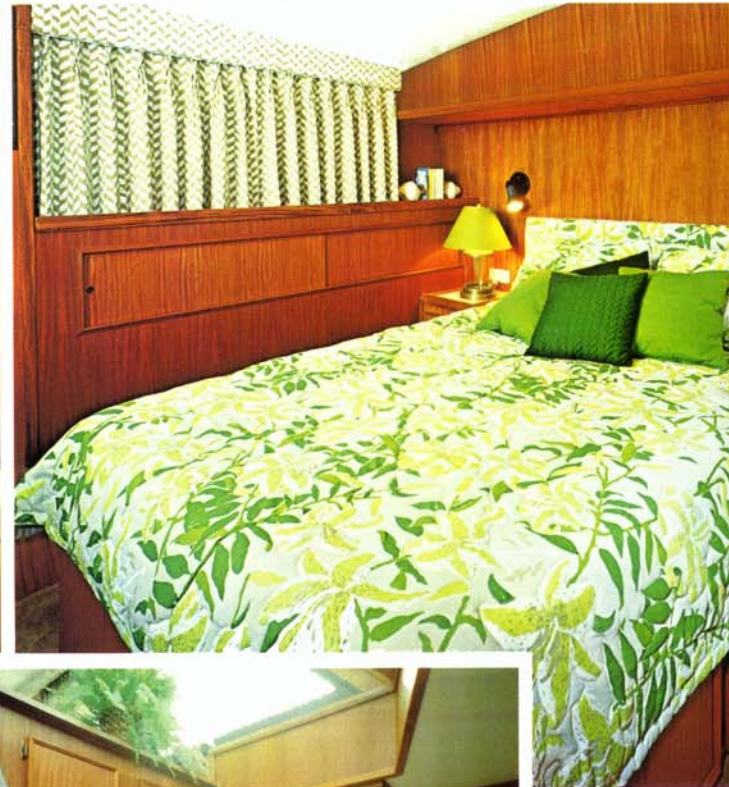
Bow Stateroom features built-in dresser, plenty of storage and ventilating hatch to foredeck.

Master Stateroom's head includes full shower stall, large mirrored medicine chest.

Master Stateroom features twin berths or optional queen bed, either with excellent walk space.

Spacious galley with full complement of appliances including 4-burner stove.

Dinette seats 4 comfortably.





# TOP PERFORMANCE, TRADITIONAL HATTERAS COMFORT.

In over two decades of building great sea boats, Hatteras has never been confused about what satisfies the game-fisherman—performance and comfort.

As you look through the interior, you'll find an array of Hatteras innovations that provide new levels of comfort and enjoyment.

Two floor plans are available to suit your needs.

The standard arrangement has two staterooms each with private head. Plus a lower galley.

The optional plan moves the galley to the deckhouse and allows three staterooms and heads.

Whichever plan you choose, you'll find a master stateroom so large that you can have a walk-around queen-sized bed if you prefer.

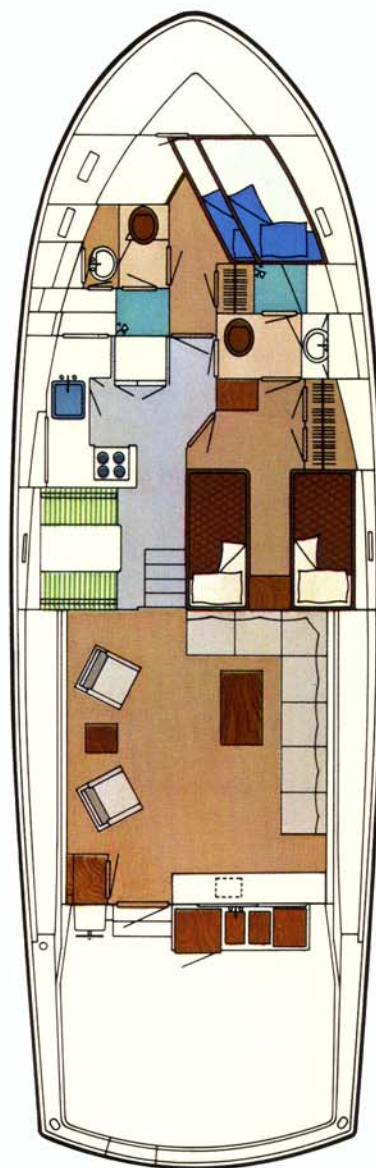
There's even room for an optional washer/dryer convenient to all staterooms.

You'll also find advanced features like an engine exhaust muffling system, specially built by Hatteras to provide greatly reduced noise level. An air conditioning/heating system so thoroughly engineered that it provides comfort with a hush you wouldn't expect to find on any yacht.

Of course, throughout the 55 you'll see the traditional beauty and craftsmanship that is our hallmark.

Natural wood paneling hand fitted and hand finished. Trim and joiner work carefully shaped and hand fitted from solid teak stock. Rich yet practical fabrics selected from a collection we've assembled to suit varied tastes and lifestyles.

Indeed, everywhere you look you see the qualities that say the Hatteras 55 Convertible is truly the class of the field.



The standard two stateroom plan with lower galley. Plus a salon that's fit for a motor yacht.



# SPECIAL FLOOR PLAN: THREE STATEROOMS BELOW, ONE GALLEY SUNNY SIDE UP.

Put yourself into the floor plan shown here and you'll see how Hatteras has put a great deal of living space into the arrangement of the 55. For live-aboards or weekenders.

Special attention has been paid to providing wide berths and adequate dressing space in all staterooms, well lighted and ventilated private heads with showers. And enough lockers and drawers so you won't have to put half your clothes in remote storage.

The deckhouse area is laid out with special consideration to traffic patterns through the boat. The galley, dinette and salon seating area are placed so they are out of the way of traffic flow and thus provide several semi-private areas.

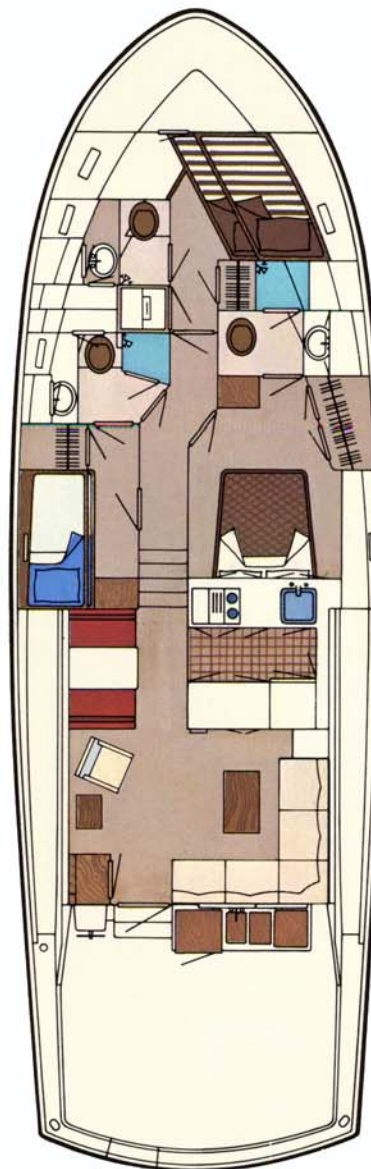
Floor plan efficiency is only one of the many subtle yet important ingredients factored into the design of our 55 Convertible.



Stand-up engine room. Direct engine room access from cockpit.

The sum of these parts is uniquely Hatteras. A sportsfishing yacht that is a joy to own. An investment that returns large amounts of pleasure and capital.

Your Hatteras dealer can arrange to show the 55 Convertible and point out all its innovative features. We believe you'll quickly understand why more people prefer Hatteras convertibles than any other brand in the world.



The alternate three stateroom plan has three heads and a topside galley. Shown here, off the bow companionway, is an optional washer/dryer.



Deckhouse galley serves up generous counter and storage space. Easy conversation between the chef and guests.



Galley is a modern cook's dream. Side-by-side refrigerator/freezer is home sized. Range with built-in griddle and two burners draws cooking odors down and outside. Space-saving oven serves double duty as a microwave and a convection air unit.

Guest stateroom's head with roomy shower stall.

Optional third stateroom. Beautiful proof guests don't have to be contortionists.







**AMF**

## **Hatteras Yachts**

High Point, North Carolina 27261 U.S.A.

55CV 2.5 1183  
Printed in U.S.A.

AMF Hatteras Yachts reserves the right to make styling, design, equipment and construction changes without notice. Also, prices are subject to change without notice. Some items shown may be optional. Hatteras is a registered trademark of AMF Incorporated. © 1981 AMF Incorporated