

Hatteras

60 ED MOTOR YACHT
67 ED COCKPIT MOTOR YACHT



Whatever Your Yachting Lifestyle, You'll Quickly Agree That This Is The Life!

The spacious four-stateroom, three-head below deck arrangement of the new 60/67 Extended Deckhouse Series of Hatteras Motor Yachts is totally accommodating — in more ways than one.

The hull is, of course, the renowned Hatteras modified-vee. The lines are crisp and sculptured and stylishly incorporate both walk-around side decks and a covered aft-deck for easy line-handling and docking convenience.

On the 67CY, the cockpit is full-size and functional, with a convenient transom door, coaming gate, and freshwater washdown. (It's also ideal for al fresco entertaining!)

From the practicality of a full-beam engine room, to the contemporary casual elegance enhanced by the pearlized ash wood interior, this is the Series that has your name on it. Right next to the name known the world over for quality at sea, Hatteras.

The light and bright open Galley encourages sociability as well as good cooking. Softened molded counter tops and European-styled appliances have been selected for function as well as appearance, and the floor here, as in the Pilothouse, is of diagonal light oak planking.



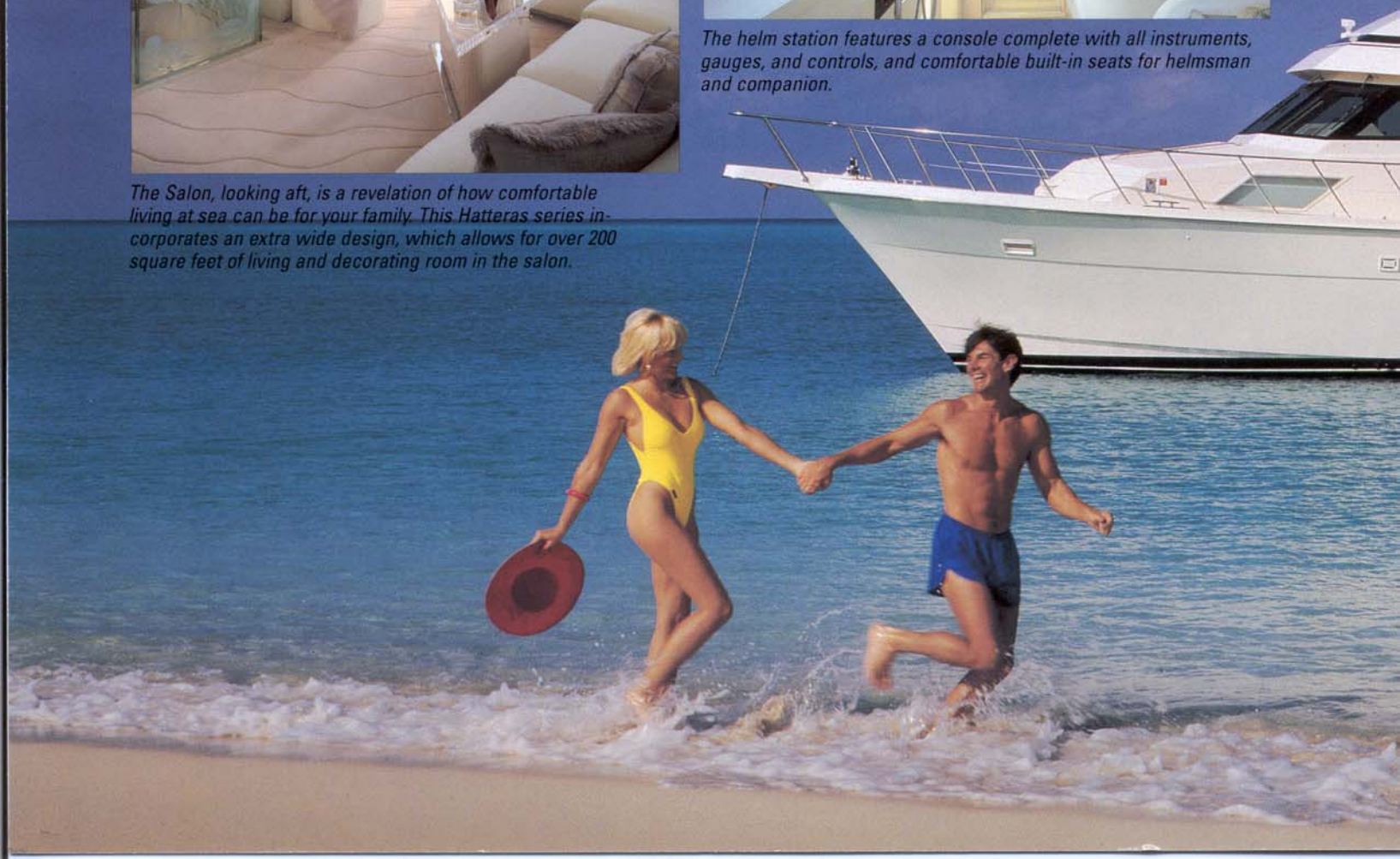
The Master S... with a few careful plann... and a walk-in tradition.



The Salon, looking aft, is a revelation of how comfortable living at sea can be for your family. This Hatteras series incorporates an extra wide design, which allows for over 200 square feet of living and decorating room in the salon.



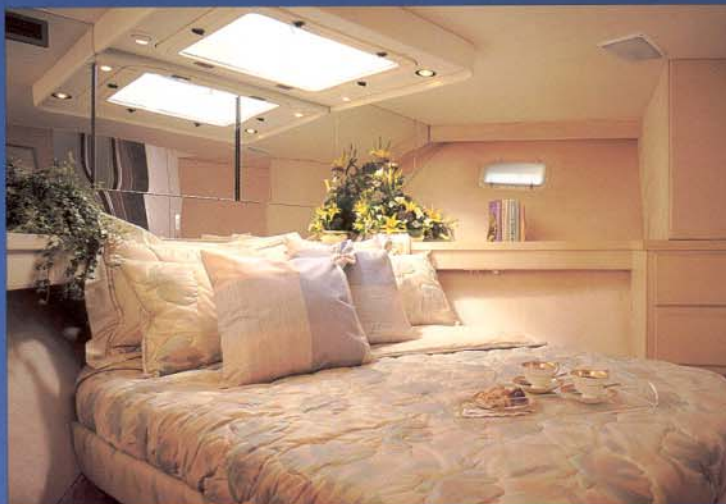
The helm station features a console complete with all instruments, gauges, and controls, and comfortable built-in seats for helmsman and companion.



is everything you'd expect from a Hatteras yacht of this magnitude. The spaciousness is enhanced by thoughtful surprises thrown in. The abundance of storage, including his and her dressers, is created with woodworking craftsmanship in the Hatteras



The Forward Queen Stateroom is proof that Hatteras designers don't leave anything (or anyone) out. It's planned for space, privacy, and storage — which add up to cruising luxury. There's also private access to the forward head, which can be shared with the Forward Guest Stateroom or used as a day head. The V.I.P. Stateroom is amidships . . . and the fourth stateroom can be customized into an office or den.



Even the Master Head has its touches of architectural elegance, providing the space and convenience you require in your quarters at sea.

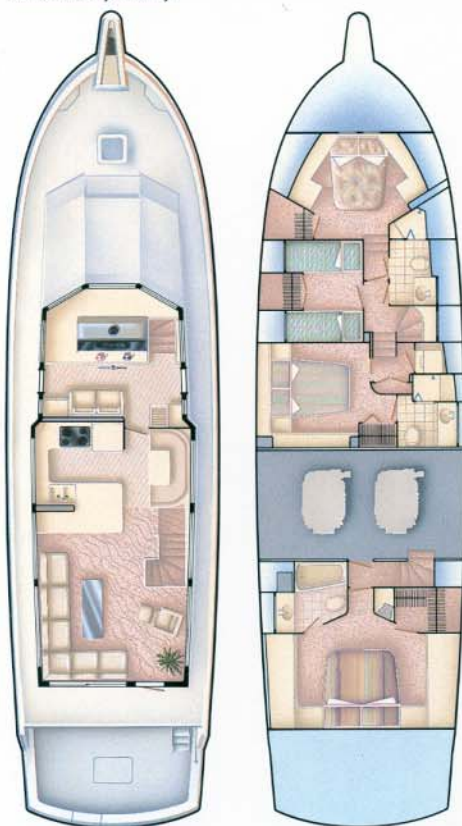
Here you'll find a full-size whirlpool bath and shower, and molded vanity tops that add luxury to the touch as well as the appearance.





Powerful arguments in favor of this Series include D.D. 8V-92TA engines rated at 720 SHP for the 60ED, or optional D.D. 12V-71TA engines rated at 870 SHP for both models. The 67CYED also offers a performance package of D.D. 12V-92TA engines rated at 1040 SHP each.

The beautifully designed upper Galley and wide Salon combine a true "great room" effect that's perfect for today's casual life-style. Below decks, four staterooms that maximize privacy.



Hatteras

Hatteras Yachts
2100 Kivett Drive
P.O. Box 2690
High Point, North Carolina 27261 U.S.A.
Telephone: (919) 889-6621

Hatteras Yachts reserves the right to make styling, design, equipment and construction changes without notice. Some items shown may be optional or customer supplied. Hatteras is a registered trademark of Genmar® Industries, Inc.

© 1991 Hatteras Yachts, Division Genmar® Industries, Inc.
60EDMY/67EDCPMY 15M 891 Printed in the U.S.A.

