

Hatteras

60 MOTOR YACHT AND 67 COCKPIT MOTOR YACHT



Luxurious living and a lively lifestyle — Hatteras style!

The new breed of contemporary Hatteras yachts continues to blossom. Now add to our fleet of sleek motor yachts an interesting choice of two elegant and graceful models, the Hatteras 60 Motor Yacht and the Hatteras 67 Cockpit Motor Yacht. Each has been created to respond to the particular needs of varied yachting lifestyles.

Perhaps the most attractive design aspect of either of these is the way in which form serves function. Certainly the Hatteras 60 Motor Yacht and the Hatteras 67 Cockpit Motor Yacht offer lean profiles. A crisp, sculptured shape sweeps from the bow pulpit aft to the contoured, defined hardtop and transom lines, creating a balance between pleasing contemporary lines and uncompromised owner comfort.

For many, this may be the one supreme expression of style. But for Hatteras it's only one element of our ongoing commitment to build a superb yacht.

There are also the design aspects that cannot be seen, below decks and below the waterline. The hull itself created for these boats is the proven modified-vee designed by the noted naval architect Jack Hargrave. This stable, efficient platform accommodates twin GM 8V-92TA diesels on board the 60, and twin GM 12V-71TA diesels on board the 67. They are rated at 720 and 770 shaft horsepower, respectively.

The living quarters on each model are generous in appointments and space. The expansive salon measures 23' by 12', and includes a full helm station forward that enhances a feeling of openness. Discreetly concealed in fine cabinetry is a complete entertainment center with color television, VCR, AM/FM stereo receiver and cassette deck. This fully-equipped center is arranged to separate the lounging area from the helm station without enclosing either. The station itself includes comfortable built-in helmsman and companion seats.

From forward in the salon, there is easy passage to the flying bridge, or to the aft deck through the rear door.

Protected by hardtop, wingdoors and tinted side windows, there is ample opportunity to decorate the aft deck for small group-entertaining or as your private sunroom getaway.

There is a standard, handcrafted wood serving cabinet which opens to a large wet bar with icemaker, glass and bottle storage, plus a bulk storage area for reserve supplies.

Accessorized with your selection of seating styles and handsome, durable carpeting, the aft deck just might become your favorite corner of the world.

On the Cockpit Yacht, steps lead from the aft deck to an all-fiberglass cockpit. This 8-foot-long cockpit, the largest offered to date on a Hatteras cruising model, can facilitate dock access, swimming, fishing, even a small inflatable launch. We've also included a transom gate of large, sportfishing proportions to facilitate your active on-the-water lifestyle.

On either model, the fully-instrumented flying bridge features twin helm seats and a tip-out locker for desired electronics alongside the control station. Aft, the expansive bridge deck offers an open area for sun-and-fun activities. A U-shaped lounge area offers group seating and abundant storage space underneath.

Of course, at Hatteras we've always given special attention to detail in our lower deck layouts and designs. The three comfortable staterooms with their spectacular accommodations, the convenient dinette and fully-equipped galley, and storage room galore, all demonstrate there is room below for a lot more than even our pride.

For example, the sumptuous master stateroom offers very special appointments that you might expect in a hundred-foot yacht. Certainly, there is ample room for a tapered queen berth (or optional twins), with full bed linens plus two handcrafted dressers, drawered nightstands and walk-in cedar-lined wardrobe. But that's not half of the Hatteras details. We've also included full draperies with upholstered valance boards, comfortable built-in reading lounge, AM/FM stereo receiver and cassette deck, color television and a variety of conveniences to reward your day's end. And the private master head is wonderfully well-equipped, featuring a full-size whirlpool bath with shower and luxurious molded marble countertop and basin.

The bow stateroom also offers everything you'd expect and more. Here are upper and lower full-length berths to starboard, and to port a full-hanging locker behind a full-length mirror. Additional drawer space has been provided under each berth and in the built-in dresser. The bow stateroom head, with stall shower, has been placed for convenient day use as well.

The midship guest stateroom is equipped with twin berths separated by a nightstand, and includes its own full-hanging locker with full-length mirror. The guest head, also with a stall shower, is located immediately across the companionway, adjacent to the laundry center.

The galley is equipped with a side-by-side refrigerator/freezer with icemaker, a four-burner cooktop with conventional oven, a microwave oven, a full-size dishwasher, a built-in food blender and garbage disposal. A few steps away, the dinette offers soft, upholstered seating for four.

And, of course, there is the long list of standard equipment that comes with every Hatteras.

For example, the Hatteras 60 Motor Yacht and the Hatteras 67 Cockpit Motor Yacht include: 20 kw fresh-water-cooled generator, a Hatteras systems monitor to keep vigilance over vital engine and marine gear functions, bilge water and automatic fire extinguisher system. Also, with your convenience in mind, we've included a quiet and efficient air conditioning/heating system, transformer-connected 120-volt and 240-volt (50 amp) shorelines, engine synchronizers, and an engine oil change system.

Other standard features include a bow pulpit, deck rails in teak and stainless steel, non-skid exterior deck surfaces, and radar arch. Inside, you'll find varnished wood finishing and handmade cabinetry throughout, as well as laminate counter tops and custom molded composite marble lavatory tops and basins. All these features and more have been handsomely wrapped in an expressive contemporary styling package from Hatteras.



*The Hatteras 60 Motor Yacht
A contemporary, eloquent statement.*



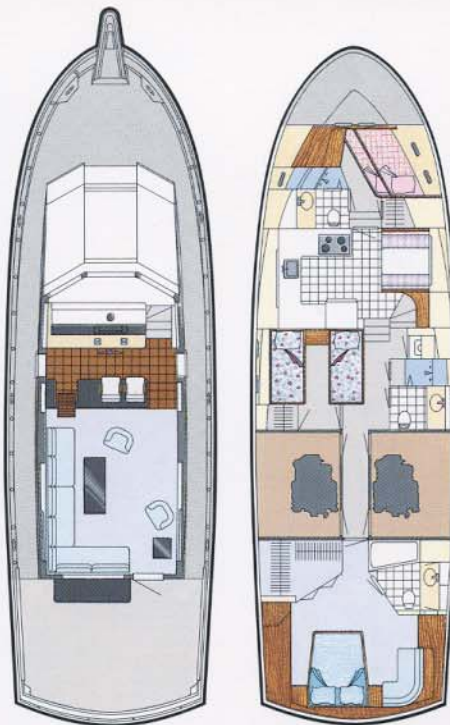


*The Hatteras 67 Cockpit Motor Yacht
Luxury for a lively lifestyle.*



The helm station features a console complete with all instruments, gauges and controls, and comfortable built-in seats for the helmsman and companion.

The aft deck is an ideal setting for afternoon conversation and relaxation. Convenient yet unobtrusive, the wet bar with icemaker has been placed to maintain a casual, conversational atmosphere.



The salon's floor plan works extraordinarily well. This space has been designed to facilitate friendly conversation for two to twelve, in deck shoes and jeans, or black ties and gowns.

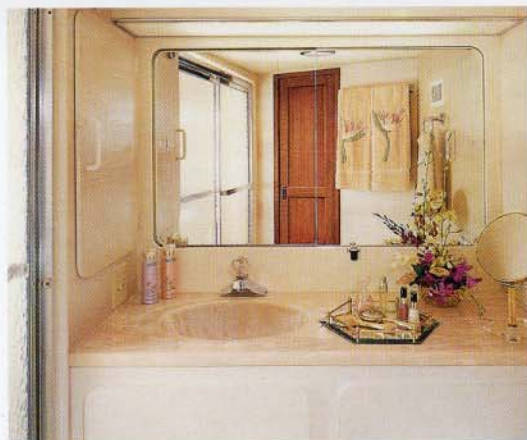


We've kept in mind that you may want to furnish and accessorize this area as if it were your living room at home.



Salon facing forward — The handcrafted cabinetry throughout these models, shown here in the complete entertainment center, is as always one of the hallmarks of a Hatteras-built motor yacht.

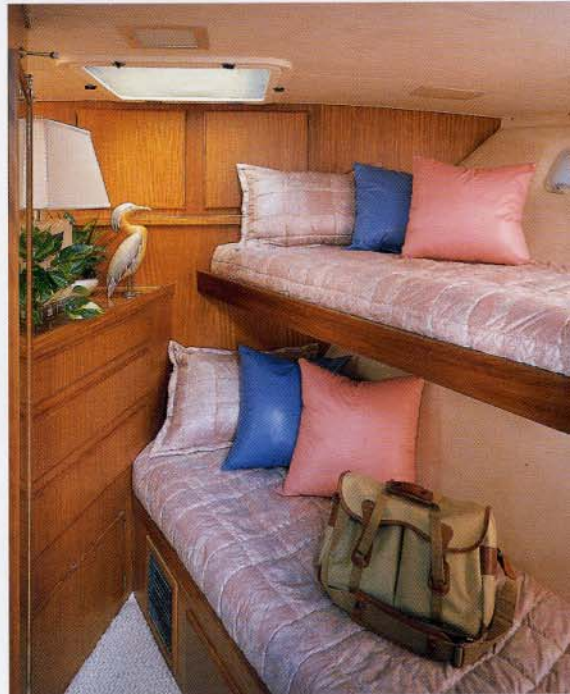
The master stateroom reflects everything that a Hatteras design delivers — an abundance of live-aboard space and storage, and the finest workmanship and material you'd expect from Hatteras. The comfortable built-in reading lounge suggests a suite-style setting to the room.



The master head, accessible only from the master stateroom, is equipped with a full-size whirlpool bath with shower. The vanity top here and in the other heads are custom-made in molded marble composite.



The head adjacent to the bow stateroom offers real privacy and convenience — and uncommon luxury as well.



The bow stateroom offers well-designed living quarters for crew or additional guests. Its own private head, with stall shower, is conveniently placed for daytime access from the galley, dinette, and salon deck.



An important part of live-aboard livability is centered around food preparation. In the galley, you'll find all the room you need for cuisine prep, and all the necessary conveniences. That includes a microwave and conventional oven, four-burner cooktop, and all the latest appliances.

The dinette is adjacent to the galley, just a few steps from the salon. Can you imagine a more ideal place for cozy, informal get-togethers?



The guest stateroom is designed to welcome your guests with at-home comfort. Large twin berths and convenient built-in nightstand, an ample hanging-locker with full-length dressing mirror, all create a quick "Welcome Aboard!" impression. The private guest head with its stall shower is just a step across the companionway.



Of course, with every feature, by any aspect, the true beauty of the Hatteras 60 Motor Yacht and the Hatteras 67 Cockpit Motor Yacht is the way each serves its owner. Both are truly livable, truly exceptional motor yachts.

Make an appointment with a Hatteras dealer to experience the excellence of a Hatteras-made yacht soon. Your pleasure awaits.

The guest head is strikingly elegant. Carefully planned lighting, an enclosed shower, and contemporary fashion laminates add those Hatteras touches.



The floor plan of the 67 Cockpit Motor Yacht gives a hint of the lively lifestyle ahead of you. Shouldn't this be yours to enjoy?

Hatteras Yachts Inc.
2100 Kivett Drive
P.O. Box 2690
High Point, North Carolina 27261 U.S.A.
Telephone: (919) 889-6621

Hatteras Yachts reserves the right to make styling, design, equipment and construction changes without notice. Some items shown may be optional.
Hatteras is a registered trademark of Genmar® Industries, Inc. © 1988 Hatteras Yachts, Division Genmar® Industries, Inc.

60MY 67CPMY 20 388
Printed in U.S.A.

