

# *Hatteras*

65 MOTOR YACHT  
70 COCKPIT MOTOR YACHT





**Two expressions of the Hatteras lifestyle.**





# Which one expresses yours?

The world over, many yacht owners define quality of life in terms of the Hatteras they own. For them, as perhaps for you, the very *concept* of quality has derived from years of enjoyment, one Hatteras after another.

And today, there is no more substantial response to your continuing search for excellence than the Hatteras 65 Motor Yacht and Hatteras 70 Cockpit Motor Yacht.

Each represents what many consider the very essence of Hatteras: updated traditional styling, to assure you they will remain classics into the next decade; contemporary world-class design, to make a timely statement of individuality; and the Hatteras steadfast unwillingness to compromise.

Each goes beyond the expected to satisfy your desire for live-aboard luxury... and includes alternative interior layouts that afford you the advantages of custom-appointed yachts.

The first thing you'll notice is that the exterior styling makes a statement of your desire for "the best there is." The lines of the foredeck sweep gracefully aft, well-balanced with the large window areas. The extended bridge deck rises as part of the one-piece sculptured superstructure and is accentuated by the hand-crafted aluminum radar arch.

Complete in its shape, reflecting the Hatteras approach to contemporary design, form follows function. And, from here, every other yacht follows Hatteras.

An 18'2" beam provides spaciousness throughout your domain, with a full-width deckhouse salon and four magnificent staterooms and heads.

And the closer you look, the more appealing it all gets. Here, at last, is proof that somebody has been listening to the needs — and the dreams — of those who have had the experience of owning and living with large yachts.

The emphasis is on luxury that speaks softly but clearly. Just about everywhere is one refinement after another, from the natural wood accents on the cabinetry, to the tones of the wall coverings and counter surfaces.



*The Hatteras 65 Motor Yacht may be specified to include an extended cockpit aft, which creates the Hatteras 70 Cockpit Motor Yacht, shown at left.*





**A** Salon alternate layout: demonstrates how well this yacht marries efficiency and luxury. To port, a formal dining area and built-in wet bar add an elegant dimension to the space. To starboard, the stairway to the master suite is neatly concealed behind this custom entertainment center.

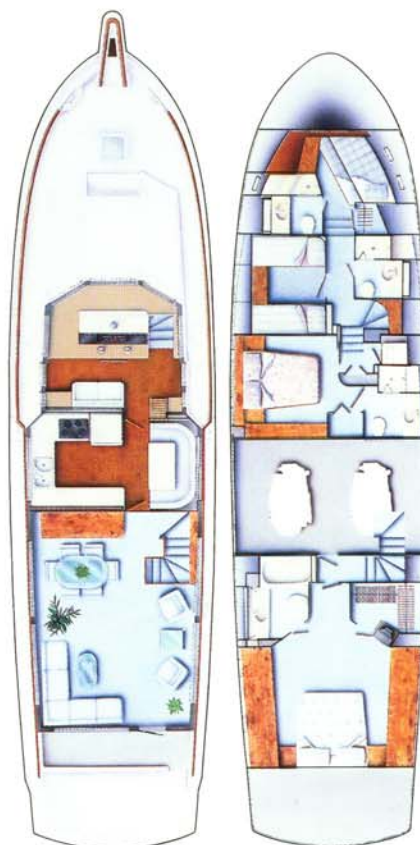
**B** Salon standard layout: looking forward, the salon opens expansively, providing a formal dining area for eight and to starboard a large combination wet bar and entertainment center. The center itself is well-stocked in the Hatteras manner, complete with color television, VCR, and a stereo AM/FM cassette sound system.

**C** The pilot house has been designed for comfort and control. Ample space for a full array of electronics has been provided, all centered around the wheel. Likewise, plenty of space for chart work and storage has been included in and around the riding lounge.

**D** Room abounds in the U-shaped galley, well-planned and well-appointed. Equipped with side-by-side refrigerator/freezer, four-burner cooktop, oven, dishwasher, garbage disposal, built-in microwave, and a wealth of counter and drawer space, this galley can accommodate the needs of a seasoned chef.

**E** To starboard off the galley, the dinette with seating for four serves as the ideal setting for casual conversation during meal preparation or a lazy Sunday brunch.

The optional alternate layout for the Hatteras 70 Cockpit Motor Yacht, shown at right. Note the staircase from the salon to the master stateroom aft, full beam engine room, and the V.I.P. guest stateroom amidship.







## A walk through your world

Hatteras never forgets what the real priorities of yachting are.

The main deck presents you with an enclosed pilot house which, with its command console, puts complete control at your fingertips. The surrounding cabinetry provides space for a comprehensive array of the newest electronics available, and there's a comfortable riding lounge with chart storage drawers and storage cabinet.

The full-width salon itself makes a statement that is unmistakable: you are in command of your own environment, and that environment is absolutely commanding. It represents over 240 square feet of living space for your family to enjoy and your friends to appreciate. (Which also makes it a pleasure to furnish to your taste.) Included, in the Hatteras manner, is a built-in entertainment center featuring color television, VCR and a stereo AM/FM cassette sound system to selectively fill your salon with your favorite music... and a wet bar with glass and bottle storage.

The salon's aft door leads to a protected aft deck, large enough to move about during handling of lines.

On the 70 CMY, it also provides access to the spacious cockpit, complete with a non-skid fiberglass deck, lazarette hatch, and transom gate. It's the ideal way to keep close to the water. For stern docking, for swimming, and for enjoying the sun for all it's worth, Hatteras does it right!

Of course, anyone hungry for luxury also gets just plain hungry, too. That's why Hatteras spares no efforts in delivering a galley and dinette to whet your appetite for the good things in life.

Nothing is an afterthought. The design has been computer-enhanced to assure you the utmost in work-area efficiency. The galley is spacious, well-planned and well-appointed. It's equipped with a side-by-side refrigerator/freezer with an icemaker, a four-burner cooktop, oven, dishwasher, garbage disposal and a built-in microwave.

To starboard, the U-shaped dinette creates a wonderfully



informal environment for conversation and sharing; and the comfortable upholstered seating includes storage areas beneath.

Now let's take a closer look at the flying bridge. It's standard, but far from typical. Here's a complete control station, with electronics locker, and sleek, aft-raking windshield. The helm and companion seats and U-shaped lounge seating make for comfort all around, and there's storage in the lounge seating as well. For enhanced enjoyment, a variety of entertainment consoles and cabinetry are available at the owner's request.





**F** This is the master stateroom looking aft, shown here in the alternate layout. Access from the salon stairway opens to a king-size berth, with built-in nightstands and dressers. There's also room for a built-in color television.

**G** The master head has its entrance from the master stateroom, and is equipped with a full-size whirlpool tub and shower, molded-marble basin and countertop for the vanity, a large sliding-mirror cabinet, even a large linen locker.

**J** Immediately across the companionway, the forward guest head to starboard includes a large stall shower, molded-marble countertop with sink, and ample storage space.

**K** The bow stateroom demonstrates Hatteras' attention to every detail. It features comfortable upper and lower berths with storage below; a cedar-lined hanging locker, a rope locker, ventilating portlights with screens, and a screened overhead hatch.

**L** The VIP guest stateroom, available in the alternate layout, is indeed designed for your most important guests. The full beam stateroom includes its own exceptional comforts such as a built-in color television, and provides access to its own private VIP guest head with stall shower. A mirrored inset accents the built-in dresser and cedar-lined hanging locker.

**M** Looking to port side, the VIP guest stateroom offers a comfortable large queen-size berth, flanked by matching bis-and-ber nightstands.

**H** In the standard arrangement the master suite features this large dressing area, richly appointed with matched draperies and valance boards. The lighted mirror vanity adds a distinctive feminine touch to the suite. Full-length mirrored sliding doors to the cedar-lined wardrobe serve to enlarge the space and are perfect for final preparations before an evening out.

**I** The forward guest stateroom is outfitted with large twin berths separated by a cedar-lined hanging locker with an automatic light. There's plenty more storage space here, as well, with storage above and below each berth. And its other amenities include stereo speakers with an individual volume control, full-length mirror, and a sliding window with screen.

**N** In the standard layout, the mid-ship guest stateroom comes appointed with twin berths with storage under each, a nightstand with drawers, and a cedar-lined hanging locker with storage overhead. Each stateroom also provides thoughtful amenities such as stereo speakers with a separate volume control and full-length mirrors.







I



J



K



## Below decks, a private life of your own, the way you'd create it yourself.

First, imagine everything you'd wish for in a four-stateroom motor yacht. Now look about you, and prepare to be amazed at how incredibly "right" Hatteras planners have made it.

The private master suite gives you the roominess you've always wanted, and need not wait for any longer. You'll relish the king-size berth, built-in nightstands, color TV, his-and-her dressers and wardrobe — plus a separate in-suite dressing area with lighted vanity, cedar-lined wardrobe with mirrored doors, and extra drawer space. (If you'd prefer, this area can be optionally outfitted as your private on-board office. Several different designs are available.) There's also an air-conditioned private master head with a full-size whirlpool tub and shower.



## The alternative floor plan: the suite life for V.I.P. guests.

If you so desire, you may select the alternative layout for either the Hatteras 65 Motor Yacht or 70 Cockpit Motor Yacht. You will have instantly created a master suite with private stairwell, a spacious well-appointed guest suite, and full-beam engine room of "big yacht" proportions.

Privacy is the key.

The master suite has its own private stairway from the salon, maintains the fully-appointed head, and adds a large, cedar-lined, walk-in closet.

The single guest stateroom amidship is really a V.I.P. *suite*, with room enough for a tapered queen-size berth with night-stands. Room enough for a large cedar-lined closet and full dresser. Room enough for its own private head with stall shower, in the suite itself.

When it comes to building large yachts, nobody does it like Hatteras, do they?

Wherever you experience the 65 MY or the 70 CMY, there's

one overriding principle of ours that becomes resoundingly clear. In the Hatteras tradition, quality is everything. You'll find it in the varnished-wood finishing and the cabinetry. In the famous Hatteras systems monitor, to keep vigilance over vital engine and marine gear functions. In the heavyweight Hatteras electrical and mechanical systems.

In such standard equipment as a freshwater-cooled 20kw generator; engine synchronizers; oil-changing system; transformer-connected 120V and

240V, 50 amp shorelines; and quiet, efficient reverse-cycle air conditioning and heating throughout. And the power of D.D.C. 12V-71TA diesel engines, rated at 770 SHP for the 65 MY and 870 SHP for the 70 CMY.

But ultimately, words are only words, and there's only one way to appreciate the Hatteras 65 Motor Yacht and 70 Cockpit Motor Yacht. Experience them for yourself. Your Hatteras dealer would love the opportunity to help you do so. Because his job is to help you do what every Hatteras owner around the world does every morning:

Experience the excellence.







## The standard floor plan: it's anything but standard.

The life at sea never offered so much luxury to see. Two forward guest staterooms, each with a head; a hallway laundry and linen center; and a bow stateroom and head... only Hatteras could call this floor plan "standard."

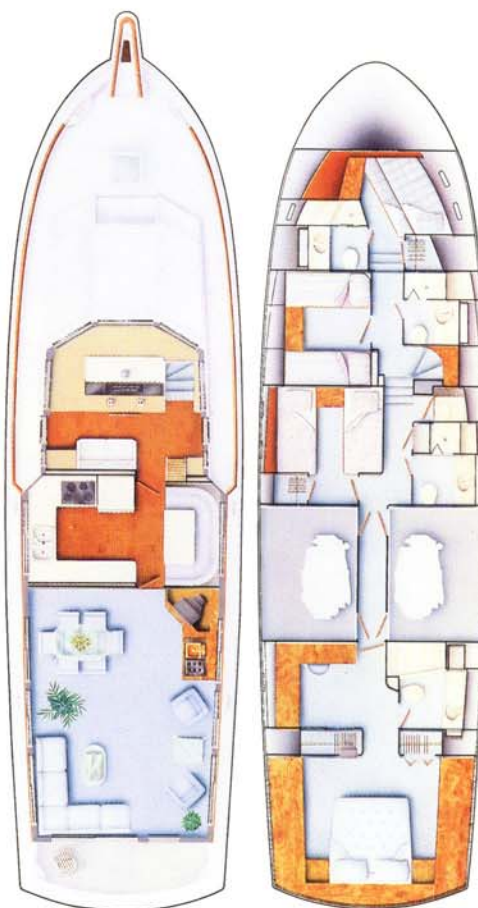
The guest staterooms amidship make your guests feel right at home in your home on the water.

The aft guest stateroom features twin berths with drawers under, plus a nightstand, cedar-lined hanging locker, overhead blanket locker, and full-length mirror. A few steps away is a private head with stall shower.

(The companionway has a linen storage area with a laundry center which includes a combination washer/dryer, of course.)

The forward guest stateroom offers twin berths, with ample storage that includes a cedar-lined hanging locker. The adjacent head has a shower as well, and serves as a convenient day head.

The bow stateroom, as you've come to learn by now, also features Hatteras thoughtfulness in every square inch. Upper and lower berths, dresser with drawers, full-length mirror, and cedar-lined hanging locker — and a private bow head with stall shower — make for beautifully utilized space.



*The standard layout of the Hatteras 65 Motor Yacht, shown at left, illustrates the large dressing area with vanity that is included with the master stateroom.*



Hatteras Yachts  
2100 Kivett Drive  
P.O. Box 2690  
High Point, North Carolina 27261 U.S.A.  
Telephone: (919) 889-6621

Hatteras Yachts reserves the right to make styling, design, equipment and construction changes without notice. Some items shown may be optional.  
Hatteras is a registered trademark of Genmar® Industries, Inc. ©1988 Hatteras Yachts, Division Genmar® Industries, Inc.

65MY/70CMY 15 1088  
Printed in U.S.A.

