

*There are times in the fields of human endeavor
when art and engineering blend in a harmony of
beauty and efficiency.*

*Such a blending is evident in the
Hatteras 65 Sail Yacht.*

*Her lines are from the board of Ted Hood, one of
America's master yacht designers, who has won
virtually every distinction the sailing world can
bestow: the SORC; the Newport-Bermuda; the
Mallory Trophy; the Marblehead-Halifax; the
Yachtsman of the Year Award.*

*Her engineering and construction are
by Hatteras, the world's largest builder
of quality yachts, whose name is synon-
ymous with luxurious vessels built to
withstand the unrelenting demands
of the sea – year after year.*

*In the 65 Sail Yacht, Hatteras and
Hood have combined their expertise
to produce a cruising sailboat
which incorporates the best of all
we both know about designing
and crafting a yacht of timeless
beauty, engineering sophis-
tication and manufacturing
excellence.*

*A yacht to carry you across
the oceans of the world.*

To the far horizon.

And beyond.

The Hatteras 65 Sail Yacht







The Hatteras Hood Connection

At Hatteras, we know how to build yachts right.

As the largest builder of quality yachts in America, we have a quarter-century of experience in creating luxurious motor yachts, tough long-range cruisers and dependable sportfishermen.

With that many years of experience, we have learned some things about designing, engineering and crafting vessels which meet the rigorous tests of ocean voyaging – and discriminating owners.

There are volumes in this single fact: Over ninety percent of our experienced owners say when they buy another yacht, it will be a Hatteras.

But size is not what sets Hatteras apart.

Our reputation among experienced yacht owners is based on quality – quality that is laid with the keel and permeates every system, every fitting, every detail that goes into a Hatteras.

As helmsman, tactician, sailmaker and designer, Ted Hood is the dean of America's sailing fraternity.

He is America's preeminent sailmaker, founder of one of the nation's most prestigious sail lofts, and the innovative designer of the Stoway sail-furling mainsail system.

He designed the America's Cup contenders Nefertiti and Independence. From that testing in the crucible of competition, he has learned to design cruising boats that sail well under a wide range of sea conditions.

Now Hatteras and Hood have joined forces to produce the Hatteras 65 Sail Yacht – a vessel of uncompromising quality which will perform – and endure.

Looking aft (right), the raised saloon of the Hatteras 65 Sail Yacht features – to starboard of the companionway – a functional navigator's station with seat, chart flat, chart storage and ample space for electronics. To port of the companionway, which leads aft to the owner's suite and guest staterooms, is space for a television set and library shelves. The view forward (below) shows the expansive L-shaped lounge, hi-lo cocktail table which converts to a dinette, cabinetry for a wet bar and icemaker, and step down to the galley and forward staterooms.



The Ultimate In Cruising Comfort

The Hatteras 65 Sail Yacht is an expertly crafted centerboard sloop with raised saloon, full-beam galley, five staterooms and four heads.

As you enter her interior, you are welcomed into a realm of understated elegance.

Lustrous natural woods, a teak-and-holly sole in the saloon and companionways, burled countertops, and choice fabrics on the saloon seating combine to create an ambience of restrained sophistication.

Large coach house windows, seven opening deck hatches, seven dorade vents and fourteen opening portlights – all screened – admit abundant light and air to contribute a note of bright cheerfulness.

The expansive main saloon has a large L-shaped lounge and hi-lo cocktail table which convert to dinette seating for a full complement of guests. To starboard is the functional navigator's station and room for additional seating. An AM/FM stereo receiver/cassette deck is standard with separate speakers in each stateroom. Cabinetry has been provided in the saloon for a wet bar and icemaker.

The interior's feeling of openness is enhanced by waist-level counters between the saloon and the full-beam galley which has holding plate refrigerator and freezer, gimbaled gas stove with oven and more than ample storage including a locker sized to accommodate a microwave oven. Space has also been provided for an optional clothes washer/dryer forward of the galley.

The full-beam galley of the 65 Sail Yacht includes, to port, excellent storage space beneath burled counter-tops, a gimbaled gas stove with oven, double stainless steel sink and hold-plate refrigerator. To starboard are a hold-plate freezer, a locker sized to accommodate a microwave oven and additional storage lockers.



The port bow stateroom features a single berth, generous storage and access to the forepeak head. The starboard stateroom forward offers similar amenities with over/under berths.



The carpeted owner's suite aft features a queen-size walk-around berth, two lighted, cedar-lined hanging lockers, dresser and lighted vanity/desk. Single berths are optionally available. The owner's private head aft of the stateroom has a large, fully-enclosed stall shower.

The guest stateroom to starboard of the center companionway has side-by-side single berths, hanging locker, nightstand and its own head with stall shower. The portside guest accommodations duplicate those amenities with over/under single berths. Both staterooms are carpeted.

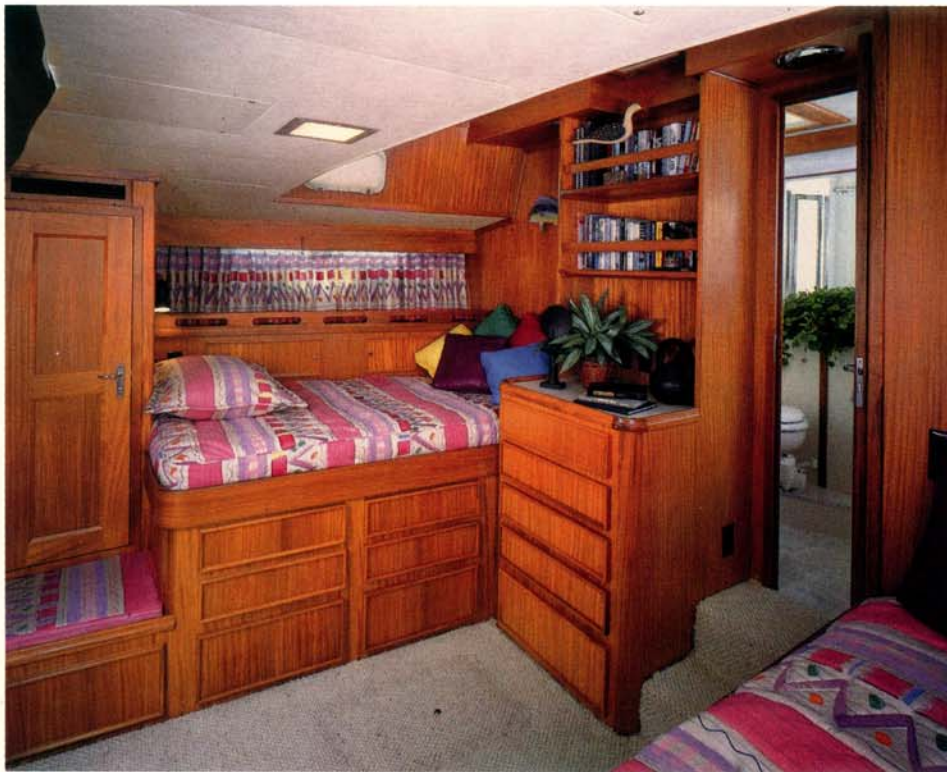
Two additional staterooms forward have teak-and-holly soles, berths for three, ample storage and access to a complete forepeak head with stall shower.

Reverse cycle heating and air conditioning throughout is standard. Each compartment has its own thermostat.

A hot and cold water system is standard, pressurized either by the on-board system or dockside water supply.

The starboard guest stateroom aft of the main saloon has side-by-side twin berths, a hanging locker and complete head with stall shower. Across the companionway, the port guest stateroom duplicates these amenities with over/under berths.





The standard arrangement of the aft owner's suite (top) features a queen-size walk-around berth, cedar-lined hanging lockers and drawer storage adequate for live-aboard cruising. The master head (right) includes expansive counter space and a separate stall shower. The master suite is also available with twin berths port and starboard (above).

The State Of The Art Of Sail

As an experienced large sailboat owner, the moment you step aboard the Hatteras 65 Sail Yacht you will feel at home and know this is a proper yacht.

Her deck layout is uncluttered, functional and on a single level.

The roomy, teak-soled cockpit has a pedestal console with ample space for instrumentation which puts all her strength – under sail or power – at your fingertips.

The forward weather helm, protected by a folding dodger, has full engine controls, space for electronics, and a helm seat.

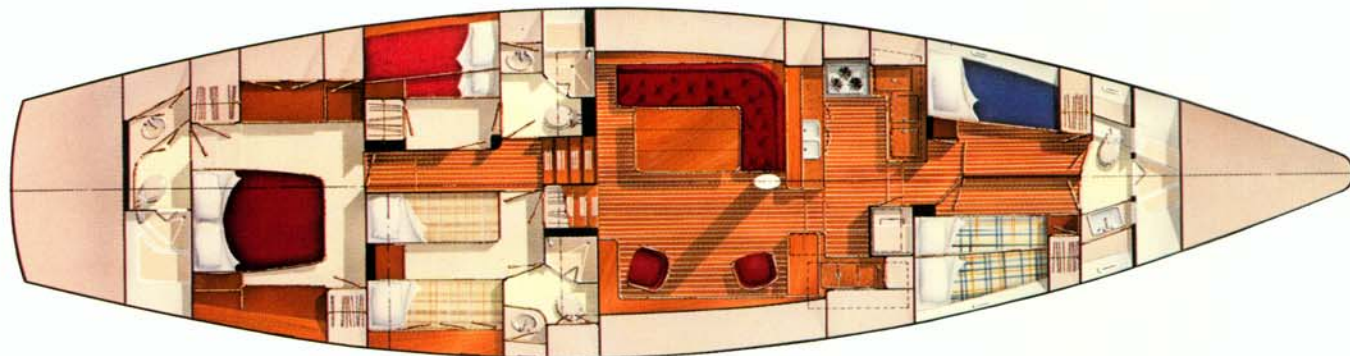
Electric, self-tailing winches give you effortless sail trim and full control of sail furling and reefing.

Her sloop rig carries 1,970 square

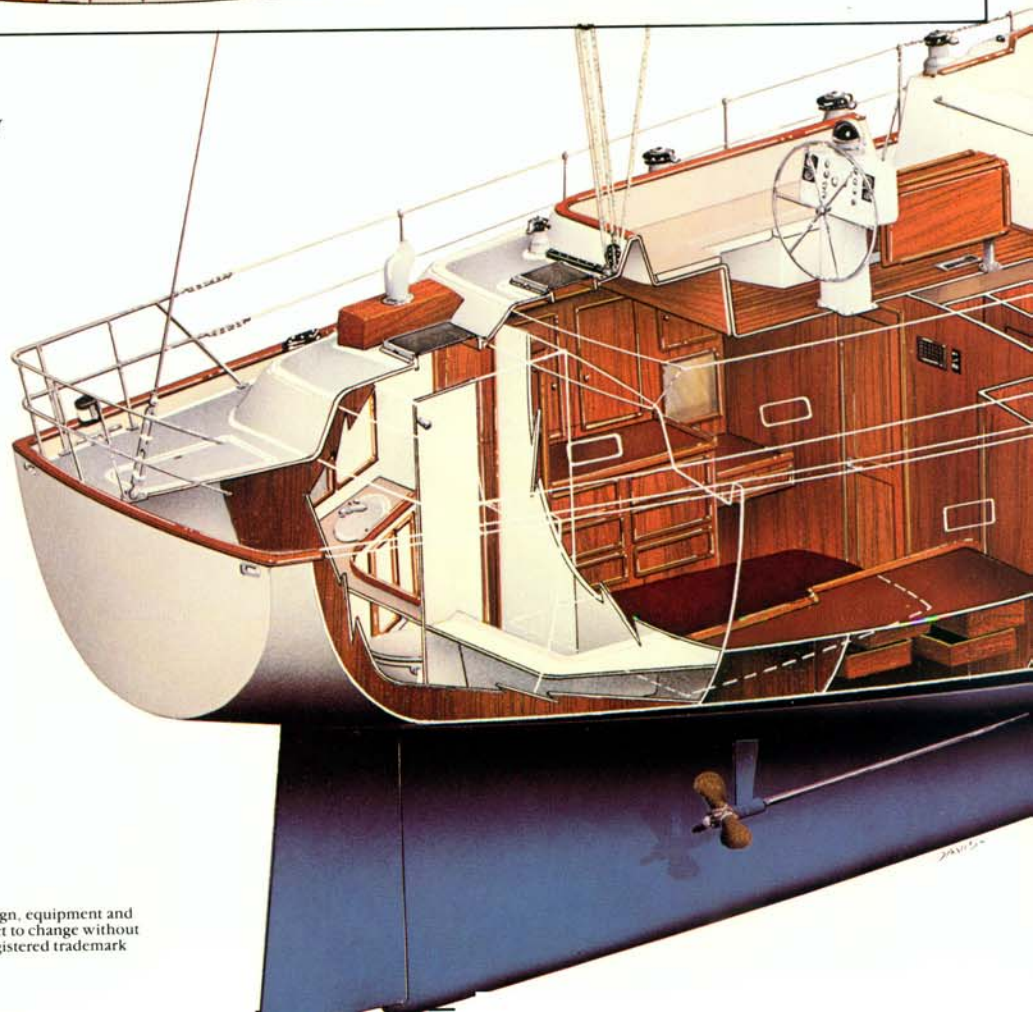
feet of sail with a 100% foretriangle to allow her to sail responsively in even light to moderate winds. Hood mainsail with Stoway self-furling and Hood 130% genoa with Sea Furl roller-reefing are standard. Full spinnaker gear and a selection of special-use sails are optionally available. All lines are led aft to the cockpit.

Twin GM 4-71N diesels provide precise maneuvering in tight quarters. Feathering props provide efficiency under sail. Her cruising range is about 1,000 miles at eight knots cruise speed with fuel capacity of over 700 gallons.

Her draft is 6'5" with the centerboard up for gunkholing in secluded anchorages; 14'5"



The below-decks arrangement of the Hatteras 65 Sail Yacht provides luxurious accommodations for passengers and crew in five private staterooms.



with the board down for open-ocean stiffness.

Her engine room is well thought-out to provide all-around access to the engines and the standard 20 KW remote-start generator. Additional generator capacity is optionally available. The electrical system includes transformer-connected 120/240-volt shorelines with port and starboard connections, 24-volt DC ship's service, and a 12-volt DC system for engine starting and electronics. All electric wiring is color-coded to help identify its function, is secured at least every eighteen inches, and is protected from chafe on all bulkhead pass-thrus. She operates equally well on American or international

electrical voltages and frequencies.

The engine room is equipped with an automatic fire extinguishing system. Also standard is a systems monitor, designed and built by Hatteras, which maintains constant watch with both audible and visible alarms over such vital functions as engine oil pressure and coolant temperature, exhaust temperature, drive oil temperature, AC power loss, engine room fire extinguisher discharge and excess bilge water.

The fiberglass exterior is protected not just with gel coat but with a coat of tough, resilient polyurethane paint which withstands the rigors of the marine environment far better – and far longer – than gel coat alone.

The quality that is built into every Hatteras is the reason our yachts retain such a high percentage of their resale value year after year.

And that quality is the reason the Hatteras 65 Sail Yacht can fulfill its promise to provide durability and comfort wherever the call of the sea beckons.



***Additional Standard Features:**

One-piece cored hull with heavy fiberglass lamination for lightness and strength

Stainless steel rod rigging

Double stainless steel lifelines with stanchions thru-bolted to a continuous backing plate laminated into the entire perimeter of the hull at the sheerline

Stainless steel bowpulpit with electrically-operated windlass and 105 lb. CQR and chain

Flush-mounted anchor storage locker with chain locker access

On-deck cooking gas bottle storage with electronic tank shutoff valve

Pressure salt water system with galley and foredeck outlets

Electrically bonded sea cocks on all underwater fittings

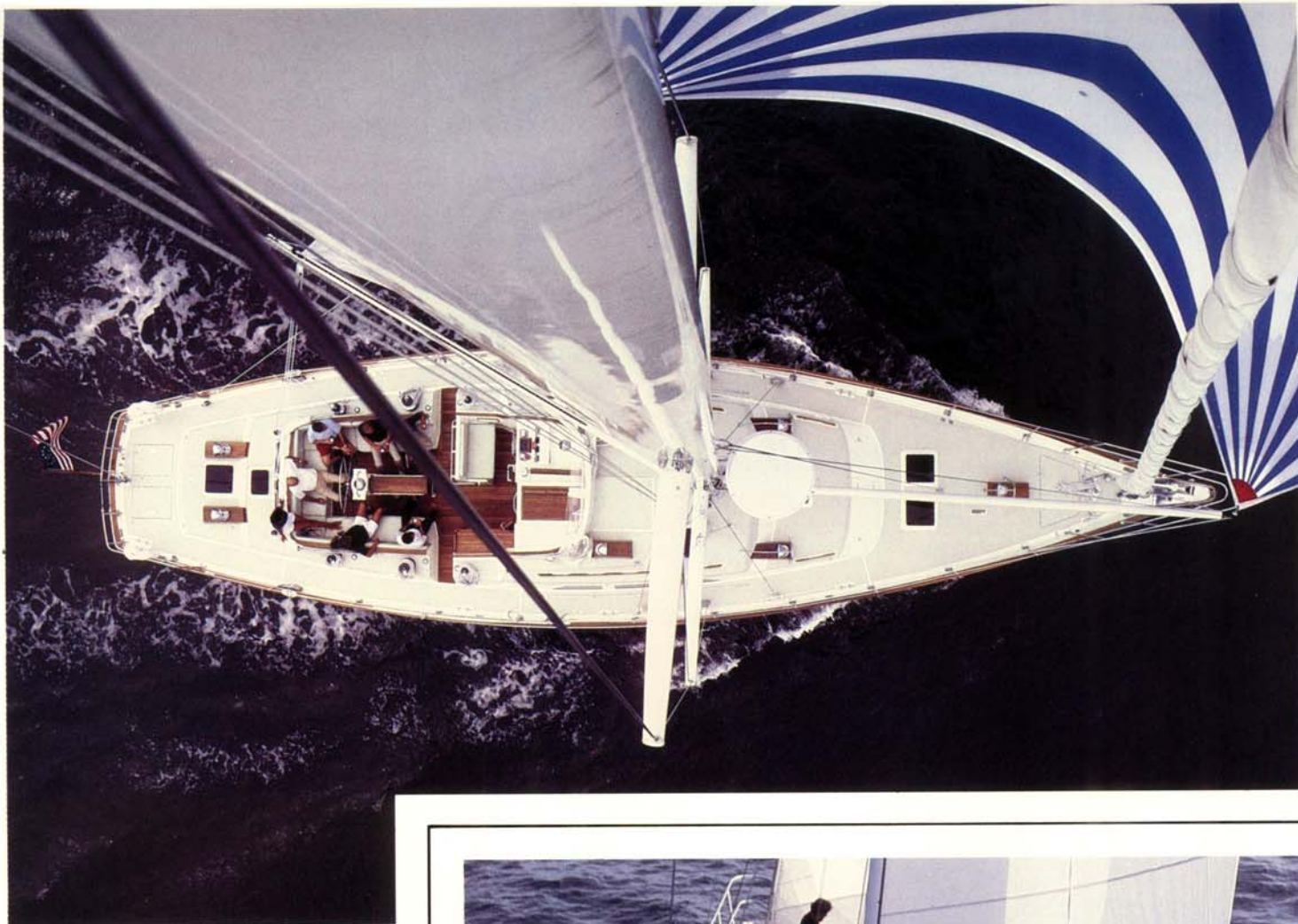
Engine-driven Bilge Pump

Bilge Pumps with Automatic and Manual Switches

12 and 24-volt Battery Chargers

Roomy Lazarette Storage

***For a complete description of standard equipment, consult the Specifications and Equipment list or see your Hatteras dealer.**



From the top of her 88-foot mast (above), the practical cruising design of the 65 Sail Yacht is immediately apparent in her roomy cockpit and functional, single-level deck layout. In the view from astern (right), the clean, powerful lines of her hull are equally evident.



The Excitement Of Sail

The Hatteras 65 Sail Yacht is truly a vessel to sail the oceans of the world.

In her lines is the fluid grace of a bird in flight.

In her hull is strength and sureness and all that man knows of how to build a proper yacht to answer the call of the sea.

Wherever the sea's call beckons you, the Hatteras 65 Sail Yacht is waiting to take you there.

To the far horizon.

And beyond.

Hatteras

AMF Hatteras Yachts
High Point, N. C. 27261 USA



