



65 Sail Yacht By Hatteras

65 Sail Yacht

A new standard of yachting excellence from Hatteras and Hood.

Hatteras is pleased to present a new standard of excellence in yachting — for the experienced large boat owner desiring good performance under sail and power. The 65' Sail Yacht represents a marrying of the skills of Ted Hood, noted ocean racer and boat designer, and Hatteras Yachts, recognized worldwide as a prestigious builder of fine motor yachts.

This new Hood and Hatteras creation is a centerboard design. It is 65'4½" overall and has a waterline length of 54'5", beam of 17'2", and displaces 91,500 pounds. Draft with board up is 5'10" and with board down measures 13'10". The sloop rig with 89 foot mast above the waterline carries 1,936 square feet of sail with a 100% fore-triangle and is designed to sail fast even in light to moderate winds. The rigging system includes a self-stowing mainsail and roller reefing genoa.

A Floor Plan for Optimum Comfort

The layout of the new yacht is keyed to optimum cruising comfort for owner, guests and crew. There are five staterooms and four complete heads, each having a fully enclosed stall shower. The owner's stateroom is located aft and features a queen size walk-around berth, two hanging lockers, dresser and vanity/desk. The owner's private head is aft of the stateroom and has a large stall shower. An optional arrangement for the owner's stateroom includes single berths.

There are two guest staterooms aft, each with a complete adjoining head. The starboard guest stateroom includes side-by-side twin berths, hanging locker and drawer storage and its own complete, private head. The port guest stateroom has upper/lower berths, drawer and locker storage and private access to the port head which also has access from the aft companionway for day use.

Two staterooms are forward; both include upper/lower berths and both have access to a complete forepeak head. The starboard stateroom is designed as the captain's quarters, and the port stateroom can serve as additional crew quarters or as a third guest stateroom, depending on needs.

The large amidships saloon is open to the galley area which is forward and two steps lower. The areas are separated by a waist-high bulkhead topped with serving

counter to port, and a bar cabinet to starboard. The large galley area running the full beam of the yacht includes all desired amenities; holding plate refrigerator, holding plate freezer, microwave oven locker, stove with oven and ample storage space. There is also a full length locker forward which is sized to enclose an optional clothes washer/dryer. The saloon features a built-in lounge, drop leaf table, book cases, and navigation station. The saloon is situated to provide convenient viewing through the cabin's tinted safety glass side windows when seated.

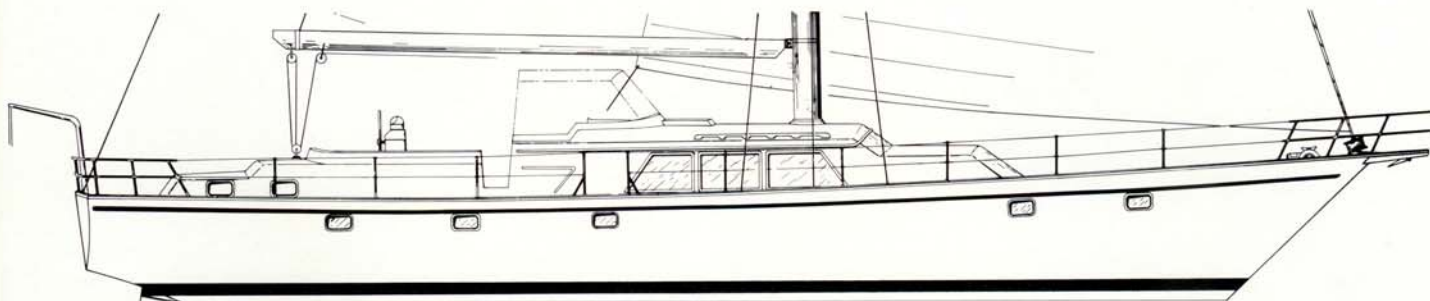
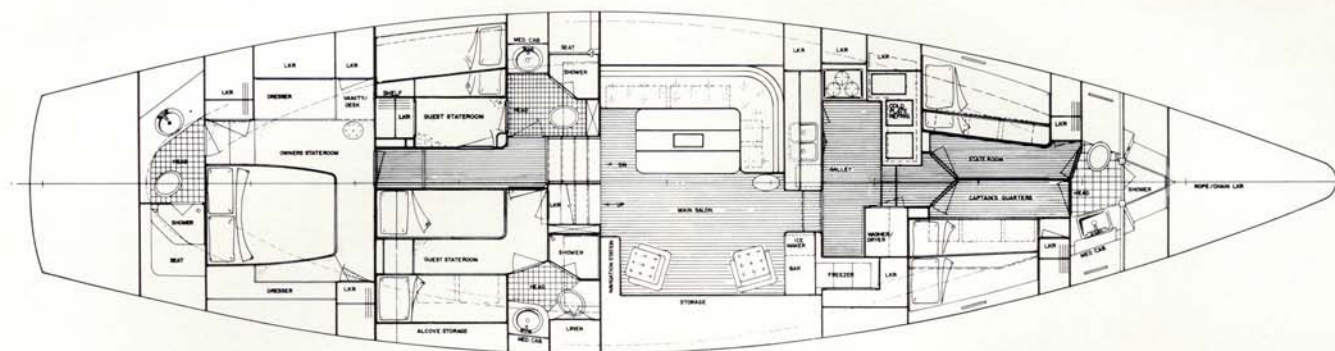
Technical Achievements for Reliability and Durability

The latest in Hatteras electrical and mechanical systems are included. The 65' Sail Yacht is fully air conditioned with each compartment having separate thermostats. The electrical system includes a 20 KW generator, 240 V transformer connected shorelines, 24V DC ship's service and a 12V DC system for engine starting and electronics.

The engine room is designed to provide maintenance accessibility and is entered from the aft passageway. Power is provided by twin G.M. 4-71N diesels workboat rated at 115 horsepower at 1800 RPM. The twin installation also provides maximum maneuverability in tight quarters and because of the use of feathering props, efficiency is maintained while under sail. A fuel capacity of approximately 750 gallons provides a range under power of an estimated 1,000 miles at 9 knots cruise speed. Water capacity is 350 gallons and a reverse osmosis watermaker is available as optional.

The main deck is on one level for easy traverse and features a non-skid surface, welded stainless steel stanchions with life lines, teak bulwark cap and two primary and two secondary self-tailing DC electric winches. The cockpit has spacious side and aft seating, pedestal helm with full controls, binnacle, instrumentation and offers excellent visibility. Forward in the cockpit there is a second all-weather helm station with helmsman and companion seats protected by a folding dodger.

The new 65' Sail Yacht will be built at the Hatteras New Bern, North Carolina plant. For additional information and the name of your nearest Sail Yacht dealer contact Hatteras Yachts.



Preliminary Design Specifications:

Length Over All	65'4 1/2"	19.91 m
Waterline Length	54'5"	16.59 m
Beam	17'2"	5.23 m
Draft, board up	5'10"	1.78 m
Draft, board down	13'10"	4.22 m
Displacement (est.)	95,000 lbs.	43,100 kg
Fuel Capacity	750 gals.	2,838 ltr.
Freshwater Capacity	350 gals.	1,325 ltr.
Height d.w.l. to top of mast	90'0"	27.43 m

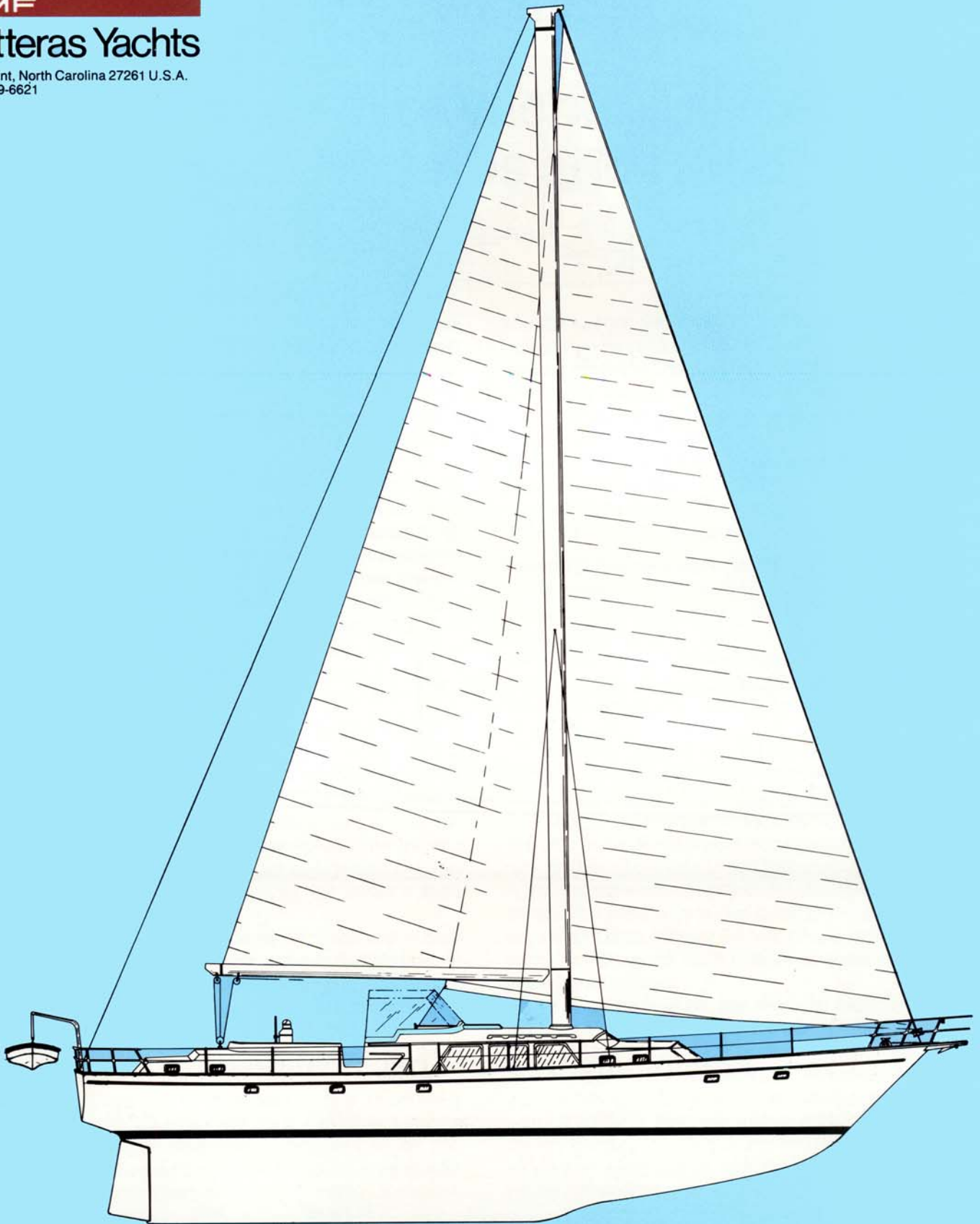
I = 81.25'
 J = 26.0'
 P = 71.16'
 E = 24.75'

Sail Area	1936 sq. ft.
Main	880 sq. ft.
100% Ft.	1056 sq. ft.

AMF

Hatteras Yachts

High Point, North Carolina 27261 U.S.A.
(919) 889-6621



65SY 3 0282
Printed in U.S.A.

AMF Hatteras Yachts reserves the right to make styling, design, equipment and construction changes without notice. Also, prices are subject to change without notice. Some items shown may be optional.
Hatteras is a registered trademark of AMF Incorporated © 1982 AMF Incorporated