

HATTERAS YACHTS

70 CONVERTIBLE

70 CONVERTIBLE

This tournament proven winner, the Hatteras 70 Convertible, is designed for the yacht owner who demands luxury, the comforts of a magnificent cruising yacht and the features of a serious sportfisher when you need them. Smooth lines and curving intersections give her the popular seamless look others can only envy.

The super 70 boasts an 18' beam that provides for a luxurious four-stateroom, four-head standard interior arrangement. The full beam master stateroom offers a king-size berth, entertainment center, and fabulous private head. The bow stateroom is outfitted with a queen-size walk-around berth with pop-up access to under berth storage, while other guest staterooms provide upper/lower berths and converting twin-to-queen accommodations.

The expansive salon with full galley features a comfortable lounging area complete with entertainment center and wet bar. The standard fluted wood valances with blinds and frameless windows add to the 70's interior elegance. The standard enclosed bridge provides all the necessities for fishing or cruising and may even be accessed via an optional interior stairwell. An additional aft control station is also located on the bridge for convenient fishing and dock maneuverability.

The large aft deck provides space for an optional chipped icemaker or molded fiberglass seating with cushions. A few steps below, the 159 square-foot cockpit is a sportfisherman's dream complete with twin storage boxes flush in-deck, refrigerator/freezer, molded-in transom fish box, seawater and freshwater wash downs and rod holders.

It is easy to see why the Hatteras 70 Convertible continually proves itself to be the ultimate world-class, long-range sportfishing yacht.



While today traditions are fast becoming an endangered species, I take great pride in the way my family has kept one intact for three generations. Ever since my grandfather built his summerhouse in Newport, Rhode Island, we've migrated there from our home in Mystic, Connecticut aboard our Hatteras 70 Convertible each Fourth of July. Among the great houses of the Vanderbilts and Rockefellers, my grandfather first brought my father aboard his 41 Double Cabin to witness this annual celebration. It began the tradition that to this day my brothers and I keep alive. After a family dinner on the grounds of my grandfather's great house, we return to our yacht and watch the fireworks from the deck. It is magical, like visiting another time where moments like this were a daily part of life. Hatteras Yachts knows a thing or two about tradition and heritage, which is why three generations of my family have owned them. Someday my grandfather's house will pass on to my children. It's comforting to know that so will my Hatteras.



Just past Point Judith. My
brothers and I open up my 70
to get the fresh catch home to
enjoy before the fireworks begin.



Early Thursday morning.
Michael laments the one
that got away.

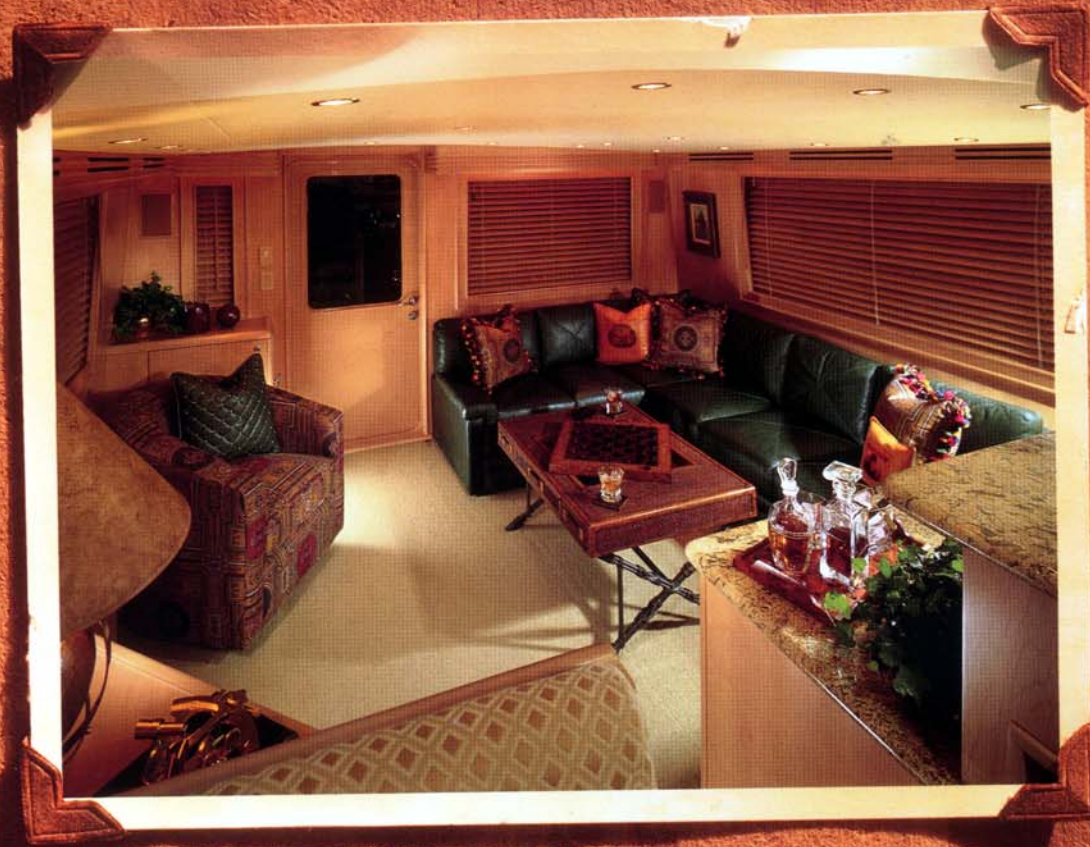




The 70 Master Stateroom



The 70 Galley/Dinette



The 70 Salon



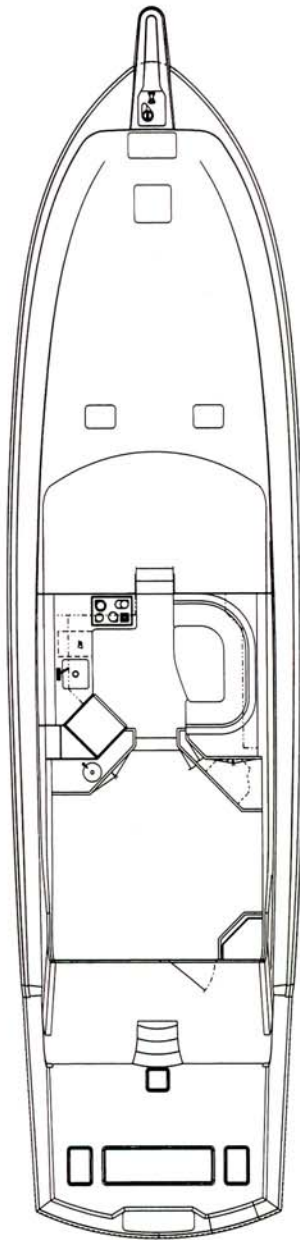
The 70 Pilothouse



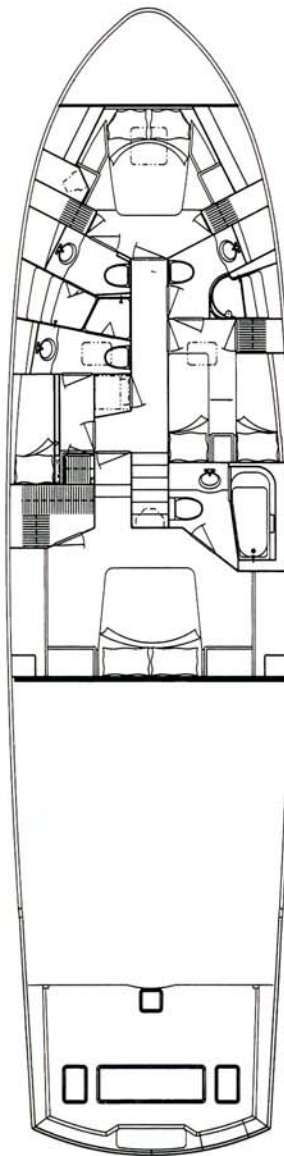
The Hatteras 70 Convertible



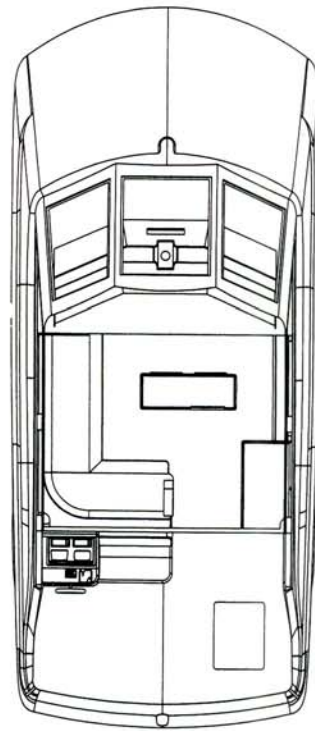
70 CONVERTIBLE



UPPER DECK
STANDARD ARRANGEMENT



LOWER DECK
STANDARD ARRANGEMENT



BRIDGE

SPECIFICATIONS

Length	70'3 1/2"	21.42 m
Beam	18'0"	5.49 m
Draft	6'1"	1.85 m
Fuel	1,988 gals	7,525 ltrs
Water	365 gals	1,381 ltrs

The 70 features four staterooms, each with its own private head, an expansive salon and dining area, and nearly 159 square feet of cockpit space. The flybridge is enclosed with plenty of guest seating and a state-of-the-art helm console.

Hatteras®

110 North Glenburnie Road, New Bern, NC 28560 1-252-633-3101 www.hatterasyachts.com