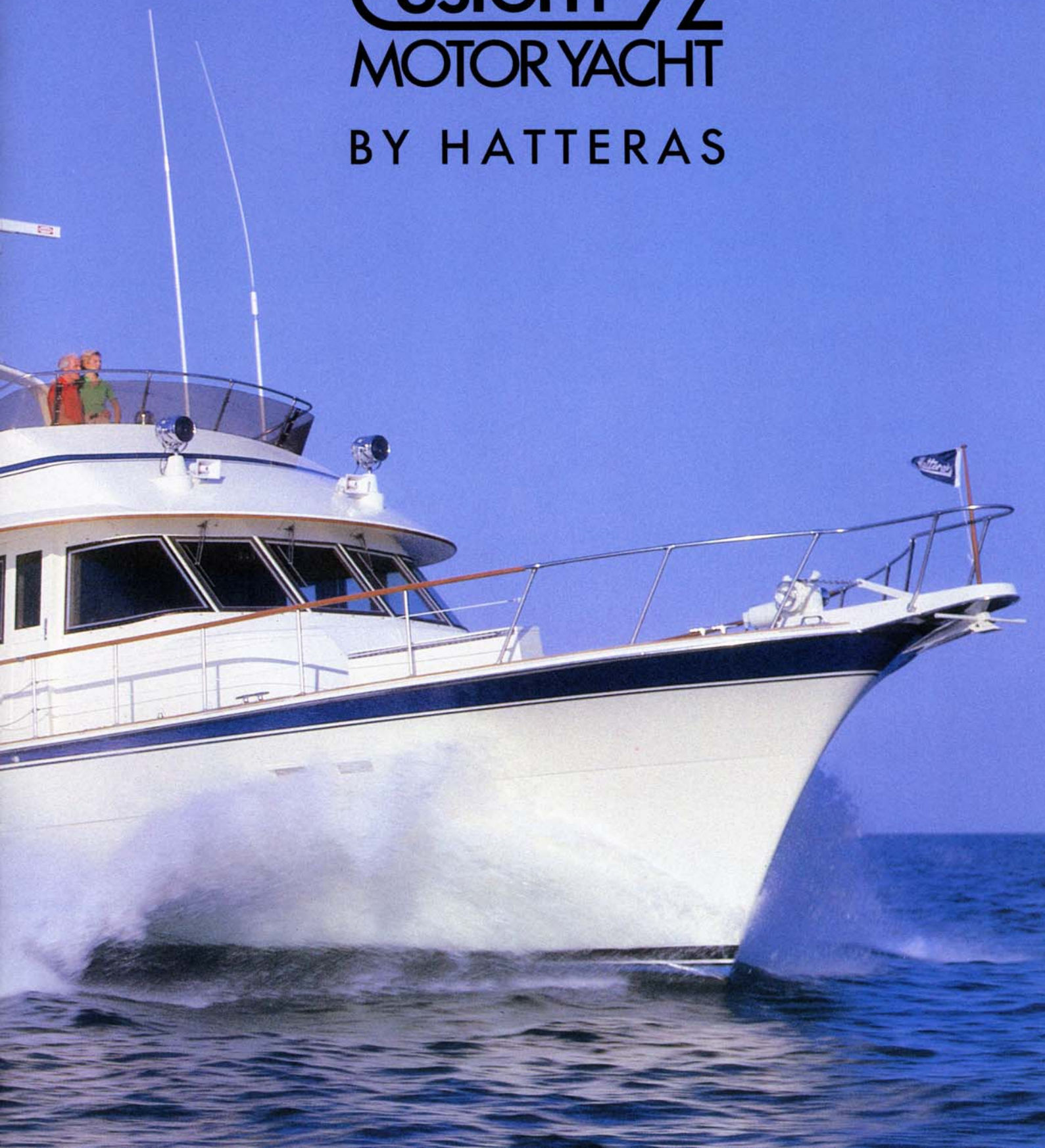


Custom 72  
MOTOR YACHT  
BY HATTERAS





**T**he Hatteras Custom 72 Motor Yacht represents a new approach to the creation of a distinctive vessel which you, as a discriminating yachtsman, will be proud to command into any port in the world.

We have commissioned renowned naval architect J. B. Hargrave to focus the full range of his extensive large yacht experience on her design which combines both proportioned grace and a sense of restrained power.

From Hargrave's knowledge and our own twenty-five years of experience in satisfying the needs of large yacht owners, we have specified for her an appropriate combination of high-horsepower diesel engines and their related equipment which gives her the ability to challenge the offshore waters of the world with dependability and comfort.





Our design engineers have refined her basic layout into one which our experience indicates will meet the needs of most owners of a yacht of this class.

Our mechanical and systems engineers have meticulously detailed her propulsion and on-board systems. The design and building of over five thousand quality yachts has enabled us at Hatteras to refine our electrical, air conditioning, heating and

plumbing systems into some of the most sophisticated and reliable available on any pleasure yacht in the world.

Because we have already completed the basic design of the Custom 72, you will realize significant savings of both time and money at every step from preconstruction planning to launching.

Now our designers and craftsmen await only your statement of the ambience and degree of customization you would like for us to create aboard the Custom 72 which perfectly suits your individual personality and lifestyle.

Our design engineers will work with you to detail the interior of the vessel according to your wishes. You will also have at your disposal the resources of our experienced Yacht Fashion staff to help you select that combination of carpet, draperies, furnishing and accessories which reflects your personal sense of style.

The 72's galley (inset, upper left) features a practical, efficient layout while the pilot house (inset, upper right) provides expansive console space for navigation and communication electronics. The full-beam salon can comfortably accommodate both dining and lounging areas.





Once the final design is completed to your specifications, your vessel will be crafted by the "hands at Hatteras" who will combine over a quarter of a century of boat building tradition with state-of-the-art materials and the latest boat building technology to construct your vessel in a carefully controlled process.

As we walk through the Custom 72 in these pages, bear in mind that the approach illustrated in the accompanying photographs represents only one expression of the environment which our designers and craftsmen can create. The look and feel of *your* Custom 72 will be dictated by your own desires.





The moment you step aboard, you will recognize that the Hatteras Custom 72 incorporates significant achievements in the art of designing and building a proper yacht.

The pilot house is placed well forward for excellent visibility, and more than adequate space is provided to allow the installation of a full array of communication and navigation electronics at your fingertips.

Just aft of the pilot house is the 72's galley which could easily serve the needs of a fine, intimate restaurant. It is fully equipped with an electric range and oven, microwave oven, built-in food processor, double stainless steel sinks with disposal, a large upright refrigerator/freezer and ample storage space.

The area to starboard, opposite the galley, can be completed at your option either as a dinette or as a storage pantry. If you wish, this area can also accommodate a convenient on-deck day head.

Aft of the galley, through a recessed sliding door, is the main salon which takes maximum advantage of the vessel's 18' 7" beam. Large windows give the salon an open, airy feeling. Within this space —

as throughout the 72 — the designers and craftsmen at Hatteras can create for you an environment as traditional as a wood-paneled library or as contemporary as a New York penthouse.

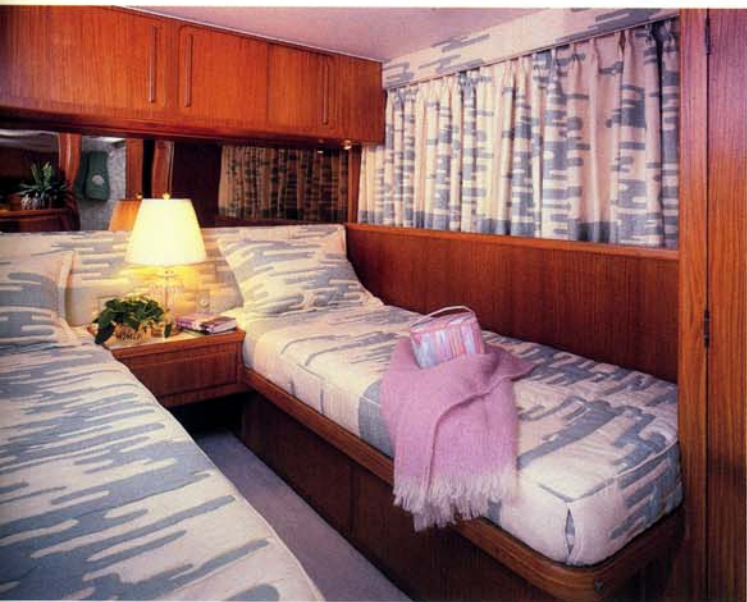
In the approach presented here, our woodcraftsmen have utilized rich, natural woods and innovative woodworking techniques to produce a dramatic wet bar/entertainment center topped with burl wood which curves around the stairs leading to the below-decks stateroom area. This same theme is carried out in a corner, lighted china cabinet and a buffet beneath the aft window.

Beyond the main salon is an aft deck for easy line handling, stowage and convenient boarding from the swim platform.

From the salon, a curving stairway leads to the master suite and guest staterooms below.

The owner's suite is offered in its basic layout with either a king-size bed or optional twin berths; built-in vanity; a walk-in, cedar-lined wardrobe; dressers with drawer storage, and a full head with tub/shower combination. You, of course, may have different ideas as to how you wish this area configured.

The master suite's stateroom and head (insets, left) provide you, the owner, a quiet, private retreat while your guests are accommodated in equal luxury in two staterooms (insets, right) each of which has a private head adjoining.







Forward of the master suite are two guest staterooms, each with twin berths, hanging locker, dresser with drawer storage and private head with stall shower.

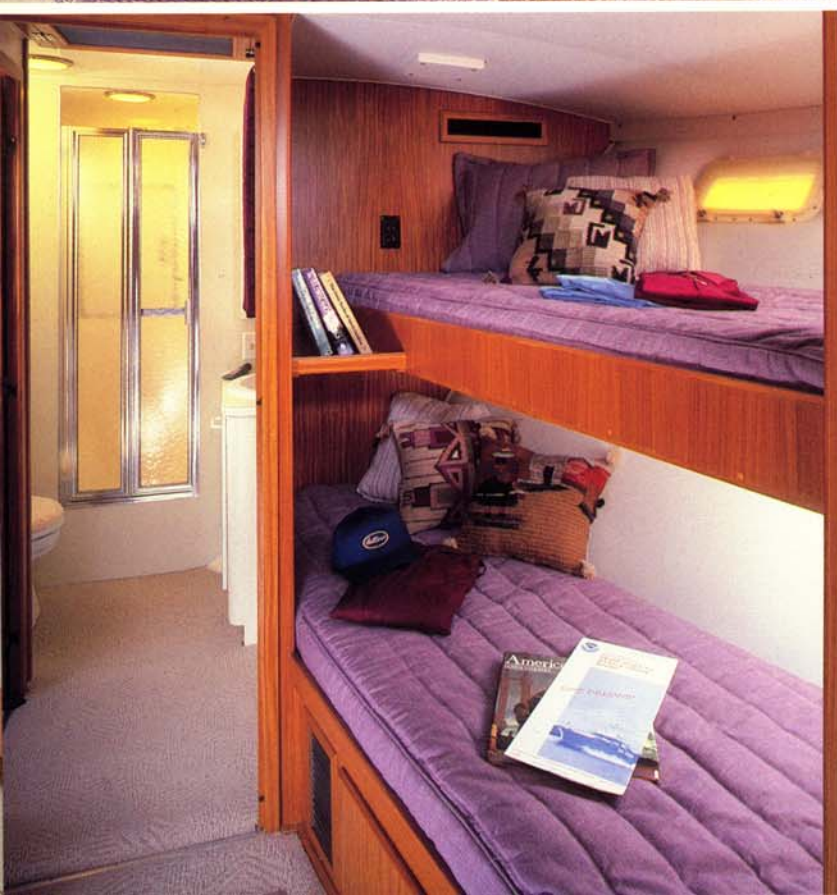
The aft companionway also features a double-door linen locker.

Forward in the 72 is an area normally designated as the crew's quarters which is separated from the master suite and guest staterooms by the engine room and is accessible by a curved stairway from the pilot house.

In its usual configuration, this area provides a private captain's stateroom to port and crew stateroom to starboard with upper and lower berths.

Both staterooms feature a hanging locker and dresser with drawer storage and share a full head forward with stall shower.

Adjoining the crew's quarters is a comfortable lounge area which includes a dinette and food preparation area featuring a sink, electric surface





unit and under-counter refrigerator/freezer. A washer and dryer are also conveniently located in the forward area.

Access to the walk-in engine room is from the crew area. Beside providing all-round access to the vessel's engines and related equipment, the engine room also provides space for dual generators, automatic engine room fire extinguisher system, central vacuum cleaning system, a work bench and the additional equipment normally found aboard a vessel of this caliber. All equipment has been carefully positioned for easy access and maintenance, and space is available for additional equipment you might choose, such as a watermaker.

The bridge deck of the 72, accessible by a ladder from the pilot house, has been carefully laid out to make maximum use of its generous area.

The flybridge steering station provides ample space for the convenient placement of navigation and communication electronics. The arch serves as a handy location for a radar scanner. If you choose, you may cover the forward part of the flybridge with an optional folding bimini or fixed top.

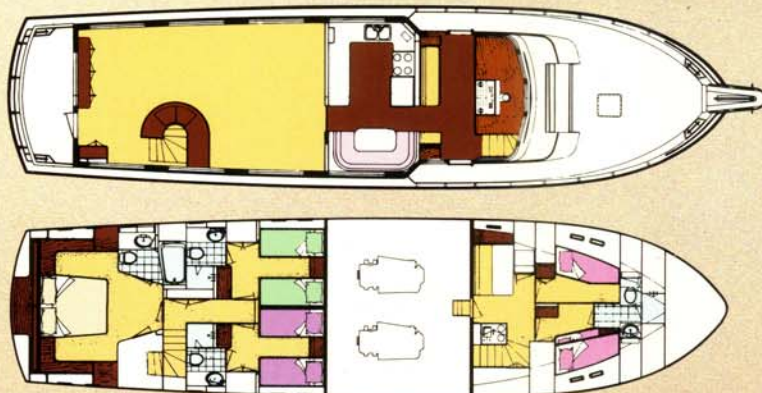
Aft of the steering station is an expansive area for entertaining and lounging which

allows you a wide range of customizing opportunities. This area may be outfitted with a variety of seating arrangements and a wet bar with ice-maker and bottle and glass storage.

On the hardtop, aft of the bridge deck, is space for mounting a dinghy and launching davit.

The Hatteras Custom 72 Motor Yacht offers you the best of all worlds: a Hargrave design; Hatteras' proven engineering expertise, woodcrafting excellence and sophisticated boat building technology; and the design flexibility to create a yacht which is uniquely and personally your own.

The typical arrangement of upper and belowdecks areas shown below can be modified to meet your individual cruising requirements.



When completed as crew quarters, the forward area can accommodate a double berth crew stateroom (inset, far left) and a private captain's stateroom (inset, lower left) which share a forward head.

The area also can be equipped with a food preparation area and crew dinette. The

72's bridge deck offers space for a flybridge steering station, guest lounging and dinghy stowage.

The engine room allows easy access to the engines and systems equipment.





HATTERAS  
AMF Hatteras Yachts  
High Point, NC 27261 USA

