

Custom Yachts

BY HATTERAS

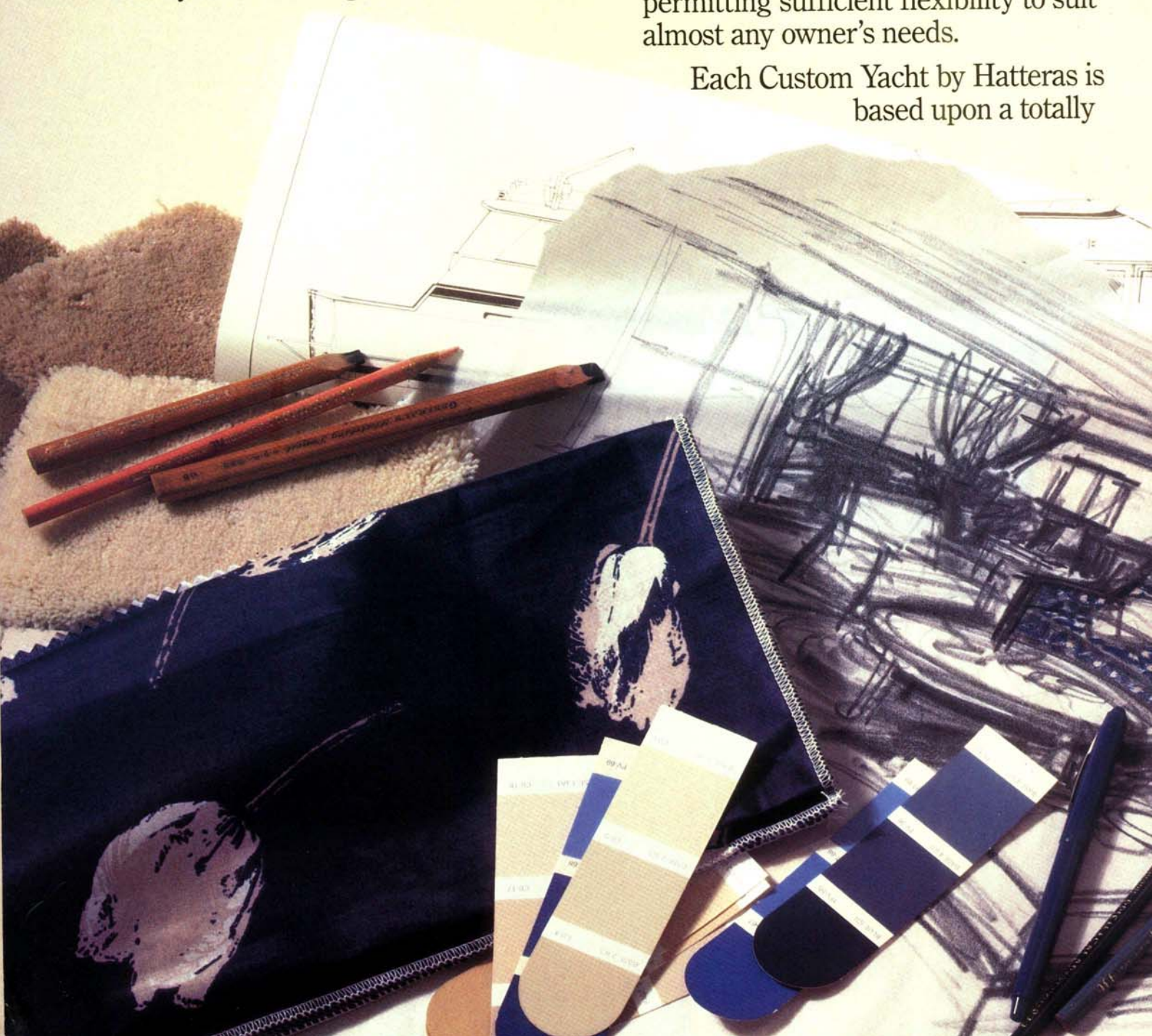


Over the past quarter of a century, Hatteras has developed an unquestioned reputation for designing and crafting the most comfortable, luxurious and durable production yachts in the pleasure marine industry.

The motor yachts, long range cruisers and sport fishermen which today bear the Hatteras name are the result of twenty-five years of our meticulous refinement of hull design, propulsion engineering and systems development.

This reputation for dependability has made Hatteras by far the largest builder of production yachts in the world, a position that has, over the years, given us exposure to many owners of large yachts. Our contact with these owners has led us to understand their requirements for special styling and interior accommodations. Now, through our unique Custom Yachts concept, we are able to create large vessels that meet Hatteras' own demanding standards for reliability, while permitting sufficient flexibility to suit almost any owner's needs.

Each Custom Yacht by Hatteras is based upon a totally

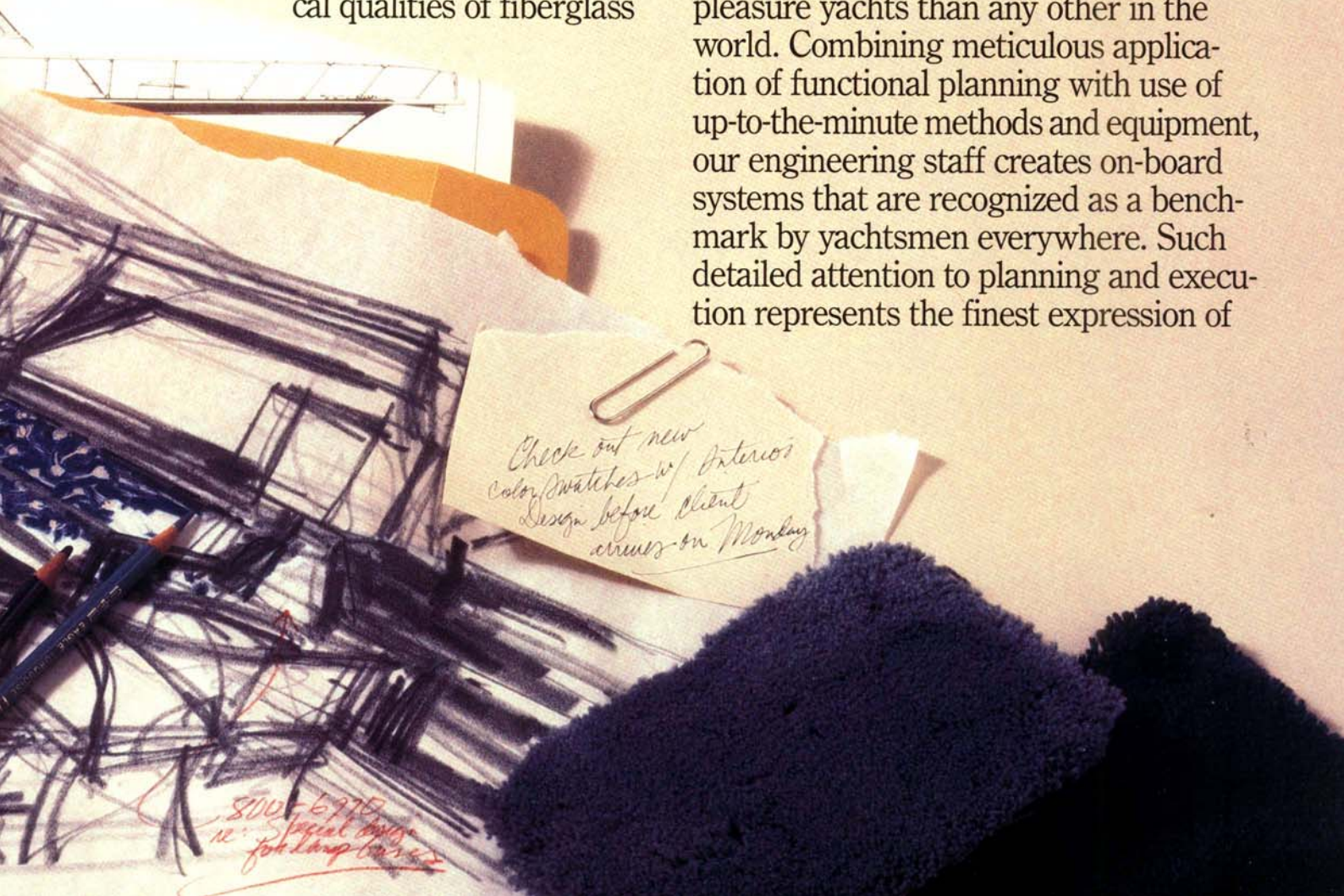


engineered hull design that combines Hatteras' experience with the creative abilities of naval architect Jack Hargrave to anticipate the needs of a wide range of discriminating yachtsmen. With the basic hull already established and proven, you will realize significant savings of time and money every step of the way from the preconstruction planning stage right through to launching.

Custom Yachts by Hatteras are crafted of fiberglass, using carefully constructed molds that faithfully reproduce the architect's intentions. Each mold is painstakingly shaped and polished so that the finish of the hull and superstructure will surpass the expectations of the most discriminating owner. Hatteras' thoroughly tested fiberglass lay-up process provides incredible strength, while the inert chemical qualities of fiberglass

serve to eliminate rust, rot and galvanic corrosion. Once removed from the mold, the gelcoated surface is sprayed with a coat of polyurethane, a material chosen by Hatteras because of its superior resistance to the harsh marine environment. This tough, lustrous coating lends a final measure of protection to the finish of each Hatteras yacht. All of this attention to detail in designing and building adds up to a significant reduction in hull maintenance downtime and cost.

Each Custom Yacht by Hatteras is thoroughly designed by the largest, most experienced engineering staff in the industry. This staff, comprising a team of specialists who are recognized leaders in the fields of marine mechanical systems, electronics, hydraulics and construction, has developed more new technology for pleasure yachts than any other in the world. Combining meticulous application of functional planning with use of up-to-the-minute methods and equipment, our engineering staff creates on-board systems that are recognized as a benchmark by yachtsmen everywhere. Such detailed attention to planning and execution represents the finest expression of



the Hatteras philosophy: We build yachts to be reliable and durable to ensure owner satisfaction today and in the years to come.

In the final analysis, Hatteras' commitment to excellence and the lessons learned in its years of yacht building experience add up to a Custom Yacht of enduring value.

Along with their built-in value, Custom Yachts by Hatteras provide a built-in range of options allowing you to design a yacht that reflects your individual requirements.

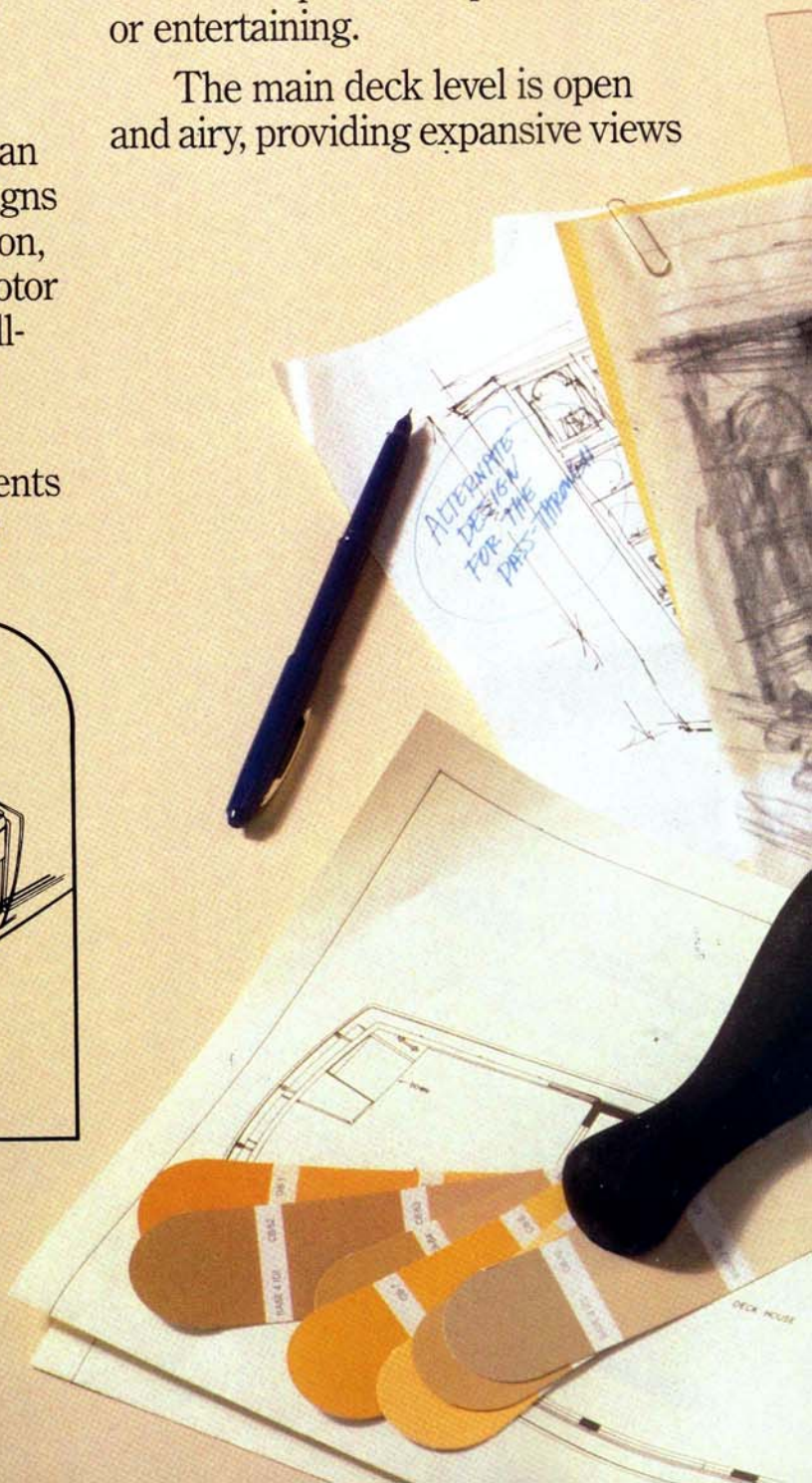
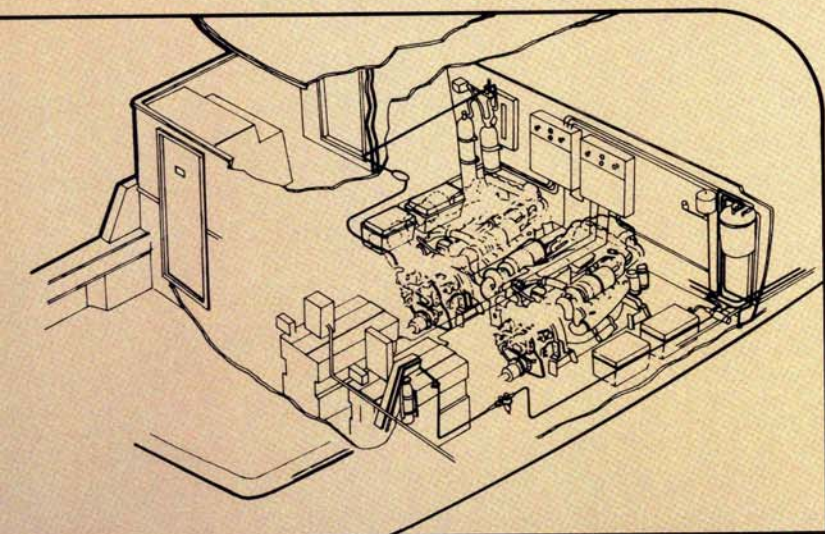
Your Custom Yacht by Hatteras can be constructed on any of five basic designs – a 72 Motor Yacht with full-beam salon, a 77 Motor Yacht and a 77 Cockpit Motor Yacht, each available with either a full-beam salon or in a configuration that provides walk-around side decks.

Each model blends the best elements of classical and contemporary styling

with a no-nonsense functionality to create a yacht that works – whether as a year-round residence or leisure time haven – for your pleasure and that of your friends and associates.

Above deck areas are designed to provide the maximum benefits of outdoor living. The expansive bridge deck contains a complete control station with unexcelled visibility, while allowing plenty of flexible space for topside lounging or entertaining.

The main deck level is open and airy, providing expansive views



from the weather protected living area, which may be outfitted to suit the owners taste – from casual coziness to grand ball-room formality.

A complete pilot house forward of the living area provides for all weather operation of your Custom Yacht.

In some models, two broad types of design are available. For the owner desir-

ing maximum enclosed living space, the full-beam salon arrangement stretches on-deck space nearly to the sheer, while the walk-around side deck arrangement allows traffic to flow from foredeck to aft deck without disturbing those using the main salon.

Below deck areas provide space for



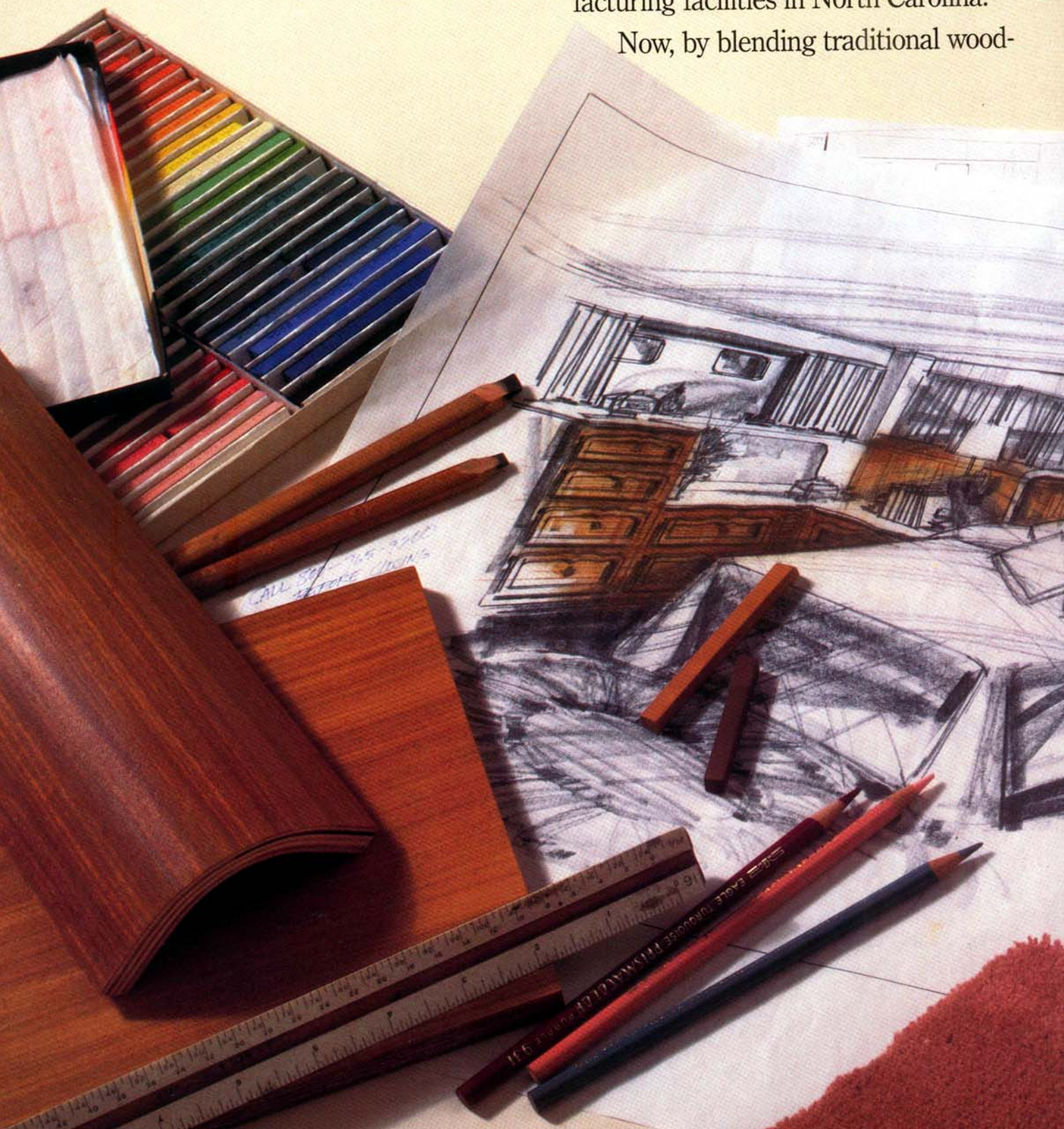
the owner's suite, guest staterooms and crew's quarters with sufficient adaptability in layout and decor to make this yacht uniquely your own.

Hatteras' experience has been combined with thoughtful anticipation to provide the perfect foundation upon

which to build the Custom Yacht of your dreams.

As for interior appointments, Hatteras yachts are justifiably famous for their quality woodwork, the result of long association with the skilled furniture artisans found in abundance near Hatteras' manufacturing facilities in North Carolina.

Now, by blending traditional wood-

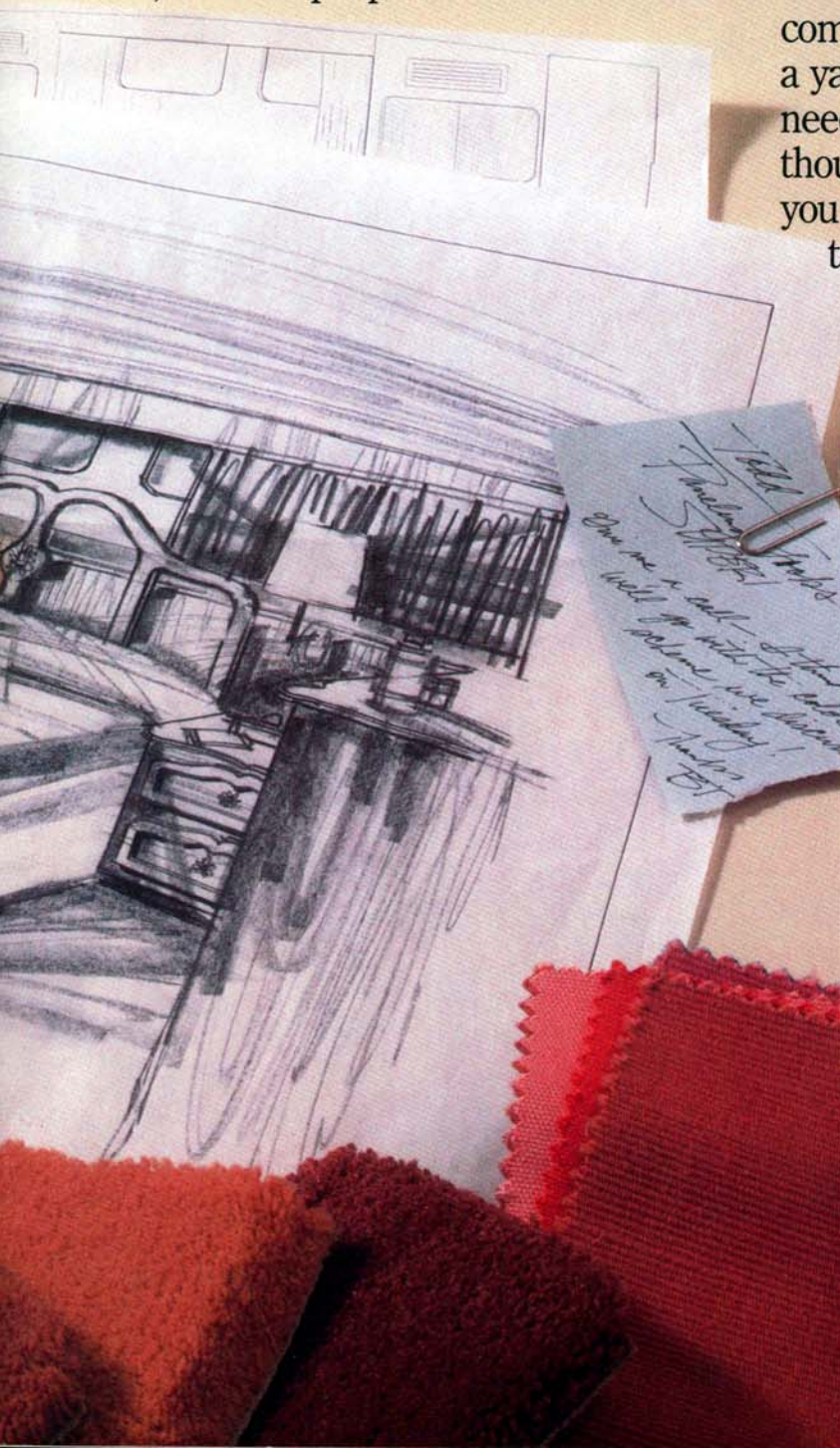


working artistry with state-of-the-art techniques and rare, exotic, natural woods, Hatteras craftsmen have developed new, exciting methods that allow them to fashion the world's most beautiful and innovative yacht interiors. Cabinetry and woodwork can, of course, be customized to provide your own personal touch.

When it comes to decor, Hatteras offers its Custom Yacht clients the services of a fully experienced in-house design studio, the sole purpose of which is the

tasteful outfitting of your yacht in a fashion that suits your particular requirements. Unlike the land-oriented designer who occasionally takes on a yacht decoration assignment, Hatteras' fashion studio staff can call upon a unique blend of experience and specialized knowledge encompassing the worlds of fashion and yachting to help you create a custom interior that is both distinctive and practical.

Your thoughts and Hatteras' experience and quality become an unbeatable combination, a force for the creation of a yacht to accommodate your particular needs and desires. If you have been giving thought to commissioning a custom yacht, you owe it to yourself to explore the advantages of Custom Yachts by Hatteras.



72 MOTOR YACHT

For many, the focal point of the 72 Motor Yacht will be the surprisingly large amount of space available on the main deck. The basic deck house offers well over three hundred square feet of enclosed salon for living and entertaining. A fully equipped galley separates the salon from the forward located pilot house, which provides excellent visibility and space for a wide range of electronics. A dinette or a day head adds flexibility to the main deck area.

The bridge deck has room for a tender, a complete

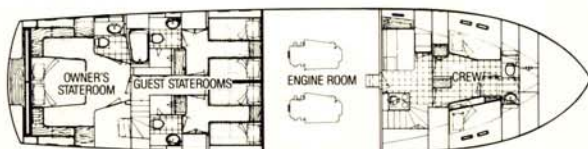
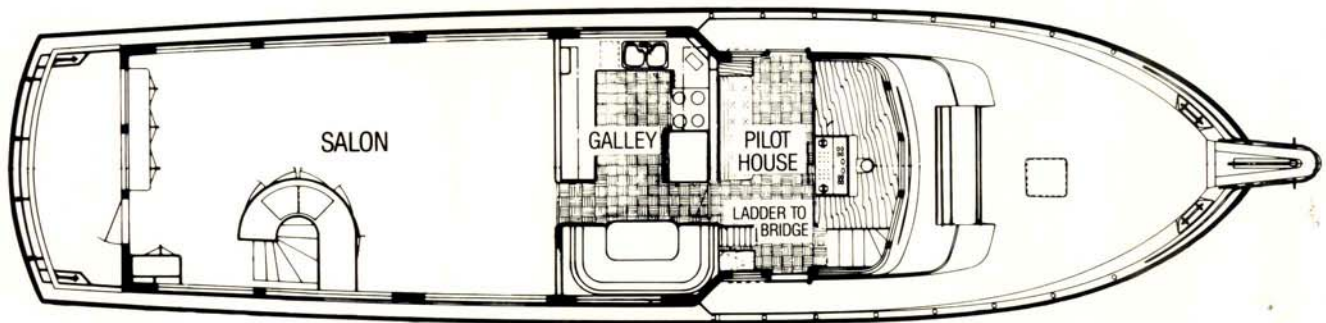
control station and abundant lounging and entertaining space.

Below decks, the accommodations are divided into two expansive areas intended for an owner's stateroom and two guest staterooms, each with private heads, plus crew's quarters and lounge, totaling more than six hundred square feet.

Between the two accommodations areas, the midships engine room houses twin G.M. 12V-71TI diesels and an array of equipment that includes dual 20KW generators and an automatic fire extinguishing system.

72 MOTOR YACHT SPECIFICATIONS

Length Overall	72'8"	22.15 m	Fuel Capacity	1,650 Gals.	6,245 ltr
Beam	18'7"	5.69 m	Weight Displacement	109,000 Lbs.	49,440 kg
Draft	5'0"	1.52 m	Height - Waterline to top of mast on arch	26'3" (est.)	8.00 m (est.)
Freeboard - Forward	9'7"	2.92 m	Height - Waterline to top of flying bridge windshield	19'7" (est.)	5.97 m (est.)
Freeboard - Aft	7'2"	2.18 m			
Headroom Most Areas	6'6"	1.98 m			
Fresh Water Capacity	400 Gals.	1,510 ltr			



77 MOTOR YACHT

The 77 Motor Yacht is available in either full-beam salon or walk-around side deck configurations. The walk-around style eases in-port line handling, while the full-beam model maximizes the square footage of your indoor living and entertaining area. Further livability can be created by enclosing the aft deck.

The galley is located just aft of the pilot house, which has room for a full complement of marine electronics. The spacious flying bridge and bridge deck provide additional area for outdoor lounging and entertaining.

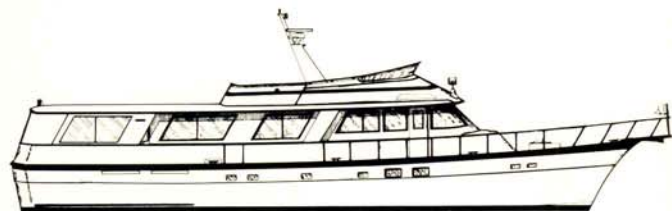
Below decks, the accommodations area is divided into two expansive areas, one forward normally used for crew's quarters and lounge, the other amidships designed to accept a full-beam owner's stateroom and two guest staterooms, all with private heads.

The aft engine room houses twin G.M. 12V-71TI or 12V-92TI diesels. The engine room layout is carefully planned to allow easy access to all basic components for routine service and maintenance.

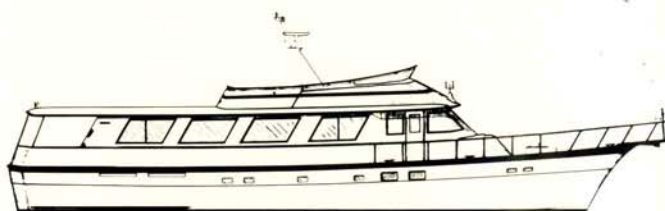
A utility room in the stern provides space for a workshop, washer, dryer, extra freezer or equipment storage.

77 MOTOR YACHT SPECIFICATIONS

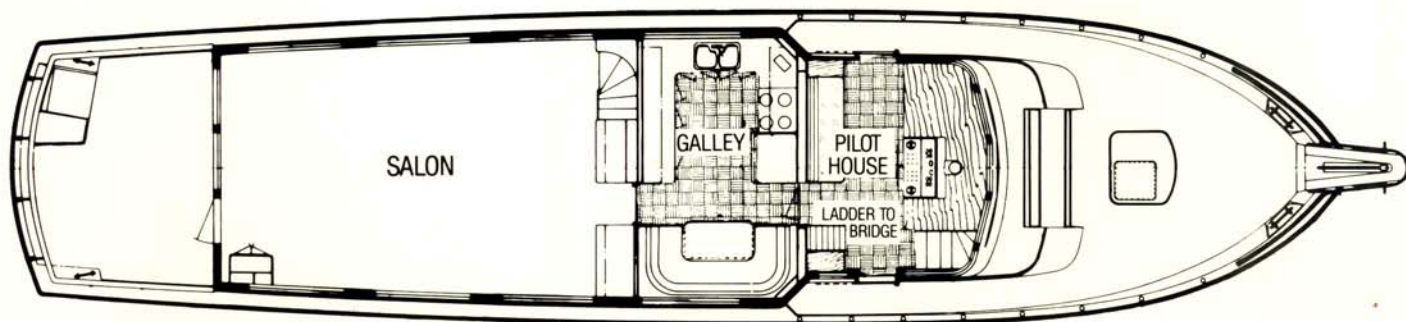
Length Overall	77'8"	23.56 m	Fuel Capacity	2,080 Gals.	7,875 ltr
Beam	18'7"	5.66 m	Weight Displacement	116,000 Lbs.	52,600 kg
Draft	5'0"	1.52 m	Height - Waterline to top of mast on arch	26'3" (est.)	8.00 m (est.)
Freeboard - Forward	9'5"	2.95 m	Height - Waterline to top of flying bridge windshield	19'7" (est.)	5.97 m (est.)
Freeboard - Aft	7'2"	2.18 m			
Headroom Most Areas	6'6"	1.98 m			
Fresh Water Capacity	495 Gals.	1,873 ltr			



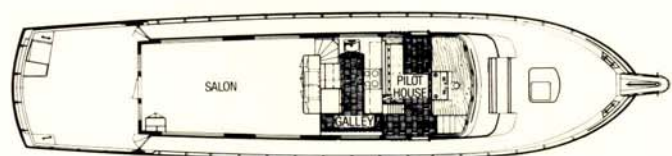
Walk-around Side Deck Arrangement



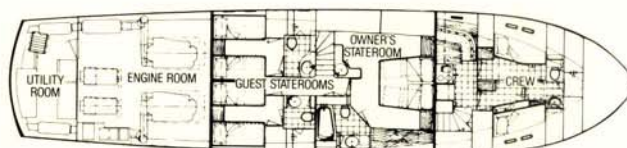
Full-beam Salon Arrangement



Full-beam Salon Arrangement



Walk-around Side Deck Arrangement



77 COCKPIT MOTOR YACHT

The 77 Cockpit Motor Yacht is available in either full-beam salon or walk-around side deck configurations. Features are identical to those of the 77 Motor Yacht, except that the utility room is replaced by a spacious cockpit that provides easy access to the water for dinghy handling, swimming or snorkeling.

For the avid angler, the seven foot cockpit with fish door allows more than adequate space for fishing chairs,

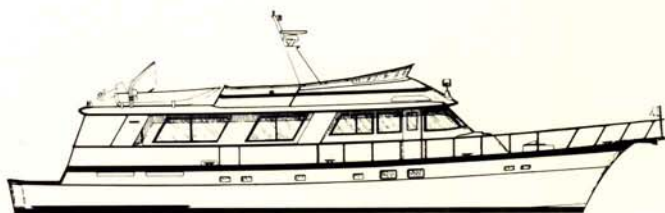
and can be outfitted with tackle cabinets and freezer.

As with the 72 and 77 Motor Yachts, the below decks accommodations areas provide sufficient flexibility to meet most owners' needs.

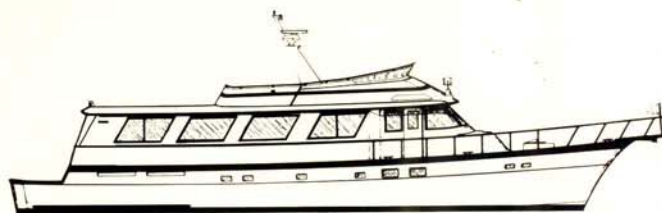
The aft engine room houses twin G.M. 12V-71TI or 12V-92TI diesels. Dual 20KW generators and other necessary equipment complete the carefully engineered engine room layout.

77 COCKPIT MOTOR YACHT SPECIFICATIONS

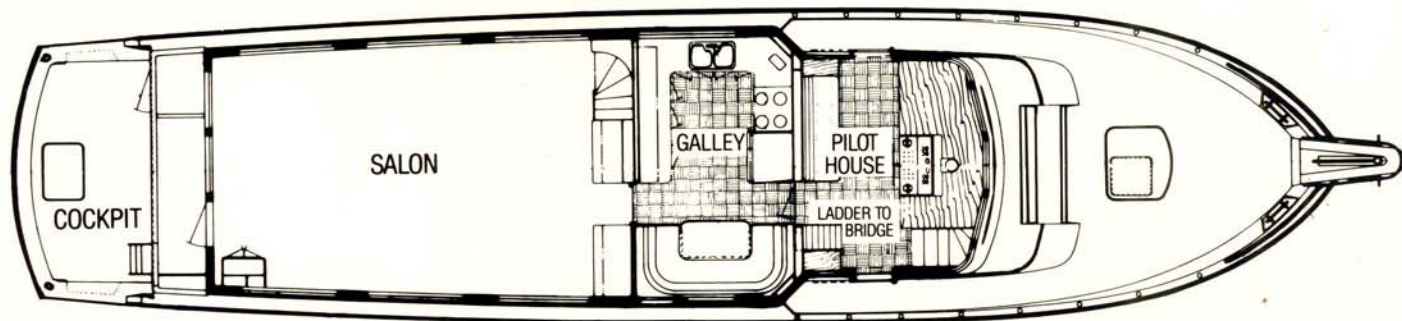
Length Overall	77'8"	23.56 m	Fuel Capacity	2,080 Gals.	7,875 ltr
Beam	18'7"	5.66 m	Weight Displacement	116,000 Lbs.	52,600 kg
Draft	5'0"	1.52 m	Height - Waterline to top of mast on arch	26'3" (est.)	8.00 m (est.)
Freeboard - Forward	9'5"	2.95 m	Height - Waterline to top of flying bridge windshield .	19'7" (est.)	5.97 m (est.)
Freeboard - Aft	7'2"	2.18 m			
Headroom Most Areas	6'6"	1.98 m			
Fresh Water Capacity	495 Gals.	1,873 ltr			



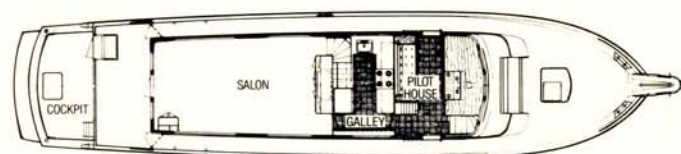
Walk-around Side Deck Arrangement



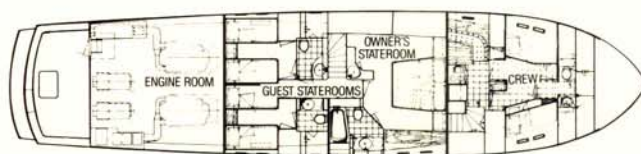
Full-beam Salon Arrangement



Full-beam Salon Arrangement



Walk-around Side Deck Arrangement



THE HATTERAS QUEST FOR EXCELLENCE

The built-in excellence of every Custom Yacht by Hatteras is achieved by a blend of artistry, experience, innovation and leading-edge technology.

The use of computer models to supplement human knowledge at critical stages of the design process has already become an integral part of the Hatteras tradition. As assembly of a new Hatteras prototype advances, our experienced engineers and technicians prove design theory through an exhaustive series of tests that encompasses every aspect of operating systems, from propeller pitch and balance to maximized electrical loading. And once the yacht is in the water, a unique Hatteras-developed systems monitor keeps watch over a wide range of critical functions.

Such meticulous attention to design perfection, combined with our commitment to use of quality materials, dedication to craftsmanship and a caring attitude, is the basis of Hatteras' reputation for building the best motor yachts in the world. Our yachts are the realization of a philosophy that was instituted in 1959, when, as we began work on our first yacht, Hatteras launched a single-minded quest for excellence. That quest has led to the accumulation of experience, knowledge and technology that goes into every one of our Custom Yachts, so that today, when you think of excellence, you are thinking of Hatteras.

"There is an element of artistry in developing a yacht with aesthetically pleasing lines. But the real test comes when you reduce those lines to reality – to a vessel that is going to sea to do what the owner bought her to do. Then it is not art that counts; it is the hull design, the engineering, the manufacturing care and excellence that determine whether the yacht will take the punishment and perform the way she is designed to perform."

Jack Hargrave, *Naval Architect*



HATTERAS

AMF Hatteras Yachts
High Point, NC 27261 USA

